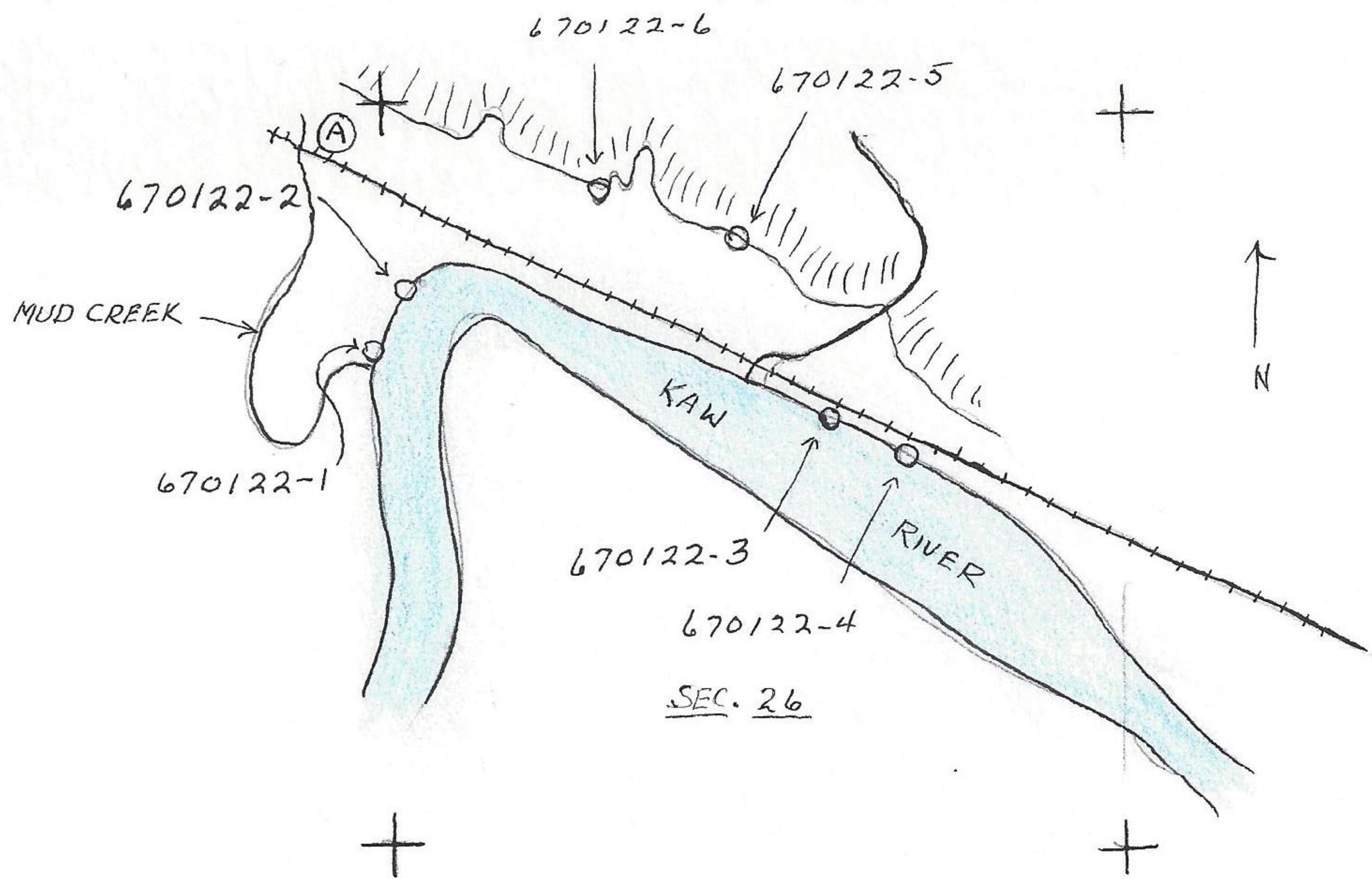


These broad wind swept fields are inhabited by horned larks and seldom, except meadowlark, by any other kind except predators. Could see 8 large ducks (mallards?) flying down the Kaw River to E.



Left car at point A

and continued SE along the river. The Kaw is entirely free of ice except on N exposures in some isolated positions. No ice moving in water. Partially sunken boats still retain ice although water surrounding them is open. Water clear to at least approx. 3 feet and slightly greenish. I had noticed that although the Kaw is open below the dam at Lawrence, the river ^{above} the dam is ^{frozen} open. Recorded the following photographs (see map):

- 670122-1 from N side of the mouth of Mud Creek looking S down across the mouth of creek. Kaw in background. Beaver have insistently used the area to right of river (mouth Mud Creek)
- 670122-2 from near bend of river and showing Kaw River to S. Rocks in foreground part of barrier and not native. Extensive sand bar in river. (1/10 mi. NNE of mouth of Mud Creek).
- 670122-3 log at edge of river showing Kaw upstream (6/10 mi. SW of NE corner sec. 26, R 20E, T. 12S).
- 670122-4 (3/10 mi W and 1/2 mi. S of NE corner Sec 26, R 20E, T 12S) showing large cottonwood trees in foreground and Kaw in background. These trees were isolated by some distance from other cottonwoods of similar size along river.
- 670122-5 of old elm tree with locust in foreground. This is in an area of cliffs, some 10' high, created by overflow of Kaw. One supported good fungus and spring seepage. No petroglyphs observed but one area may have supported overhead protection. (1/2 mi. E + 2/10 mi. S NW corner sec. 26, R 20E, T 12S).
- 670122-6 Cattails in marsh at mouth canyon. Artificially created by drainage barrier. Frog calling weakly. (2 mi. E and 1 1/2 mi. S NW corner Sec 26, R 20E, T 12S). Coyote + fox tracks associated as was one muskrat channel. In this area noted 2 meadowlarks to alight in tops of tree.
- 670122-7 maupin estate, 1613 Tenn. Lawrence, Kansas