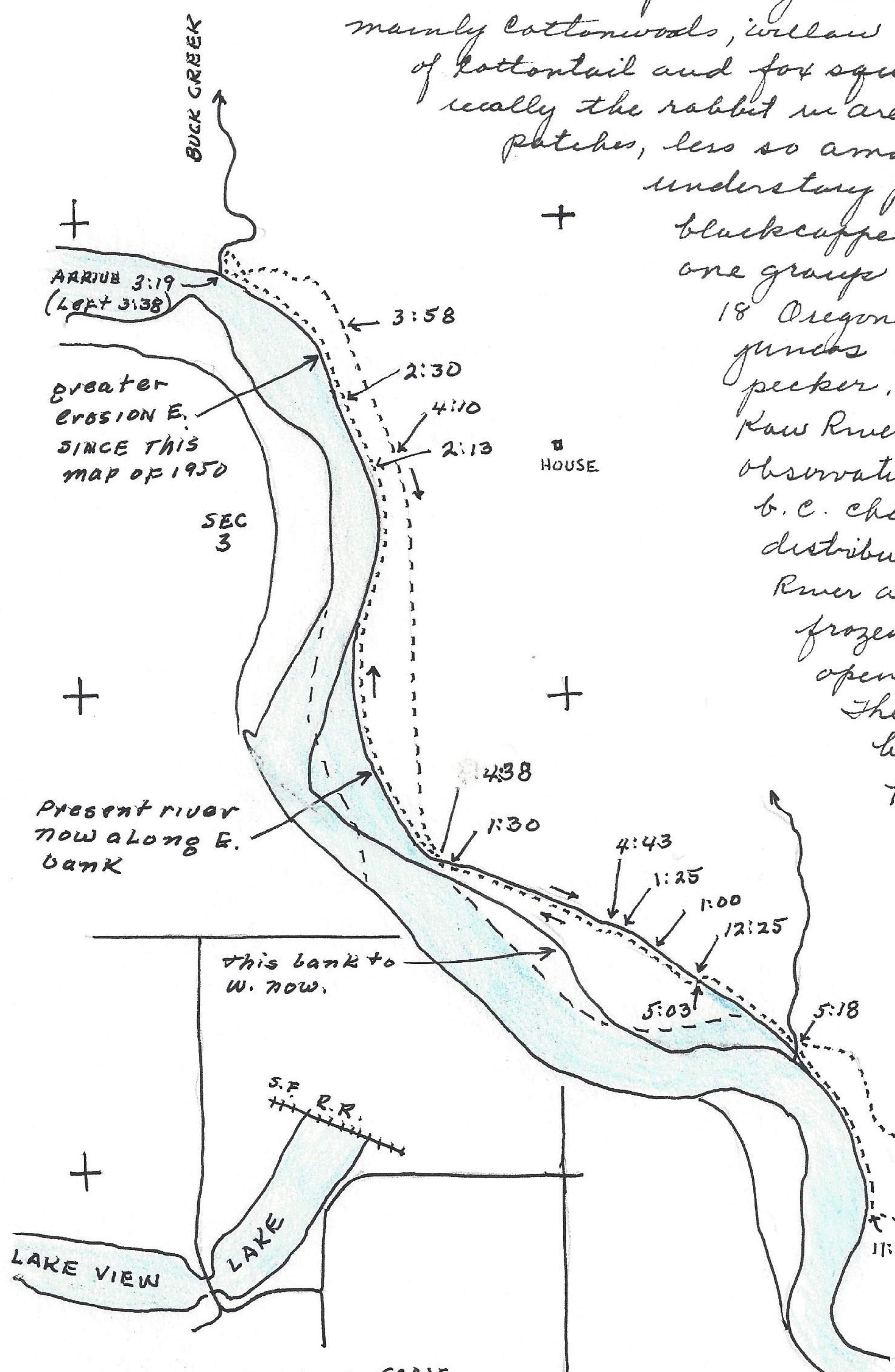


Kaw River, Douglas-Jefferson Co., Kansas

Jan 29, 1967

Made trip on foot along E side of the Kaw River in the vicinity of Lake View (see map below). Day overcast, slight breeze in A.M. and first part of forenoon but dead still in later afternoon. Temp at start 45°F. Left car at 11:15 A.M. 38 meadowlarks flew from open field and alighted in top of tall cottonwood tree. Will keep complete record of birds and mammals observed, and correlated with time. 11:26 4 slate colored juncos feeding on short grass of dike. They flew into trees 50' away. Snow covers practically all of the ground but only an inch or so except in drifted places.

Route leads into riparian growth of large trees, mainly cottonwoods, willow and elm. Tracks of cottontail and fox squirrel common, esp. really the rabbit in areas of open field weed patches, less so among trees with poor understory plants. 11:30 8 blackcapped Chickadees in one group associated with 18 Oregon & slate-colored juncos and 1 downy woodpecker. 11:40 arrived at Kaw River. Since last observation have noted 15 b.c. chickadees generally distributed in singles or 2 or 3. River at this point is 80° frozen with intermittent open water in center. The water is influenced by the dam at Lawrence. Temp. 31°F. Only a few fragments of ice are moving and accompanied by an audible sound as ice contacted the solid river ice.



I would estimate 50 cottontail trails between car and river. 2 blue jays in area.

K.P.L. □