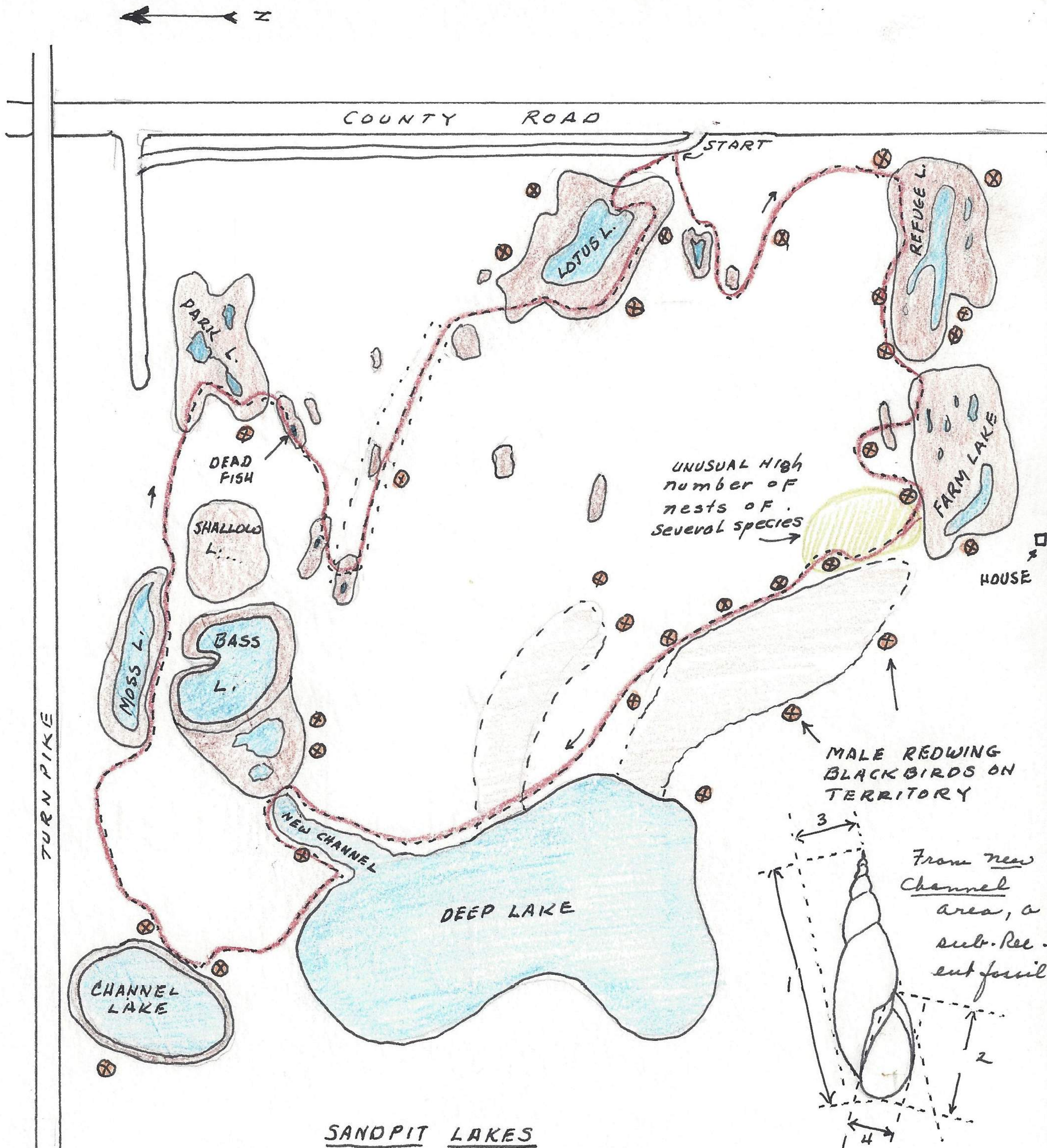


28  
Bee



SANDPIT LAKES

1 2/10 mi N and 1 1/2 mi. E Lawrence (old P.O),  
Douglas Co., Kansas.  
march 19, 1967

Survey of Sandpit Lakes at 9:00 A.M., temp 34°F, cold wind and occasional rain. On arrival a flock of 66 blue geese and 34 snow geese flew NW at about 1000 feet. The snows were in groups of 1 to 6 among the blues. One group of 6 a separate associated group. V shape formation. a sparrow