

1620 Tennessee, Lawrence, Douglas Co., Kansas

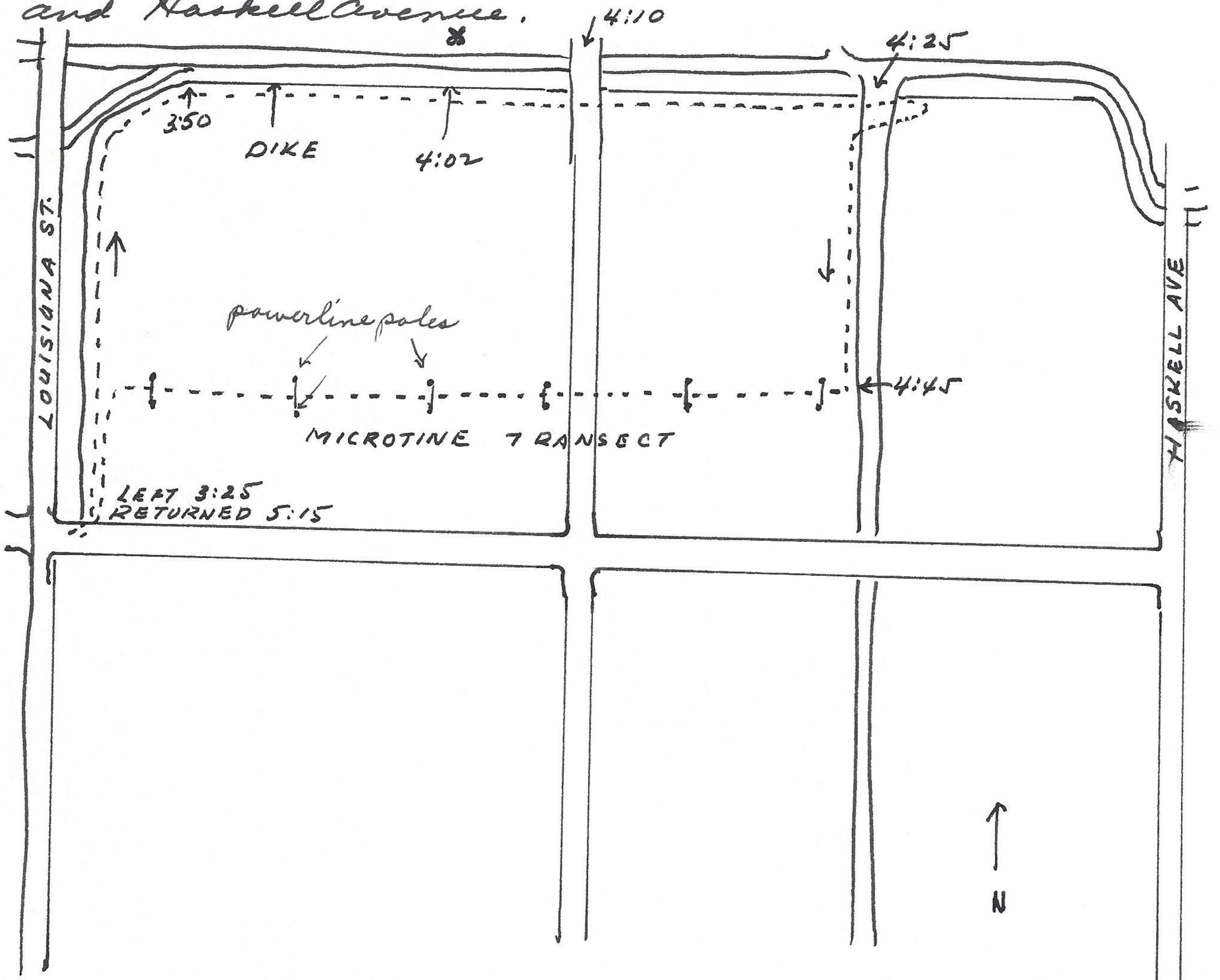
April 3, 1967

At 6:45 P.M., grackles started to fly E over house and by 6:50 approx. 400 had passed by. In this same period of time and in the same flight lane, but <sup>flying</sup> to the W, approx 300 flew by. There is considerable grackle activity in understorey of trees in area. The first grackles to select nesting trees on the main place across the street did so on March 25. One mockingbird noted at Watkins Hospital on Univ. Kansas Campus.

Haskell Bottoms, Lawrence, Douglas Co., Kansas

April 4, 1967

Surveyed Haskell Bottoms between Louisiana Street and Haskell Avenue.



Left car 3:35 P.M., cool, 10% sky in clouds. meadowlark at car. Followed marsh at base of dike. Cricket frogs calling. 3:36 2 song sparrows together; feathers ruffled on head and body movements jerky. 3:37 song sparrow and reacted as other two. Warming needles active. 3:41