

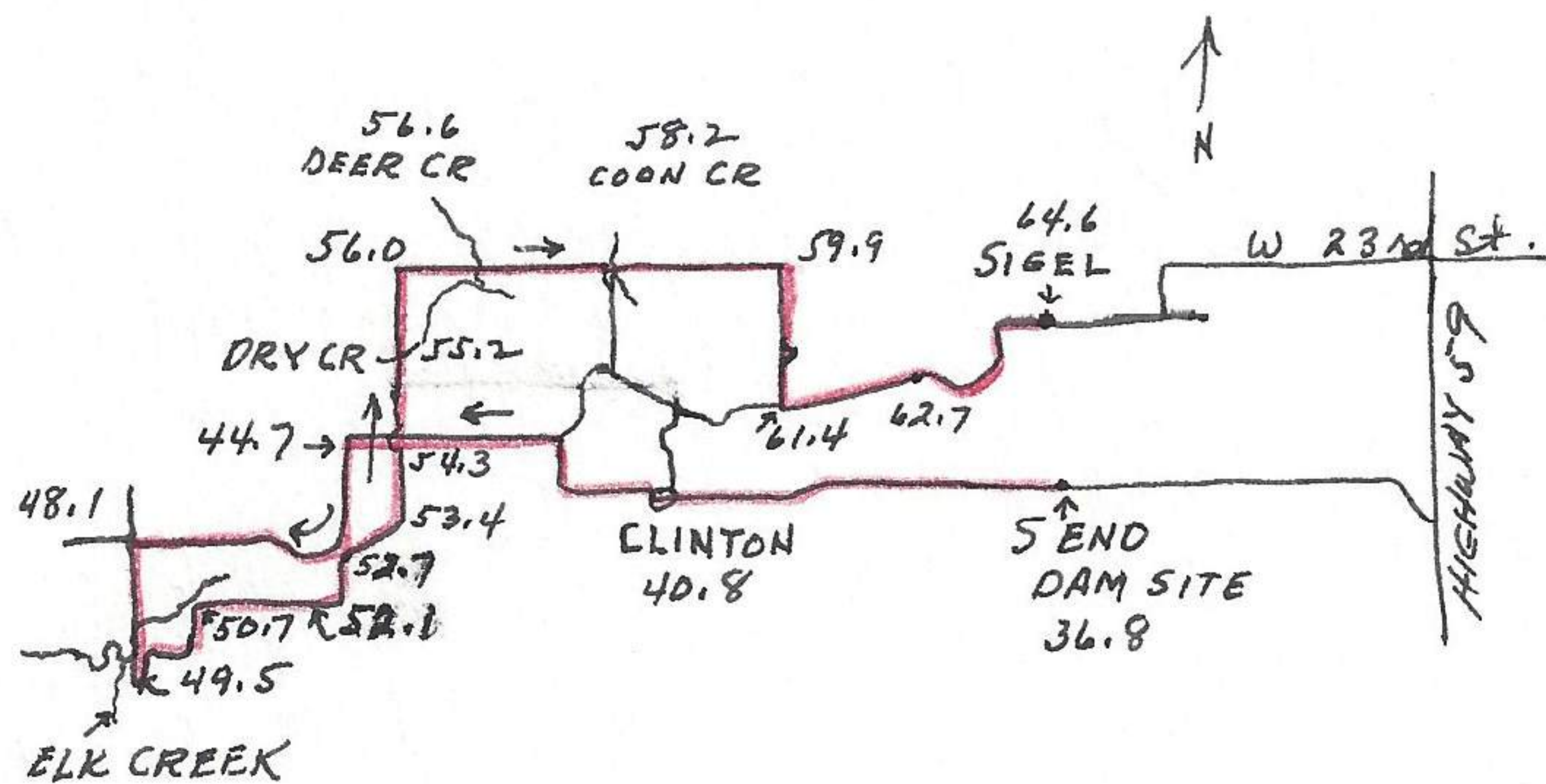
There ~~are~~ more log jams and debris in river this year than I remember in previous years. It may be that first spring floods will clear the channel. The wind has been strong and steady and more noticeable in channel than I ~~can~~ remember. One employs more energy and constant attention to canoe (solo) than on the Kaw River, especially with the strong and variable wind of today. Loaded canoe on car. This is a good arrangement to place car at destination before starting canoe trip. Left at 2:12 at mileage 51.2, 51.7 to N. 52.1 mow at river, 52.6 3 pairs horned lark, one dropped down to road, ^{to another lark} in almost perpendicular angle as if it may have been in courtship behavior in air. 53.0 horned lark. 53.1 2 horned larks. 53.2 horned lark. 53.4 horned lark. 53.6 bridge over Wakarusa. 54.2 4 corners & now to E. meadowlark. 54.8 meadowlark & now to N. marsh hawk high in sky. 55.3 meadowlark. 55.6 2 meadowlark. 55.8 now E on main road. meadowlark. 56.6 Belvoir bridge. 57.4 now north thru forest. 58.0 large tree blown across road & so return to main road. 3 crows, titmouse, 2 chickadees. 58.5 back to main road, cardinal. 60.2 Clinton. 60.6 2 cowbirds. 62.0 6 starling. 63.6 grackle. 64.2 S end proposed Clinton Reservoir dam. End of complete census.

Mouth Elk Creek, Wakarusa River, Douglas Co., Kansas

April 14, 1968

with Mary

Returned to near mouth of Elk Creek, to photograph case of river stream piracy. Day cool, 40% clouds in sky. Strong wind from NW. Mileage at S end proposed Clinton Reservoir dam 36.8. 37.4 meadowlark, 38.6 meadowlark, 39.2 meadowlark.



40.1 turkey vulture navigating with difficulty, starling. 40.8 Clinton. Eng sparrows and 3 grackles in town. 41.3 meadowlark. 41.5 meadowlark. 42.1 6 grackles. 42.3 2 Cardinals. 42.8 E bluebird. 43.3 Belvoir bridge. 43.9 meadowlark, 44.0 Cardinal. 44.3 shrike and meadowlark. 44.7 now to S.

45.2 song sparrow. 45.4 cardinal. 45.5 passing by Harry Kennedy place. 45.8 2 mourning doves, blue wing in pond, cardinal. 45.9 now to W. 46.0 meadowlark. 46.6 drainage from lake to right. 46.9 2 bluejay. 47.2 top hill. 47.4 turkey vulture. 48.1 four corners on sidehill & now to S. shrike here. Shrikes are usually noted at this corner or not far from it. 48.3 Cardinal. 48.4 cardinal. 48.9 bluebird. 49.2 bridge over Wakarusa.