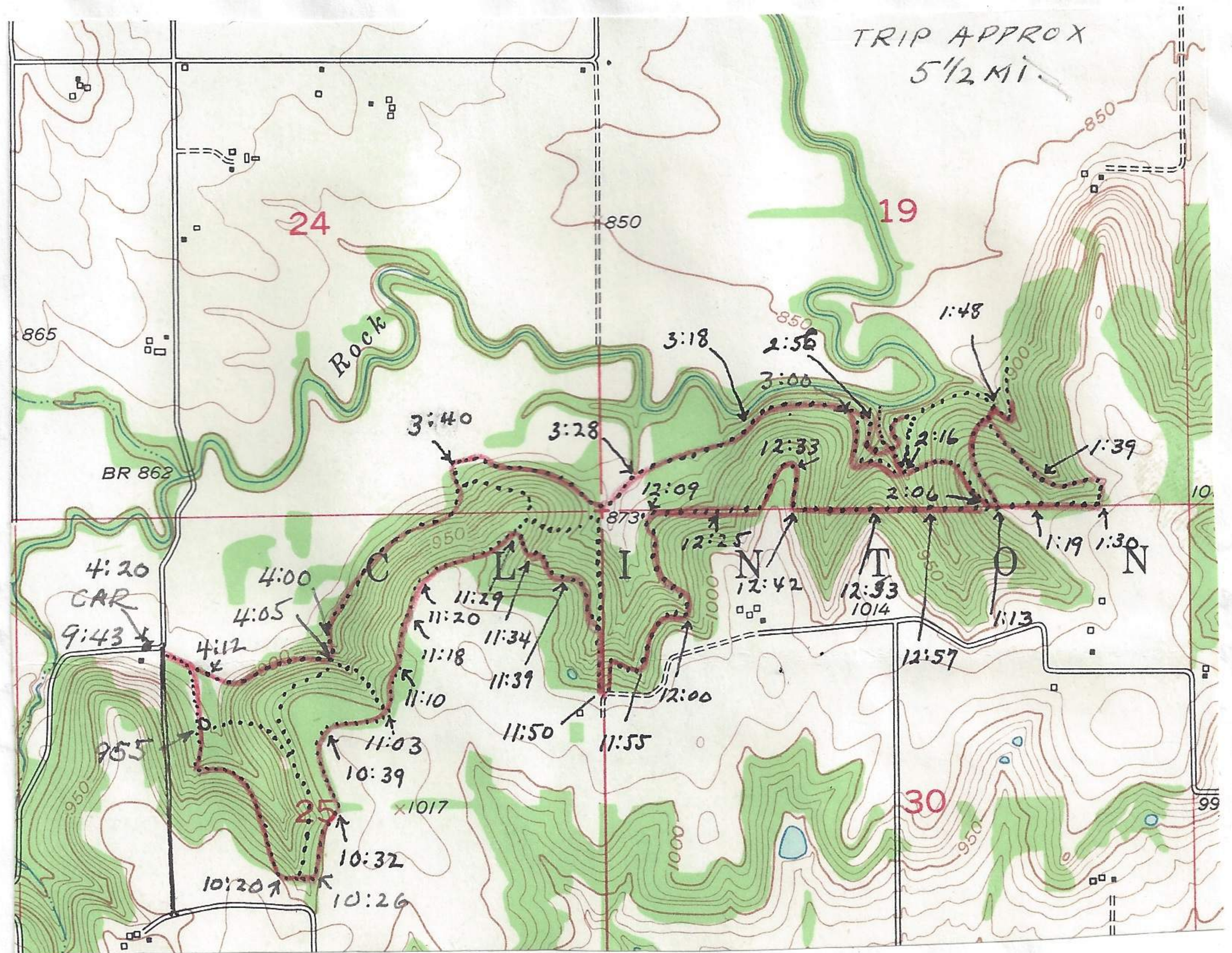


Rock Creek, SE Clinton, Douglas Co., Kansas

May 26, 1968.

Made census of deciduous forest S. of Collins farm and SE of Clinton. This hillside forest is associated with Rock Creek. Left Lawrence 9:15 A.M. Cloudy sky, 100%, with dark lines



of clouds in eschelon formation, wind 8-10 M.P.H., temp 55°F, wind from NW. Different kinds of birds observed to S end proposed Clinton Reservoir dam are: Eng sparrow, grackle, robin (Wakarusa same height as last evening), dickcissel, redwing blackbird, meadowlark, eastern kingbird, mourning dove, red headed woodpecker, barn-swallow. Mileage S end dam 35.8 36.0 meadowlark, redwing, dickcissel, 36.2 dickcissel, redwing, redwing, redwing, all males. 36.5 redwing. About 150 swallows above farm house trees and sp. ?. 37.2 Rock Creek, water lower than yesterday evening. dickcissel. 37.5 2 barn swallows. 37.6 horned lark, dickcissel. 37.9 dickcissel. 38.1 mourning dove, grackle, chimney swift. 38.3 now to S. meadowlark. 38.5 bluebird (all bluebirds are eastern), 2 redwings, dickcissel. 38.7 savanna sparrow, redwing, meadowlark. 39.1 grackle. 39.4 bridge. Water at high level was at edge of upper level below valley level, now down 2/3. Goldfinch calling, cardinal, Indigo bunting. 39.5 Indigo bunting, 2 cowbirds. Wind bending upper parts of trees. 39.7 base of hill. Leaving car at 9:43 A.M. field sparrow and Indigo bunting at old area of old raised house. 9:44 entering forest. 2 crows calling. 9:45 2 cowbirds, 2 great crested flycatchers. Sceloporus under rock. 9:50 great crested