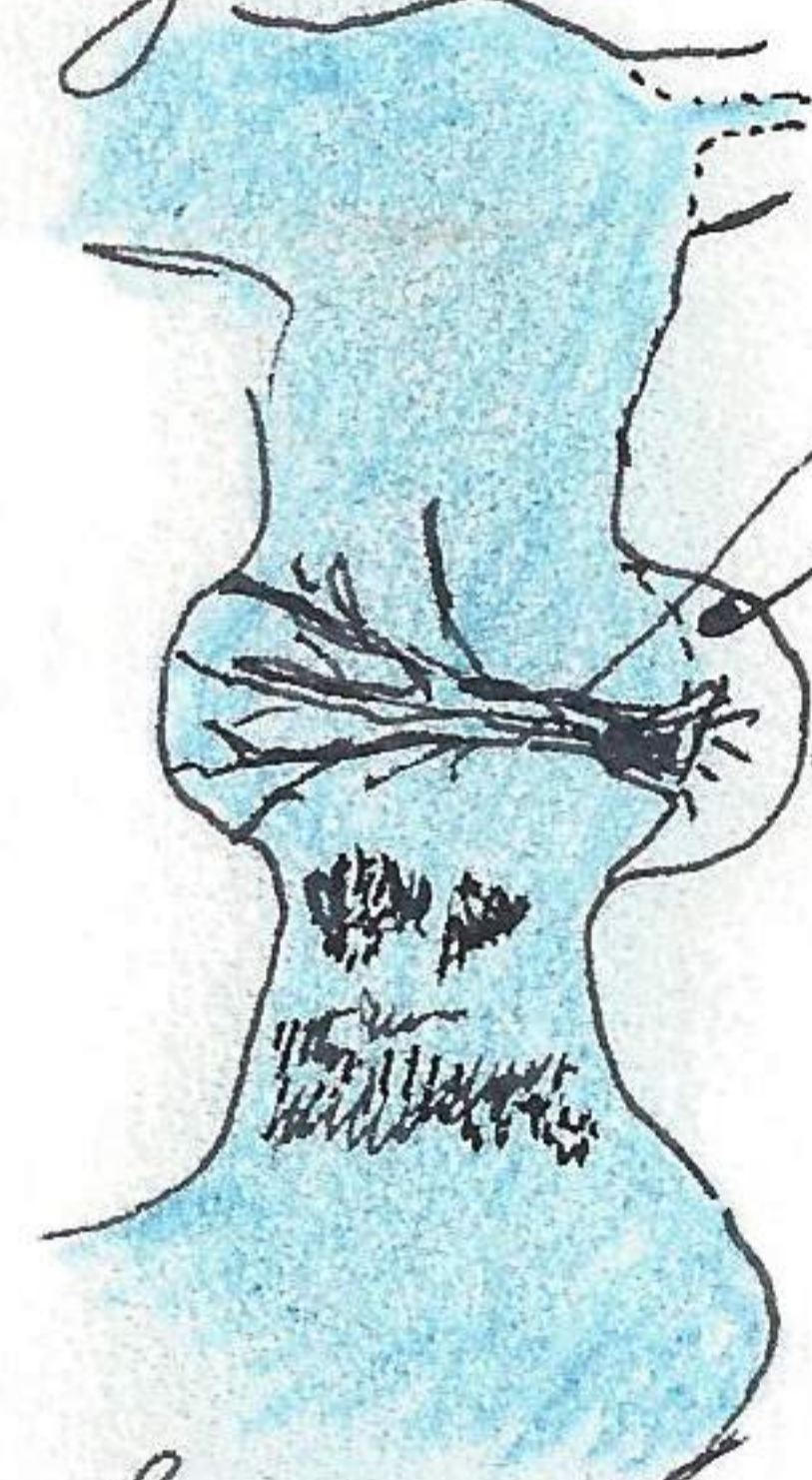


redtail & g. horned owl here. white breasted 680928-136
 both sides. 2:24 G. Blue heron colony. ^{nuthatch called from} 4 nests in large tree, 3 in
 smaller trees to E. 5 jays. Continued straight thru. 2:25
 flicker & 4 redhead woodpeckers. 2:38 East bend, now to W.
 Raccoon tracks all along way, some g. b. heron tracks & some beaver
 barbed limbs in water. Both black & red damselflies all
 along way 2:43 2 redbellied, ^(first heard today) 2 crows, 4 bluejays. Frogs about 1
 per 100 sq ft. 2:46 ♂ & ♀ wood duck left & called. 2:50 W end
 curved or bend. 2 redbellied woodpecker. Considerable degging of
 bank by raccoon. Bullfrog 5 inch in body length 2:53 major

drainage left & water flowing. Pewee-like call. 2:55 log jam
 over at 2:59. G. Owl. 3:05 log jam, over 3:10. Log
 jam 3:14, over 3:16. 2 redbellied woodpecker 3:24 Log
 jam, over 3:30. 4 jays. 3:34 log jam 3:37 over
 3:38 log jam new trees as if tornado. over 3:42 2
 redbellied, Chukadees 3:45 major drainage left. 3:48
 bend to left, high bank, drainage on right. 2 woodpecks
 and could be same as first ones observed. 3:58 6 woodpecks,
 4:00 percy channel. North wall about same. Log
 jam about same. S wall of channel has change some.



← N.
 old tree that had been on S side
 hachberry old stump 6' high & 28" diameter.
 water level below falls 32 inches below
 - water of smooth water above, no fish.
 mud now eroded but about same. 2 red-
 bellied woodpeckers. Barrier of old channel 3 ft high
 Left 4:30. flicker. 4:35 2 consecutive log jams, thru
 4:55. 2 redbellied, hairy, Chukadees 4:57 major drainage
 right. redbellied. 5:04 2 log jams. Elk Creek 5:07
 Bridge 5:12 having crossed another log jam. Left

5:50. well follow river road. mileage 37.4 redheaded
 woodpecker. 38.0 now N at bend, light redtail. 38.1 NP.
 bank, 38.4 bend at river. 8 crows. 38.6 now E. redtail
 39.0 cement bridge, shrike. 39.5 horned lark. 39.8 Wahanna
 bridge. 4 jays 40.1 3 horned larks 40.4 4 corners now to E
 41.0 now to N. dark redtail. 41.4 redtail, 2 mdoves.
 41.6 6 m doves, m. lark. 41.9 now road but cont. N.
 42.8 Dry Creek, ^{aluminum in field} 42.9 shrike #3, 1 redtail. 43.6 now E. 6 blue-
 birds. m. dove. 44.5 Deer Creek, 2 mdoves here