

3:25 Collected a shoveller from N side of river. It measured: total length 500 mm, exposed culmen 66 mm, wing 240, tarsus 47, tail 81, wing spread 792, weight 1 1/2 lbs. This bird had a dark mottled grayish brown neck & head. 4:00 mouth Stranger Creek.

4:10 bridge. Wind strong and difficult to move up creek. The day has been one of progressively more clouds, deep blue sky & steady wind. The electric motor was used continuously (slow speed) for 5 1/2 hrs. At about 4 hours the power shows signs of weakening and at 5 1/2 hrs the propeller moves only slowly. 12 volt battery used.

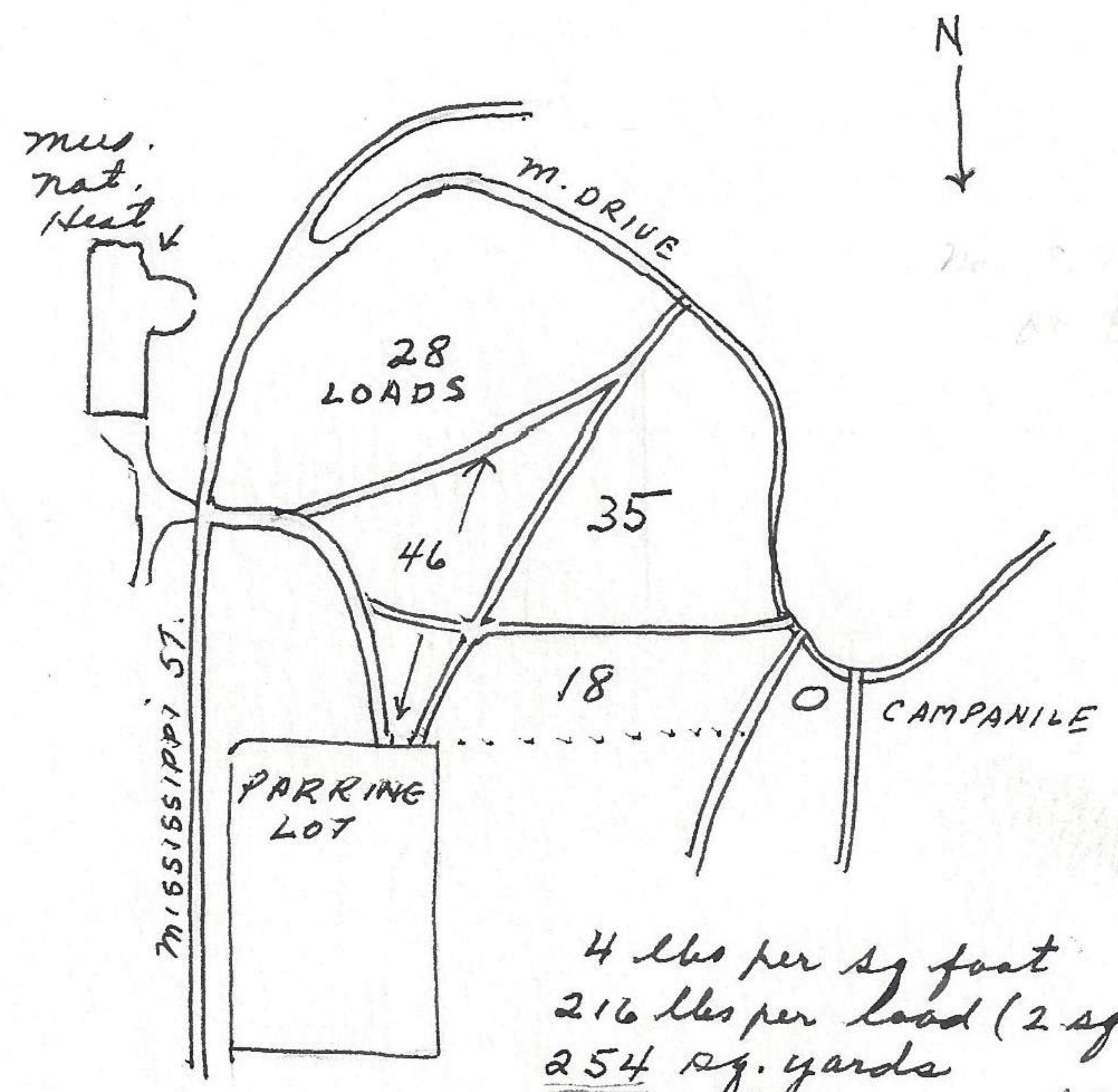
University of Kansas, Lawrence, Douglas Co., Kansas
Nov. 19, 1968

approx 80
The robins have been on campus for the last month. They are most frequently noted in area S of Hock Auditorium among the Ponderosa pines. The solid and dried crab apples are used as food, especially the raisinlike dried ones that are sweet in taste. Other ornamental shrubs and their berries also contribute to the lingering of robin on the campus.

University of Kansas, Douglas Co., Kansas
Nov 22, 1968

(Marvin Grove)

On the basis of leave-raking operation of an area of known dimensions it is possible to derive an approximate figure of the leaf biomass. This area is the drainage between Mississippi St and the Campanile and the Memorial Drive and parking lot. Leaves were collected by a special leave collector in which a brush sweeps up the leaves into a box, both drawn by a tractor. The leaves, 75% (mainly green) and grass, 25% (both approximate figures) of one load was approx. 2 sq yards. All trees had shed leaves except approx 22 oaks still with leaves and yellow to golden brown in color. This area had not been raked of leaves this year.



4 lbs per sq foot
216 lbs per load (2 sq yards)
254 sq. yards
27,432 lbs or 13.7 tons gross and leaves.

On the basis of known area, weight of leaves, volume of leaves, size of trunk (diameter) it is possible to determine the biomass per unit area. This figure is as follows: (also see Nov 18, 1974 for comparison)