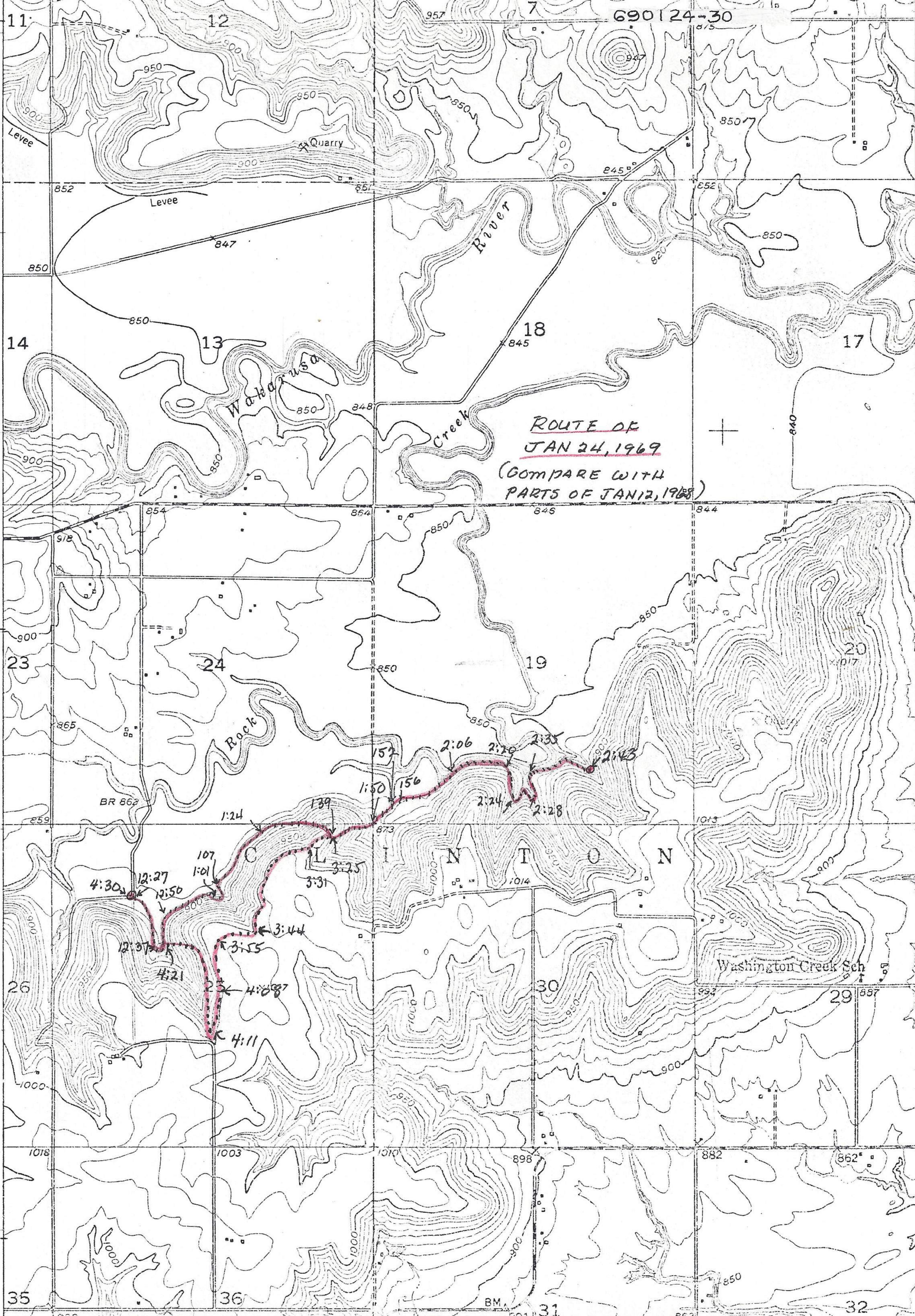


4312
4311
55'
4310
4309
4308
4307
210 000
FEET
35
36
31
32



ROUTE OF
JAN 24, 1969
 (COMPARE WITH
 PARTS OF JAN 12, 1968)

Handwritten time markers along the red route line:

- 4:30
- 12:27
- 12:37
- 12:50
- 1:01
- 1:24
- 1:39
- 1:50
- 1:56
- 2:06
- 2:16
- 2:24
- 2:28
- 2:35
- 2:43
- 3:11
- 3:25
- 3:31
- 3:44
- 3:55
- 4:08
- 4:11
- 4:21