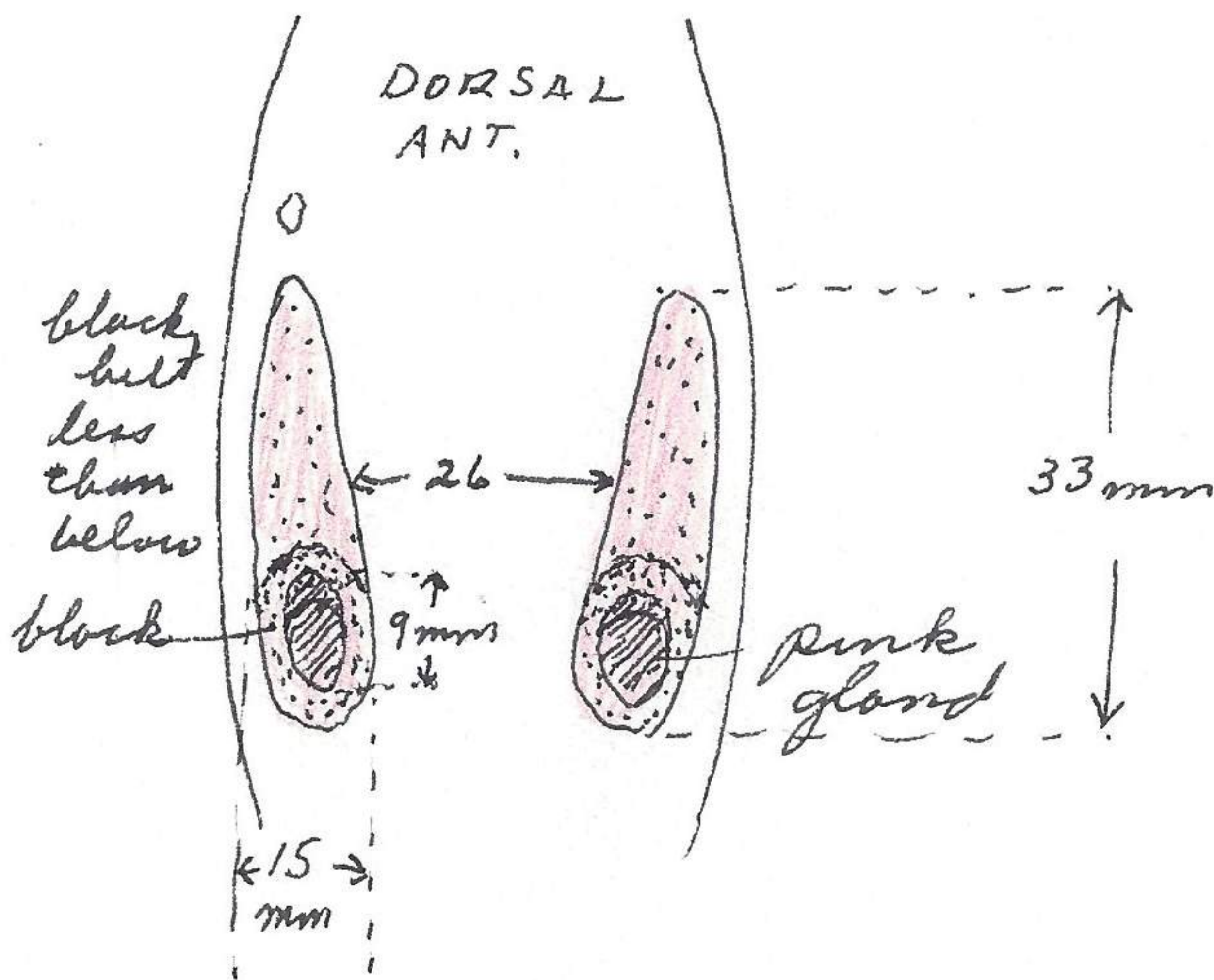
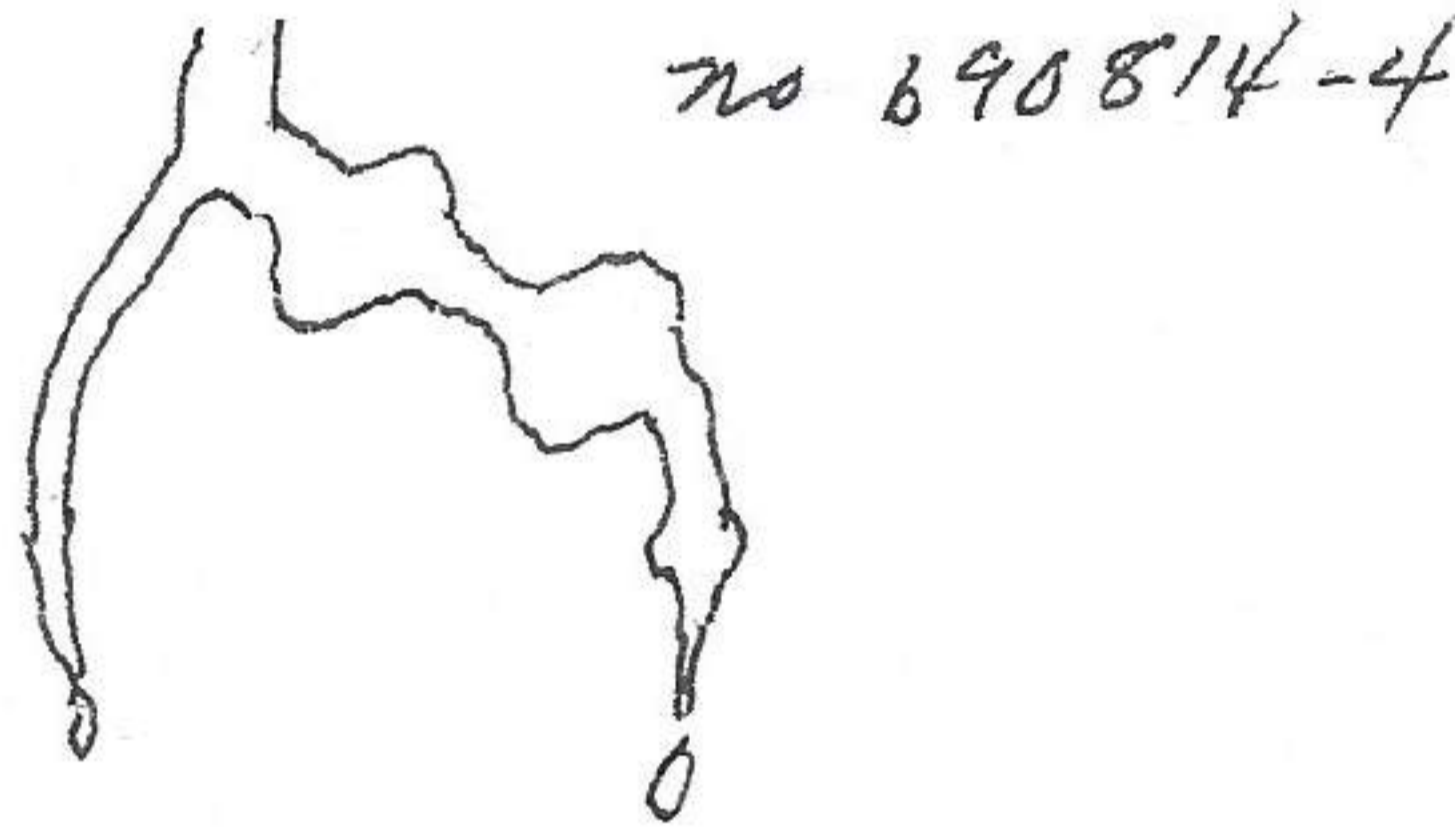


Butterfly Lake, 10300 ft., Duchesne Co., Utah

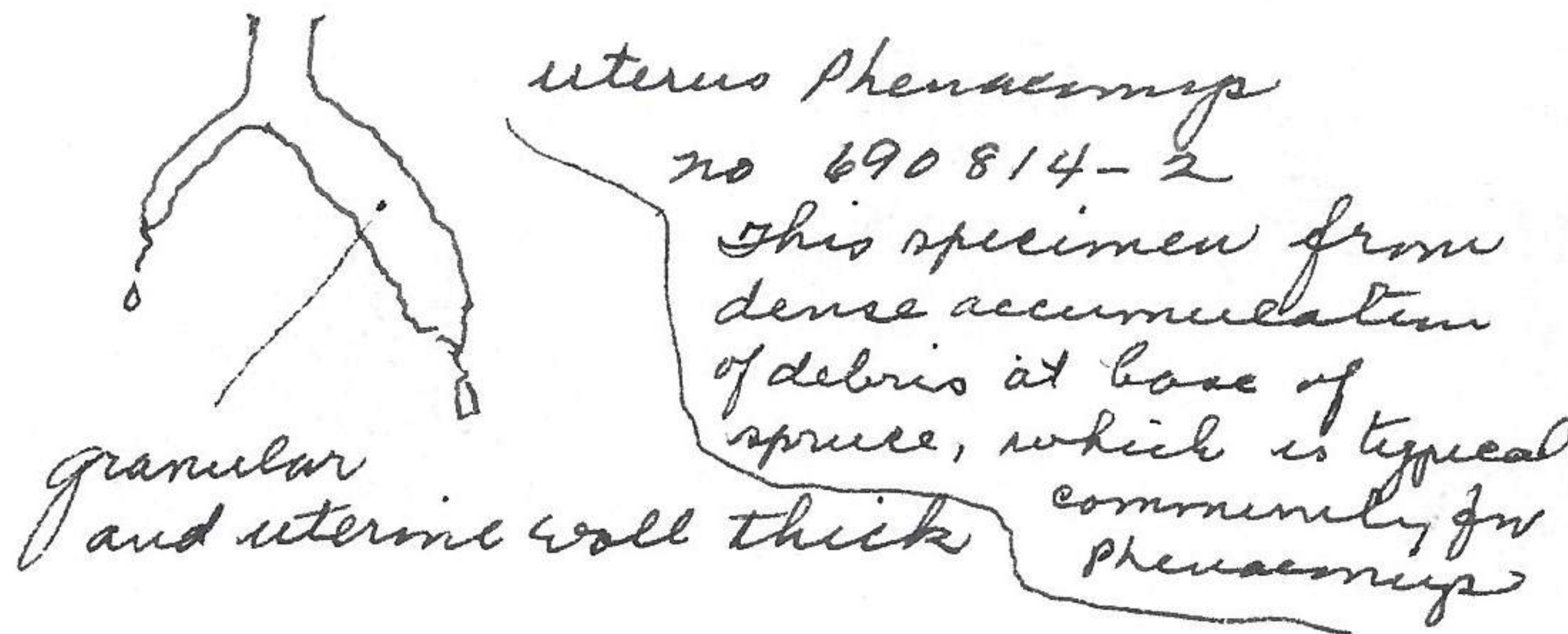
Aug. 14, 1969

From 70 traps set ^{last night} along edge of outlet creek of Butterfly Lake, collected the following mammals. This creek runs at a steep angle and is bordered by typical creeklike vegetation. Only occasionally, however, is there favorable places for microtines. The water is approx 1/4 the amount of this time last year. ^{Temp at 7:50 AM 50°F} Trapline ended at flatter section of drainage.

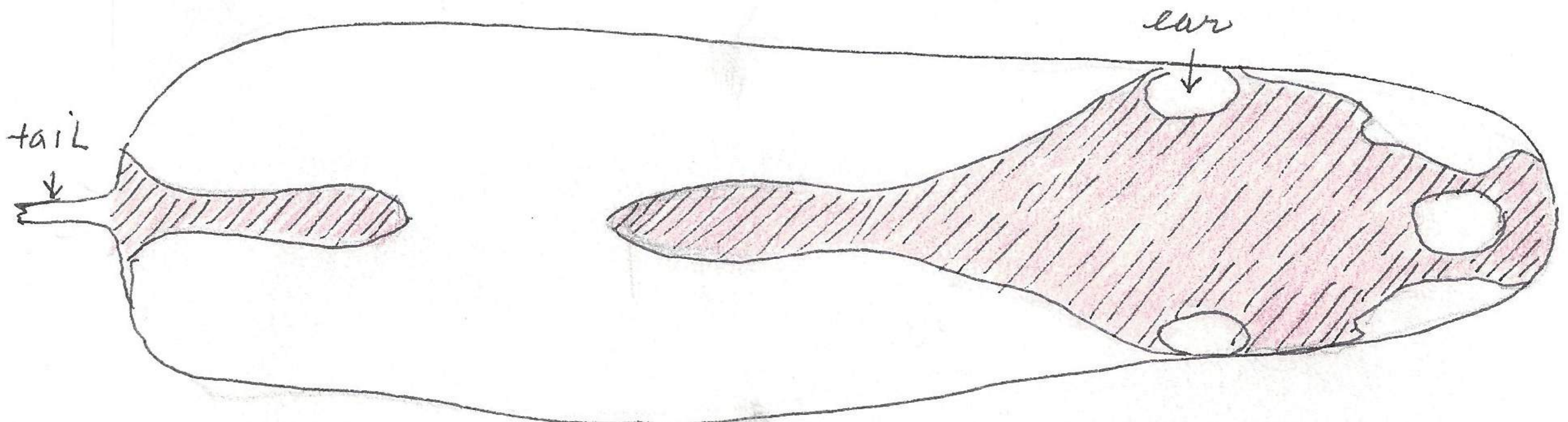
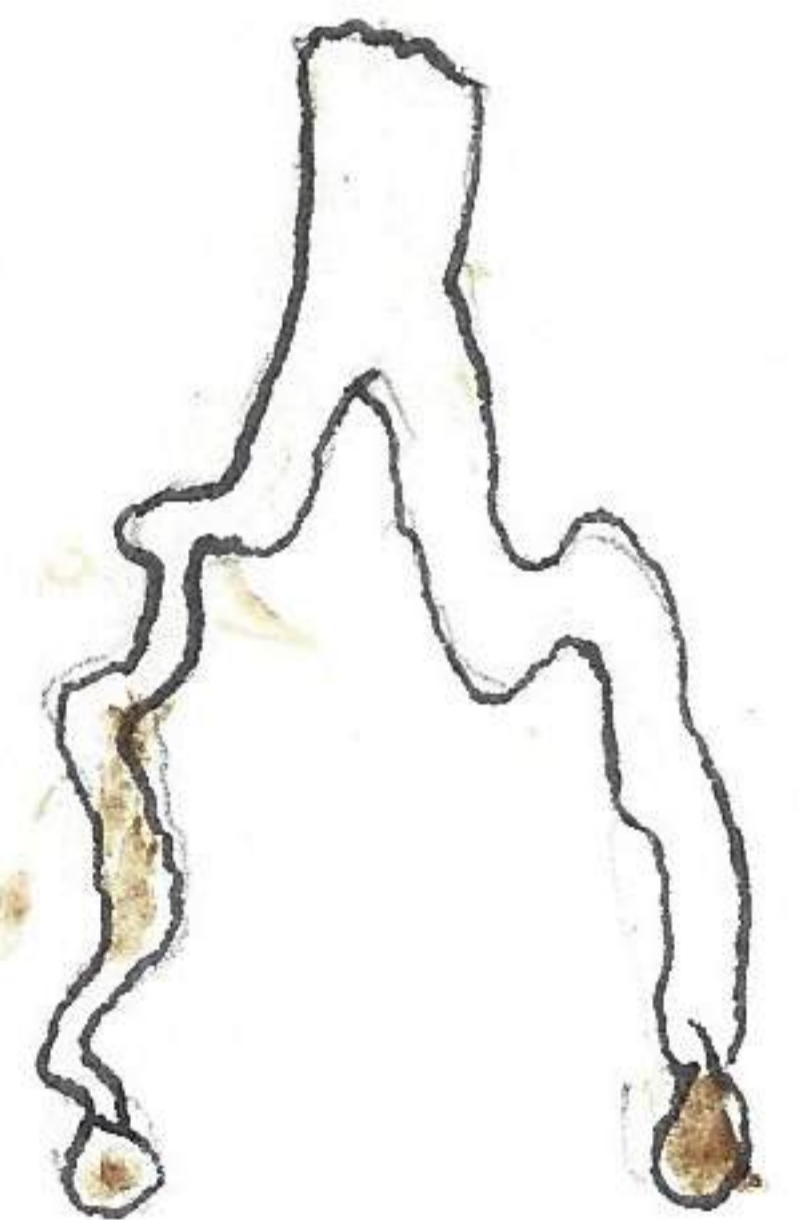
- 690814-1 *Sorex* 107-43-13-8-4.5 mm ♀ ut normal
- 690814-2 *Peromyscus* 149-36-18-15-39 gms ♀ suckling
- 690814-3 *Microtus* 195-58-26-15-66 gms ♂ testis 14 mm
- 690814-4 *Microtus* 180-56-25-14-47 gms ♀ 2x0 emb 8 mm (one 2 mm absorbed on right.)
- 690814-5 *Microtus* 180-60-26-14-44 gms ♀ vagina open
- 690814-6 *Clethrionomys* 139-37-18-14-29 gms ♀ 3x2 emb 18 mm
- 690814-3 ? *Neofiber*



specimen number
690814-3
Microtus



no 690814-5
uteri kinked
left larger
no embryos
(nat. size)



specimen 690814-4 inside skin, black molt.