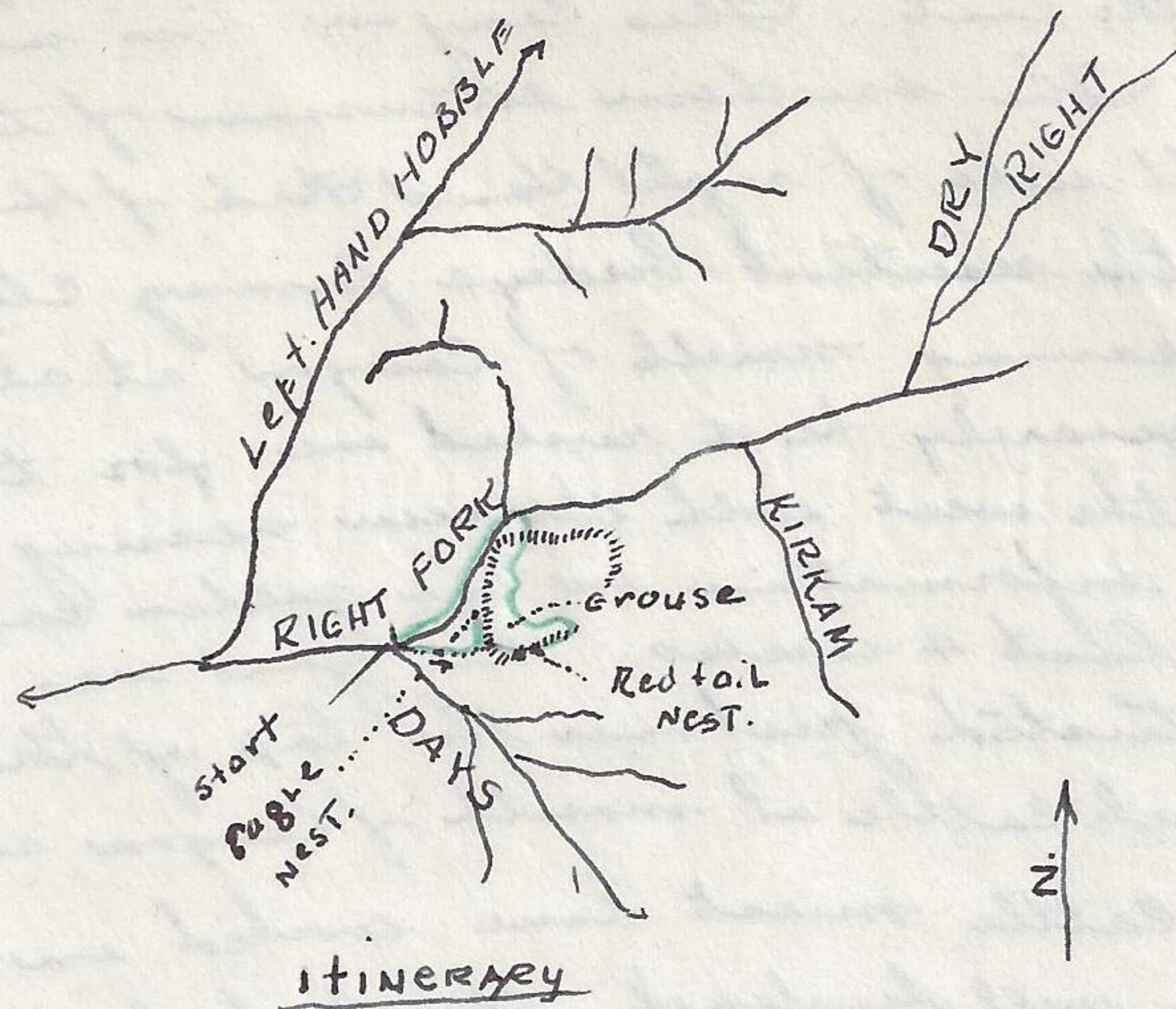




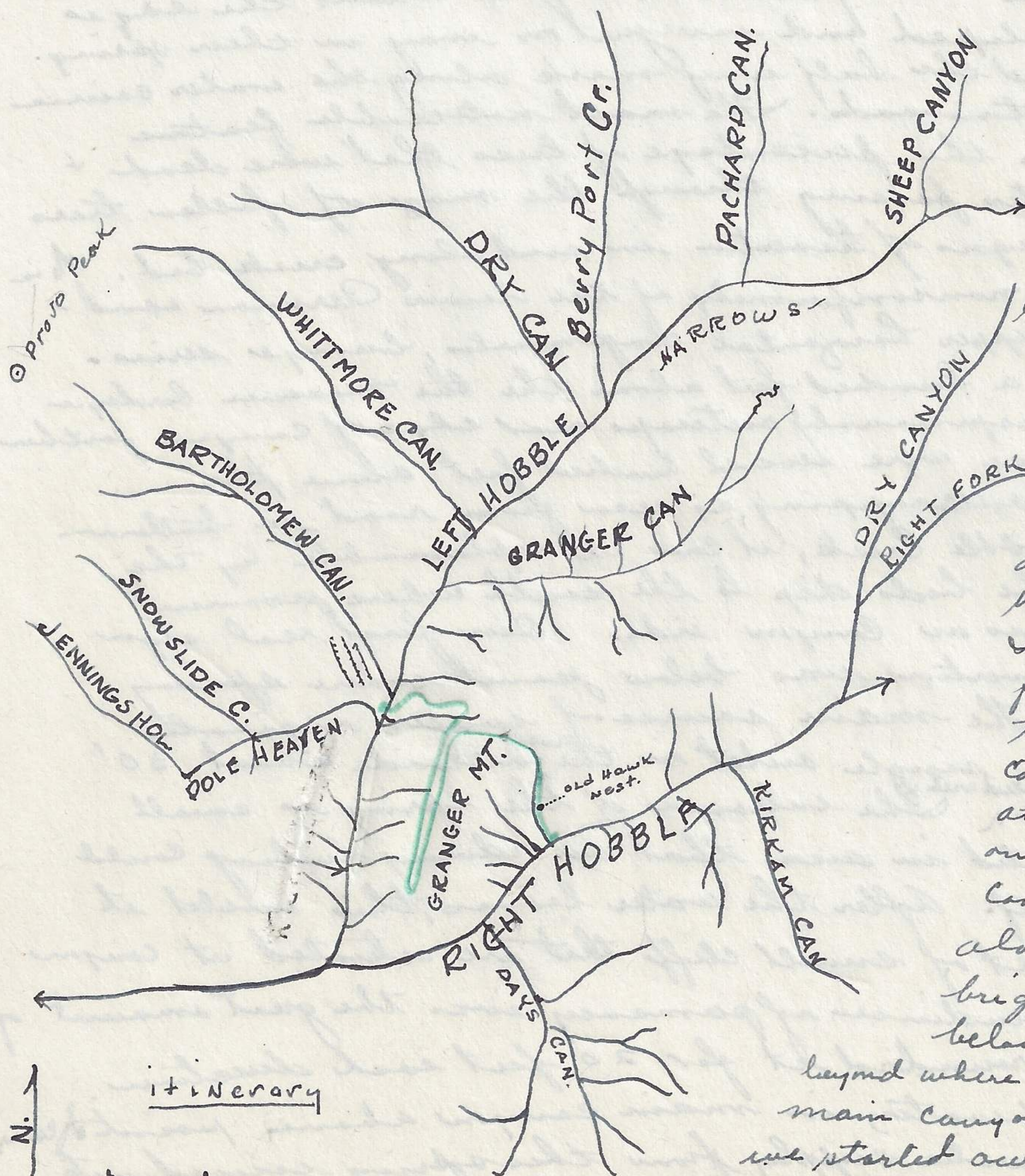
1-5-1-38



Looking directly west, down canyon from the eagle nest cliff showing the type of canyon that may have been made from glacial work

originating from higher peak in the left hand fork of Hobble Creek. During our work at the eagle nest, several squalls came up the main canyon only to be followed by more sunshine. This is a period when clouds began to raise after the general stormy period which included rains, snow & hail. 31 deer were seen on day trip. Did not see eagles at any time.

5/1/38 - Left car at canyon just to the left of the low and conspicuous butte marble cliffs on left side of Right hand fork of Hobble.



Proceeded up canyon supporting stream to head and then on ridge. Traveled its entire length to the south then back again to last prominent red & white cliff on west side of Granger mt. then down into left hand fork of Hobble at junction of Dole heaven, & Bartholomew Canyon where car had been driven around to pick us up. - Harry Chandler and I left mother & Dad at open field at mouth of canyon that lies just west the conspicuous & prominent cliffs at turn of ^(Hobble) canyon ^{where it} takes on a N.E. trend. These cliffs can be seen when driving along main road and have bright red stain on soil below them. When at point just beyond where Darg creek enters the main canyon can be seen the canyon we started our trip. It leads up the mountain side in a northerly direction.

It leads up the mountain side in a northerly direction.