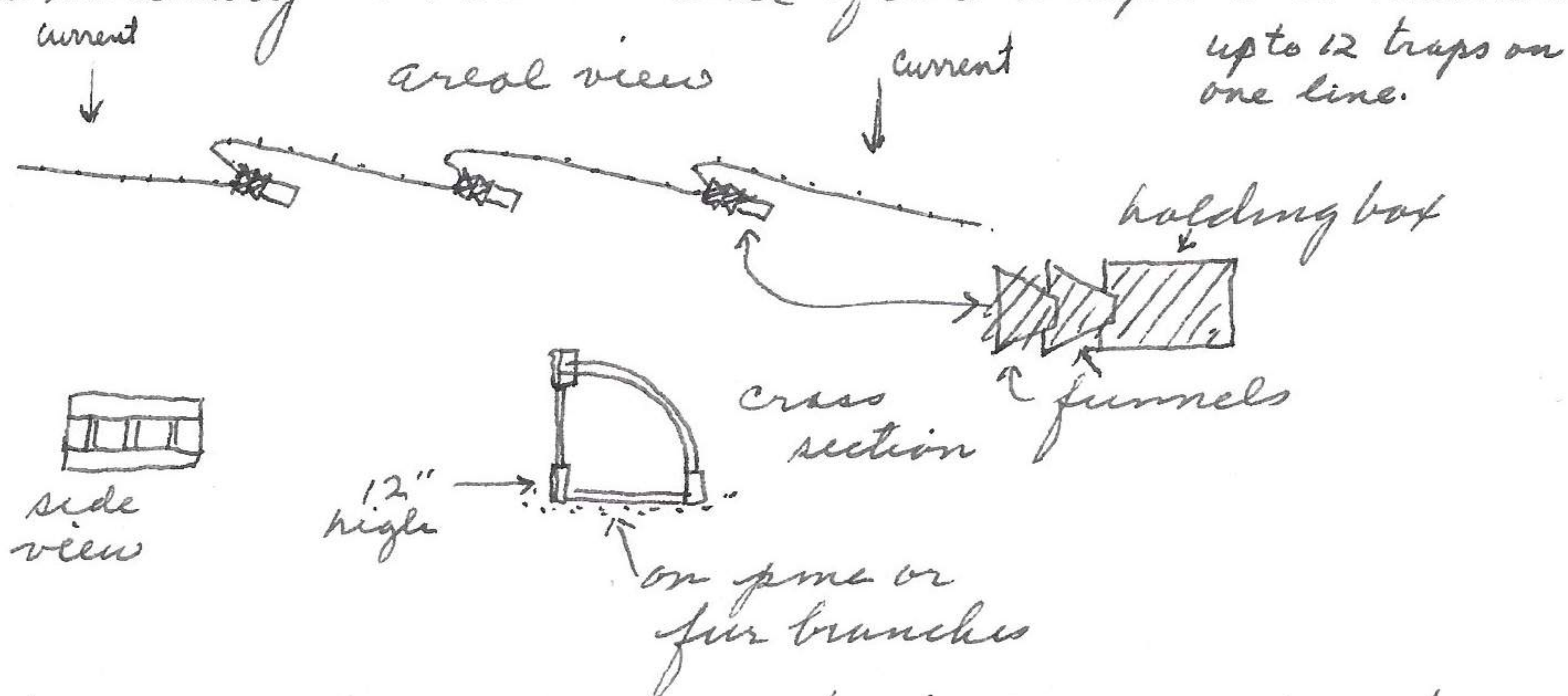


are common to eastern terminal of island. Rabbits, swallows and grackles most common birds. At ~~the~~ 12 miles west of n. Sidney observed one redtail and 2 Kingfishers. At Whyecomough noted a striped skunk and porcupine road kill within 50'. The porcupine is the most common and generally distributed of the road kills with the striped skunk a close second. Neither of these species or other kinds of mammals are common. At Truro did laundry and serviced car and at 2:20 P.M. left at mileage 56887. <sup>last evening</sup> 5<sub>1</sub> grasshoppers fed along side of road. Camped at end of abandoned road that ran into lake at 57137 below Kingsclear near Bruno. Made 251 miles today. Today observed 13 porcupine roadkills which were generally distributed. Both crows and ravens were along road right-of-way. The crows invariably left on approach of car while the raven most frequently remained. The raven can be told from crows by the accentuated wobble in walking. 2 crow road kills today.

n. of Bruno, New Brunswick, Canada

Aug 8, 1972

Min. temp 55°F. Photo 720808-1 of camp with boat pulled on dry dock on old road. Goldenrod in foreground. Left 8:00 A.M. osprey fished off camp. Country side all along the way is similar to n. New York in the fingerlakes region with glacial earned slopes with lakes and conifer-deciduous forests and cleared farmland and old reconstituted houses. <sup>at Riviere du Loup first morning done only bottom (camp dry)</sup> Continued to Pointe provincial park where we camped. This evening foamed at low tide n. to actual point. Marine biome well defined. Mud flats possible but appear supported by man's influence in area. The semipalmated plover is the most common bird. Feeds like killdeer but flies more like spotted sandpiper with rapid wing beats. Herring gulls, a black-crowned night heron, crows and seinters? were in area. Also some small sandpipers + one larger sandpiper of a solitary habit. The fish traps are numerous



all trap construction of boards and curved limbs held together by wooden dowel effect + pegs. Bows chinked base. 1 foot rise directed fish to traps unless the fence supported nets at the time they are used

Fisherman trail thru forests to point among almost climax forests -