

6961 (CLIN

11 4312

12 950 900

Levee

950 900

852 850

Levee

847 850

14 850

13 850

900 850

55' 4310

900 850

854 864 846

918 850

4309 900

23 865

24 850

850 850

BR 862

859 850

4308 900

26 950

25 1000 950

1018 1014

1000 950

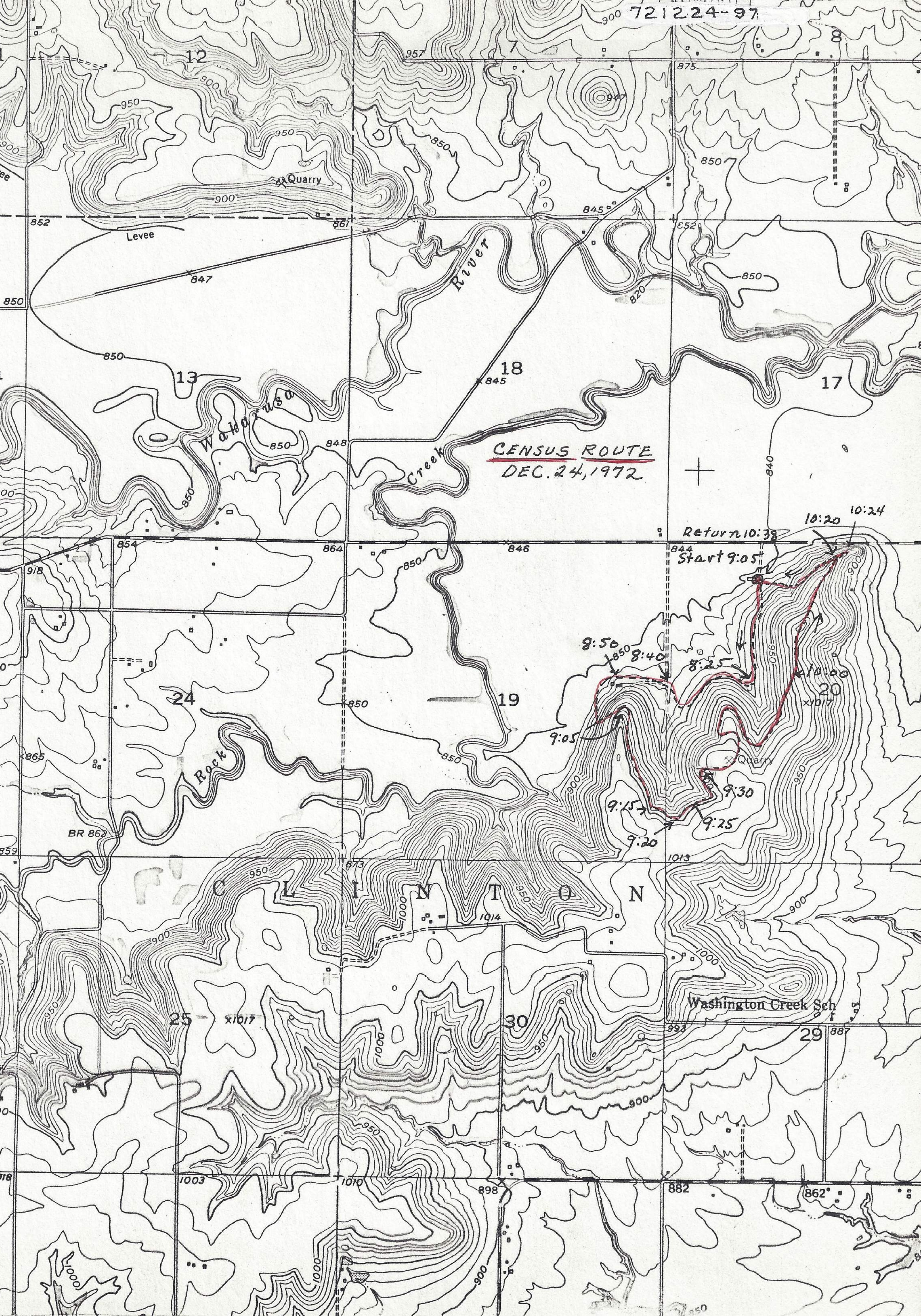
4307 1000

1018 1003

1010 898

1000 900

210 000 FEET



CENSUS ROUTE
DEC. 24, 1972

Return 10:38
Start 9:05

8:50
8:40
8:25
9:05
9:15
9:20
9:25
9:30

10:20 10:24

Washington Creek Sch

29 887

862