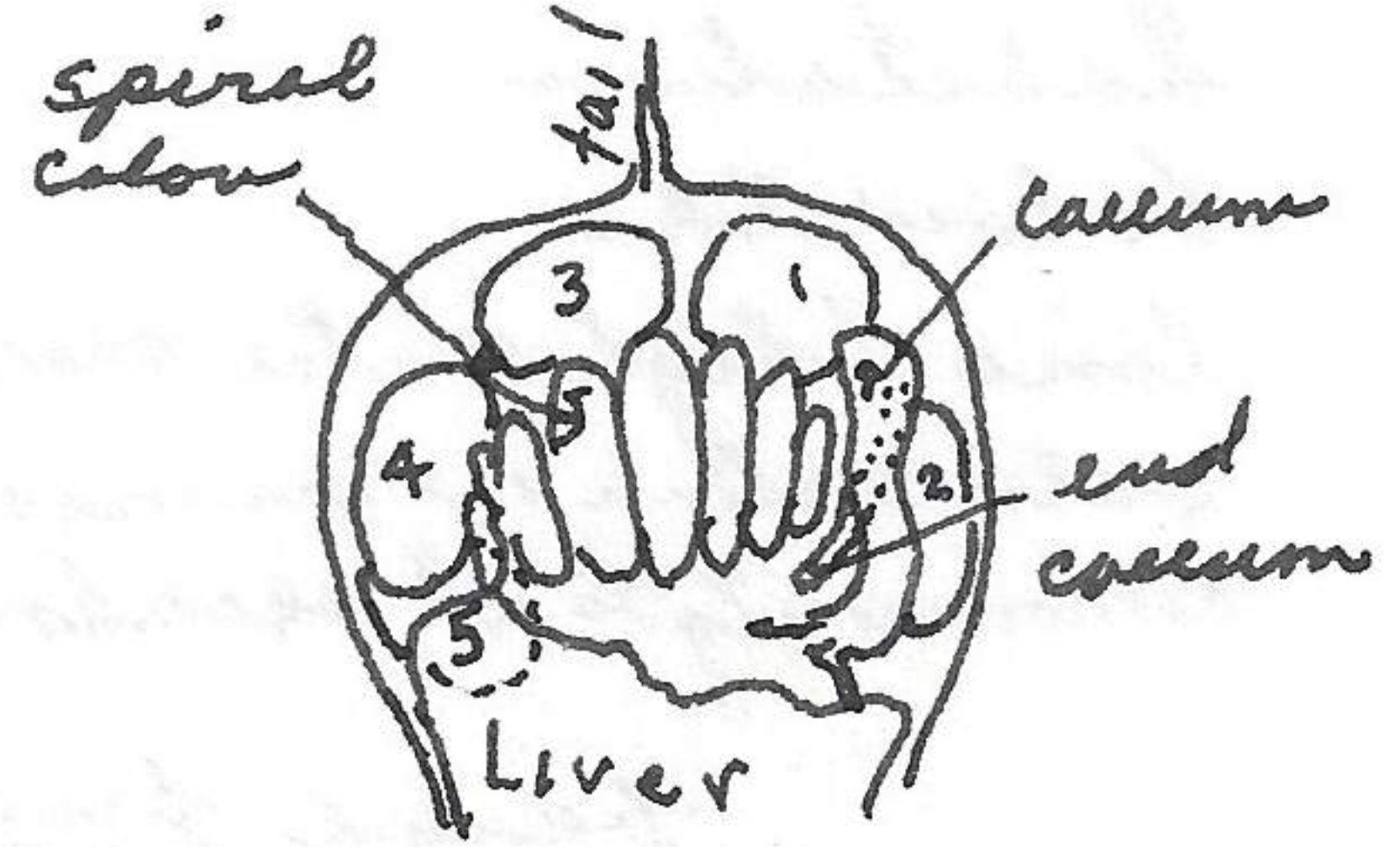
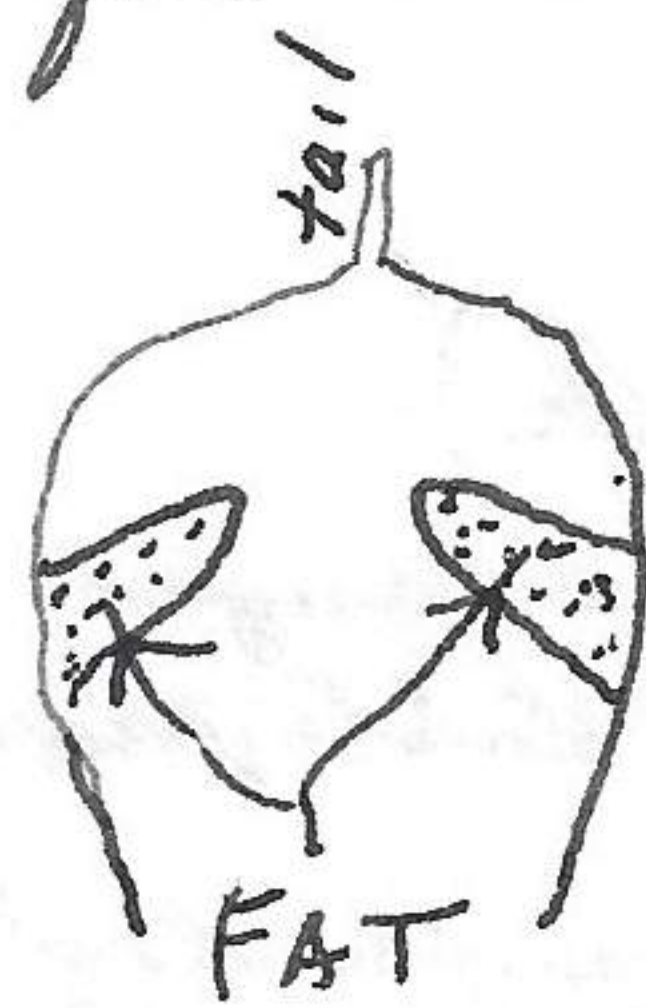


740331-2 ♀ has reabsorption coil and large caecum, both green.

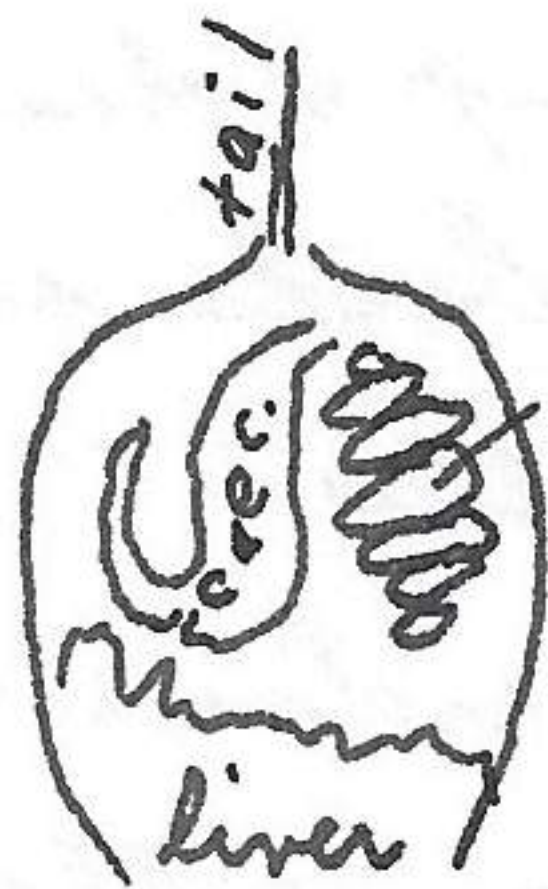
740331-3 ♀ with substantial masses of fat anterior to hind leg and continuing laterally

Small intestine yellowish brown. Caecum and large intestine green. (small intestine) former dorsal, latter ventral.



I am impressed with the thinness of skin, especially the ventral part of body of these Synoptomys. This is also true of Lemmus. The ♀ also has hip gland as is true in case of Lemmus.

740331-6 ♂



absorption coil (from surface to ventral)

740331-12 has trephine of trematod? in anterior left parietal.

mat of hair protruded through ^{open} hole of skin with wavy collagen fibers below. Also skin contact with muscle on right side at level of last rib.



The claw pad and claws (medial ventral) ^{of all Synoptomys} are a conspicuous reddish pink color

