

1974-23

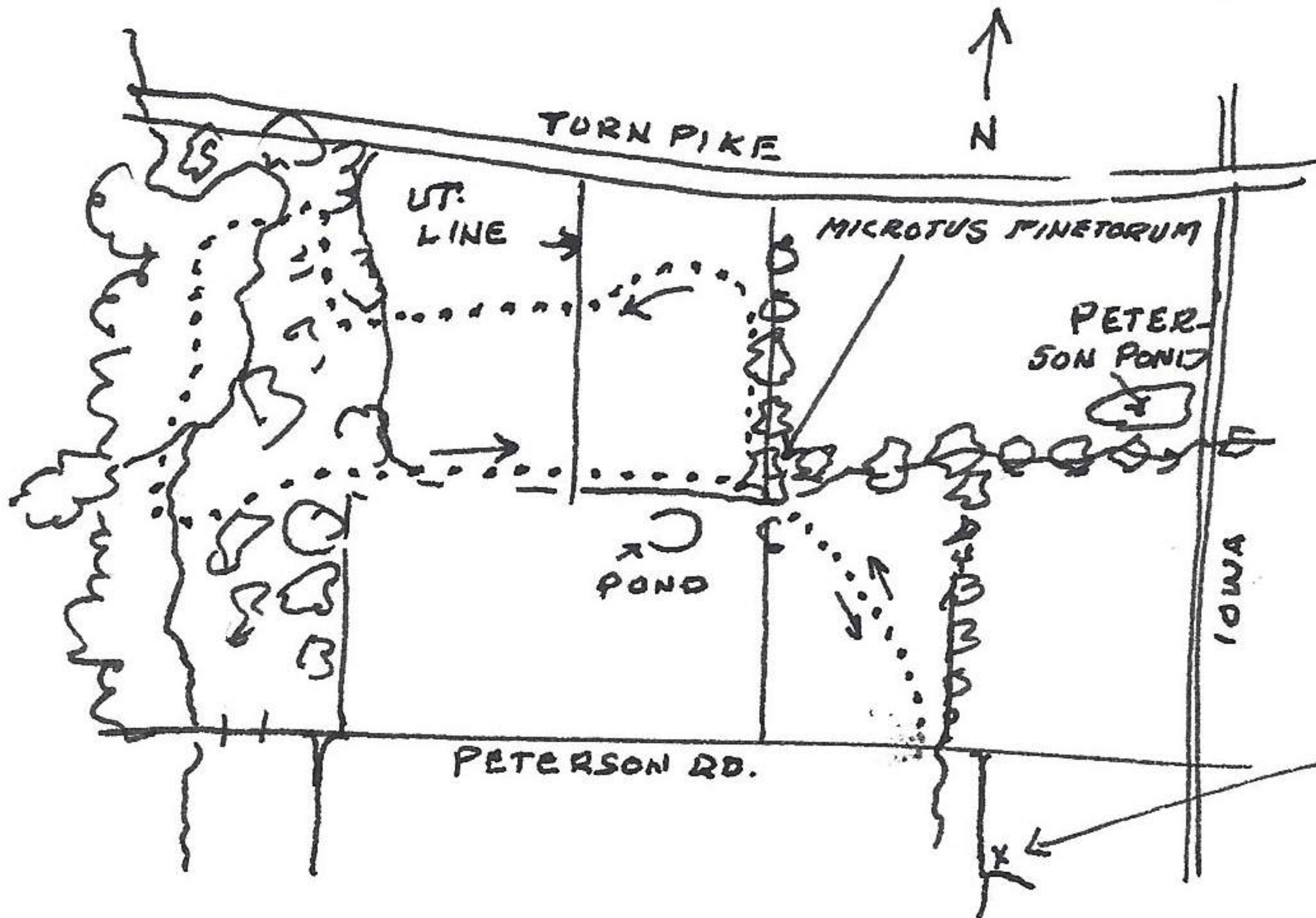
12 1/10 mi N and 18 1/10 mi. W Lawrence (P.O), Douglas Co., Kansas

May 9, 1974

made census of birds from above locality, east to Peterson Pond on Dows Street and return. Followed riparian community along drainage (Country Club North): Wilson warbler, Myrtle warbler, Tennessee warbler, rose-breasted grosbeak (♂ & ♀) call starts like robin but ends more musical, indigo bunting, meadowlark, catbird, robin, pilot black snake, bobwhite (single), redwing, lesser yellowlegs, 6 bluewing teal (2 pairs ♂ ♀ and 1 pr ♂♂), 2 killdeers, spotted sandpiper, meadowlark. A large deer (track 70 mm) left bedding grounds and ran W on N side of riparian vegetation about 20' from trees in recently plowed field. It entered trees at trail entrance. 2 other bedding spots on dry leaves held back by recent high waters. Color dark brown in contrast to lighter colors of winter.

May 10, 1974

made census of above area at 1:30 P.M. Locality from time when old post-office was used as a point of reference (check this out). Day clear to cloudy, temp approx 75°F, wind on open exposures in fields, negligible in forested areas. From under a piece of metal roofing approx. 3 x 8 feet collected a *Microtus pinetorum* in a nest. Runways left the area to other wooden doors also on ground. These doors and



pieces of metal have always produced this species as well as *Microtus ochrogaster*, *Segmodon hispidus* and *Peromyscus*. On May 9 there was a pilot black snake under the same piece of metal roofing that held the *Microtus pinetorum* today. This mammal measured:

740510-1 *Microtus pinetorum* 122-21-17-9-30gms. ♂ testis 6mm

Birds in area are: catbirds singing, cardinals singing, meadowlark, barn swallows flying lower over open fields, Wilson warbler, Tennessee warbler, indigo bunting, gray-cheeked thrush, black-capped chickadee, great crested flycatcher, purple martin, robin, house wren, red-headed woodpecker, song sparrow (2), crow, field sparrow, cowbirds in forests, bluejay, titmouse, 2 loggerhead shrike, starling, grackles, no mosquitoes, no chiggers, understory (ground) lush with vegetation mainly bedstraw. I have never seen so thick a covering. 2 of the large oaks have been downed (leaves of last year still on trees) at least partially effected.

12 1/10 mi. N and 18 1/10 mi. W Lawrence (P.O), Douglas Co., Kansas

May 12, 1974

made census of birds between Petersons Pond and ridge to west. between 10:00 AM & 12:00. Day clear, cool, temp approx. , slight wind.