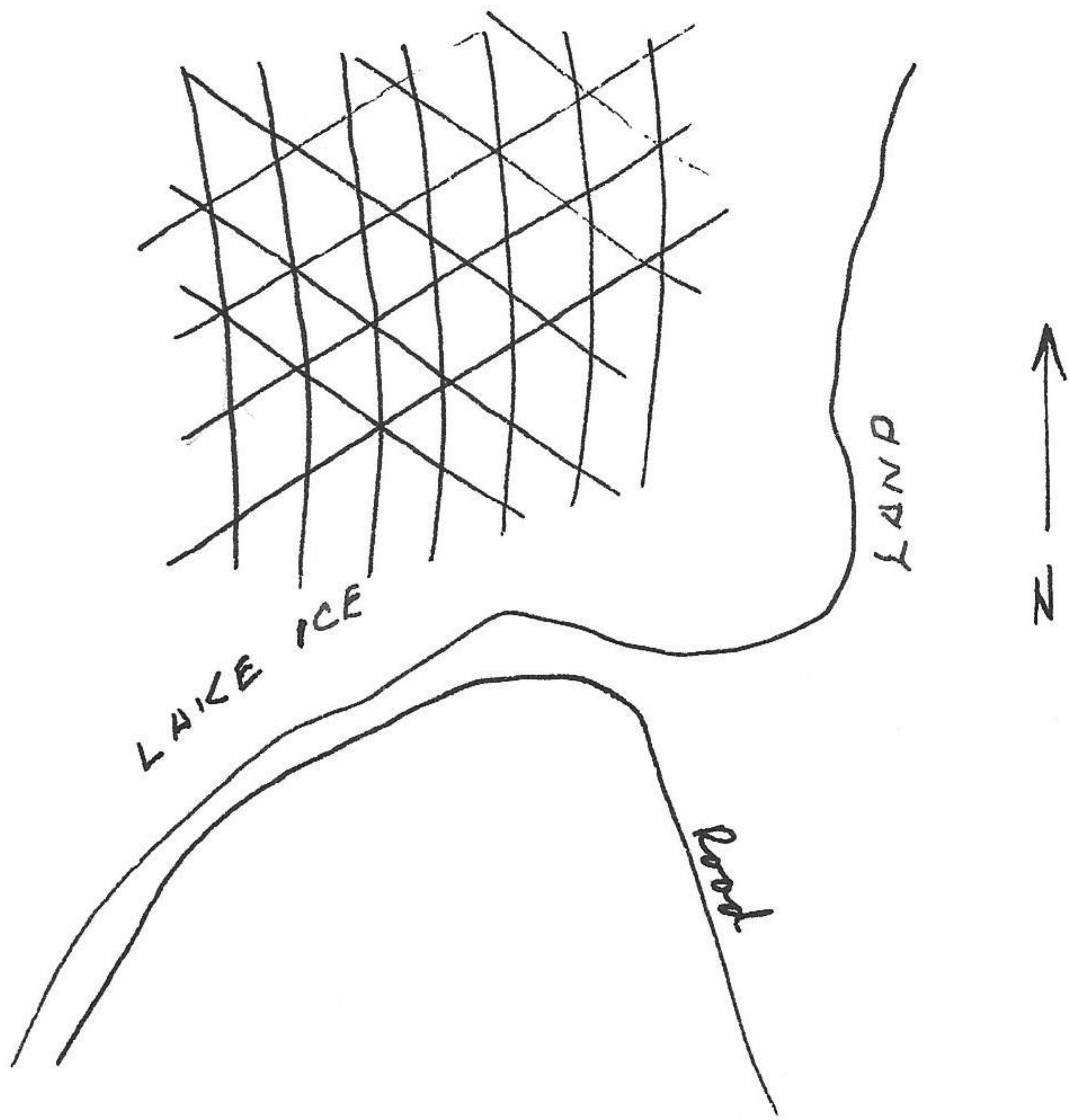


on the ice that carries out into the lake for at least half the extent of the lake and consists of three definite patterns, each about 20-30 feet apart. This pattern would suggest both compressional and tangential forces.



84.0 red bellied woodpecker. 84.2 5 tree sparrows. 84.6 by-passing circuit. 84.8

8 juncos, 12 tree sparrows. 85.0 main road + leaving Park. 86.4 shrike. 87.1 Ferguson Rd now N.

88.6 Little Slough Creek bridge. Water frozen but some new water forming on top. 89.3 4 corners

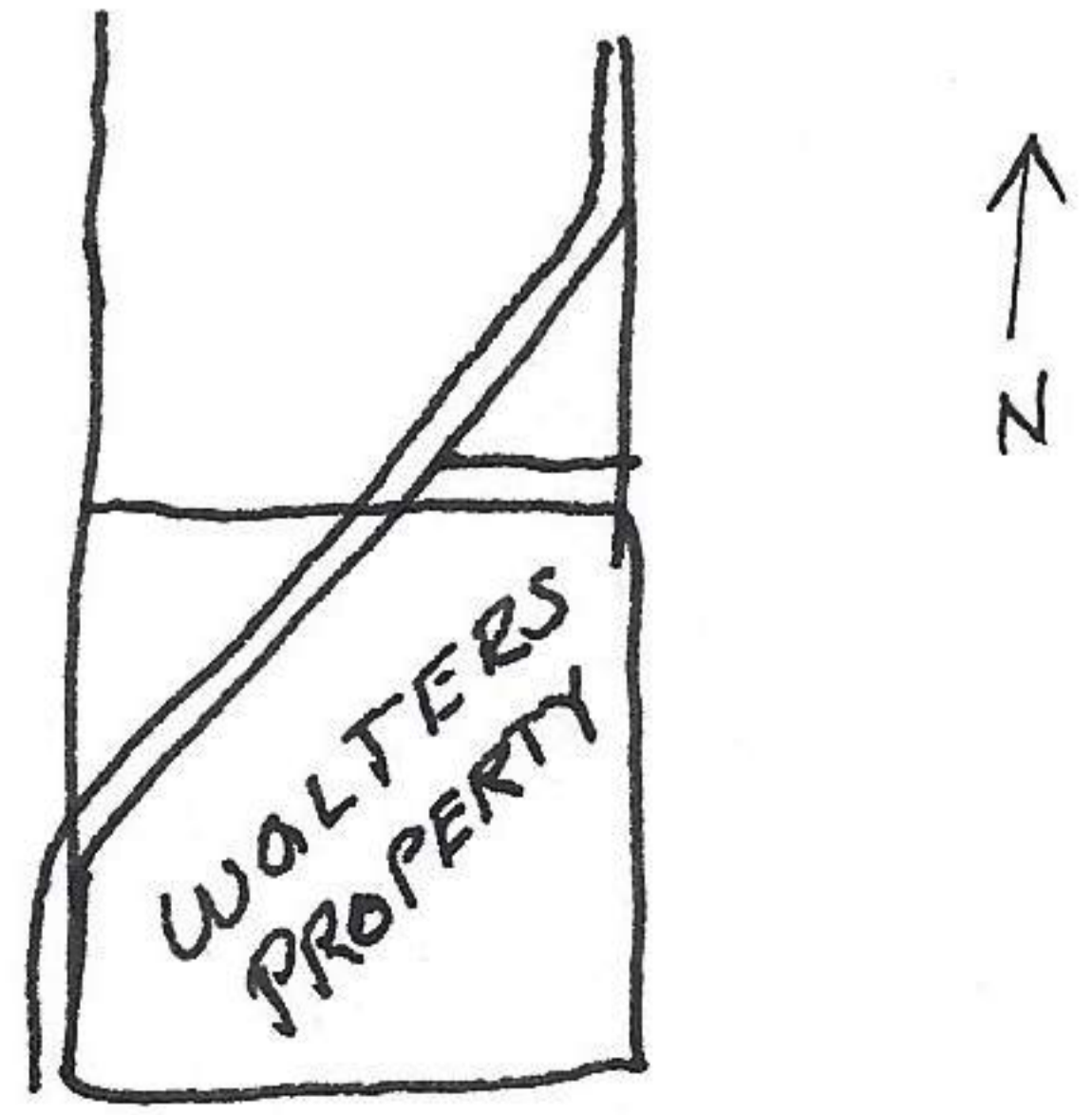
(highway 92) now W. 91.1 Ozaukee Bridge. no open water or ducks gulls etc. 91.9 same bridge + going E. 93.7 4 corners + now N. 95.2 8 tree sparrow. 95.4 4 juncos. 95.8 now W. 96.6 sp. hawk. 97.2 lake ~~lake~~ now ice. 97.4 entering Paradise Pt Park.

97.5 2 redtail. 98.4 now left. 98.7 2 Cardinals, 8 tree sp + 2 juncos. 98.7 2 tree sparrows. 99.8 fox squirrel. 97900.0 back on center road + now E. 00.5 Lake N Paradise Point all ice + no birds. 00.6 watched a ♂ marsh hawk catch microtus ochrogaster.

and first cleaned 80% of fur from mouse, then started head lumps intestines (which it did not eat) and finally entire back end of mouse. First cleaned feet, then bill on grasses by forcing into grass and moved with end of bill as pivot, then bill with feet. It left and commenced hunting immediately, dropping twice to ground but without success. 01.5 leaving Park at <sup>2:10</sup> ~~4:40~~ P.M.

03.6 2 tree sparrows. 03.8 8 tree sp. 2 juncos. 15.8 Little Slough Creek bridge. Except on extreme N exposures there is no snow in area. 07.1 2 meadowlarks, 07.2 Cowbird. 11.8 Big Slough Creek Bridge. Ice shows sign

12.9 End Ferguson Rd. 13.9 SE Corner Perry area at 2:30 P.M. 15.6 sp. hawk, 16.5 highway 24. 17.2 5 starling. 19.2. Kaw River. Highway 438 to E at <sup>22.5</sup> ~~22.5~~. 23.2 2 meadowlarks. 23.8 redtail.



18-85