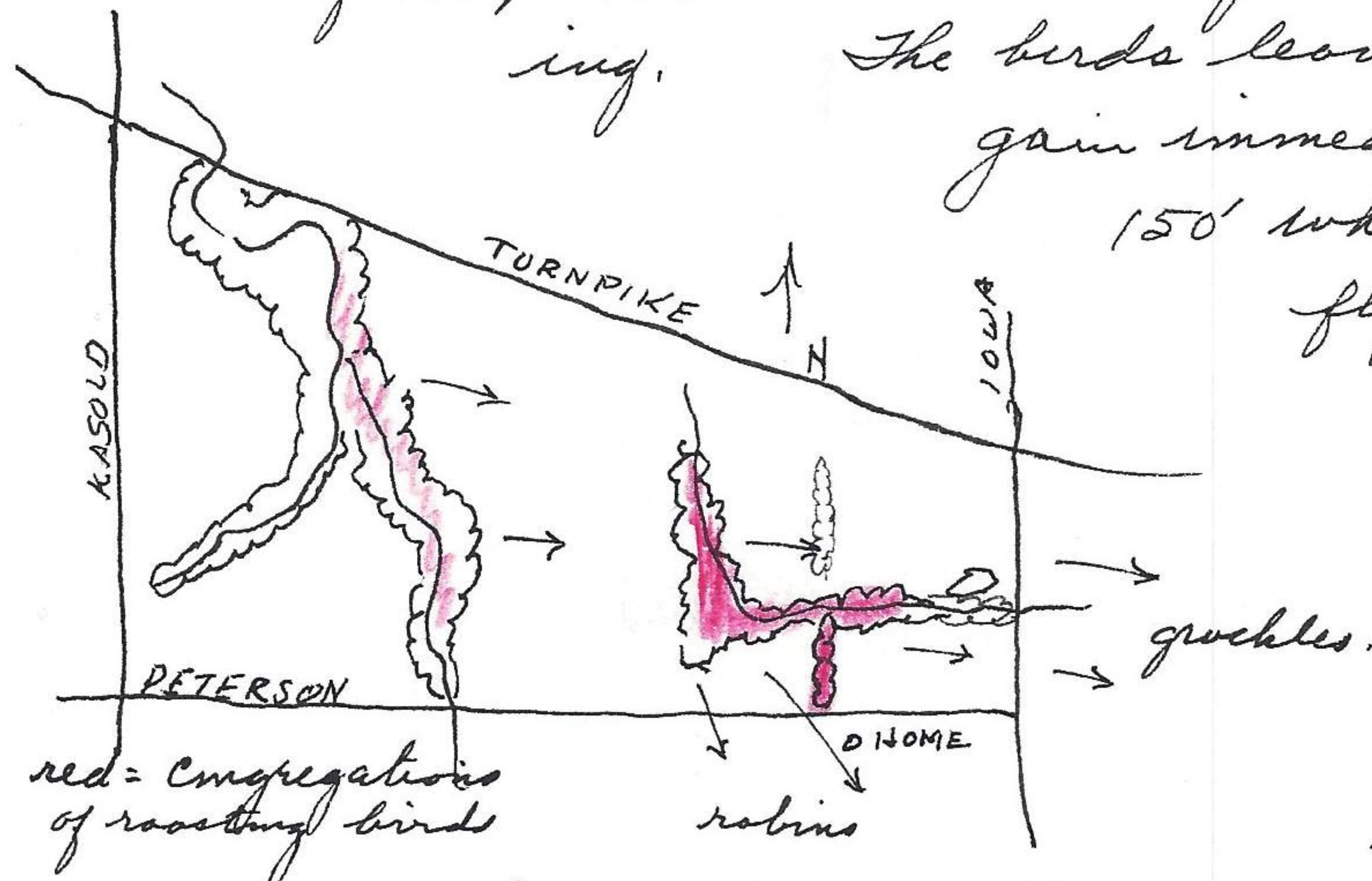


402 Yorkshire, Lawrence, Douglas Co., Kansas

Oct 7, 1976

Noticed movement of robins and ^{redwings} grackles from at least 6:50 AM to 7:20 AM when most of activity ceased. Birds left roosting area as individuals or loose groups and covered a greater angle of dispersal than the long lines of arrivals in the evening. The birds leave at a fast speed and gain immediately an altitude of 100' to 150' when they level off and fly directly but frequently maneuver like a ball with abrupt ^{minor} changes of direction.



It appears that robins move toward the city while grackles parallel the north end of city. In the evening the grackles & robins arrive in long lines and enter the roosting area rapidly, either dropping down abruptly or gliding in at a low angle. Sometimes groups will socialize in tall trees or feed in fields adjacent to roosting area before moving into trees.

Oct 8, 1976

Min. temp 26°F at home. There did not seem to be the usual numbers moving from roosting area this A.M. but this evening the usual numbers were congregating in the fields & trees.

Perry Reservoir, Jefferson Co., Kansas

Oct. 9, 1976

Checked birds at Perry Reservoir. Left 402 Yorkshire, Lawrence at 7:45 A.M. Mileage 51.8, wind from N with smoke approx 12° above horizontal, sky clear, temp. , moon about 1 hour from setting in W. Will keep complete list of birds observed. Grackles & robins have left roosting area. 53.0 meadowlark. 53.4 redtail on top telephone post and back to sun. 53.7 Kasold and Farmers Turnpike, 53.9 2 redwing blackbirds. 54.2 20 grackles and moving W from roosting area. 54.6 4 starling. 56.7 meadowlark, starling. 57.7 meadowlark and 2 starling 57.5 pond & 2 killdeer. 57.7 3 starling, 1 meadowlark. grackle, 58.7 bluejay, mourning dove. 59.8 Leecompton & Farmers Turnpike, 3 meadowlarks. 61.2 meadowlark (2), 61.6 3 starling. 62.4 4 starling. 63.3 Leecompton bridge. no great blue herons and