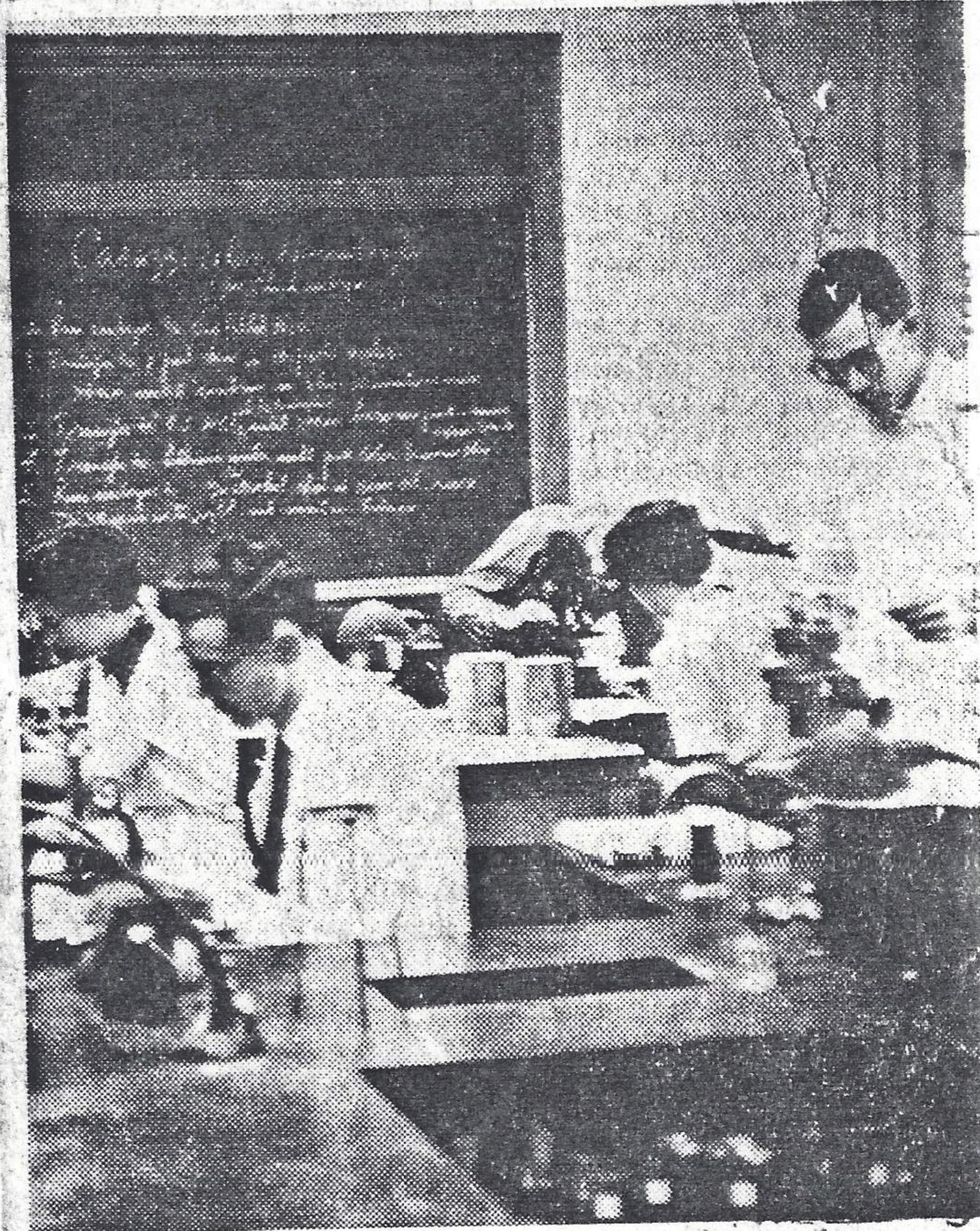


LAWRENCE DAILY JOURNAL
JAN 23, 1957

(INSERTED IN JOURNAL DEC 31, 1961)

Grow Critical



MICROSCOPIC, INDEED!—Here are students in a microscopic techniques laboratory in KU's Snow Hall, described in the Board of Regents report as the most heavily used laboratory facility in the state schools. They are "elbowing" their way through study. They are not undergraduates, but advanced and graduate students.

*Laboratory at University of Kansas where
Histology and Histotechniques was taught
by James W Bee. Histology was mainly
for premedical students.*