

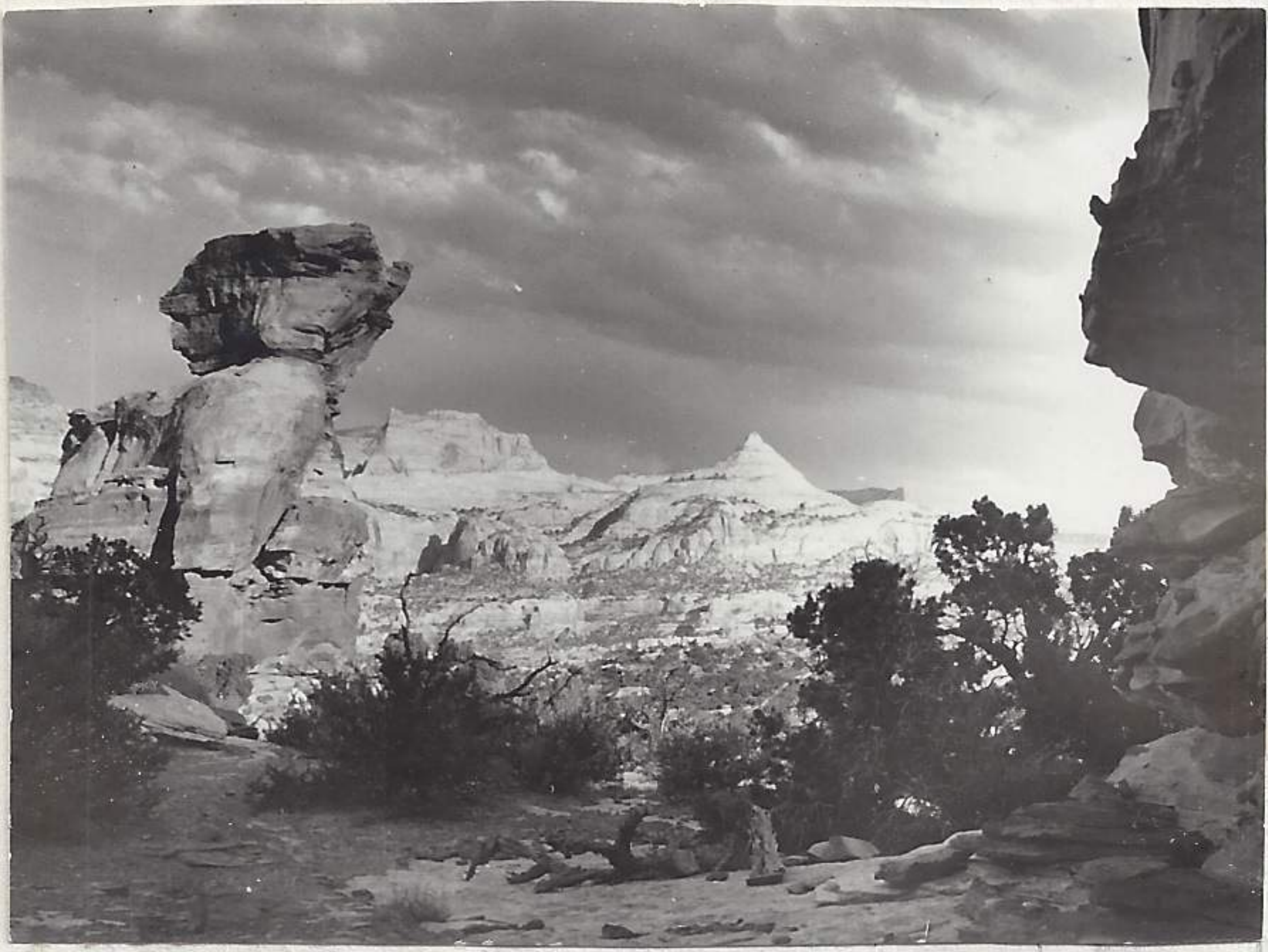
380613-127
 Stomach analysis of nighthawk ♂ (Coll. no 9 of George Cannon)

Schneumonidae
 Elyatridae
 Coleoptera
 Scarabidae
 Miridae
 Formicidae
 Diptera

Families represented.

after dinner and having completed our mounting decided to hike over to the natural bridge on the north side of ~~Capital~~ ^{Grand} Wash. The four of us made the trip. We had been told by Clarence Chestnut that this trip would take us about six hours and was advisable to take all day, being our only chance and opportunity to take this trip, left knowing that it might be dark on our return trip.

General itinerary and orientation: The section of the reef traversed lies between Grand and the Fremont River wash. The entire country dips to the east and the drainage conforming, either flowing north, south or east. The route covered is mainly on the peripheral edges of this elevated platform and is passable with a little exertion while the area east and toward center is nearly impenetrable with highly camouflaged surfaces and deep chasms. In contrast to these erosional canyons are the higher symmetrical pinnacles and prominences which outline the eastern skyline. The western edge of this section is a sheer cliff several hundreds of feet high and probably acts as a barrier to the larger animal forms. When on top one finds the Totipos and Navaho in evidence and it is this upper level that one finds the beautiful but grotesque hoodooed effects produced by the Navaho.



1-6-13-38

