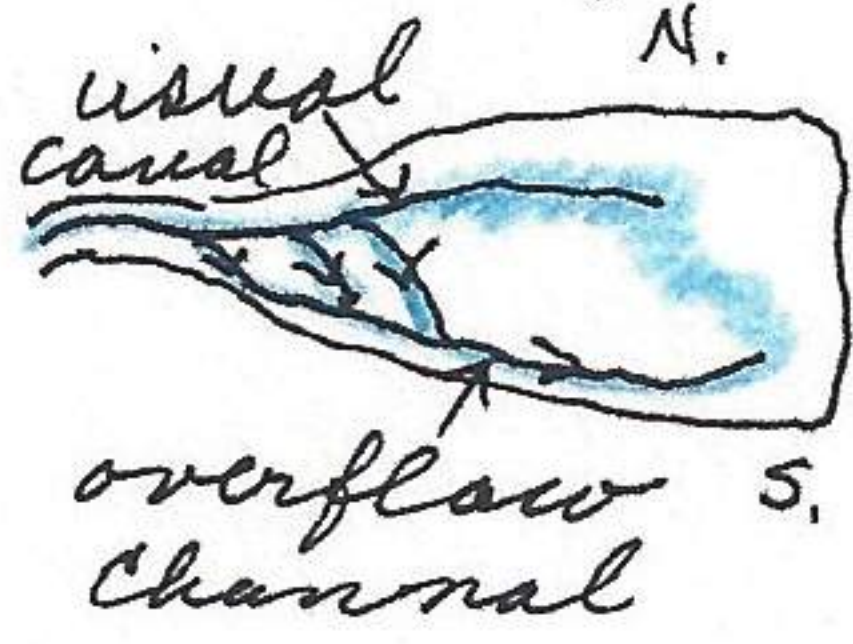
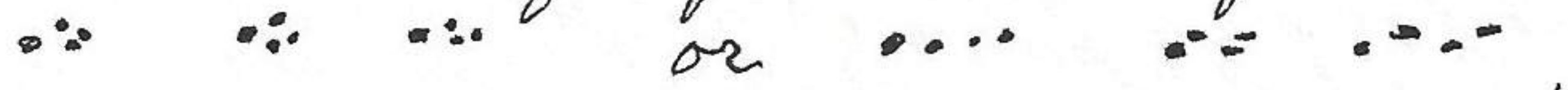


leads directly to the pond and which is located on the N side of the drainage area. The water is now mainly flowing along S side of drainage.



Arrive fence row (Yorkshire) at 12:30. Continued to next orange fence row (along utility line. no birds observed in this distance between Yorkshire fence row and the utility line fence row except one bluejay.

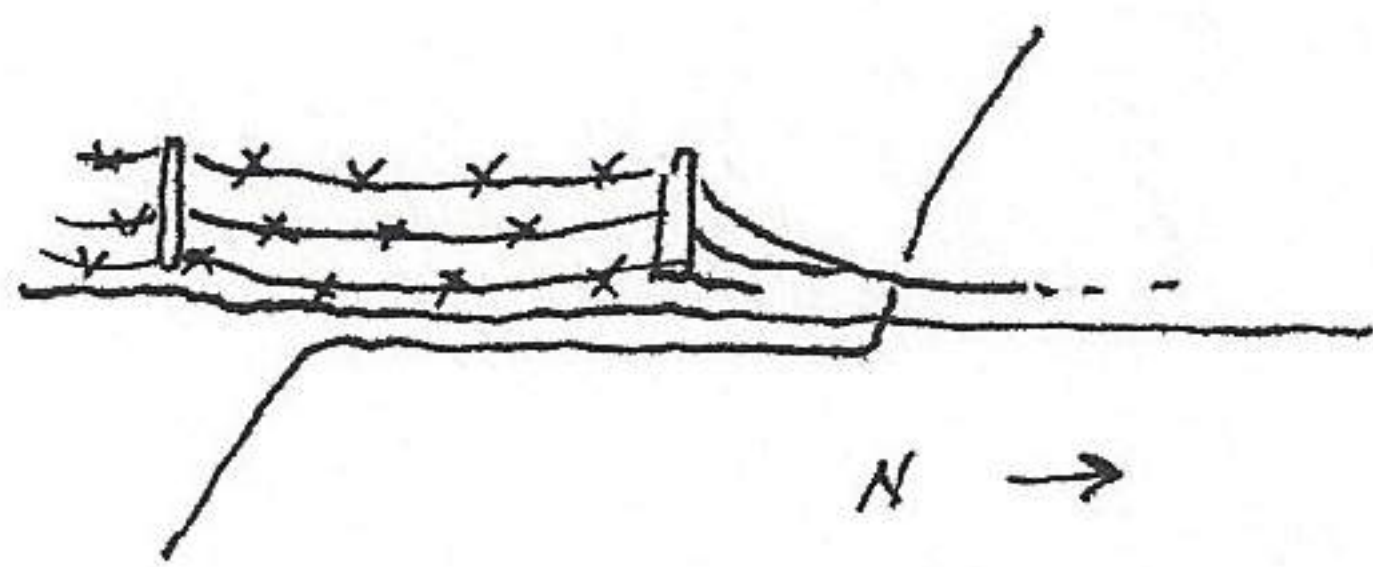
Continued 1/10 mi N along fence row and then coyote tracks left timbered area and trended NW across the open field. The gait now from walking to running. For the distance along this fence row observed 8 juncos, 2 chickadees and one redwing blackbird. The tracks across the field were regularly ~~SW~~^N except three occasions when it followed a bare contour ridge for 10'-20' to the N. The tracks were of 2 patterns separated by 5 foot intervals thus:



At one point and without directional deviation but merely dropping back slightly on its hind legs deposited a fecal dropping of the following dimensions.

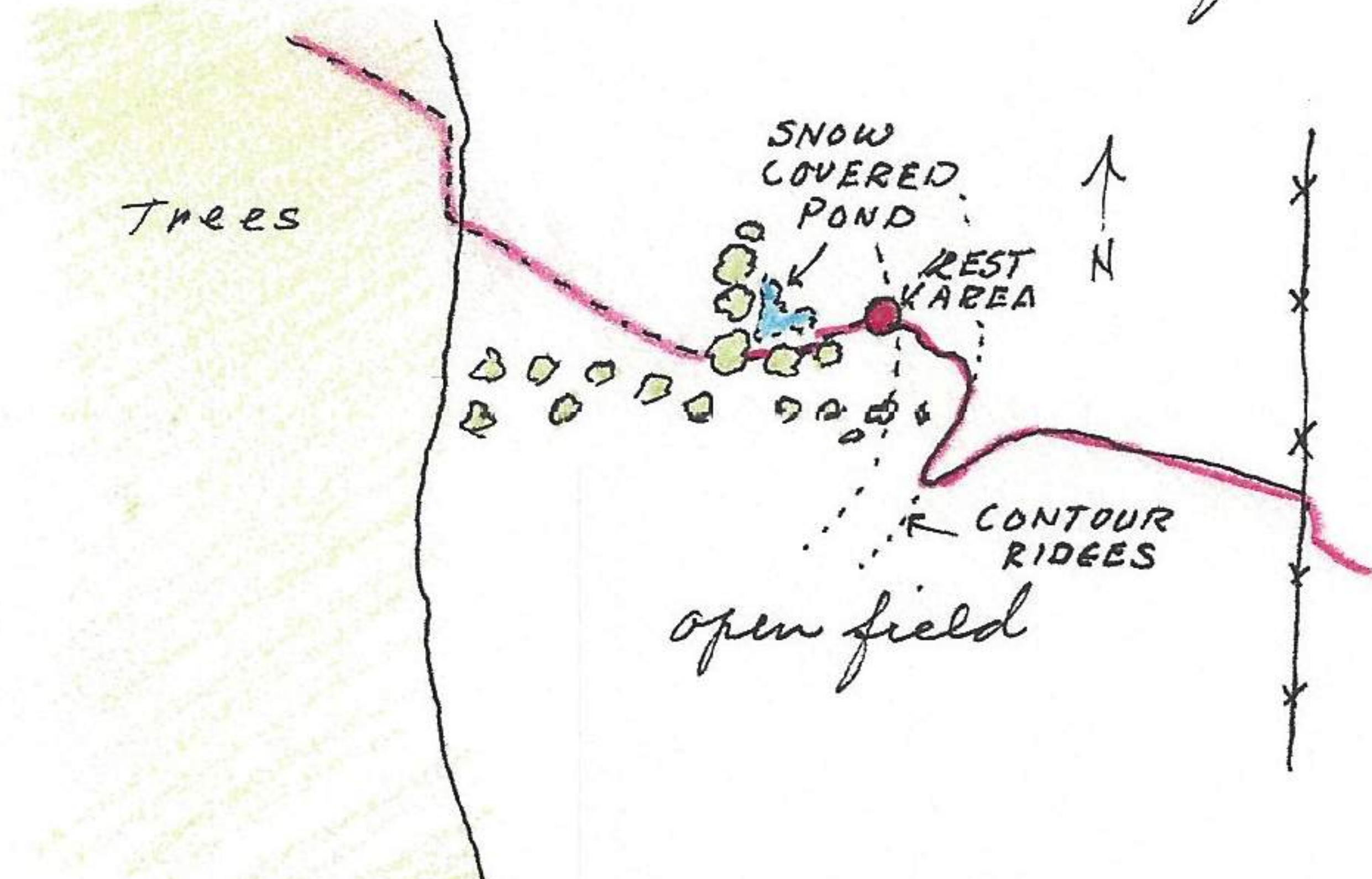


at the fence line it deviated twenty feet to low strand of fence but crawled under the line (12" high) rather than step over it. at one time, and without losing



rhythm of motion (running or fast lope, turned SW for 40' and then followed snow free contour ridge for 20' before continuing NW.

On W side of fence it continued NW except one deviation to the SW for approx. 100', thence N, across a swale



of grasses (all other parts of field plowed) and came to rest on an exposed grassy slope (W exposure) where it it rested until I came along (40' away but hidden) at which point it left resting slope and ran W along bases of willow trees and thru the small shrubs without

regard of barrier effect and thence across the open field to the NW. The interval between sets of tracks varied from 6' to 12'. At edge of forest it stopped, looked back and the continued (1:20). For the first 100' it followed the thick trees & shrubs at the border of the field but then left and followed thru forests to the NW. From the time the coyote left the forests and went out on to open fields it trended in exactly the direction of its den. The route thru the forests was NW toward its den along the Deerfield drainage. It dropped down into a small drainage