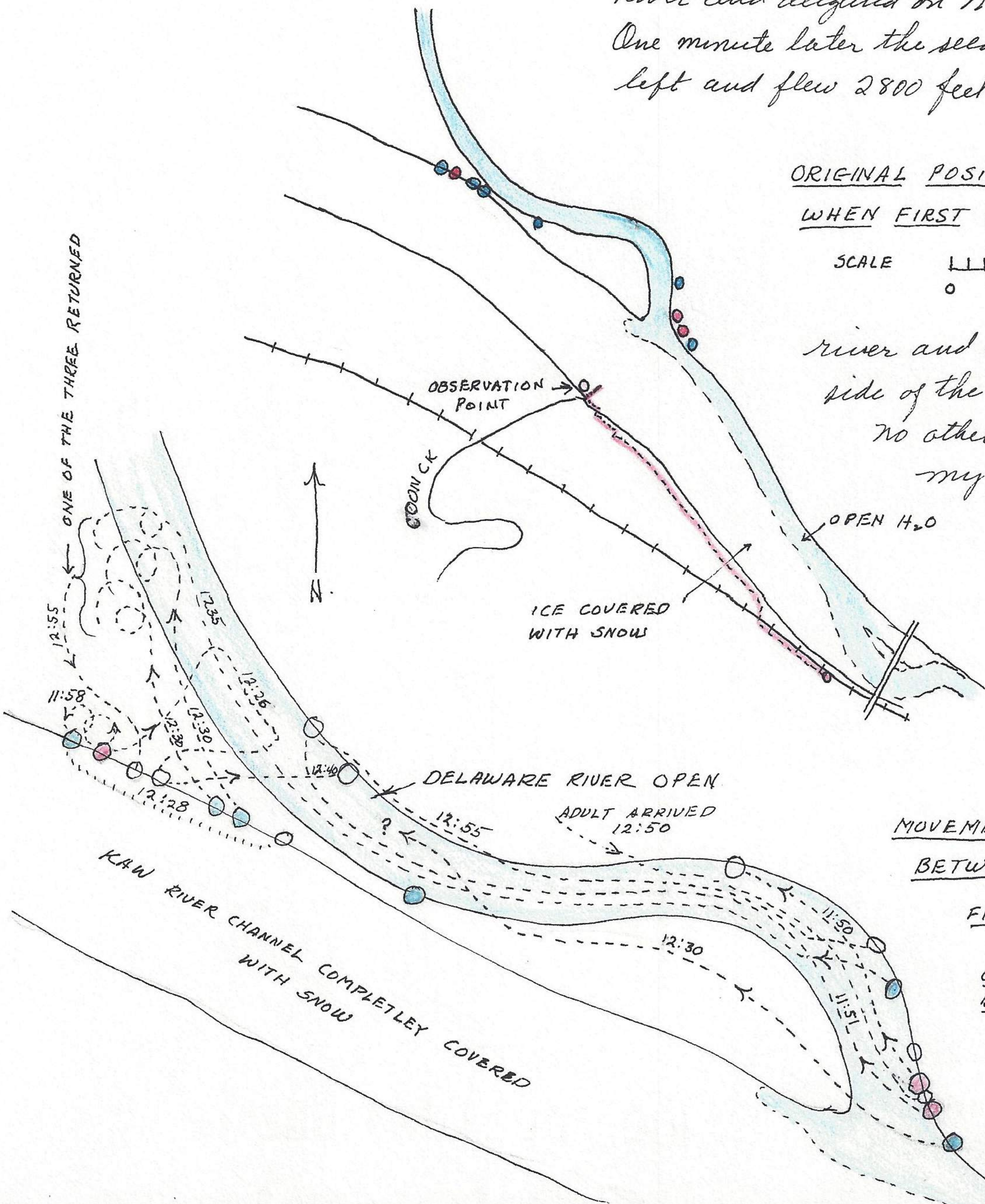


03.1 Leempton road. 03.6 sparrow hawk 03.8-^{10' apart} E end Leempton bridge. 2 adult bald eagles on N side 900 feet downstream. When I walked out onto bridge ~~to~~ one of the two left and flew 300 feet down river and alighted in another tree. This was at approx 900 feet away from the eagle when it left. Drove thru Leempton and left car at railroad tracks N of town at 04.6. at 11:08. Walked thru riparian forest part of way and on S side forests at junction of the fields to mouth of Coon Creek, arriving at 11:45 A.M. Just before arriving at mouth of Coon Creek left my position on south side of riparian forests and walked thru forests to N until 10' from N edge and then walked 50', thence to upper river bank and walked another 50' then at base of bank for fifth feet, then N out onto the river channel for 50'. It was only when I left bank and started out onto the channel that the first eagle left. It flew 1100 feet up the Delaware River and alighted on N side of this river. One minute later the second adult eagle left and flew 2800 feet up the Delaware



ORIGINAL POSITION OF BALD EAGLES WHEN FIRST APPROACHED 11:50

SCALE 0 1000' 2000'

river and alighted on N side of the Delaware River. No other eagle reacted to my presence at this time by leaving their position on the river bank. Returned to base of bank on W side of the

MOVEMENT OF BALD EAGLES BETWEEN 11:50 AM- 1:00 P.M.

FIGURE ENLARGED FROM ABOVE

ORIGINAL POSITION OF BALD EAGLES COLORED

MOUTH OF DELAWARE RIVER