

Plan to survey this area from time to time and compile a seasonal aspection of the fauna. This census of today should document the cottontail population. The census of Feb. 10 was three this same area and as the census of today, bird life is indeed scarce in the area.

Ramada Inn, Lawrence, Douglas Co., Kansas.

February 18, 1979

On north slope below the inn noticed a trail of Blarina in the snow. It moved under the new snow and travelled an irregular course in a 35' diameter area. Trail occasionally went through basal snow and reappeared 2 or feet beyond. Seemed to be concerned with weed stems that stuck up thru the snow. On the entire width of the snow covered golf course did not see a single cottontail track (over 1/2 mile),

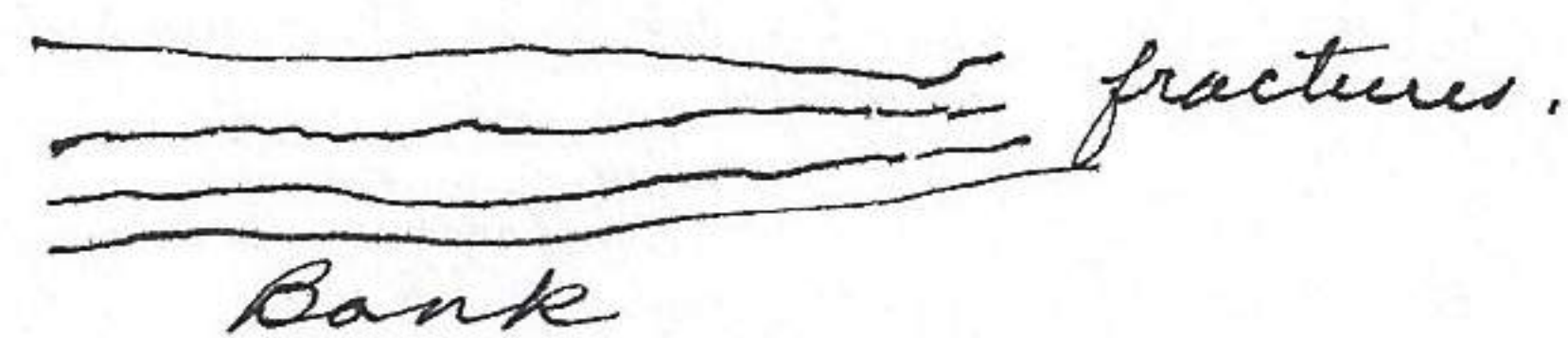
Kaw River, Lawrence, Douglas Co., Kansas

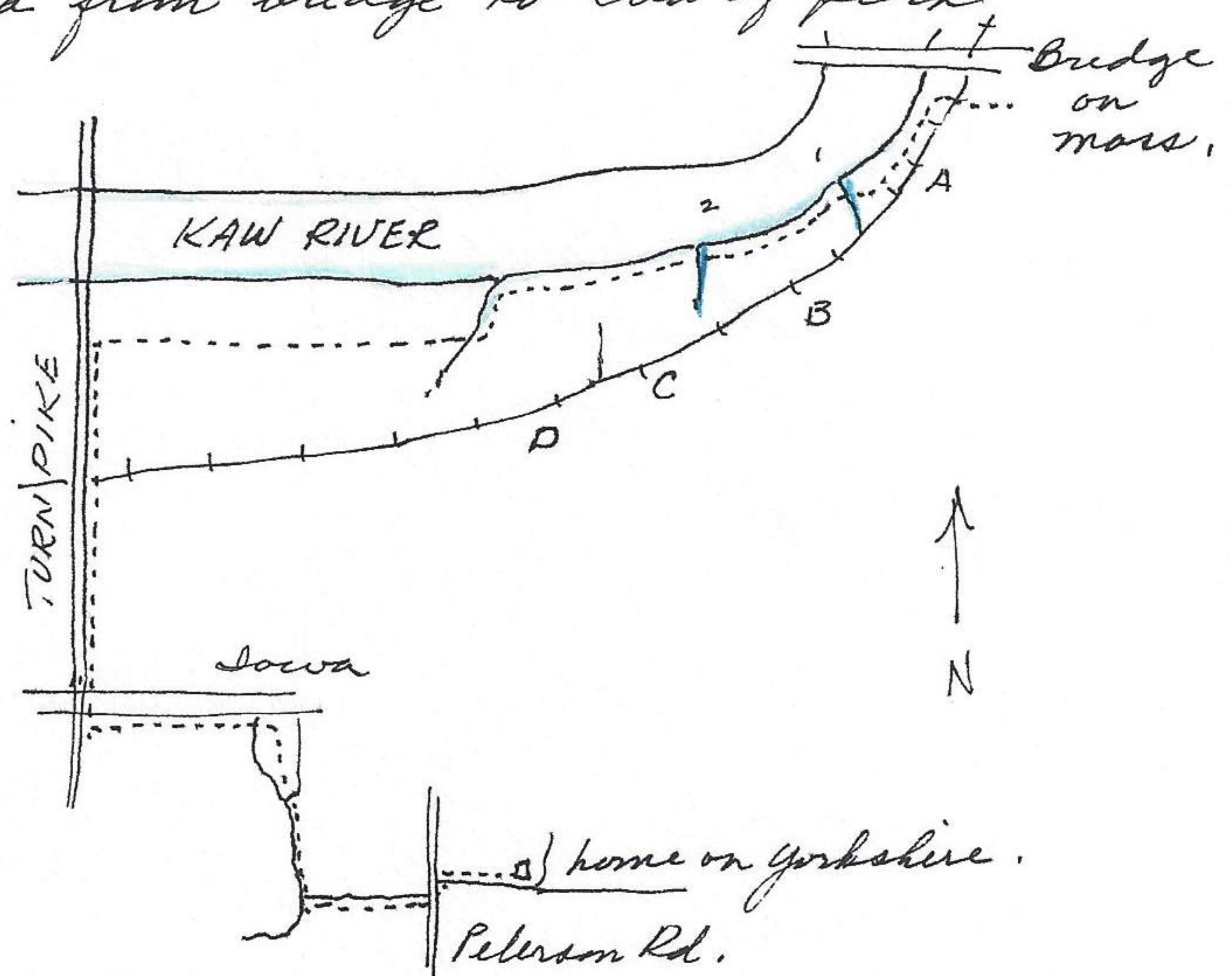
Feb. 20, 1979

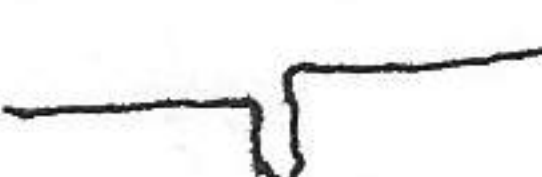
walked home from town via Kaw River, turnpike right-of-way. Checked on birds and mammals thru park area from bridge to end of park beyond waterworks area. Left bridge 9:15 A.M., juncos, bluejay.

approx 18 squirrel nests in trees in A, mainly young cottonwoods.

Rabbits scarce. 9:30 creek, frozen as is river, beaver cutting trees on S side creek at mouth. Fracture in ice along edge of river first near bank, second 20' out and 3rd 30 or so feet.

 fractures.
Bank



The riverward side always higher if ice has been displaced —  crack to 1 1/2 inches wide, someplace water overflowed crack. 9:35 second creek (odoriferous, clay colored, from waterworks plant. Open. Beaver cut six small trees 1 1/2 to 3" diameter and 2 chewed but not felled. Area B has fewer tree nests than A, but trees larger. Another area of beaver activity. 20 trees cut, 6 down. 9:48 passed thru C, fewer tree nests of squirrels. 9:45 across B of picnic area. 9:45 creek, not open. dog had eaten dead mallard uncovered from snow. 10:01 bridge.