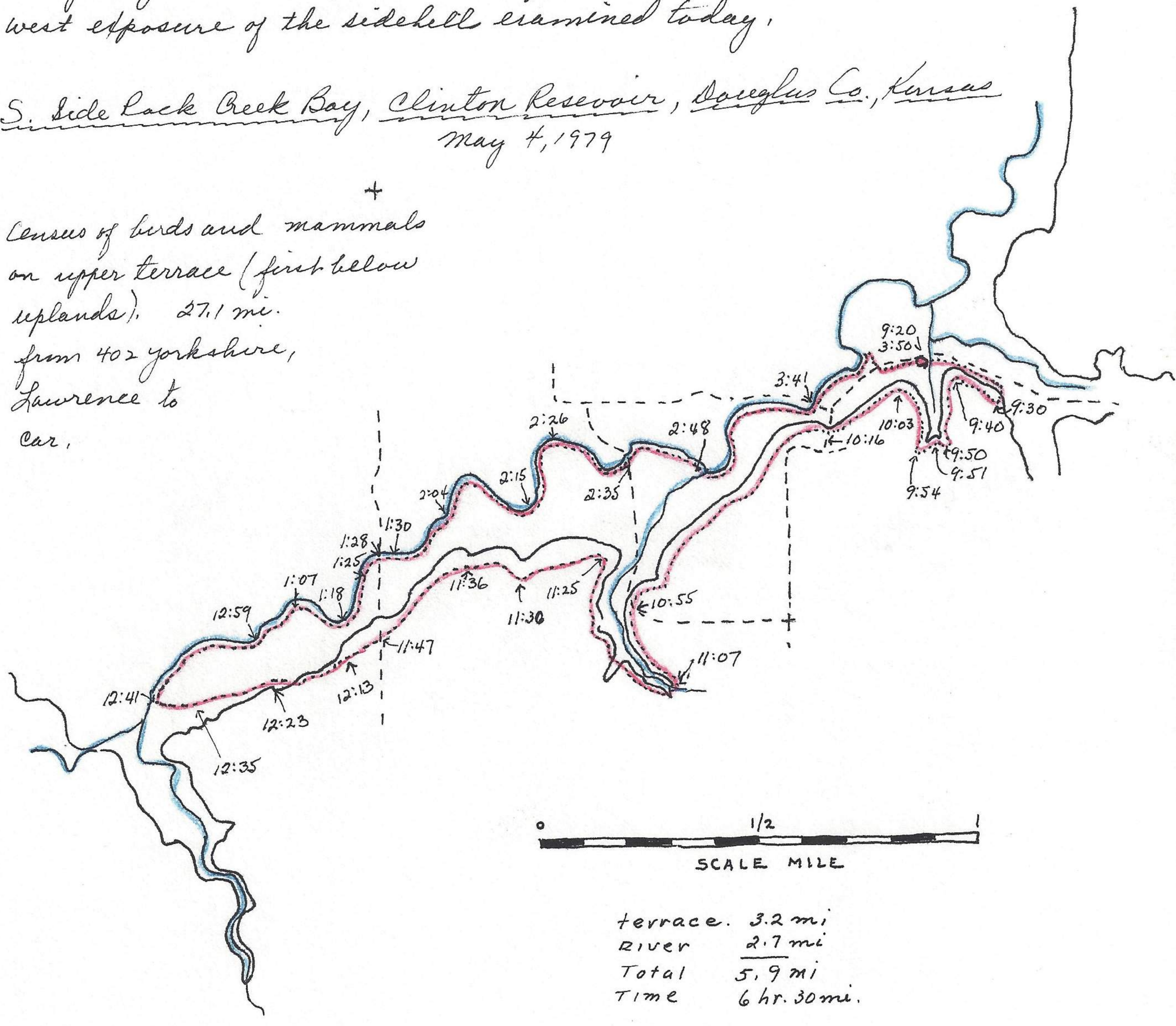


dark bases. In closed car temp 122°F. In shade 74°F. 1 mi. E on road noted eastern kingbird. From Clinton Reservoir dam noted hills of deciduous forest have nearly lost the winter color of trees and blossomy greenish-yellow (variegated) with about 20% winter color still showing thru. In Lawrence I noticed that the red bud was still in good color but some trees slightly faded. The fact that there were only a few red buds in the area examined today might mean that there are fewer red-buds on the warmer west exposure of the sidehill examined today.

S. Side Lack Creek Bay, Clinton Reservoir, Douglas Co., Kansas  
May 4, 1979

+  
Census of birds and mammals on upper terrace (first below uplands). 27.1 mi. from 402 Yorkshire, Lawrence to Car.



35 minute drive. Temp 49°F. Few high clouds, rain showers predicted this am. clearing this afternoon and temp to be in the 60°F. noted earlier today that on K.U. Campus (first E-W street S of hill, Sunnyside ave) the elm trees that line the N side of street are in nearly full leaf while the sycamores on the south side of the road are just beginning with very small leaves and full inflorescence.