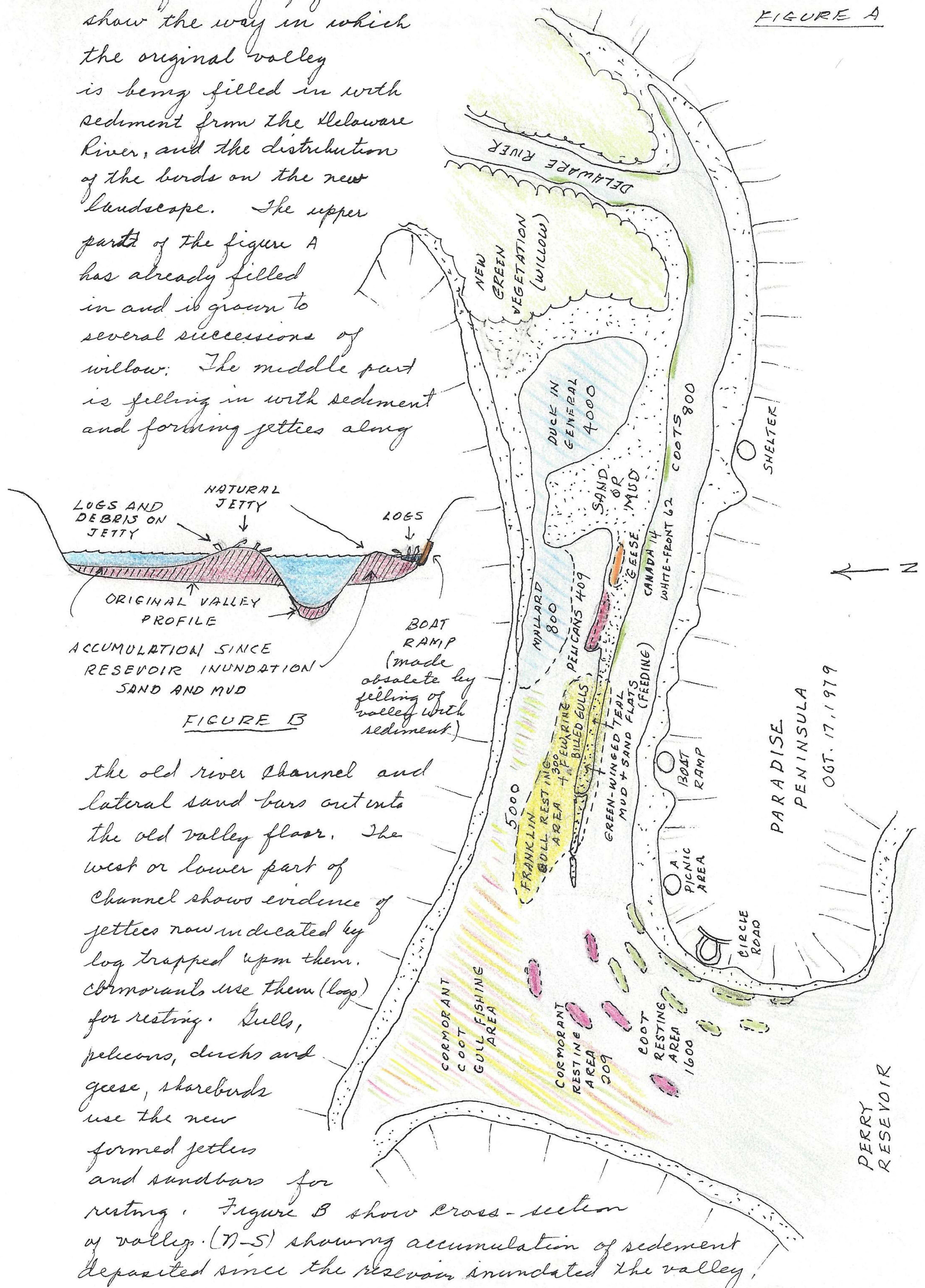


The following figures show the way in which the original valley is being filled in with sediment from the Delaware River, and the distribution of the birds on the new landscape. The upper part of the figure A has already filled in and is grown to several successions of willow. The middle part is filling in with sediment and forming jetties along

FIGURE A



LOGS AND DEBRIS ON JETTY
 NATURAL JETTY
 LOGS
 ORIGINAL VALLEY PROFILE
 ACCUMULATION SINCE RESEVOIR INUNDATION SAND AND MUD
 FIGURE B

the old river channel and lateral sand bars out onto the old valley floor. The west or lower part of channel shows evidence of jetties now indicated by logs trapped upon them. Cormorants use them (logs) for resting. Gulls, pelicans, ducks and geese, shorebirds use the new formed jetties and sandbars for resting. Figure B show cross-section of valley (N-S) showing accumulation of sediment deposited since the reservoir inundated the valley.