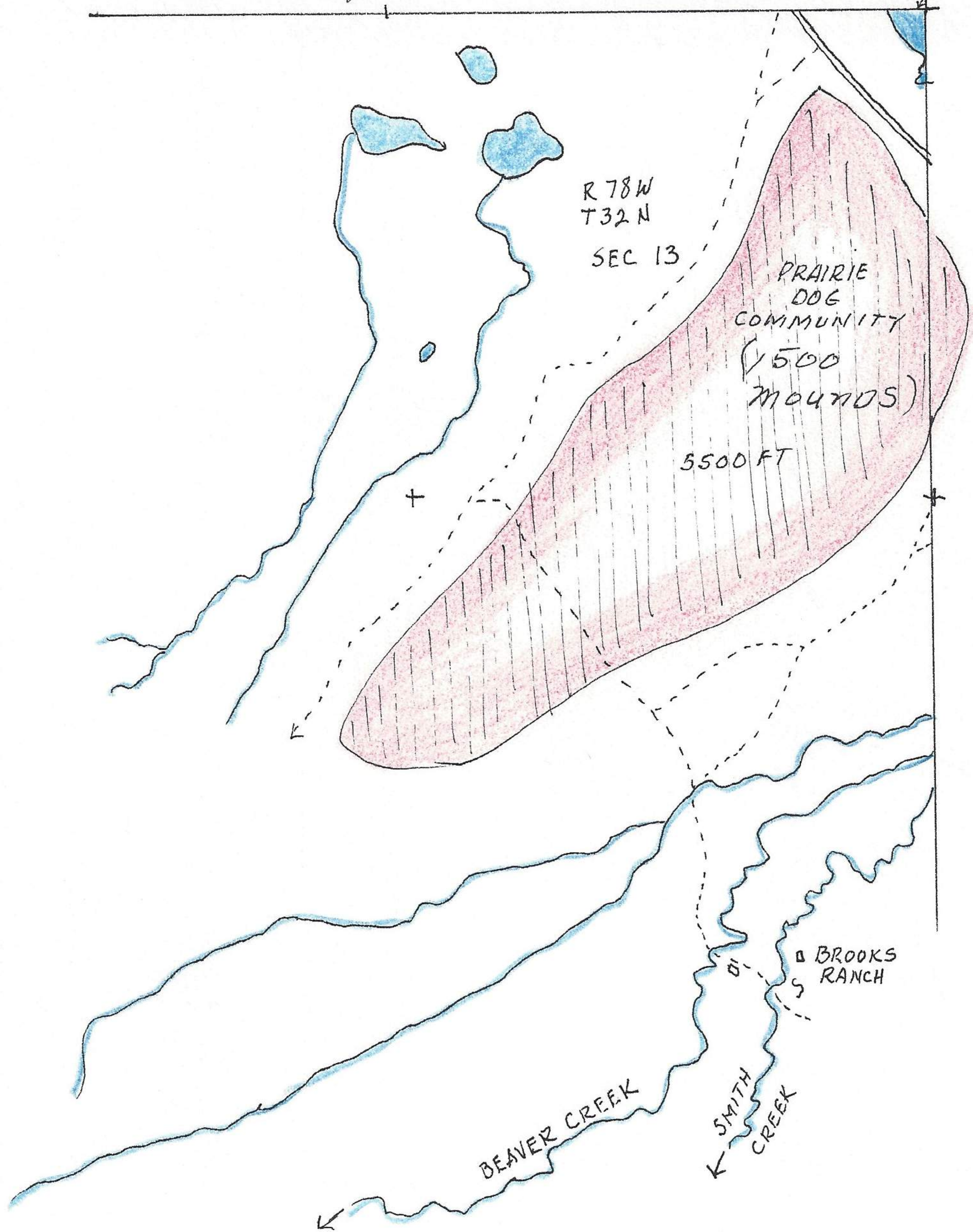


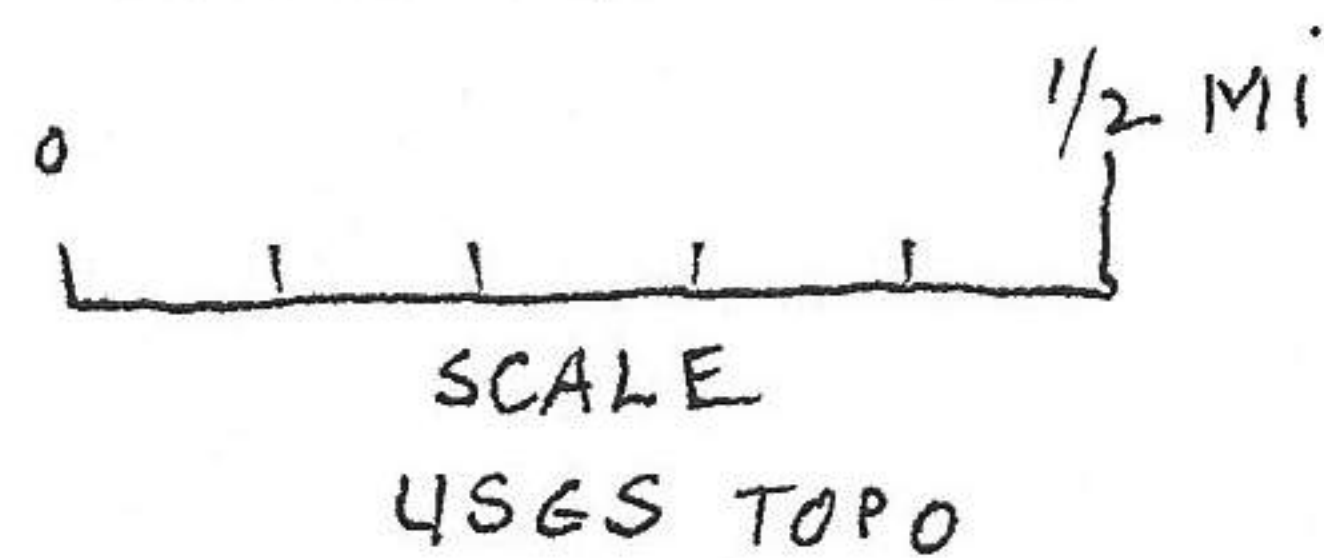
Beaver Creek, E end Casper mt., Natrona Co., Wyoming

Aug 13, 1980

McDONALD RES



PRAIRIE DOG COMMUNITY SW McDONALD RES., FIRST VALLEY W BEAVER CREEK
NATRONA CO. WYO.



made trip to Beaver Creek at point where canyon has developed w of the Hat Six hogback at E end of Casper mountain. Enroute counted 29 antelope in same alfalfa field where 17 were observed Aug 11, 1980. They were all confined to field and none observed beyond.