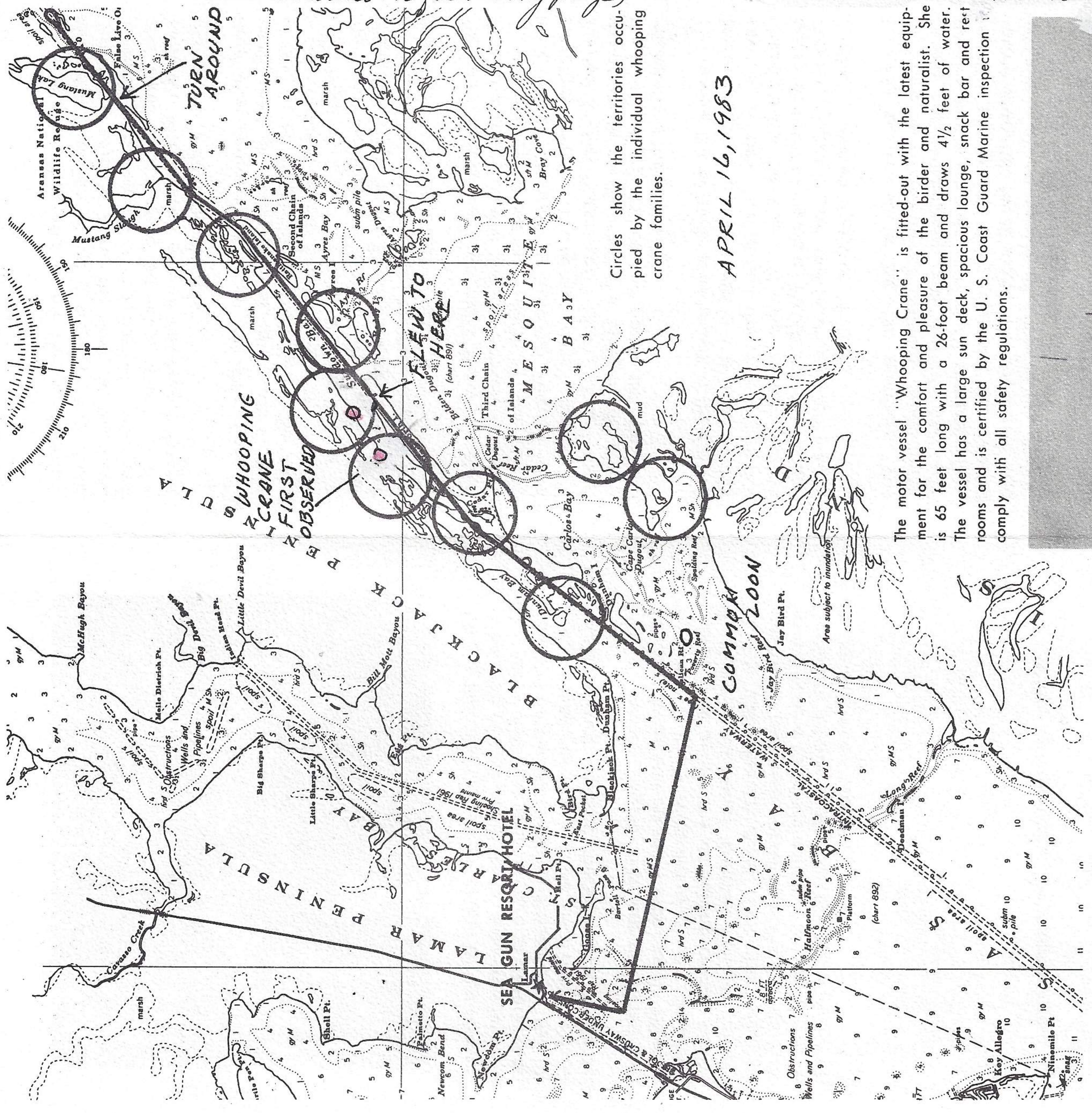


(see account on following page)

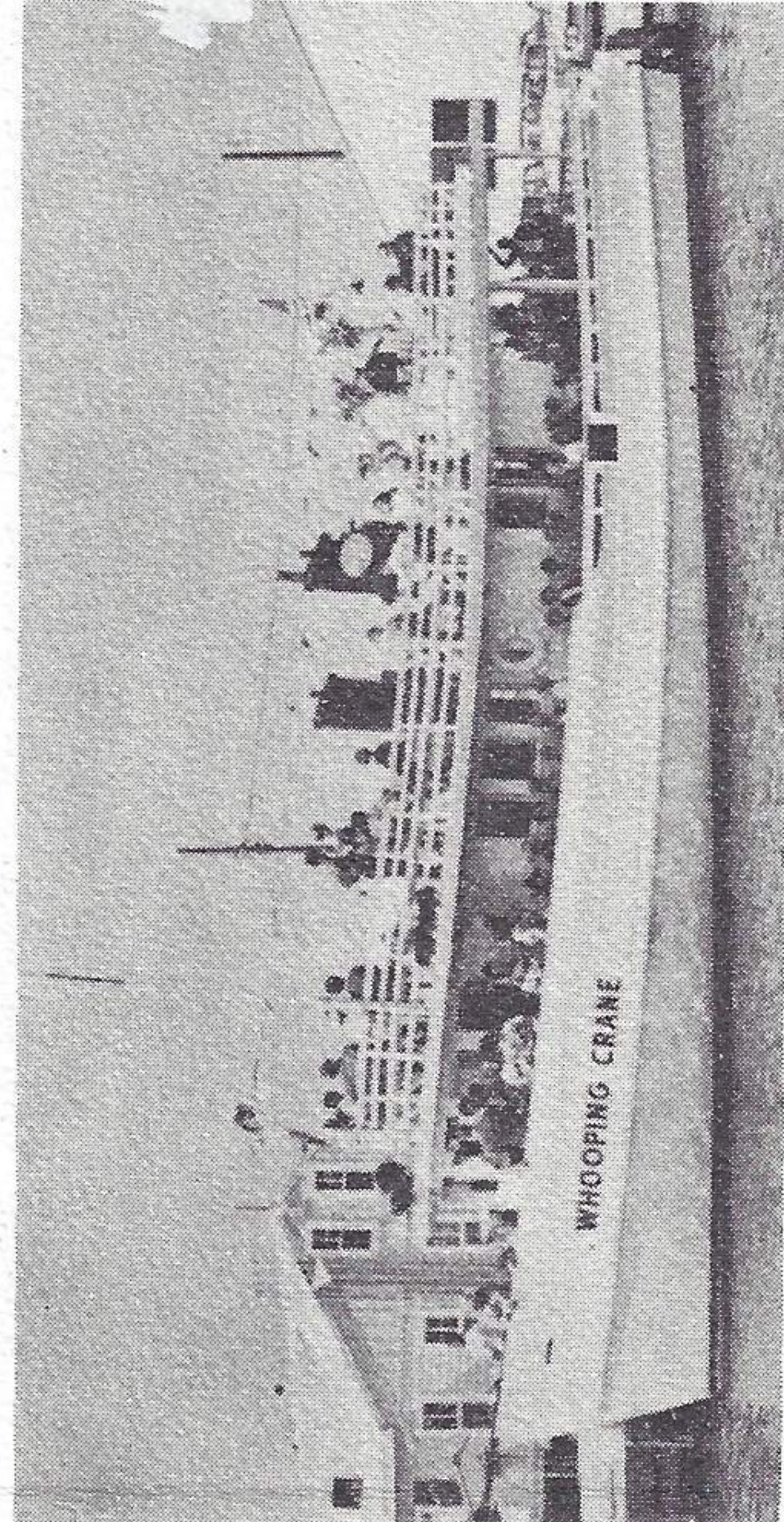
830417-78



Circles show the territories occupied by the individual whooping crane families.

APRIL 16, 1983

The motor vessel "Whooping Crane" is fitted-out with the latest equipment for the comfort and pleasure of the birder and naturalist. She is 65 feet long with a 26-foot beam and draws 4 1/2 feet of water. The vessel has a large sun deck, spacious lounge, snack bar and rest rooms and is certified by the U. S. Coast Guard Marine inspection comply with all safety regulations.



TOP—The colorful roseate spoonbill, whose population has diminished in recent years, is now increasing in numbers due to protective measures.

CENTER—One of the few remaining families of the brown pelican may be found on the tiny Second Chain islands in Ayres bay.

LOWER—Two adult whooping cranes fight over territory on the wintering ground. A young adult in the left foreground.

