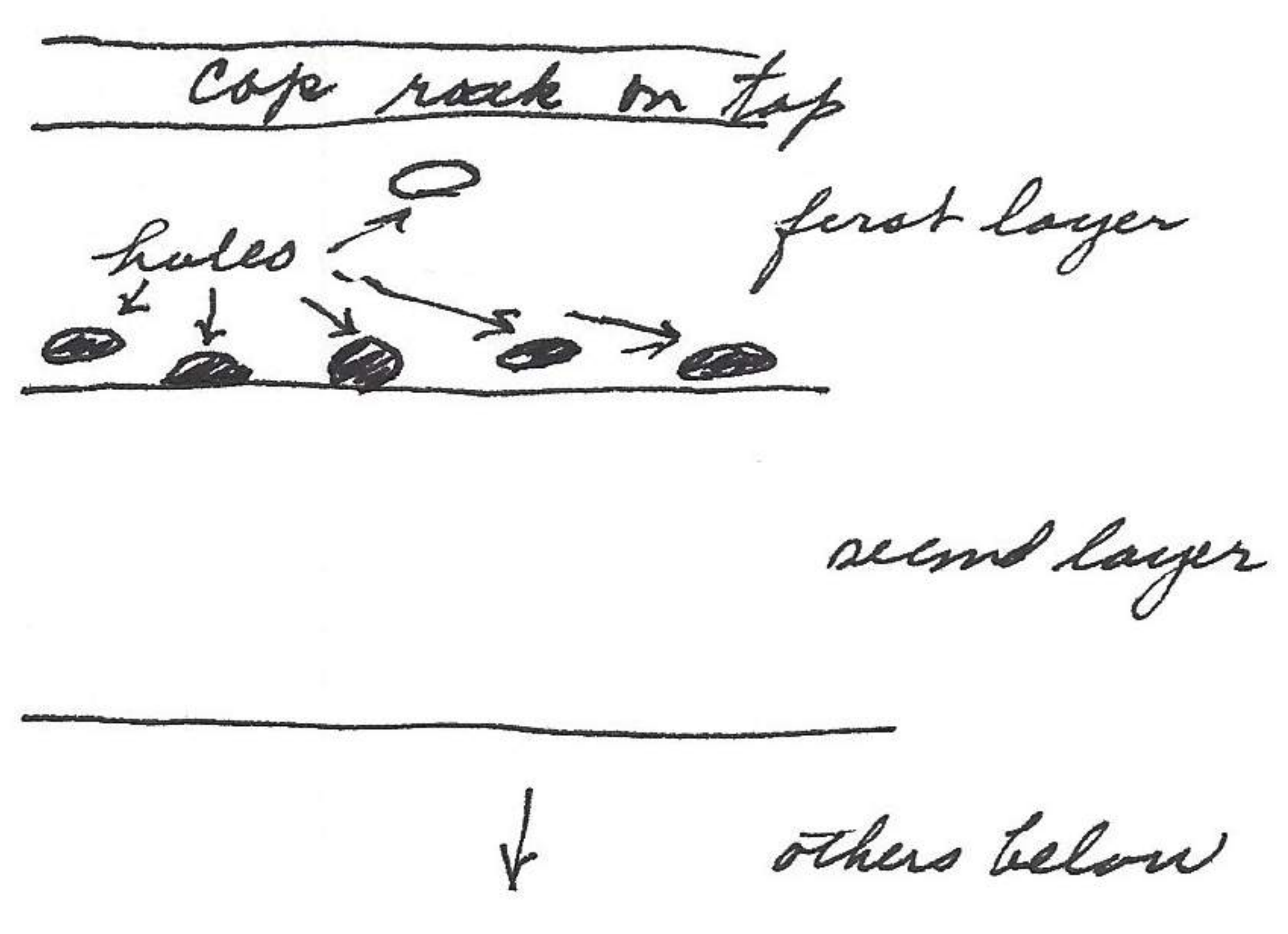


Prominent point to Cave 42
 Cave to fault 26
 fault to ^{Santa} Elena Canyon 45
 or 113 hole favorable for
 raven, prairie falcon, peregrine
 falcon.



holes only occasionally
 below upper layer of
 holes. These holes are
 where they are because
 of solution from top of
 cliff made before
 uplift as they continue
 up canyons.

Search in this area for
 1 hour with 17x binoculars
 revealed only 1 raven.
 There are not many white
 excrement signs on cliffs.
 with Rio Grande valley below
 would make good nesting
 sites for eagles, raven and
 both peregrine falcon and
 prairie falcon.

Next stop at site of 4 old dobbie houses used by early farmers in
 area. Jackrabbit and mockingbird here.

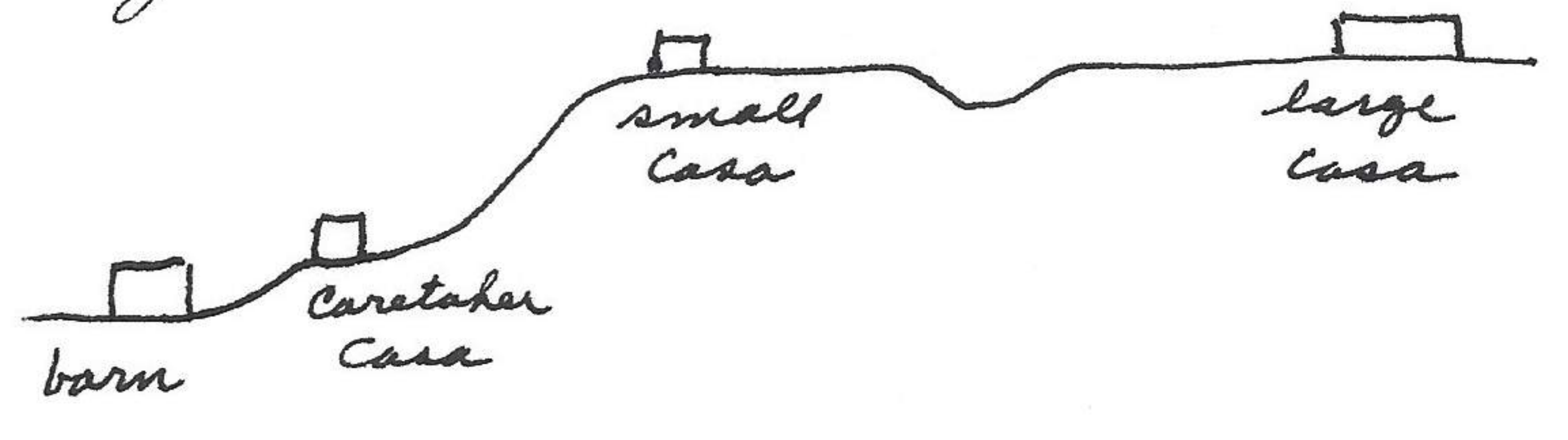
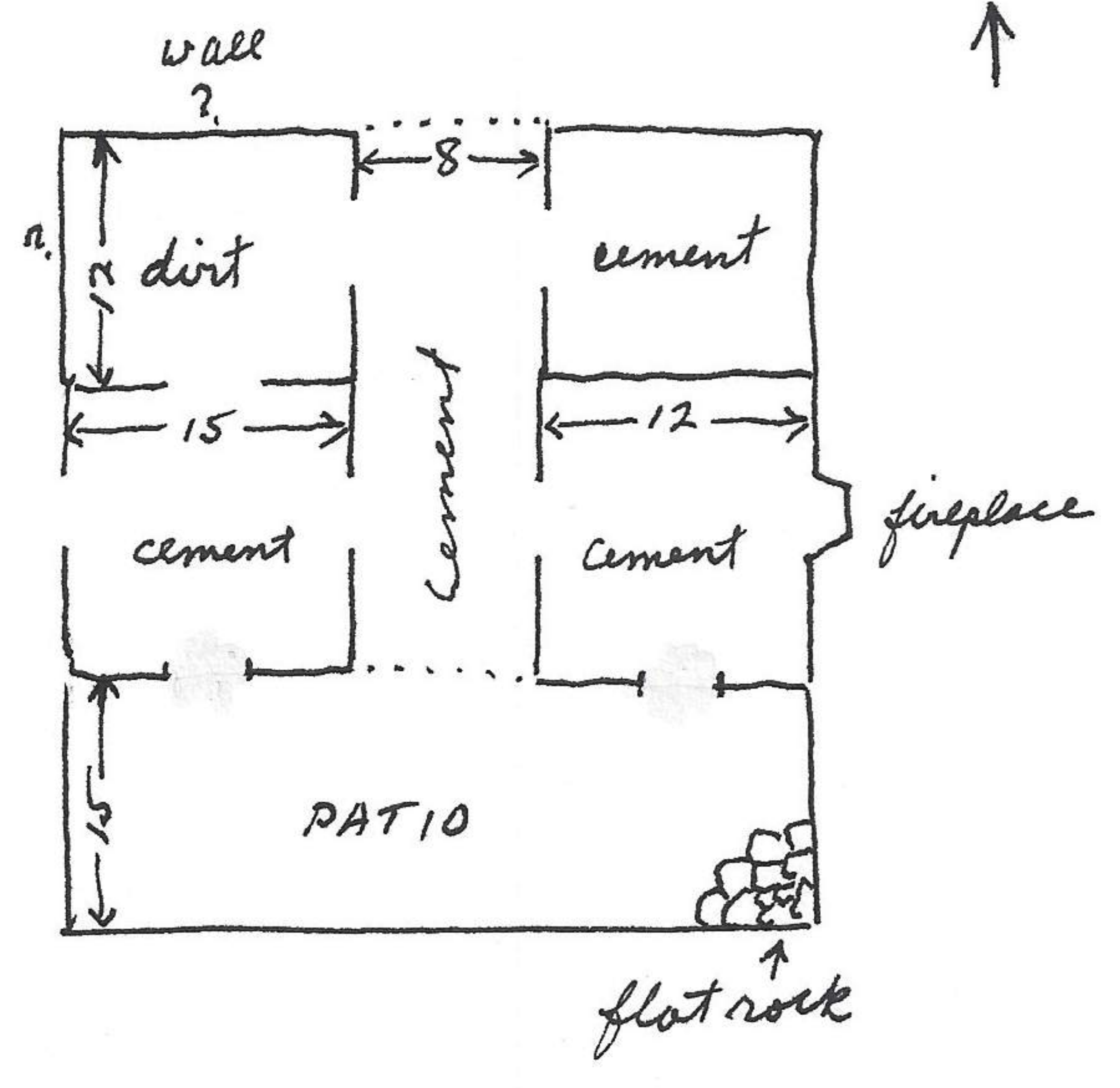


Photo 830525-1 of the small casa
 which has floor plan to left.
 Photo 830525-2 also of this house
 Photo 830525-3 front view of the
 large Casa to E. The two casas
 on benchland had commanding
 view to mt & valley to W & S and
 also to the N & E.