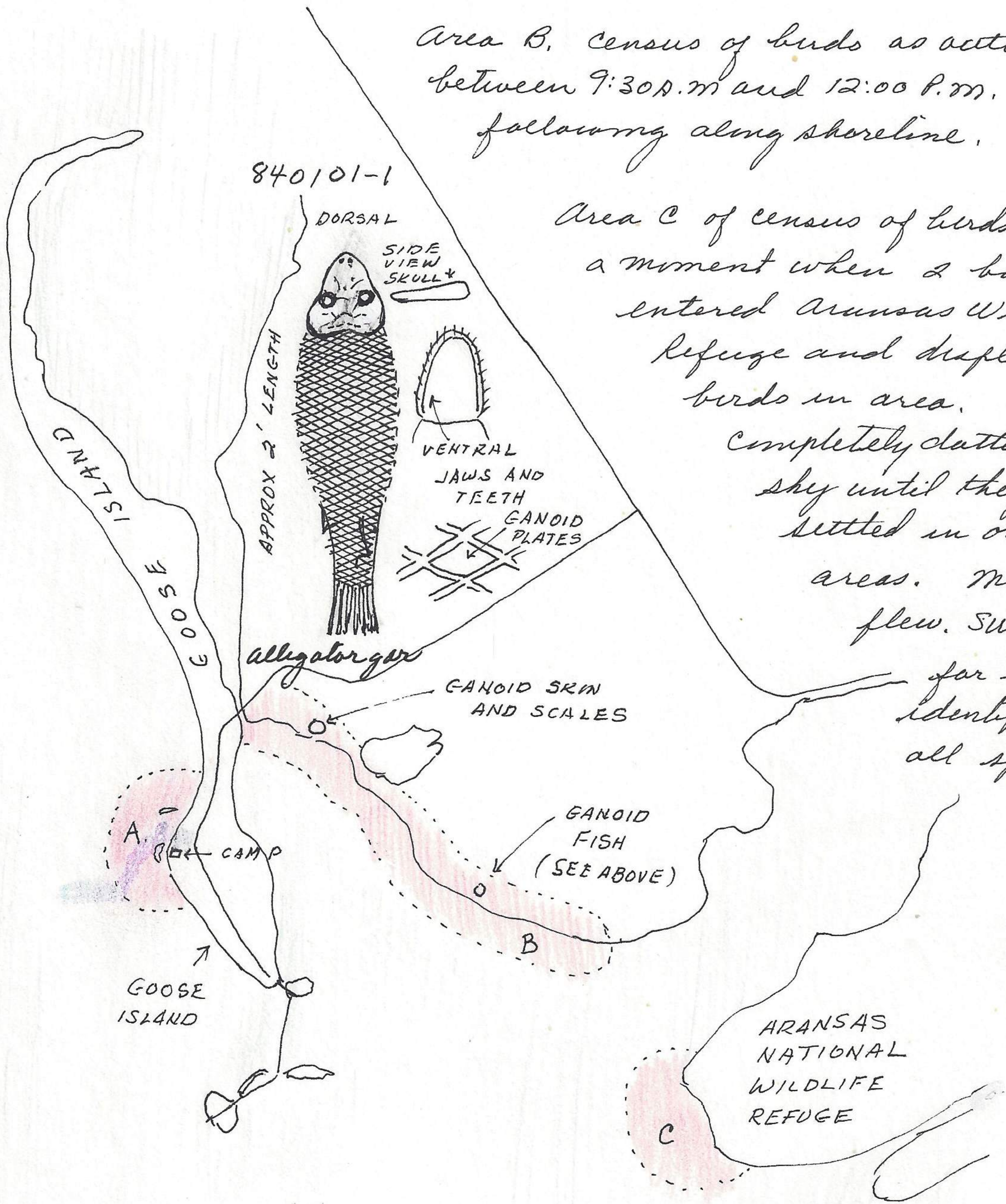


Research Area A. Census of all birds in area outlined at 9:00 A.M. (for a particular moment).

Area B. Census of birds as outlined between 9:30 A.M. and 12:00 P.M. (by following along shoreline).

Area C of census of birds at a moment when 2 boats entered Aransas Wildlife Refuge and displaced birds in area. They completely cluttered the sky until they resettled in other areas. Most flew SW. To far to identify all all species



at pier (first island) a turkey vulture sailed 8' over 9 killdeer, 3 long-billed dowitchers and 3 least sandpipers. The shorebirds immediately left with haste.

at last island on pier measured a raccoon hind foot in mud at 105 mm. On pier there were 7 droppings ^(normal amount) of the raccoon evenly spaces on pier. It must use pier to visit the islands for food.

Armadillo grubbing deeply thru dry sea grass on beach to get at food on beach level. It had effected approx 50' sq linear feet of ^{dry} grass.