

12:30 P.M. 18 glaucous-winged gulls feeding in 8' x 30' area, some diving into water. This occurs occasionally when only gulls are present. Most times they are associated with double-crested cormorants, rhinoceros auklets, marbled murrelets, common murre etc.

Oct 2, 1987

Mule deer active at feeder between 9:00-10:30 A.M. Wind from S and first cloudy day of continuous clear weather this summer.

Oct. 3, 1987

9:17 AM 7 river otter SW past Bee House (all previous reference to direction S of Bee House should be SW). They left water at Flat Point and spent 3 minutes in traditional grasses spat beyond the bare rocks. They returned to water and continued S around Lichen Point, keeping approx. 10' from shore.

871003-1 *Peromyscus m. hollisteri* 162-73-23-18-21gms ♂

From Bee House.

Oct. 4, 1987

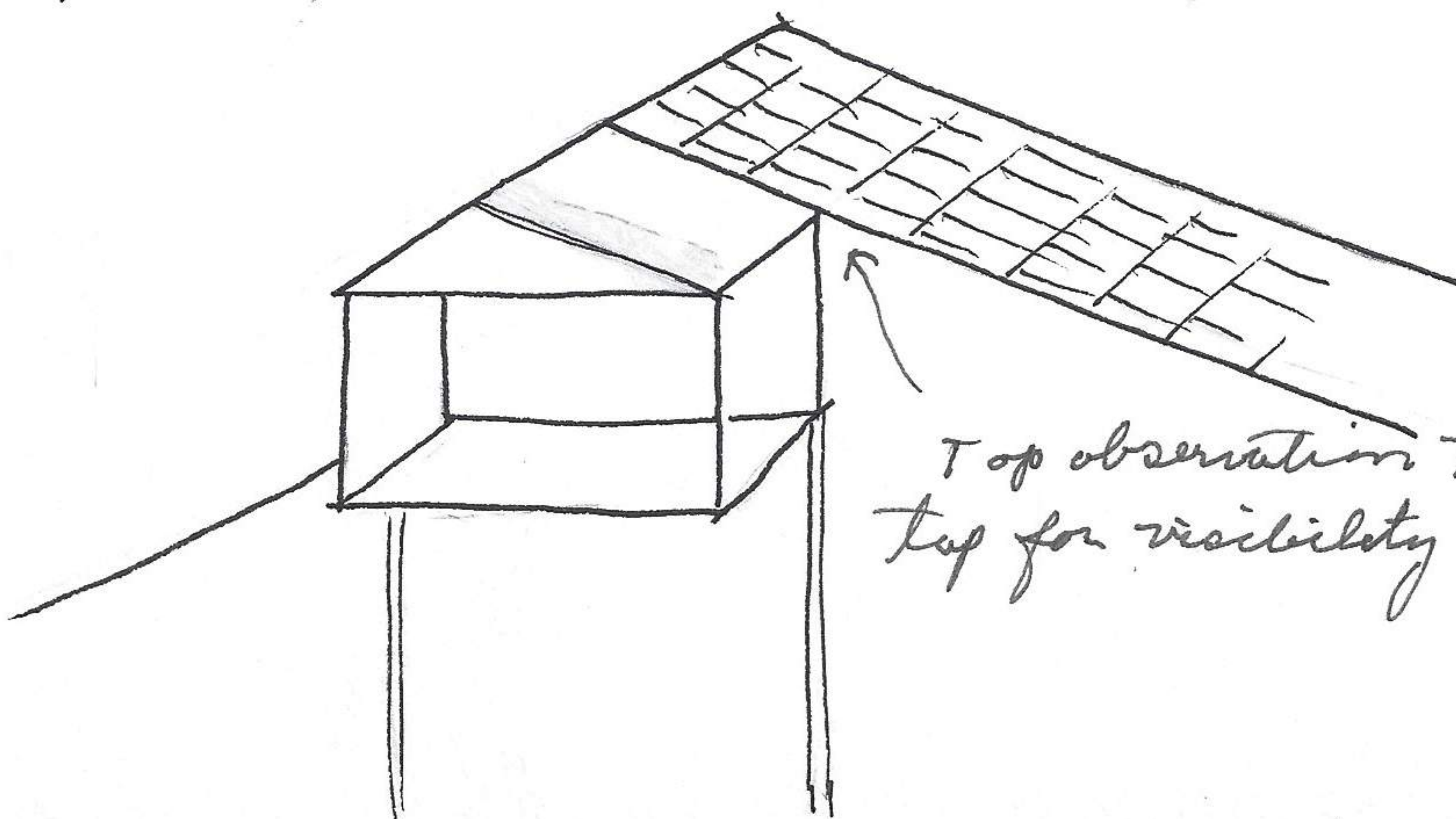
This AM at 9:20, noted 15 double-crested cormorant and 24 harbor seal on Leo Reef. 7 glaucous-winged gulls on Flower Is.

On Little Flower Rock were 9 harbor seal, 21 on Big Flower Rock. For 3-4 week and maybe longer, there has been a covering of beaches and on rocks of shoreline (intertidal zone) of a green lettuce-like plant.

10:10 A.M. 3 western grebes and 3 rhinoceros auklets in sound NW of Leo Reef. Both auklets and grebes were alone as a group of fishing birds.

A possible all glass observation post on SE end of Bee House,

Large enough for 2 people to observe and sleep.



Top observation house needs to be 2'-3' above roof top for visibility to N + W.