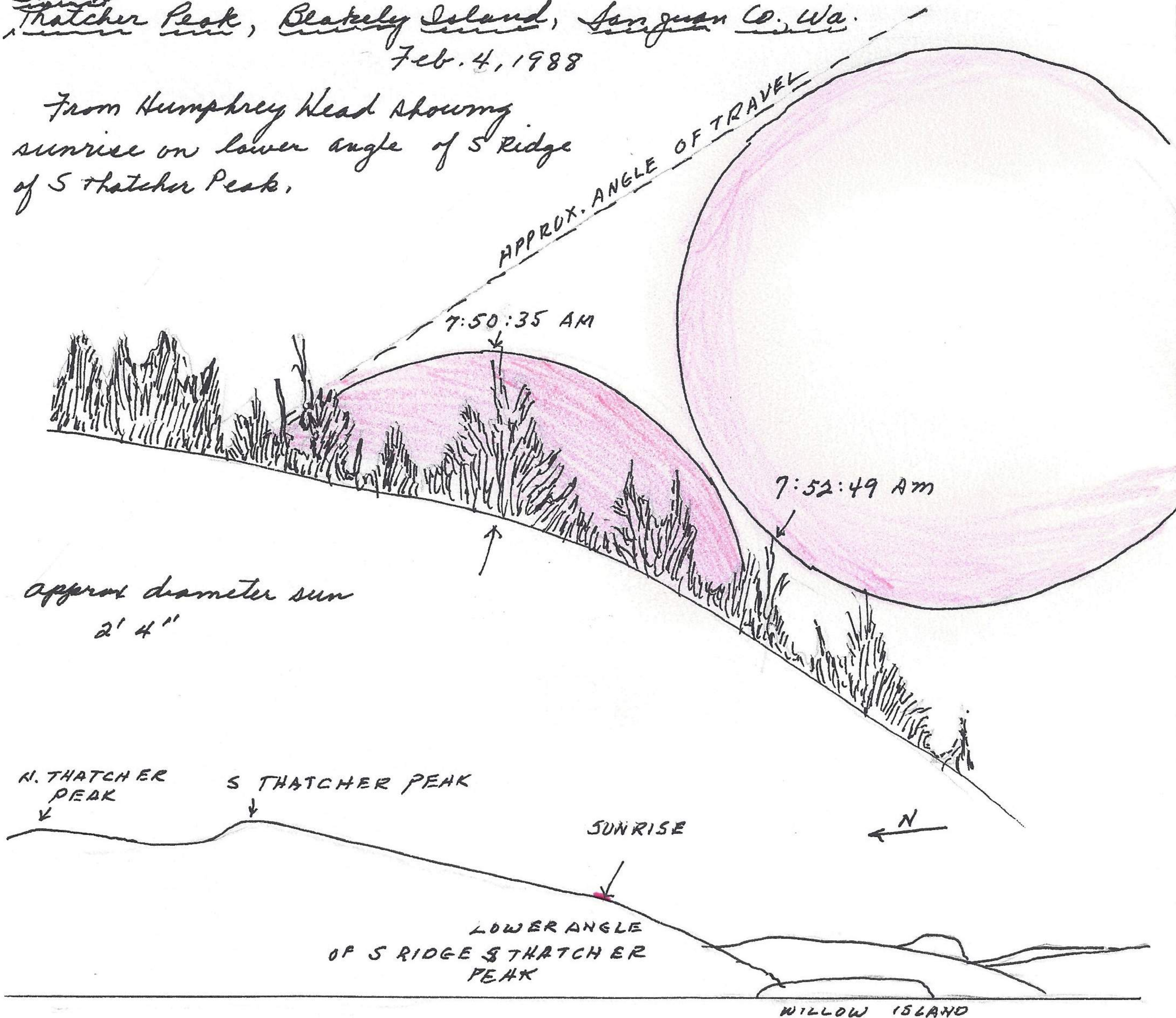


South Thatcher Peak, Blakely Island, San Juan Co. Wa.

Feb. 4, 1988

From Humphrey Head showing sunrise on lower angle of S Ridge of S Thatcher Peak.



approx diameter sun
2' 4"

N. THATCHER PEAK

S THATCHER PEAK

SUNRISE

LOWER ANGLE
OF S RIDGE S THATCHER
PEAK

WILLOW ISLAND

Bee Estate, Humphrey Head, Lopez Island, San Juan Co., Washington.

Feb. 5, 1988

880205-1 *Peromyscus m. hallisteri*. 165-76-23-19-18gms ♀
from Bee House last night.

11:20 A.M. a double-crested cormorant on shore 50 NE Bee House. Stood for 20 minutes with wings fully spread.

11:21 A.M. a ♀ hooded merganser swam along shore, 1-2 inches from land, passed a glaucous-winged gull which was standing 16 inches from water, and neither seemed to be disturbed as the merganser passed by.

11:25 A.M. a river otter swam from Lichen Point directly to Boundary Point in a broad by-pass of Spring Cove. At one time swam 100' without diving.