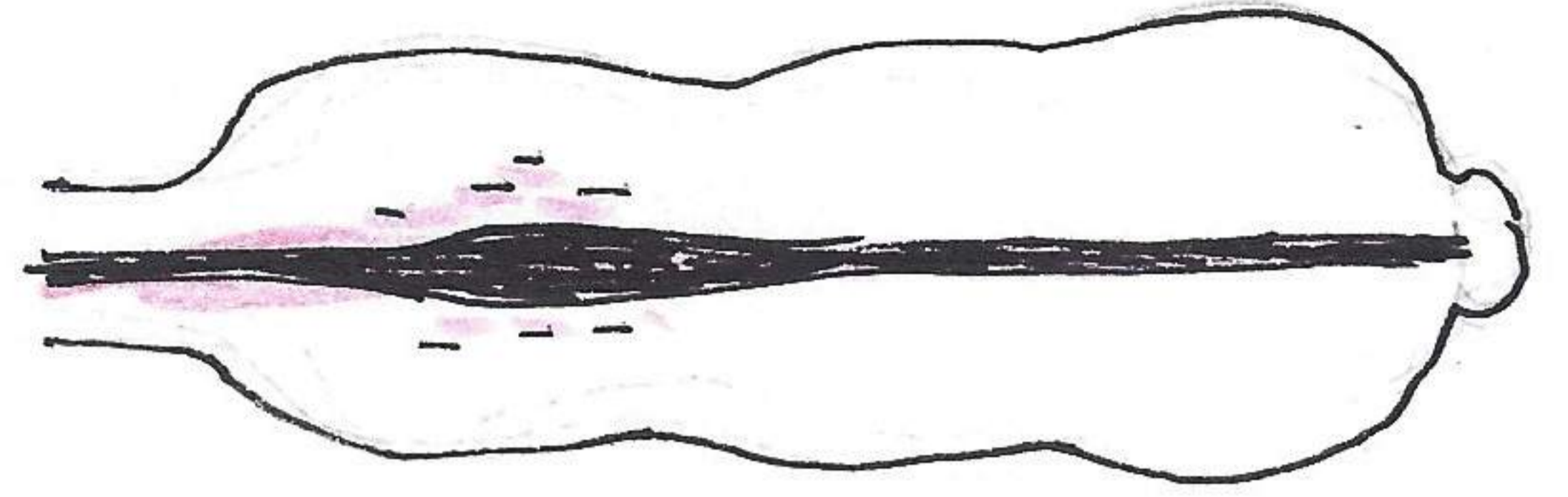
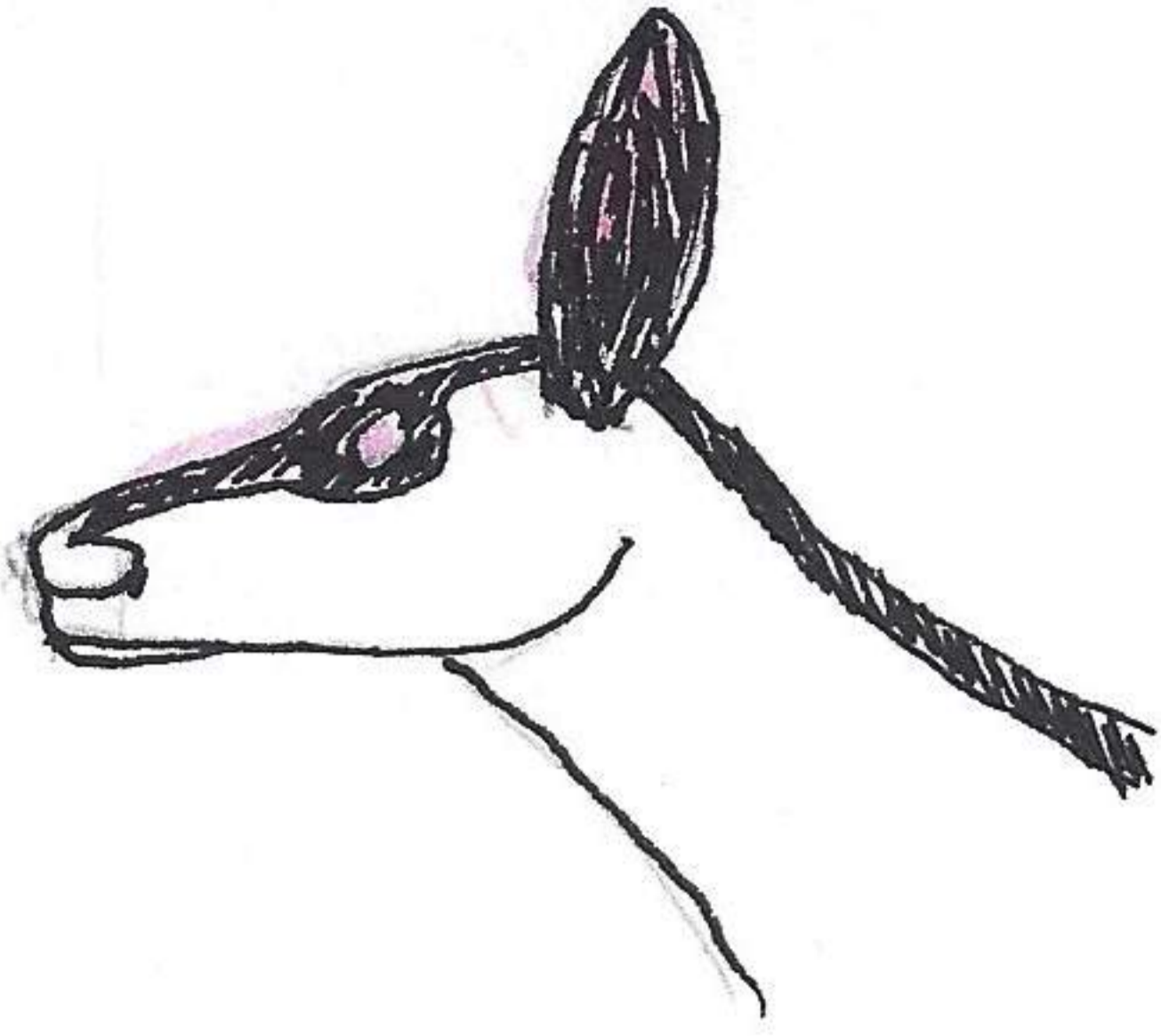


Sept 4, 1988

change of summer to winter pelage of
Buster, a ♀ mule deer. ^{and red} Black = winter
pelage, white = summer.

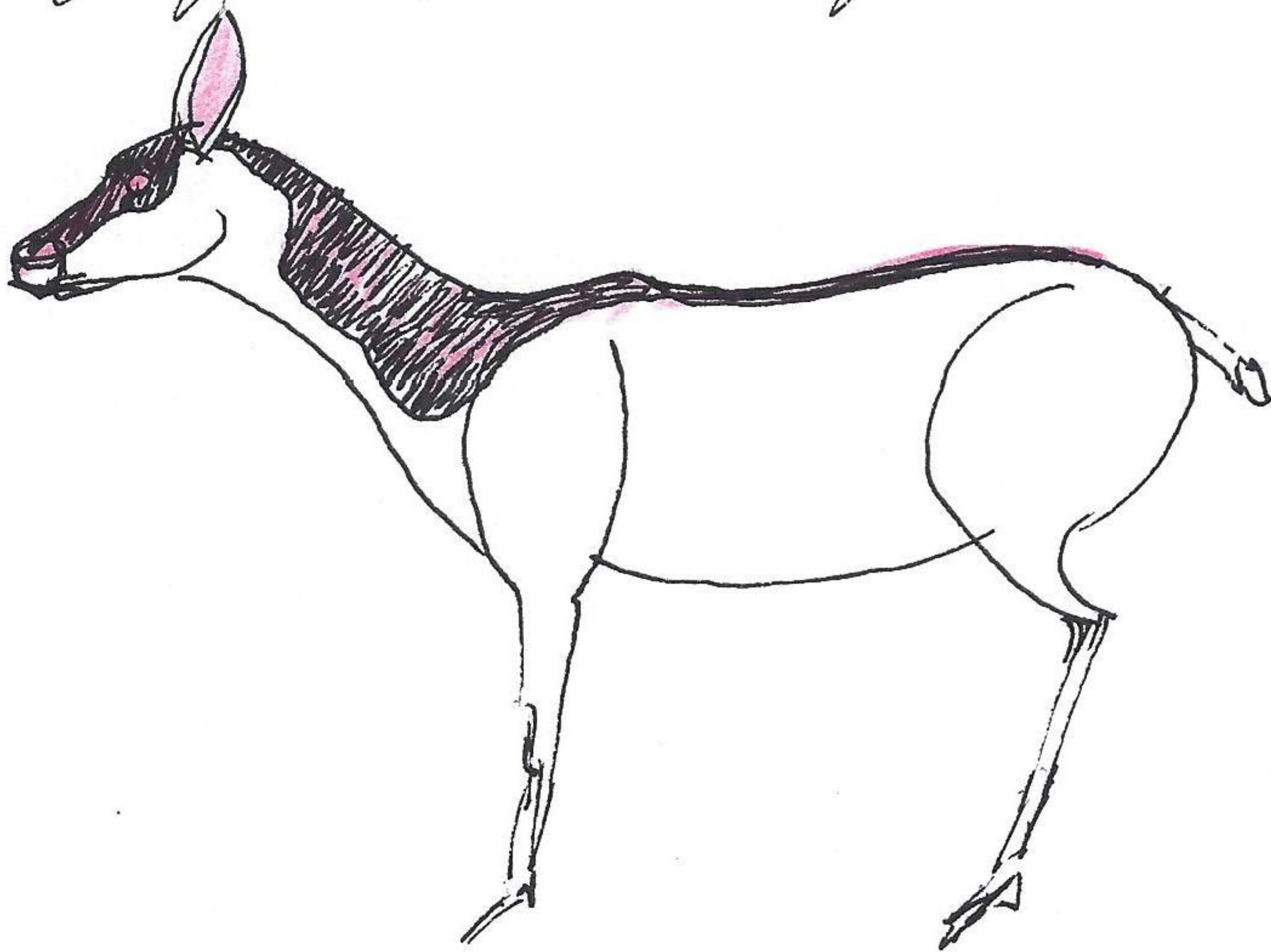


The change is from a colorful golden brown of summer to a rather dull grayish black of winter.

This mule deer, Buster, challenged another ♀ mule deer slightly smaller by thrashing head & neck from side to side at the direction of the other ♀, at times contacting the other deer and biting it. It charged the other ♀ at 3 feet, bit her again. The ♀ being pursued left and ran up slope. Buster took stance with hind legs extended backward & remained in this position with mouth partly open.

male deer with antlers freed of velvet. The antlers now are less than $\frac{1}{2}$ the diameter of the velvet vested antler. The sharp terminals are exposed.

A ♀ mule deer (at 29" height at shoulders) is in following stage of pelage change from summer to winter.



Sept 5, 1988

at 6:00 A.M. noted 5 bats flying back and forth in front of bedroom windows at Bee House, approx. 40 feet above water. Ordinarily one or two are observed. They continued to 6:11 A.M. and this took refuge in roof of house. As an individual