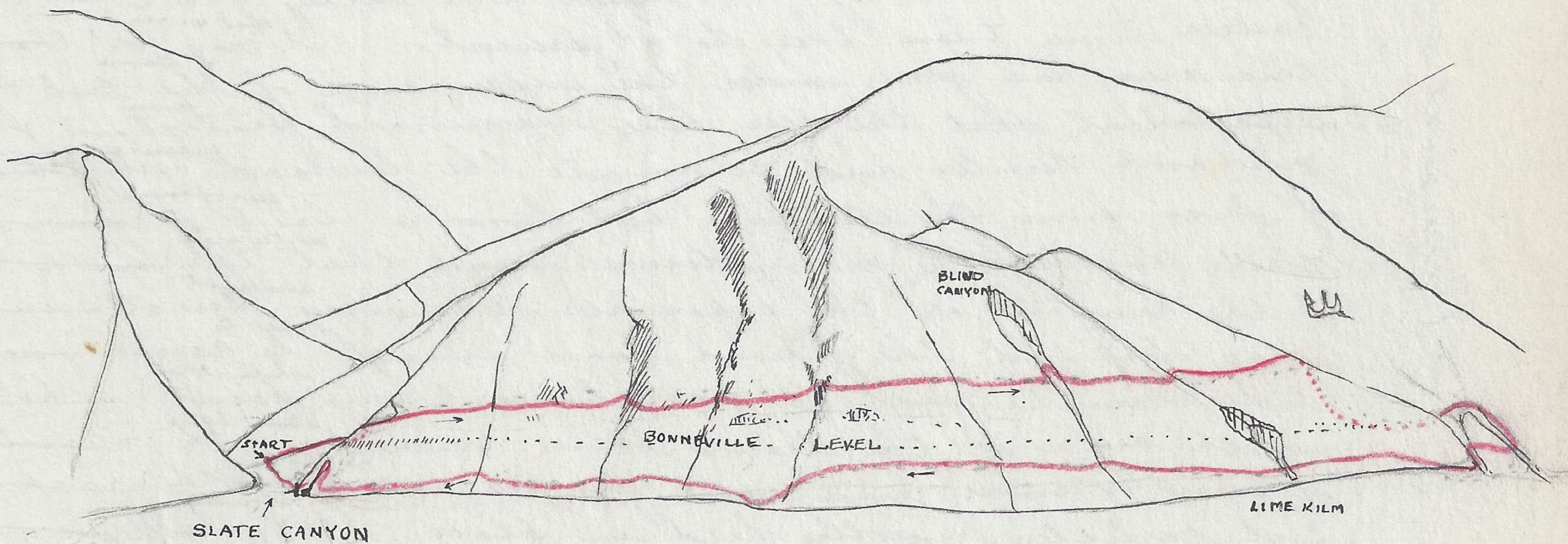


19.
20.
21.
22.
23.
24.
25.
26.
27.

After mounting selected few, culled others and now have them in boxes under the title of Preference sp. and the accompanying date referable to notes. Will be interesting to compare the relative numbers of samples from the different springs to be worked and particularly to find the factors play by the association or disassociation with Idaho River. All percentages and relative numbers are purely estimates and will naturally stand correction and wide range either side of recorded figure.

11/27/38 Spent 3 1/2 hours in field this afternoon on mountain side from mouth of Slate Canyon, south to canyon above County Infirmary. Followed on a nearly horizontal plane about 300 feet above the upper level of the Bonneville Terrace. Along this route one intercepts many small canyons and numerous rock outcroppings, some possessing the propensities of cliffs or at least ledges. Left home



and drove to the mouth of Slate Canyon and left car just above the erosional dam about 2 blocks up canyon. Before leaving to the south examined the immediate area but failed to find any evidence of mammal activity. Leaving bottom of canyon work up graded trail on south side of canyon. The trail supported snow about 3" deep and ground frozen solid. About 70% of the surface of side hill is covered with snow. The bottom of canyon and north side is entirely free from any snow. Even at this time of year this trail is used as a highway for deer as evidenced by the solid and perfect casts of their hoofs. Would estimate that possibly six deer had passed along here very