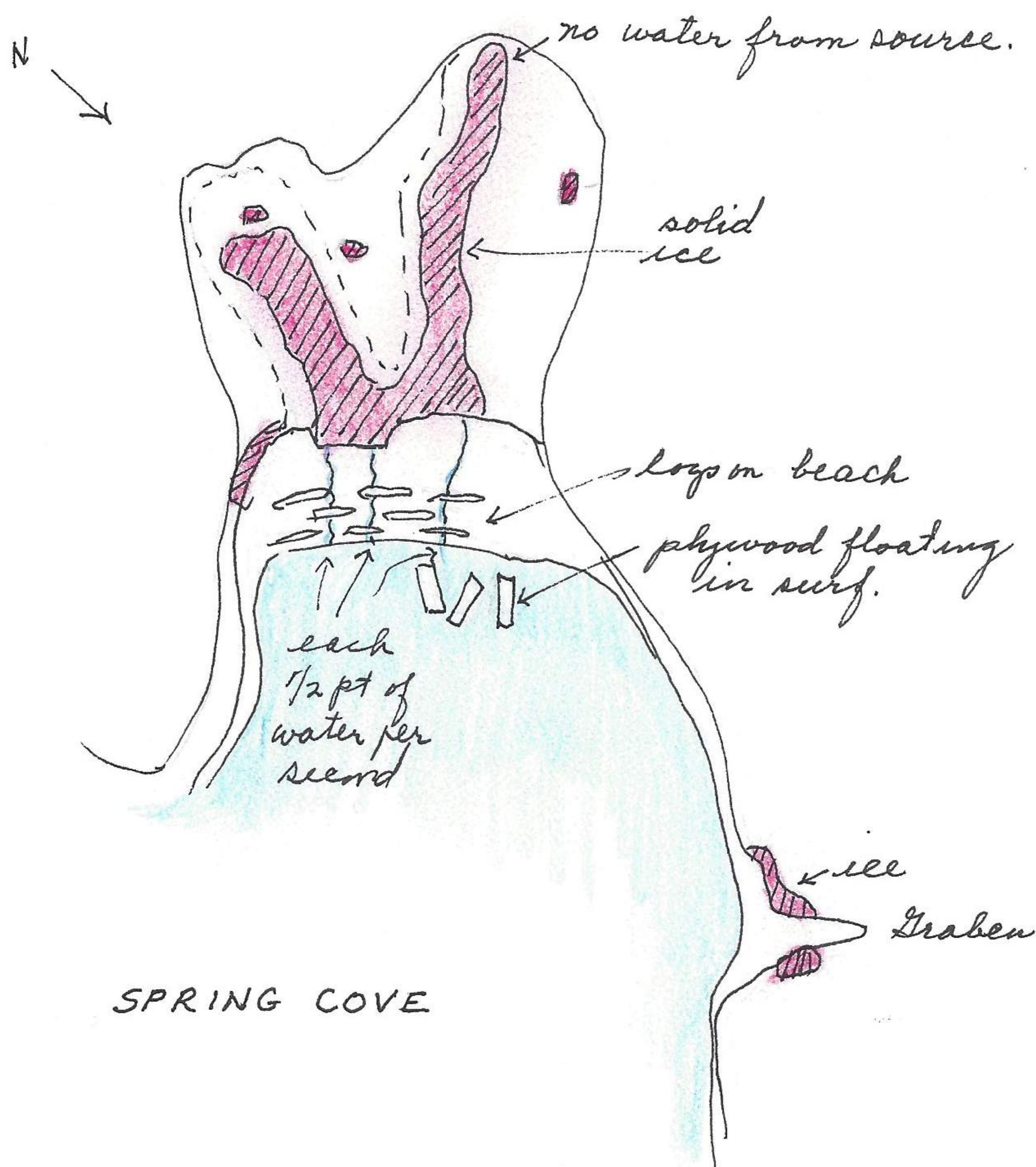


grass and sedges along water, 26 mallards, 18 American widgeon, 2 European widgeon, 9 Canada geese, 9 pintails, in water, 6 gadwalls, 78 bufflehead ducks, 37 greater scaup ducks, 3 common goldeneyes, 9 glaucous-winged gull. Hummel Lake completely frozen, no birds. Beach and water 5 Swift Bay 58 buffleheads, 21 American widgeon, 17 sanderling, 4 western sandpipers, 21 mew gulls, 15 glaucous-winged gulls, 15 glaucous-winged gulls, 6 surf scoters, 3 common goldeneyes, 13 greater scaup ducks, 2 cormorants, the western sandpipers were feeding among the American mergansers. Photo 901221-1 of both mew and glaucous-winged gull searching surf as debris is brought in from the bay.

Photo 901221-2 The 'Bee' boat at Shoal Bay marina, note ice on dock on N end, several inches of ice had accumulated on aft boat and aft dingy.

Returned home 12:40 P.M.



Dec 22, 1990

Fog, temp 18°F outside, 56°F inside. Snow last night covering all surfaces and shoreline to 3/8 inches. Birds at feeder: 3 purple finch, 3 varied thrushes, 27 dark-eyed junco, 6 American