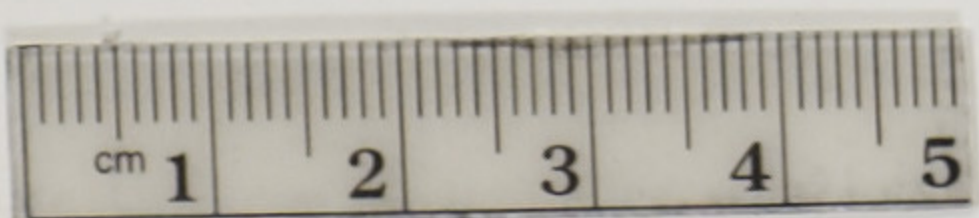




TRICHOPARADISEA GULIELMI (Cab.)

W. Hart del. et lith.

Mintern Bros. imp.



TRIC

Paradisea gulielmi,
Paradisea gulielmi t.
 (1890).—
Trichoparadisea guli
 Orn. Clu

This fine species of
 discovered in Germa

The exact localit
 the north of Huon
 Mr. Fenichel in the
 'Chanbi.' Captain
 in the Finisterre ra
 fine pair of birds to

Adult male. Gener
 of the hinder neck, t
 of the wing-coverts,
 represented by long
 of the face and entir
 straw-colour, extend
 remainder of under
 with a pale yellowish
 dissociated webs, so
 long plumes being
 feet reddish brown
 tail 4.4, centre tail-fe

Adult female. Sim
 the crown and throa
 hinder crown being t
 yellow on the breas
 greenish-grey colour
 from the chest dow
 as the breast. Total

A younger female,
 bird described, espec
 indistinct mottlings
 of the sides of the ne

The three specime
 male and female have