

372  
R. H. Gould

Brachyura

from the Alaska - Islands  
Alaska - Islands

Two groups of Islands  
near Alaska Islands  
also Indian Archipelago

Total length, of adult male 3 - 4 -  
Bill 1 1/2  
Tarsus 1 1/2  
Toes 1 1/2  
Tail 4  
5  
7



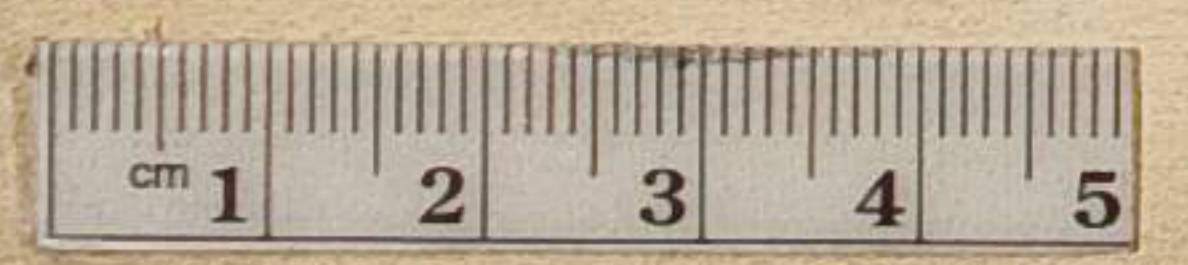
Bill as in Alaska  
but more lobed  
The Culmen is not so long  
as in the Alaska

all the plumage white  
The neck slightly washed with pale yellow  
and the primary and secondary  
feathers tipped with green  
The scapular feathers of the  
scapular also are like the primary  
a white space exists however  
between the scapular and the primary

tail tipped with blackish brown  
lump white



Young birds similar to adults  
also to Alaska Islands  
except that it is not so long  
as in the Alaska



like *Lophomydas* albatus or  
Berle's

? *fuscus* -

more slender bill

than *brachyura*

legs slender

than *brachyura*



marked down  
on the ticket  
sent to the Berlin Museum  
from Brandt St. Petersburg  
was collected by Kullback for  
Nestor's party among is

Stal leg - 2 1/2  
Ceph & Bill 4 5/8  
Wing - 21  
Tarsus - 3 1/2

All to plume slender black  
Wings head & neck the darkest  
Must darker than the one in field  
Tail very short square & black

Remarks Mrs May probably  
is a  
rather a young bird  
that is in the  
Dumet's *Shadwin* March 1820  
*Albatrus de la Chine*  
? See what Mrs May is  
Buff 969

