

Price £1 15s.

ICONES AVIUM,

OR

FIGURES AND DESCRIPTIONS

OF

NEW AND INTERESTING SPECIES OF BIRDS

FROM VARIOUS PARTS OF THE WORLD.

BY

JOHN GOULD, F.L.S., &c.

FORMING

A SUPPLEMENT

TO HIS PREVIOUS WORKS.

PART II.

MONOGRAPH OF THE CAPRIMULGID π ,

PART I.

Amblypterus anomalus.
Nyctidromus Derbyanus.
Semeiophorus (Macrodipteryx?) vexillarius.
Lyncornis cerviniceps.

Lyncornis macrotis.
——— Temminckii.
Batrachostomus auritus.
Nyctibius pectoralis.

LONDON:

PRINTED BY RICHARD AND JOHN E. TAYLOR, RED LION COURT, FLEET STREET.
PUBLISHED BY THE AUTHOR, 20, BROAD STREET, GOLDEN SQUARE.

AUGUST, 1838.

Ellis
Aves
H106
p. 2

Ellis
Aves
H106
p. 2

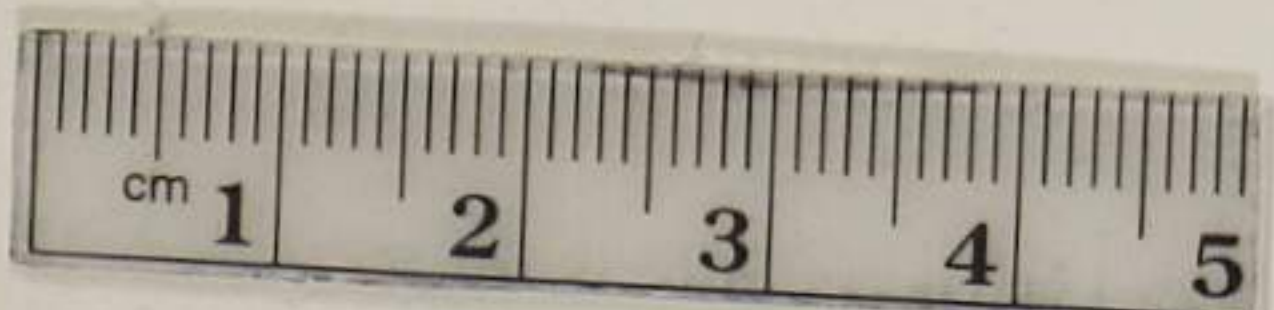




AMBLYPTERUS ANOMALUS; (Gould).

Painted by C. B. Townsend.

Engraved from the original by J. E. Gould.



Genus **AMBLYPTERUS**, *Gould.*

CHARACTERES GENERICI.

Rostrum debile et elongatum. Nares elevatae et rotundatae. Rictus setis robustis instructus, rostro longioribus. Alae truncatae; remigibus externis sextis ferè aequalibus et falcatis; remigibus secundo, tertio, quarto ad externum pogonium emarginatis, septimo, octavo, nono ad apices elongatis et attenuatis, decimo abruptè brevi; secundariis brevissimis, rotundatis, tertiariisque elongatis, conditis. Cauda brevissima et quadrata. Pedes ambulatorii. Tarsi elongati, graciles, squamis indistinctis anticè et posticè fasciati; digito intermedio longissimo et gracillimo; digitis lateralibus brevibus et aequalibus; digito postico parvo, debili et libero; unguibus elongatis, ungue medio pectinato.

AMBLYPTERUS ANOMALUS, *Gould.*

Amb. summo capite, corpore suprà, et alis cinereo-fuscis, singulis plumis nigro irregularitèr sparsis et maculatis; primariis nigris, ad bases rubrescenti-cervinis, ad apices albis; secundariis cervinis, nigrescenti-fusco irregularitèr fasciatis; rectricibus caudæ cervinis, nigrescenti-fusco irregularitèr fasciatis et maculatis; duabus centralibus cinereo-fuscis; gutture, pectore, et abdomine ad partem superiorem nigrescenti-fuscis, singulis plumis cervino maculatis; abdomine imo pallidè cervino, singulis plumis nigrescenti-fusco transversim fasciatis; rostro fusco; pedibus pallidè fuscis.

Long. tot. $6\frac{3}{4}$ unc.; rostri, 1; alæ, $5\frac{3}{4}$; caudæ, 3; tarsi, $\frac{7}{8}$.

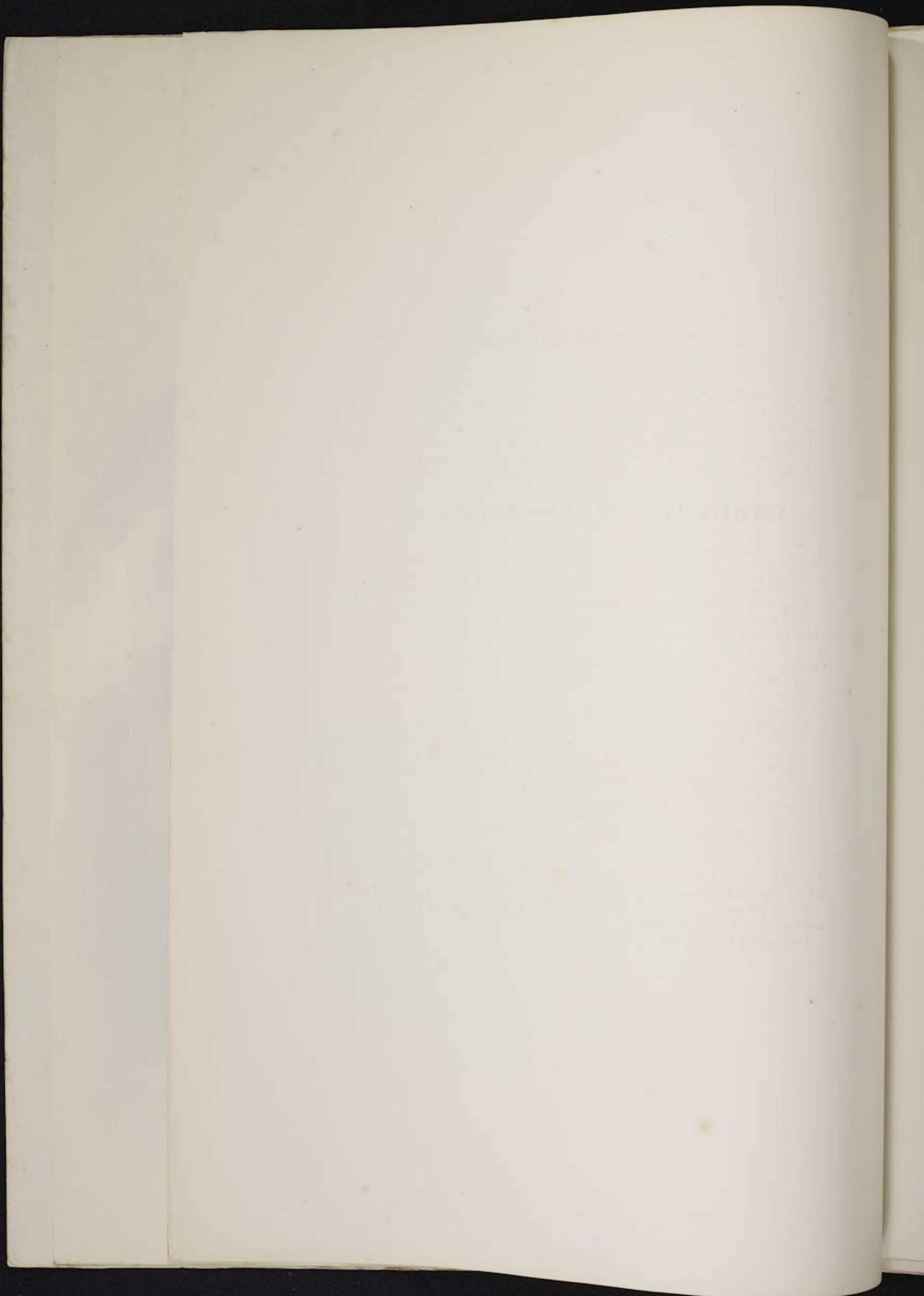
A pale fawn-coloured stripe from the nostrils over each eye; crown of the head, back, and wings greyish brown; the centre of each feather irregularly dashed and spotted with black; primaries black, with the basal portion reddish fawn colour, and the tips white; secondaries fawn colour, irregularly barred with blackish brown, the tips being paler; two centre tail-feathers greyish brown, irregularly barred and speckled with blackish brown; the remainder of the feathers fawn colour, irregularly barred with blackish brown, and speckled on the intermediate spaces with the same colour, the whole largely tipped with light fawn; throat, chest, and upper part of the abdomen blackish brown, each feather on the chest having a longitudinal stripe of fawn down the centre, the whole minutely speckled with fawn; lower part of the abdomen light fawn colour, each feather transversely barred with blackish brown; bill brown; feet light brown.

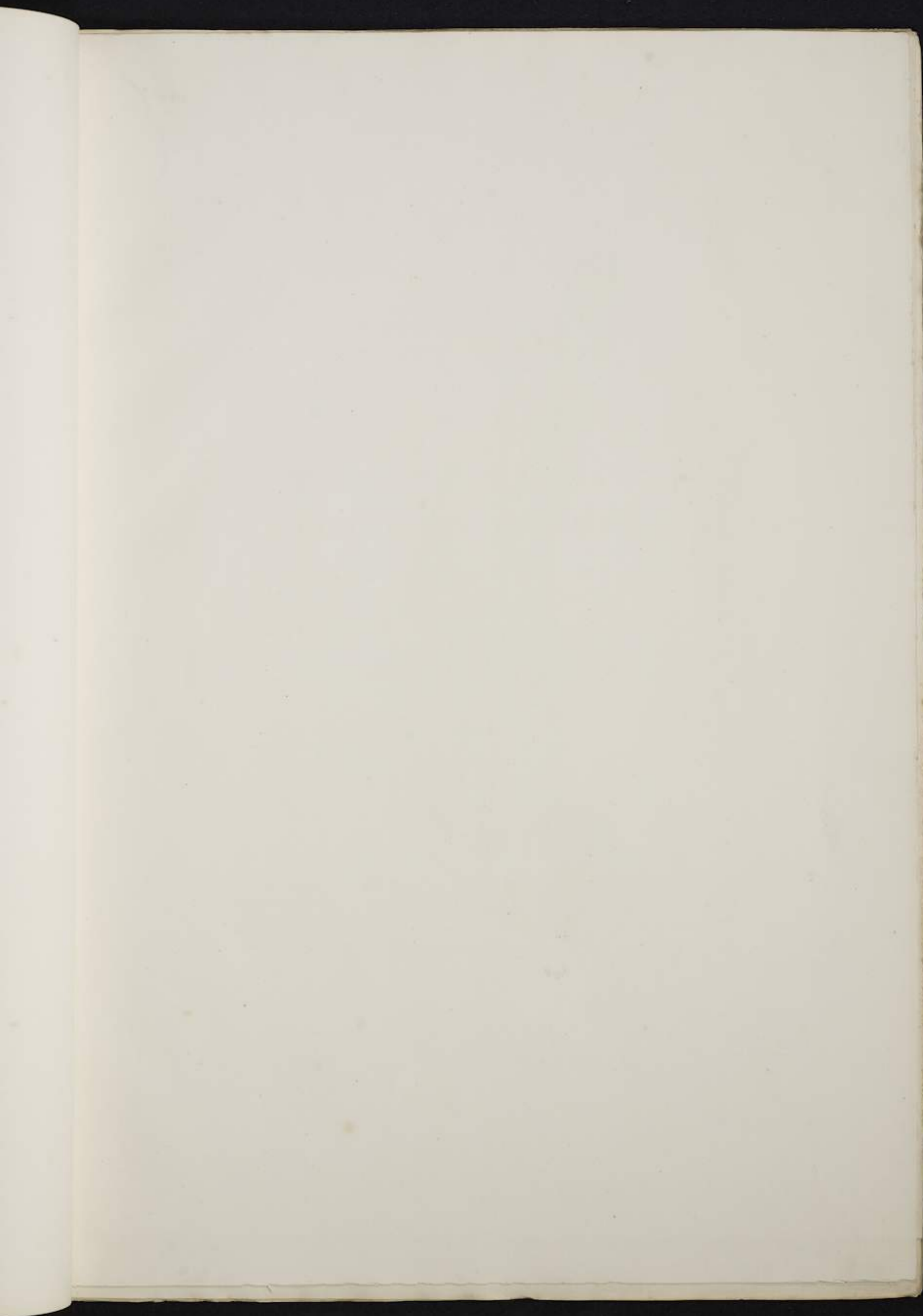
Amblypterus anomalus, Gould, in Proc. of Zool. Soc. Part V. 1837, p. 105.

A SINGLE specimen of this truly anomalous Goat-sucker forms part of the collection of the British Museum; it is the only one I have ever seen, and is, I believe, entirely new to science.

The only information I have been able to obtain respecting it is, that Mr. J. E. Gray purchased the specimen above mentioned from a collection of skins at Liverpool, which were said to be from Demerara.

The figure is of the natural size.







NYCTIDROMUS DERBYANUS, (Gould.)



Genus NYCTIDROMUS, Gould.

CHARACTERES GENERICI.

Rostrum mediocre, ad basin latissimum, hiatu amplissimo, rictu setis elongatis instructo. Nares sub-basales, elevatae, transversim subovales, apertae. Alae mediocres, remige tertio caeteris praestante. Cauda elongata, ampla, subrotundata. Tarsi nudi, elongati, anticè scutellati. Digitorum externus et internus breves, intermedius elongatus, ungue pectinato; digitus posticus liber, parvus, et ungue parvulo instructus.

NYCTIDROMUS DERBYANUS, Gould.

Nyct. fronte, vertice, nuchâ, et regione interscapulari cinerescens, minutissimè nigro punctatis; vertice et nuchâ lineâ irregulari nigrâ ornatis; genis, plumis auricularibus, mentoque rufo-fuscis, hâc obscure nigro fasciato, lineâ cervinâ ab angulo oris; alæ tectricibus rufo, cervino, nigroque ornatis; primariis ad basin nigrescentibus, rufo fasciatis, in medio albis, ad apicem nigrescenti-fuscis; secundariis rufo fuscoque fasciatis; scapularibus rufis, nigrescenti punctatis et lineatis necnon cervino-marginatis; dorso imo, rectricibusque caudæ duabus intermediis sordidè cervinis, nigro punctatis, et obscure fasciatis; rectrice externâ utrinque nigrâ, intus albo marginatâ; reliquis albis; corpore subtus cervino, fusco fasciato; pectore superiore plagâ albâ semidivisâ ornato; rostro pedibusque brunneis.

Long. tot. 12 unc.; rostri, $1\frac{3}{8}$; alæ, 7; caudæ, 7; tarsi, $1\frac{1}{8}$.

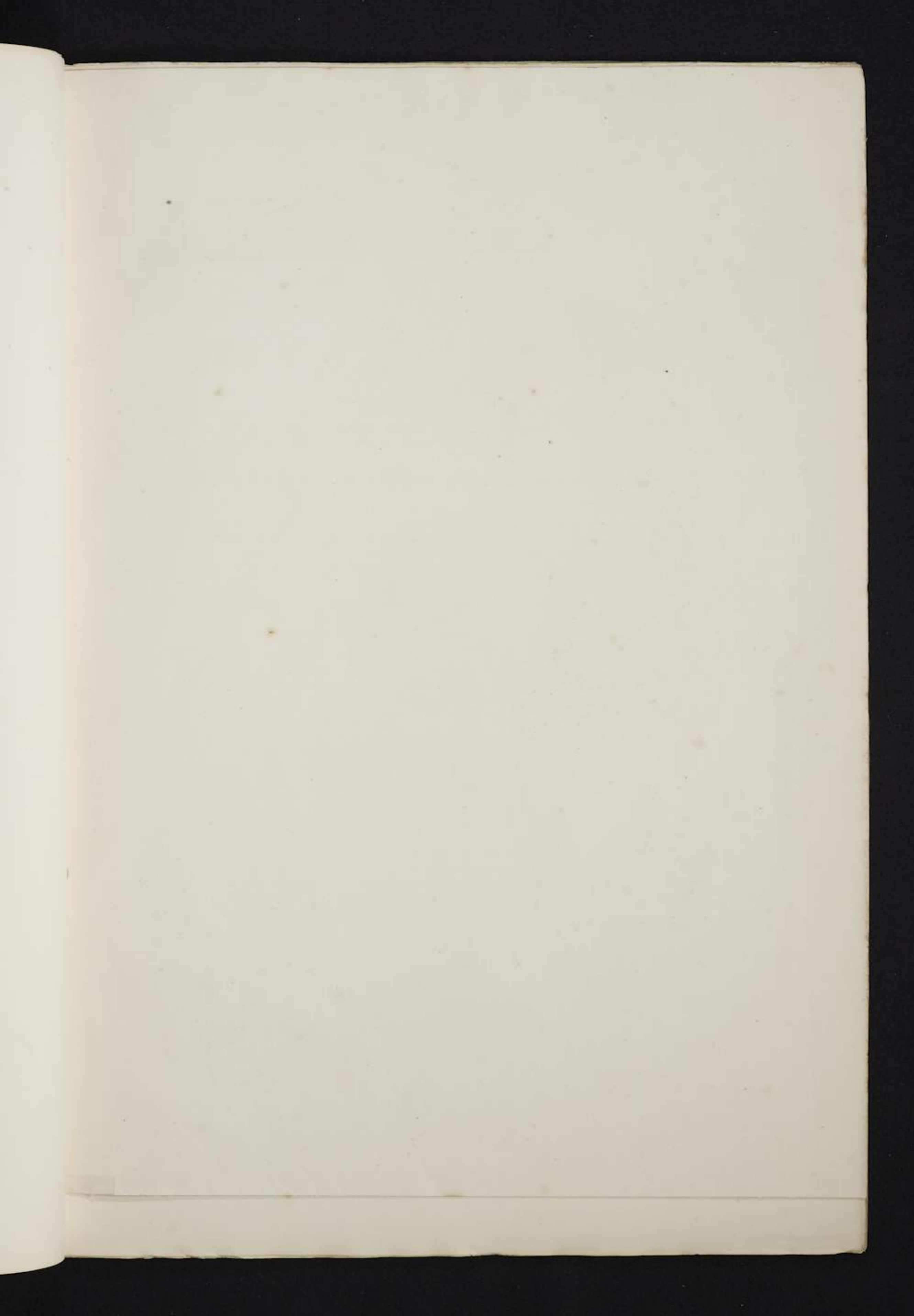
Forehead, top of the head, back of the neck, and space between the shoulders pale grey, minutely pencilled with black, and with an irregular mark of black from the top of the head along the back of the neck; sides of the face, ear-coverts, and chin rufous brown, the latter obscurely barred with black, a stripe of buff running from the angle of the mouth; wing-coverts mottled rufous, buff and black, each feather largely tipped with buff; base of the primaries black, banded with rufous, to which succeeds a central band of white, the remainder being brownish black; secondaries alternately with brown and rufous; scapularies rufous brown, freckled with black, bounded externally with blackish brown, and margined with buff; lower part of the back and central tail-feathers dirty buff, obscurely freckled and barred with blackish brown; outer tail-feather on each side black, with a white internal margin; the remaining tail-feathers white, under surface buff, barred with brown; a white semidivided gorget across the chest; bill and feet brown.

Nyctidromus Derbyanus, Gould, in Proc. of Zool. Soc. Part VI. 1838.

THE members of this group are confined to South America; they run much on the ground, and are remarkable for the great dilatation of the base of the under maxillary bones. There are at least ten species of this peculiar form, among which has hitherto reigned the greatest confusion. The present bird, which I have reason to believe has been confounded with other proximate species, I venture to distinguish by the title of *Derbyanus*.

The figure is of the natural size, and is taken from a fine example kindly lent to me by the Earl of Derby.







SEMEIOPHIDRUS (MACRODIPTERYX) VEXILLARIUS (Gmel.)



Genus SEMEÏOPHORUS, Gould.

CHARACTERES GENERICI.

Characteres ut in genere Macrodipteryx dicto, nisi quod remiges sextus, septimus, et octavus gradatim elongati fiunt, usque ad nonum, qui his, sicut vexillum, præstat, barbasque fert per totam longitudinem.

SEMEÏOPHORUS (MACRODIPTERYX?) VEXILLARIUS, Gould.

Semeioph. capite, alarum tectricibus, dorso, scapularibusque longioribus nigris, cervino, rufoque adpersis; nuchâ, torque, castaneo ornata; scapularibus brevioribus nigrescenti-fuscis rufo irroratis, et extus cervino late marginatis; alis nigrescenti-fuscis, primariis et ad basin, et apicem, secundariisque ad apicem albis; caudâ nigrescente, fusco, et cervino, necnon fasciis irregularibus nigris ornata; mento cinereo, et fusco, picto; gula sagittam albam ferente; pectore rufo, fuscoque ornato; abdomine cinerescenti-albo, fasciis nigrescentibus angustis crebrè notato; rostro pedibusque brunneis.

Long. tot. 10 unc.; rostri, 1; alæ, 28; caudæ, 5 $\frac{3}{4}$; tarsi, 1.

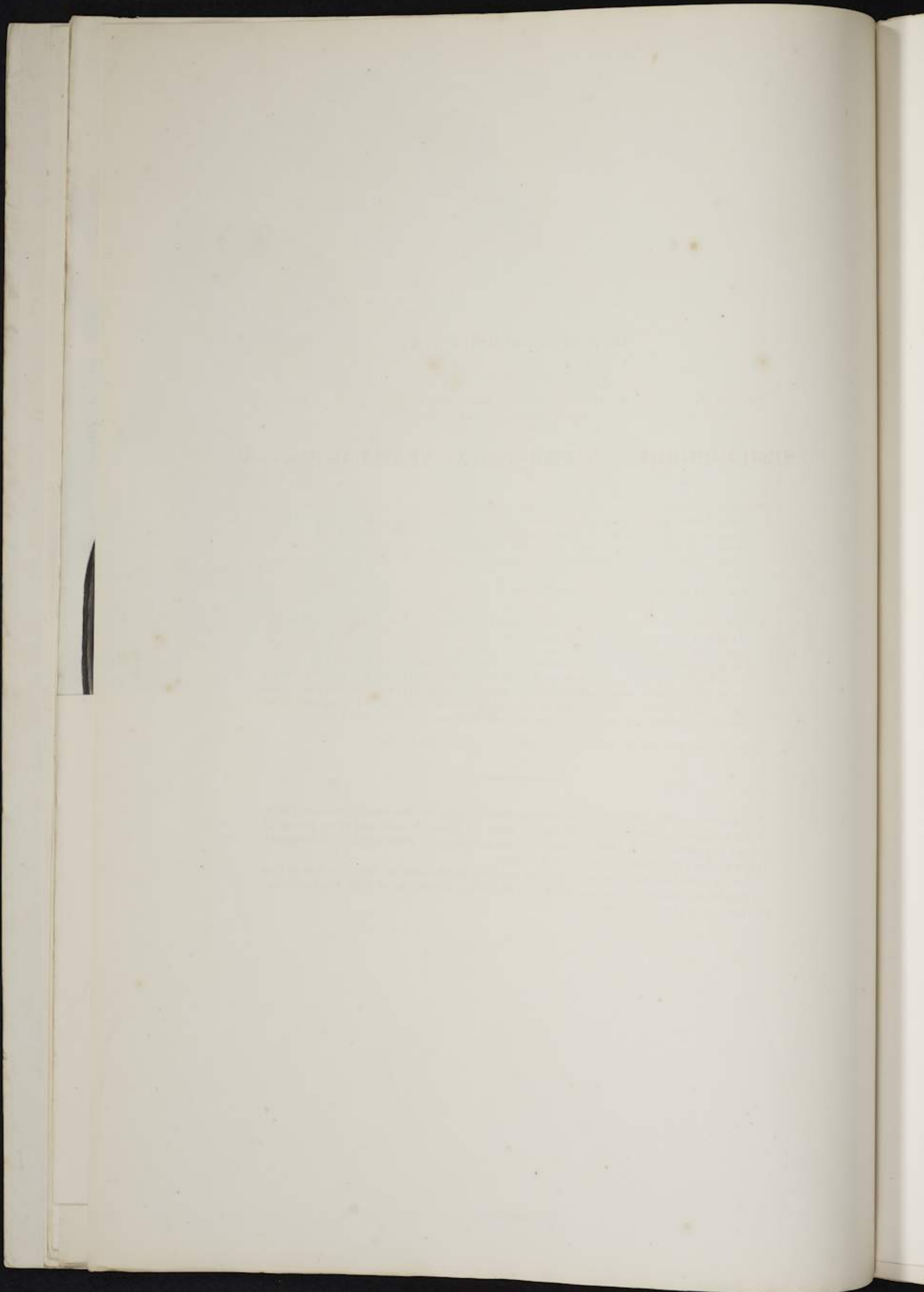
Head, wing-coverts, back, and the longest of the scapularies black, mottled with buff and rufous; round the back of the neck an irregular collar of reddish chestnut; shortest of the scapularies brownish black sprinkled with rufous, and with a broad stripe of buff along their outer margin; wings blackish brown, the base and tips of the primaries and the tips of the secondaries white; tail mottled blackish brown and reddish buff, crossed by large blotches of blackish brown, forming a series of irregular bars; chin mottled grey and brown; in the centre of the throat an arrow-head-shaped mark of pure white; remainder of the throat and chest mottled rufous and dark brown; abdomen greyish white, crossed by numerous narrow bars of brownish black, fading off into greyish white without bars on the vent and under tail-coverts; bill and feet light brown.

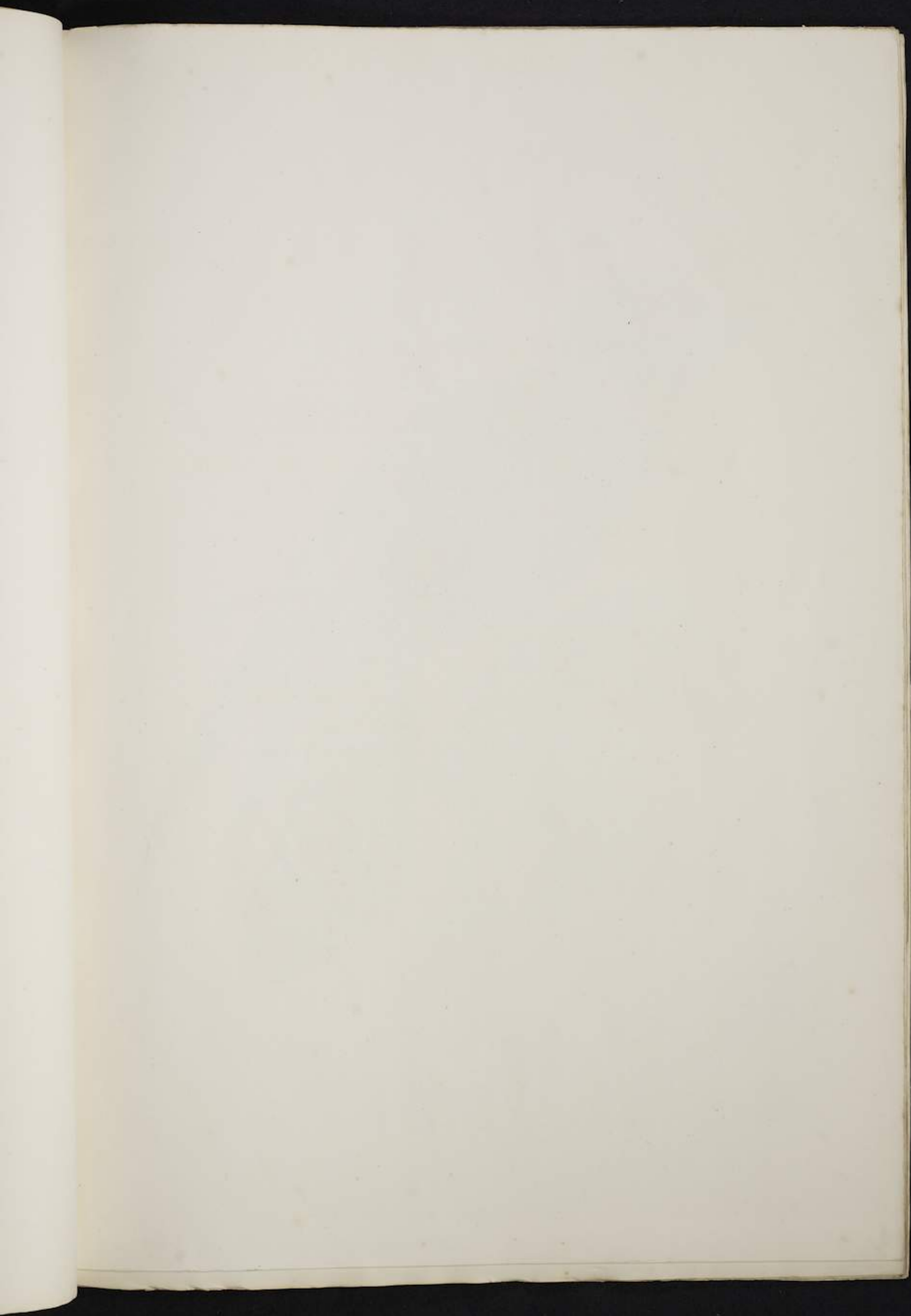
Semeiophorus (Macrodipteryx?) vexillarius, Gould, in Proc. of Zool. Soc. Part VI. 1838.

THE general structure of this species is precisely the same as that of the *Macrodipteryx Africanus*, Swains. and it doubtless represents that bird on the opposite side of the African continent; still, as the form of the wing is very different, I have ventured to propose for it a separate generic station, leaving future research to prove whether I have taken a correct view of the subject.

Little is known respecting this singular species further than that it inhabits the islands lying between those of Bourbon and Madagascar; that it is numerous on the shores of the Red Sea and in the Island of Scutra.

The figure is of the natural size.



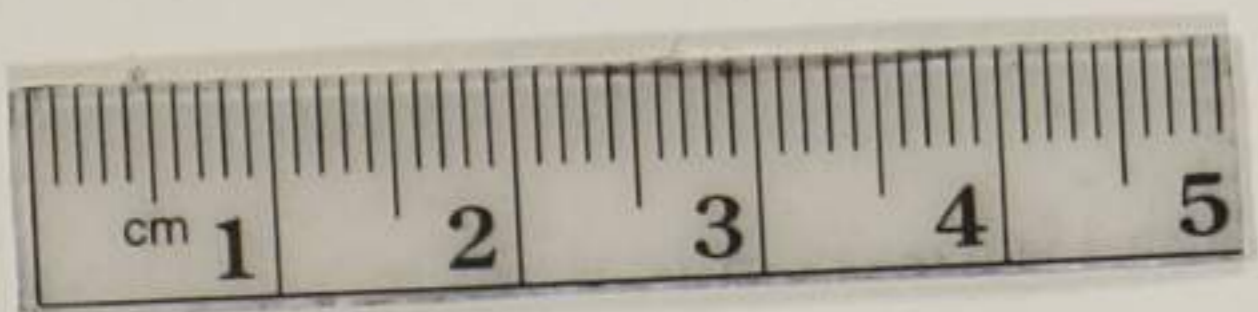




LYNCORNIS CERVINICEPS, (Gould)

Drawn from Nature on Stone by J. E. Smith

Printed by G. S. Edwards



Genus **LYNCORNIS**, *Gould*.

CHARACTERES GENERICI.

Caput penicillis elongatis (quasi auribus) instructum. Rostrum depressum et perdebile; rictu amplissimo, infra oculos tendente, setisque carente; naribus basalibus rotundatis, plumisque frontis obtectis. Alæ perlongæ, primariis rigidis, remige secundo longissimo. Cauda mediocris, æqualis, et, (sicut alæ,) notâ albâ carens. Tarsi breves, robusti, anticæ, plumis ex parte, tecti. Digiti breves, ad basin membranâ conjuncti, laterales æquales; intermediû unguis pectinatus.

LYNCORNIS CERVINICEPS, *Gould*.

Lync. vertice pallidè cervino, minutè nigro fasciato, plumis nonnullis notis nigris in medio ornatis; genis, plumisque auricularibus castaneis, nigro crebrè adpersis; penicillis capitis nigris; gulâ pectoreque nigrescenti-fuscis; lineâ albâ inter has partes dividente, dilutiore ad nucham, et in cervinum transeunte; abdomine cervino, plumis ad basin nigris; dorso alisque, cervino, castaneo, nigroque variegatis; primariis nigrescenti-fuscis, castaneo interruptè fasciatis; caudâ nigrescenti-fuscâ, cervino adpersâ, et interruptè, et latè fasciatâ.

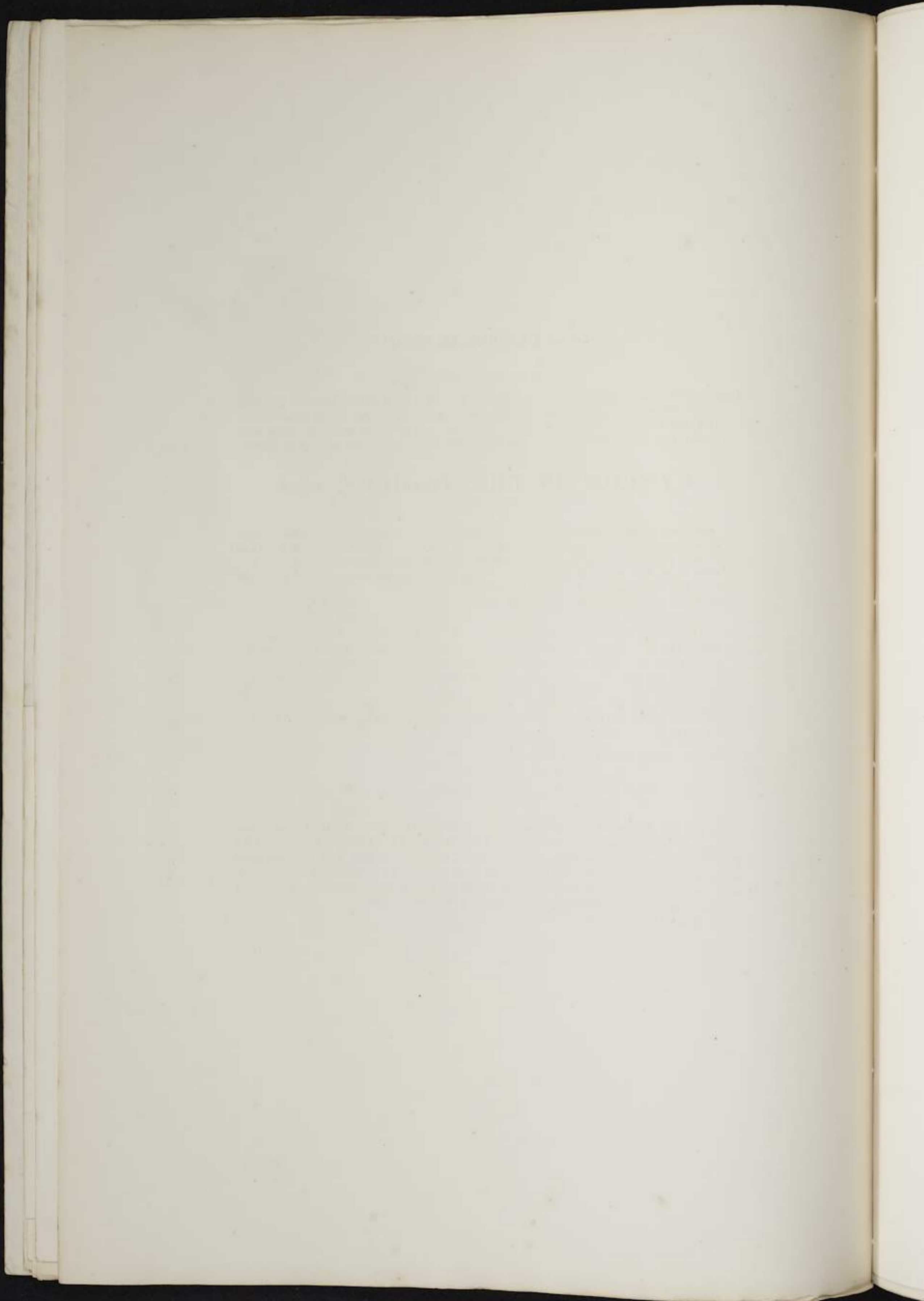
Long. tot. $23\frac{1}{2}$ unc.; rostri, $1\frac{5}{8}$; alæ, 12; caudæ, $7\frac{1}{2}$; tarsi, $\frac{3}{4}$.

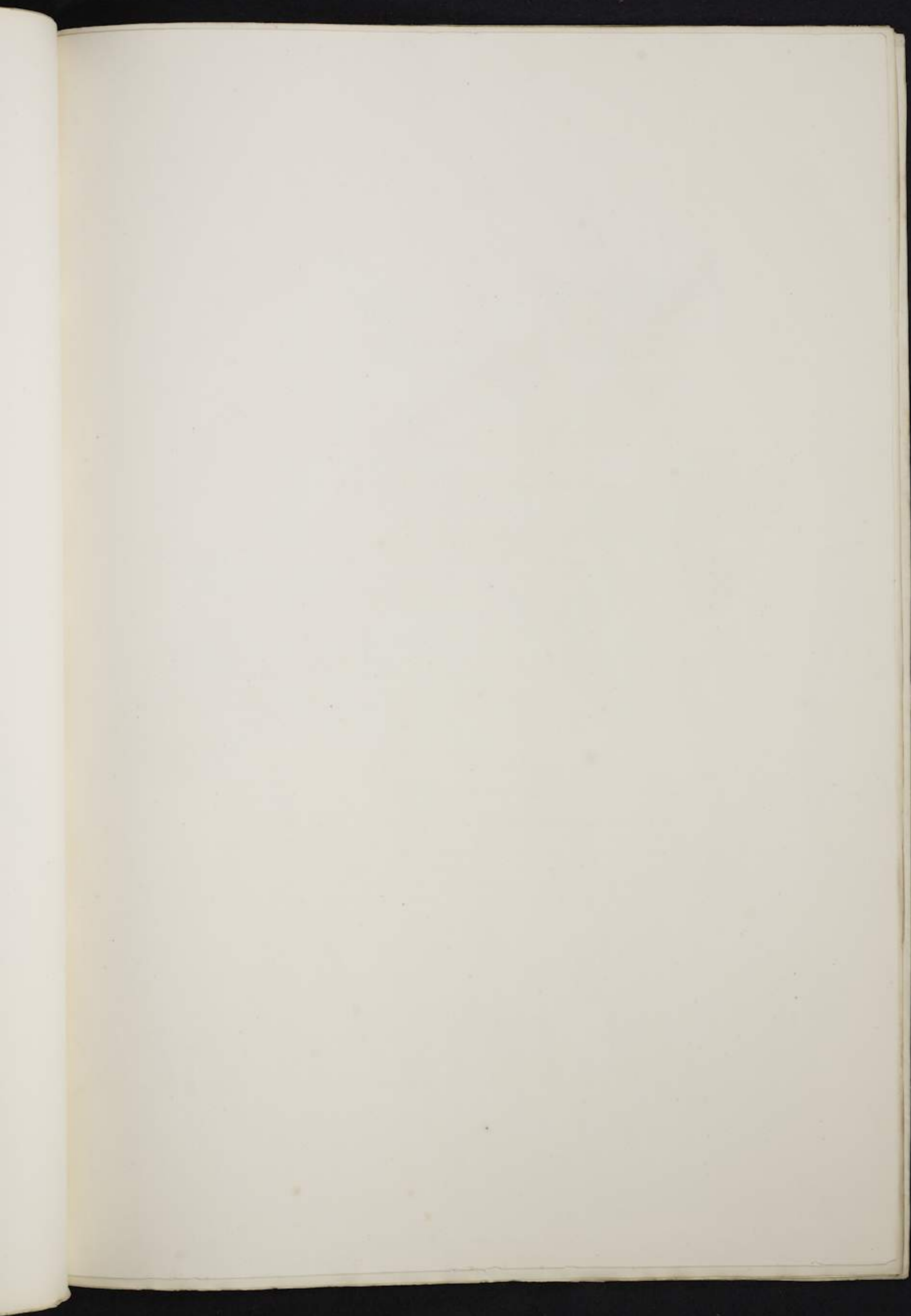
Crown of the head light buff, minutely barred with black, several of the feathers having central spots of the same colour; sides of the face and ear-coverts chestnut, largely freckled with black; egrets black; throat and chest blackish brown, with a line of white dividing the chest and throat, and expanding upon the back of the neck, where it deepens into fawn colour; abdomen and under-surface buff, with the basal portion of each feather black; back and wings mottled with buff, chestnut, and black, the buff predominating along the scapularies and down the centre of the wing; primaries blackish brown, with interrupted bands of chestnut; tail blackish brown, with four or five broad, irregular bands of buff, the black interspaces marbled with buff; bill and feet brown.

Lyncornis cerviniceps, Gould, in Proc. of Zool. Soc. Part VI. 1838.

I HAVE never seen more than a single specimen of this truly beautiful Goat-sucker; and this I received seven years ago; it was said to be a native of China or the adjacent islands. I have selected it as the type of the genus *Lyncornis*, a minor group among the *Caprimulgidæ*, conspicuous for their large eyes, lengthened egrets, and great powers of flight. The analogy of this group to that of the horned owls is too palpable to escape observation; the irides of the members of this genus will in all probability prove to be either yellow or hazel. The species described above is in the collection of the Zoological Society.

The figure is of the natural size.



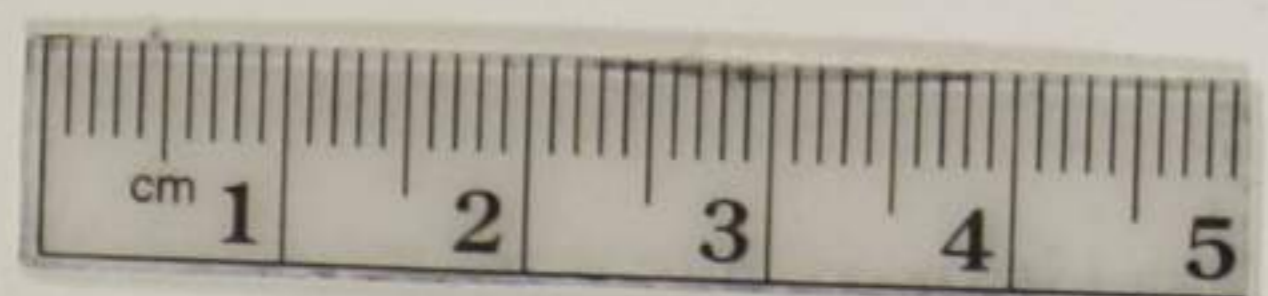




LYNCORNIS MACROTIS, (Gould).

Drawn from Nature & on Stone by J. & E. Gould.

Printed by C. Hullmandel.



LYNCORNIS MACROTIS.

Lync. vertice intensè castaneo, nigro irrorato, necnon parcè maculato; gula, facie, plumisque auricularibus nigrescenti-fuscis, castaneo irroratis; inter gulam pectusque annulo, anticè albo, apud nucham in cervinum transeunte; dorso, pectoreque saturatè nigrescenti-fuscis, castaneo obscurè notatis; abdominis plumis saturatè nigrescenti-fuscis, cervino largè marginatis; scapularibus cervinis nigro irregularitèr ornatis; alis saturatè nigrescenti-fuscis, fasciis castaneis ferè obsoletis notatis; caudà nigrescenti-fuscà, cervino irroratà et fasciatà; rostro pedibusque fuscis.
Long. tot. 12 unc.; rostri, $1\frac{1}{2}$; alæ, $10\frac{2}{3}$; tail, $7\frac{1}{4}$; tarsi, $\frac{3}{4}$.

Crown of the head deep chestnut, minutely freckled with black, several of the feathers having a central spot of the same colour; throat, face, and ear-coverts blackish brown, minutely freckled with deep chestnut brown; a ring of white separates the throat and chest and passes into buff on the back of the neck; back and chest deep blackish brown, with obscure marks of chestnut; the feathers of the abdomen and under surface deep blackish brown, largely margined with buff; scapularies fawn colour, irregularly marked and spotted with black; wing deep blackish brown, with nearly obsolete bands of chestnut; tail deep blackish brown, freckled and banded with deep fawn colour; bill and feet brown.

Caprimulgus macrotis, Vigors, in Proc. Comm. of Sci. and Corr. of Zool. Soc. Part I. 1830—31, p. 97.

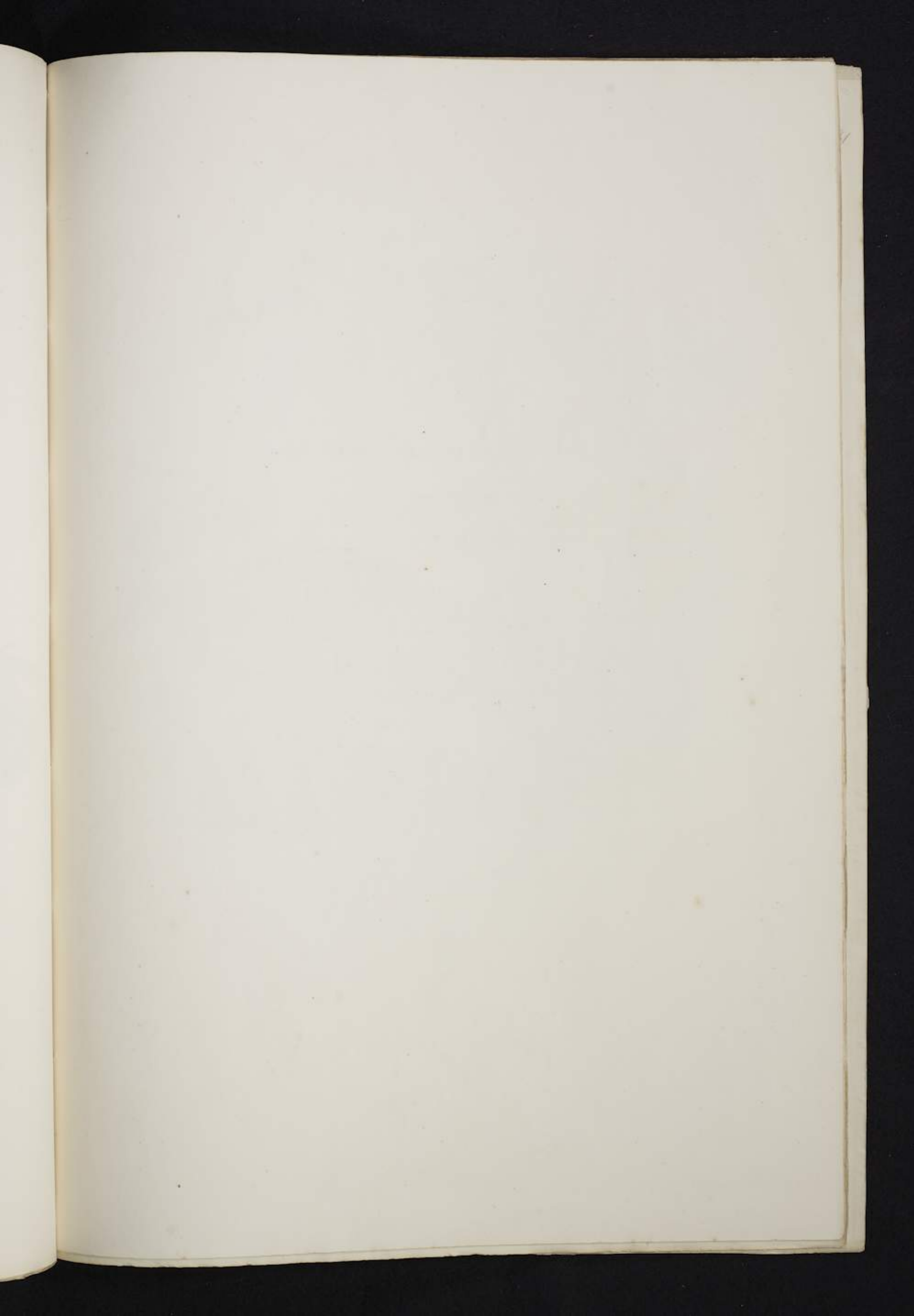
THIS species was first described by Mr. Vigors several years since, as the *Caprimulgus macrotis*. It was received from Manilla, and was presented by Hamilton Lindsay, Esq., to the Zoological Society, of whose collection it now forms a part. The specimen from which my drawing was taken is the only example that has come under my notice; it is less in all its proportions than *Lyncornis cerviniceps*, and also differs in the much darker tints of its plumage, particularly on the crown of the head, back and chest.

The figure is of the natural size.

RECEIVED

of the

of the





LYNCORNIS TEMMINCKII, (Gould).

Drawn from Nilsson's on Stone by J. E. Gould.

Printed by C. F. Johnson.



D
1931

LYNCORNIS TEMMINCKII, Gould.

Lync. vertice cinerescenti-fusco, nigro exiliter fasciato, et apud plumarum apicem maculato; gula castaneo nigroque fasciatá; annulo collum circumdante, anticè albo, posticè cervino; capitis penicillis, brevibus, nigris; pectore nigrescente, castaneo maculato; dorso, castaneo, cervino, maculisque nigris, ornato; remigibus alarum nigrescenti-fuscis, castaneo obsolete fasciatis; abdomine pallidè cervino, plumis singulis ad basin nigris; caudá fuscá, castaneo interruptè fasciatá; rostro pedibusque fuscis.

Long. tot. $10\frac{1}{2}$ unc.; rostri, $1\frac{1}{8}$; alæ, 8; caudæ, $5\frac{1}{2}$; tarsi, $\frac{1}{2}$.

Crown of the head greyish brown, minutely barred with black, many of the feathers having a black spot at the apex; throat barred with rich chestnut and black; round the neck a collar, which is white anteriorly, and buff posteriorly; egrets short and black; chest blackish, freckled with chestnut; back ornamented with tints of chestnut and fawn, spotted and irregularly freckled with black; quills blackish brown, with nearly obsolete bars of chestnut; under-surface pale buff mingled with black, which latter colour occupies the base of each feather; tail brownish black, with interrupted bars of chestnut; bill and feet brown.

Lyncornis Temminckii, Gould, in Proc. of Zool. Soc. Part VI. 1838.

THIS species I had named *Lyncornis collaris* in my MS., and my friend M. Temminck has recently sent me a specimen under the name of *imberbis*; now as the term *collaris* is applicable to every species of the genus, and the term *imberbis* equally so, I have considered it best to rescind both these specific appellations, and to substitute in their place that of *Temminckii*, thus dedicating the species to my excellent friend.

This appears to be a much more abundant species than the two preceding; I have several examples in my own collection. It is a native of Borneo.

The figure is of the natural size.

THE UNIVERSITY OF CHICAGO

THE UNIVERSITY OF CHICAGO
THE UNIVERSITY OF CHICAGO
THE UNIVERSITY OF CHICAGO

THE UNIVERSITY OF CHICAGO
THE UNIVERSITY OF CHICAGO
THE UNIVERSITY OF CHICAGO

THE UNIVERSITY OF CHICAGO
THE UNIVERSITY OF CHICAGO
THE UNIVERSITY OF CHICAGO

4
L
D
8, 1931



BATRACHOSTOMUS AURITUS, (Gould)

Drawn from Nature & on Stone by J. E. Gould.

Printed by C. Palmer & Co.



R.M.
collected
Dec 8, 1961

Genus *BATRACHOSTOMUS*, Gould.

CHARACTERES GENERICI.

Rostrum *latius, ac magis depressum quam in genere Podargus dicto, (cui generi hoc approximatur) culmine minus carinato. Nares tubulares, transversim positæ et penicillis tectæ. Oculi supernè cute nudâ latè marginati, et cristulis plumosis, alterâ superciliari, alterâ infra-oculari, posticè spectantibus instructi. Alæ quam in Podargo longiores, remigibus quarto, quinto, sexto et septimo longissimis et inter se ferè æqualibus. Cauda mediocris et rotundata. Tarsi digitique non tantum breviores sed debiliores quam in Podargo; tarsi anticè per dimidium plumosi.*

BATRACHOSTOMUS AURITUS.

MAS. *Batr. capite dorsoque superiore castaneis, lineis, guttisque irregularibus cervinis, fuscisque, ornatis; torque nuchali cervino; tectricibus alæ saturatè castaneis, nigro, notisque triangularibus stramineis ornatis; primariis saturatè fuscis, rufo irregularitè fasciatis apicibus rufis; scapularibus rufescentibus, singulis plumis nigro ad apicem guttatis; secundariis caudæque rufo-castaneis, lineis pallidioribus nigrescente marginalis, fasciatis; fasciis caudæ nigro adpersis; dorso imo fusco, rufo nigroque fasciato, cristulâ superciliari fusco, stramineoque pictâ; cristulâ infra-oculari rufescente, plumarum marginibus externis stramineis; gulâ pectoreque rufo-fuscis, illâ, colore pallidiore, necnon nigro, fasciatâ; hinc stramineo fasciato; abdomine cervino, colore pallidiore fasciato, plumis nonnullis nigro ad apicem guttatis; rostro ad basin flavo, ad apicem rufo-fusco; pedibus aurantiacis.*

FEM. VEL MAS JUN. *Differt solummodò plumis plus griseo lavatis, præcipuè scapularibus, torque nuchali pallidiore, plumarum apicibus cervinis nigro irregularitè cinctis.*

Long. tot. 16 unc.; rostri ab angulo oris ad apicem, $2\frac{1}{2}$; latitudo, $2\frac{3}{8}$; alæ, $11\frac{1}{4}$; caudæ, $8\frac{1}{2}$; tarsi, $\frac{7}{8}$.

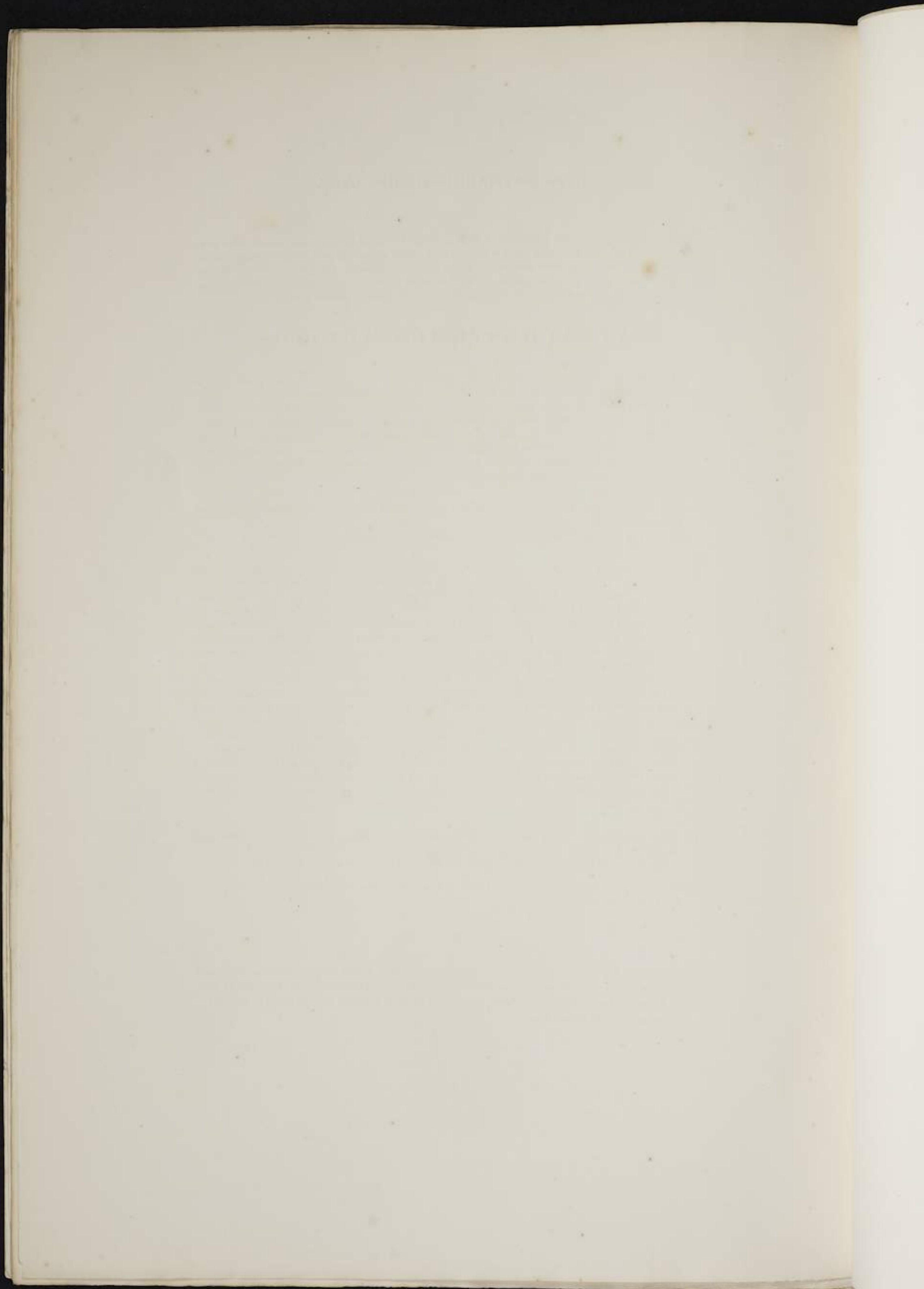
MALE. Head, and upper part of the back chestnut brown, each feather crossed by several irregular, reddish cream-coloured bars, which are bounded on each side with narrow lines of dark brown, the intermediate spaces being sprinkled with the same colour; feathers of the back of the neck largely tipped with reddish cream colour, forming a broad crescent round the back of the neck; wing coverts dark chestnut brown, irregularly rayed with black, each feather terminated with a triangular, cream-coloured mark, which is bounded on each of its upper sides with a patch of black, the extremity of each of these feathers having a spatulate recurved form; primaries dark brown, passing into reddish brown at the tip, and crossed by irregular bars of the reddish brown, which latter colour, especially on the inner webs, is sprinkled with blackish brown; scapularies the same, but with rufous tint pervading the whole, and each feather with a circular spot of black at the extremity of the stem; secondaries and tail reddish chestnut, each feather crossed by broad bars of a lighter tint, which are bounded on each side with a line of blackish brown, and those on the tail sprinkled with the same colour; lower part of the back dark brown, crossed by bars of reddish brown, which are bounded with black; tuft above the eye mottled brown and cream colour, that beneath the eye reddish brown with the outer webs cream colour; throat and chest rufous brown, the former crossed by indistinct bars of a lighter tint and black, and the latter by bars of cream colour which assume a spatulate form on the tips of some of the feathers, and give a spotted appearance to this part; the remainder of the under surface pale reddish fawn, crossed with indistinct bars of a still lighter tint, some of the feathers having a small spot of black near the tip; bill yellow at the base, passing into reddish brown at the tip; feet orange yellow.

FEMALE OR YOUNG MALE. Less in size; similar in the character of its colouring, but the whole of the upper and under surface strongly tinged with grey, especially on the scapularies; the nuchal collar much paler, with the cream-coloured tips of the feathers bounded both above and below with a broad irregular line of black.

Podargus auritus, App. to Mem. of Sir T. S. Raffles, p. 652. Fig. & Horsf. in Griffith's Transl. of Cuv. An. Kingd., vol. 2. Pl. IV. p. 114.

WE are indebted to the researches of the late Sir Thomas Stamford Raffles for our knowledge of this very singular species. It is a native of Sumatra, Malacca, &c., and was first described in the Appendix to Lady Raffles' Memoir of her distinguished husband; but nothing whatever is known as to its habits or economy.

The figures are of the natural size.



R. M.
collected
Dec 8, 1931



NYCTIBUS PECTORALIS; (Gould)

Drawn from Nature & on Stone by J. E. Gould

Printed by G. H. Wallcut



1c Rm
Uncollected
& collected
Dec 8, 1961

NYCTIBIUS PECTORALIS, Gould.

Nyct. alis caudâque haud albo fasciatis; fronte nigrescenti-fusco; plumis nonnullis, et præcipuè cistulis superciliaribus badio alboque terminatis; nuclâ dorsoque cinerescenti-fuscis, lineis nigris ornatis; scapularibus cinereo, fusco, nigroque pictis; humeris intensè fuscis; vittâ nigrâ a mandibulâ inferiore ad plumas auriculares excurrente; gullâ, corporeque subtùs cinereo brunneoque pictis, pectore nigro largè notato; abdomineque nigro irregularitèr fasciato; primariis intùs fuscis, irregularitèr brunneo fasciatis notatisque, externè cinereo fuscoque fasciatis. Caudâ fuscâ, nigrescente et cinereo intermixtis transversim fasciatâ; rostro pedibusque nigrescentibus.

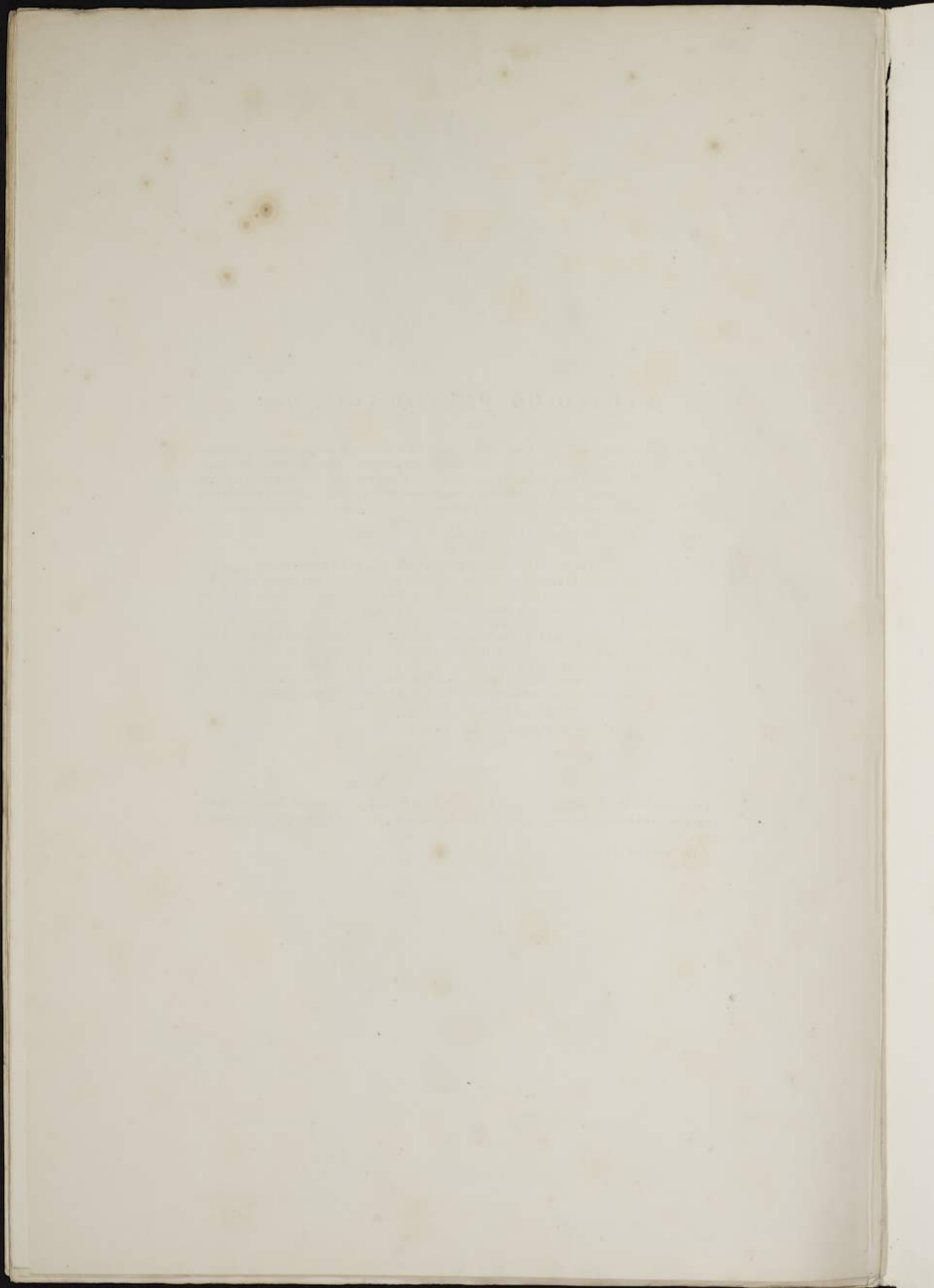
Long. tot. $12\frac{1}{2}$ unc.; rostri, $1\frac{1}{2}$; alæ, $9\frac{3}{4}$; caudæ, $7\frac{1}{4}$; tarsi, $1\frac{1}{4}$.

Wings and tail without any large white bar; forehead blackish-brown, some of the feathers slightly tipped with buff and white, particularly those of the elevated tufts which arise before each eye; back of the neck and back greyish brown, each feather with a fine black mark down the centre; scapularies mingled grey, brown and black, the latter colour in large patches and occupying the tips of the feather; upper surface of the shoulder deep blackish brown; under-surface the same, spotted with white; a black mark or band passes beneath the under mandible and ends at the ear-coverts; throat and all the under-surface finely mottled with light gray and light brown; the chest having large blotches of black running down the middle, and a crescent-shaped irregular band of the same crossing the upper part of the abdomen; primaries brown on their inner webs with obscure, indistinct blotches and irregular bands of lighter brown, their external webs obscurely banded with light grey and brown; all the tail-feathers brown, crossed with obscure, broad, arrow-headed, mottled bars of blackish brown and grey; bill and feet blackish brown.

Nyctibius pectoralis, Gould, in Proc. of Zool. Soc. Part VI. 1838.

THIS species inhabits the northern parts of Brazil. It is nearly allied to *Caprimulgus Jamaicensis*, but is much less in all its admeasurements; it is also allied to, but differs from the *Caprimulgus longicaudatus* of Spix.

The figures are of the natural size.



Old R.M.
described
& collected
Dec 8, 1961

