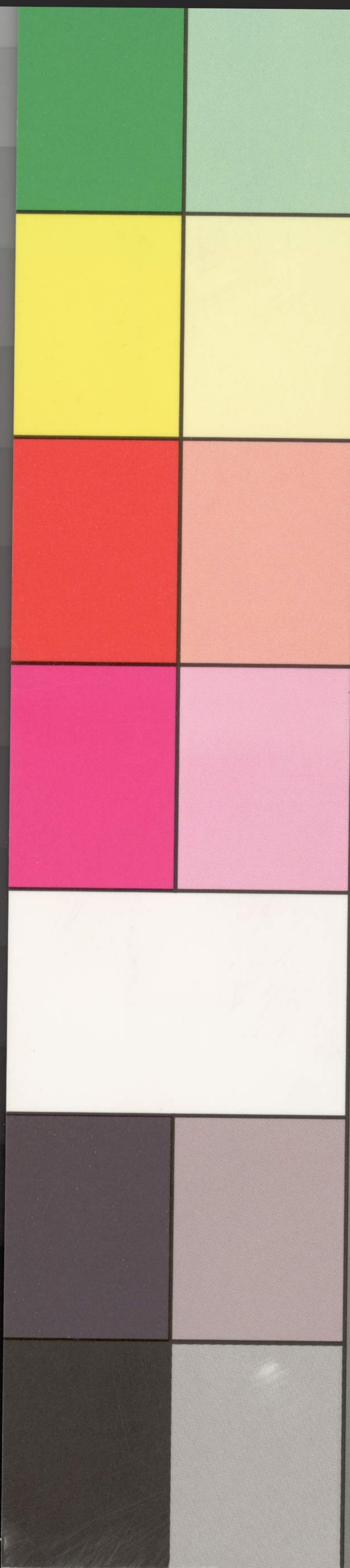


is scattered over a region of country of about 150 miles square, comprising 39 counties. In point of population, Leavenworth county, before the erection of Wyandott county, was far ahead of any other, and in August, 1858, cast 2,659 votes; and now that her limits are considerably decreased from their original proportions, is still ahead of any other county both in wealth and population. Douglas county is second; cast 1,825 votes; Doniphan comes third in rank, and cast 1,348 votes. No other county has over 1,000 votes. In view of the immense emigration preparing to rush into Kansas at the first opening of spring, there is but little doubt that before the convening of the next Congress, Kansas will have a population of over one hundred thousand souls.



Green
Yellow
Red
Magenta
White
3/Color
Black