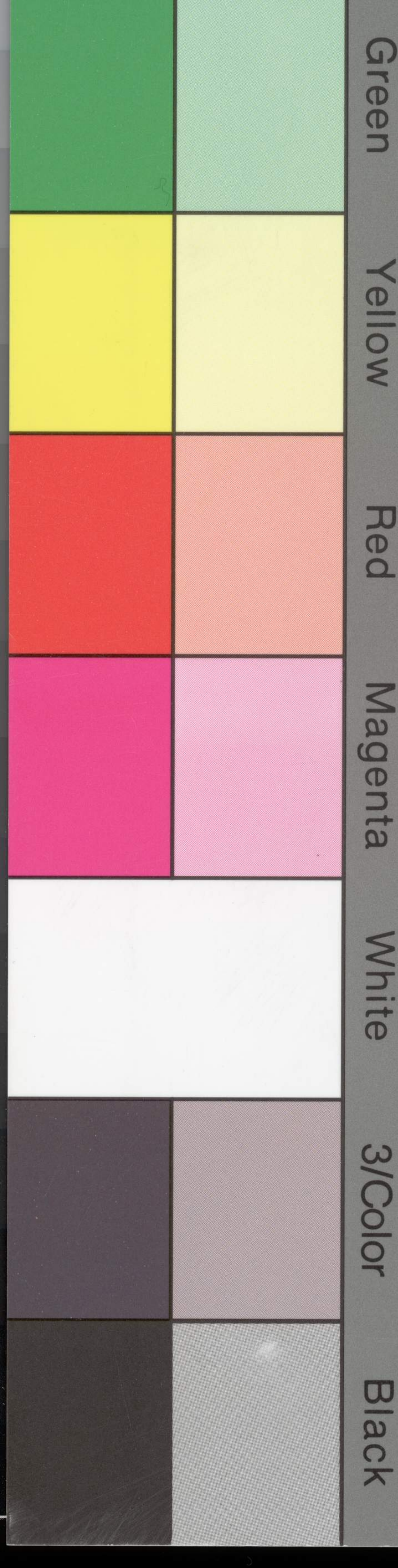


DISTANCES TO THE MINES.

To	Miles.	Total.
Lost Spring.....	13	148
Cottonwood Creek.....	17	165
Turkey Creek.....	25	190
Big Muddy.....	15	205
Little Arkansas.....	3	208
Big Cow Creek.....	15	223
Arkansas River.....	20	243
Allison's Ranch.....	5	248
Pawnee Rock.....	16	264
Ash Creek.....	5	269
Pawnee Fork.....	7	276
Forks Santa Fe Road.....	4	280
Arkansas Crossing.....	105	385
Bent's Fort.....	150	535
Puebla.....	90	625
Head Cherry Creek.....	80	705
Auraria.....	40	745
Leavenworth to Mines, via this route.....	740	miles.

Northern, or Fort Kearney Route.

Leavenworth to	Miles.	Total.
Salt Creek.....	4	...
Mount Pleasant.....	11	15
Cross Roads.....	20	35
Grasshopper.....	8	43
Rock Creek.....	6	49
Big Grasshopper.....	4	53
Walnut Creek.....	6	59
Wolf Creek.....	21	80
Nemaha.....	18	98
Vermillion.....	20	118
Marysville.....	18	136
Atchison to Marysville.....	120	miles
St. Joseph to Marysville.....	140	"
Fort Kearney.....	163	299
Crossing South Platte.....	155	454
Fort St. Vrain.....	200	654
Auraria.....	45	700
Atchison to Auraria.....	684	miles
St. Joseph to Auraria.....	692	"



nd it is
many
moun-
catter-
s that
h this
mber
es in
f the
pay
un-
cher
all
the
self

ly
L.
3
0
9
3

connecting any town on the Missouri river with
Gardner, Kearney, and Scott Blaine
Minnesota Superior, Redwood, Connel Grove, and
poor Santa Fe, Cherry Creek, Pike's Peak, and all