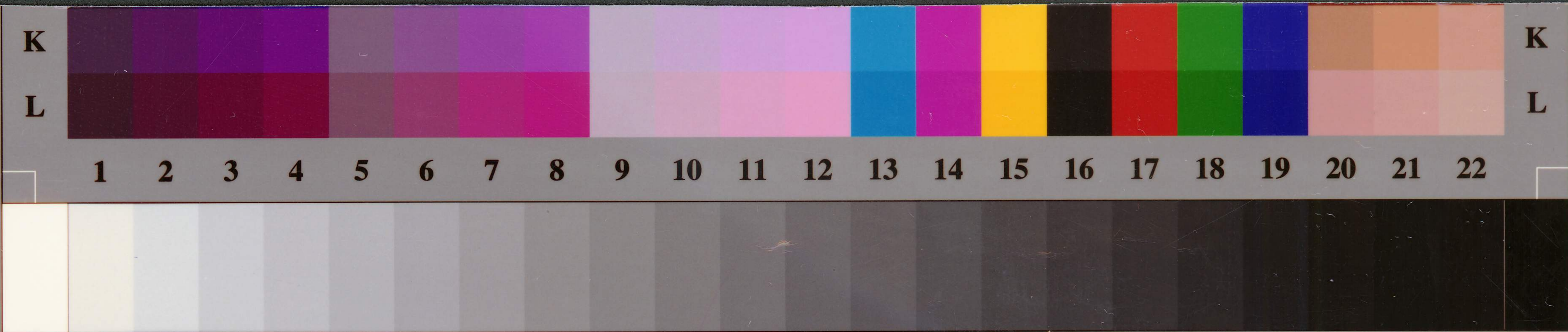




1927



IT8.7/2-1993
1998:03

Q-60R1 Target for
KODAK EKTACOLOR
Professional Papers

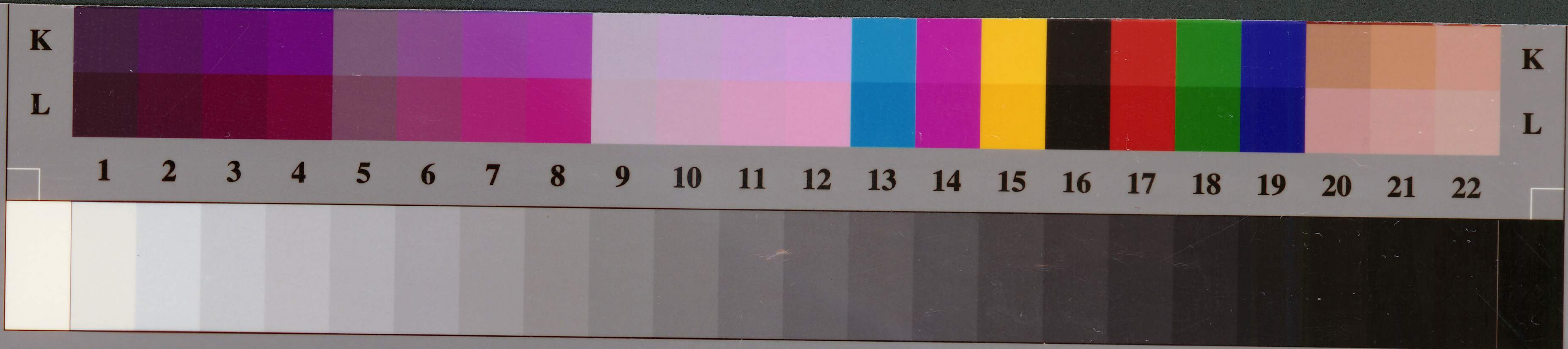


HARVESTING WHEAT
IN KANSAS, 1914

Much wheat is harvested in Kansas, with a header cutting 10 or 12 feet. The header is pushed into the grain by six or eight horses, a sickle clipping the heads and a rolling canvas elevating them into a headerbarge drawn alongside, and in it conveyed to stacks in convenient places, to be threshed later.

Photo by
ULMER, THE PICTURE MAN,
Abbyville, Kansas

RH PH P2606



IT8.7/2-1993
1998:03

Q-60R1 Target for
KODAK EKTACOLOR
Professional Papers

