

FISH AND GAME NEWS

The announcement of a closed bass season for Kansas, as announced last week in this column, brought forth the usual and expected criticism from one or two columnists, long noted for their vitriolic and bitter denunciation of the Kansas Fish and Game Commission and their policies.

Kansas' ever popular fishing sport is designed for all people, regardless of age, color, creed or social standing. In an effort to provide bigger and better fishing annually for the vast angling population, the Fish and Game department works untiringly toward this goal. Hence the decision to have a closed season on bass was based on scientific facts and sound fish management practices.

Kansas is not alone in having a closed bass season. Thirty-one of the 48 states, on which records are available, have a closed bass season, and in most instances, a much longer closed season than has Kansas. Missouri keeps the season closed on bass from December 1 to May 29; Arkansas has a closed season from March 15 to May 15, in all public waters except big Norfolk lake which is open the year around. Iowa has a closed season from February 15 to June 1. Nebraska, Colorado, and Oklahoma are three of the states which have no closed season.

Investigations by other states, as well as the experience of Kansas anglers, has demonstrated the fallacy of depending solely on the stocking of pond fishes as the solution of fishing woes. In Kansas waters, the bass is the most cannibalistic of all species. They don't care whether they eat other fish or their own young! If sufficiently abundant bass can be encouraged to prevent other less desirable panfish from taking over our fishing waters, our fishing will be better off. It is to give the bass more of a chance to spawn that Kansas has a closed season on bass.

It is true that climatic conditions vary in Kansas, but like the birds and bees and all forms of life, bass do reproduce and have a spawning season. Tests by the Commission's fisheries biologists show that, normally, most bass will spawn during the closed season in Kansas. It is as short a closed

season as possible to give anglers a break and still accomplish production aims.

On the highways, spring is a dangerous season for wild birds and animals. All manner of animals and birds fall before the "mechanical predator." A complete year-long tabulation of wild life killed on the highways makes a sickening report, but such figures do not begin to indicate the enormity of the loss. It must be recognized that most birds and animals highway killed in spring are brood stock. With their death tens of thousands of anticipated young fail to come forth and dependent young fail to survive for lack of mother care. Also, many thousands of eggs fail to hatch because birds that laid them have been road-killed.

The humane, sporting thing for motorists to do is to ease the pressure on the accelerator or apply the brakes lightly, thereby allowing a little extra escape time for wildlife on roadways. Lights switched off and on at night or horn blowing anytime will often frighten into action wild creatures that have "frozen" from fear in a vehicle's path.

In most cases, the decision whether wildlife on the road shall

live or die rests with the car driver.

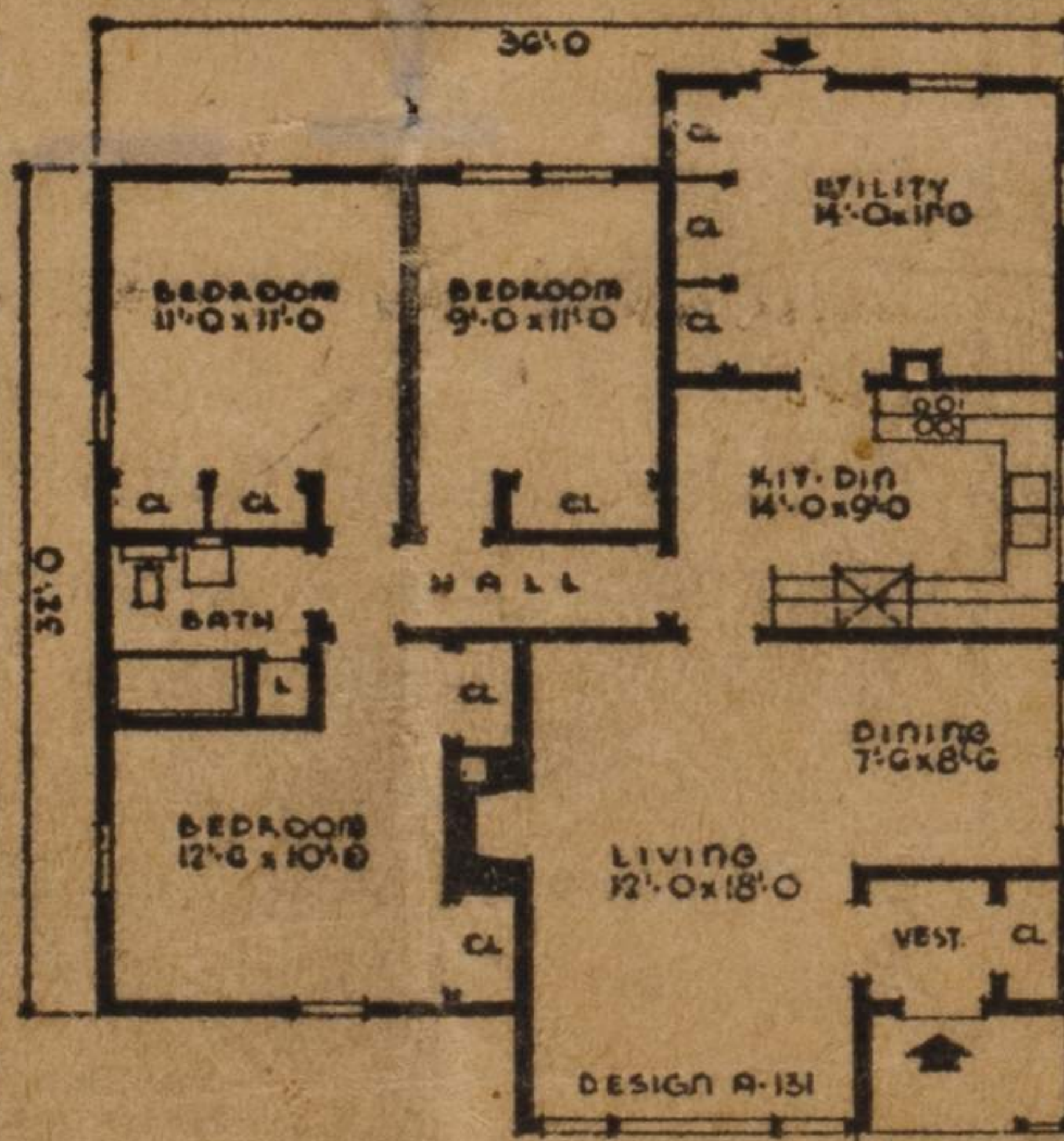
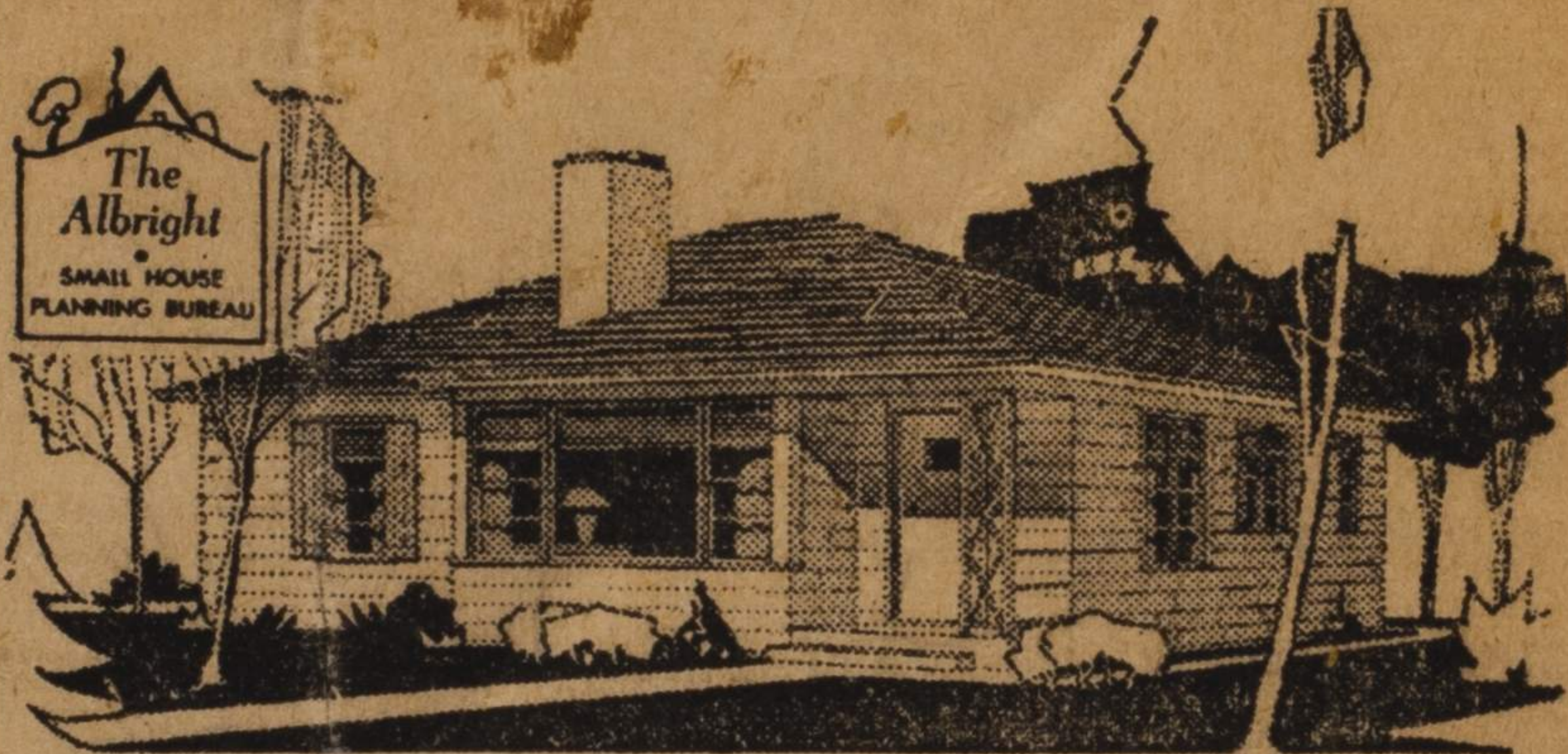
ENJOY SPRING SAFELY

Every year when spring blossoms out in full regalia, children can hardly wait to start some of those outdoor activities which have been impossible during the winter months. However, they are in serious danger if they play ball or roller skate in the streets, and forget to observe safety rules.

A child learns through two specific channels. He learns through education, and through habits resulting from observation and imitating others. If an adult jaywalks on the way to the grocery store, or ignores traffic rules, the children will follow his example.

Has your child been taught to: Cross at street crossings only when the way is clear; ride a bicycle with the same care that father should use in driving the car; obey all traffic signs and rules; and avoid playing in alleys, streets, or driveways? A child may know these rules, but in a spurt of excitement may forget at times. So, always keep an eye open for children when you drive.

Last year in Kansas, 25 children from five through 14 years of age inclusive, were killed in motor-ve-



THE ALBRIGHT is a typical bedroom house featuring wardrobe type closets in each. All rooms including the kitchen open directly into a small hall. The entrance vestibule includes a coat closet, while the bathroom has a handy

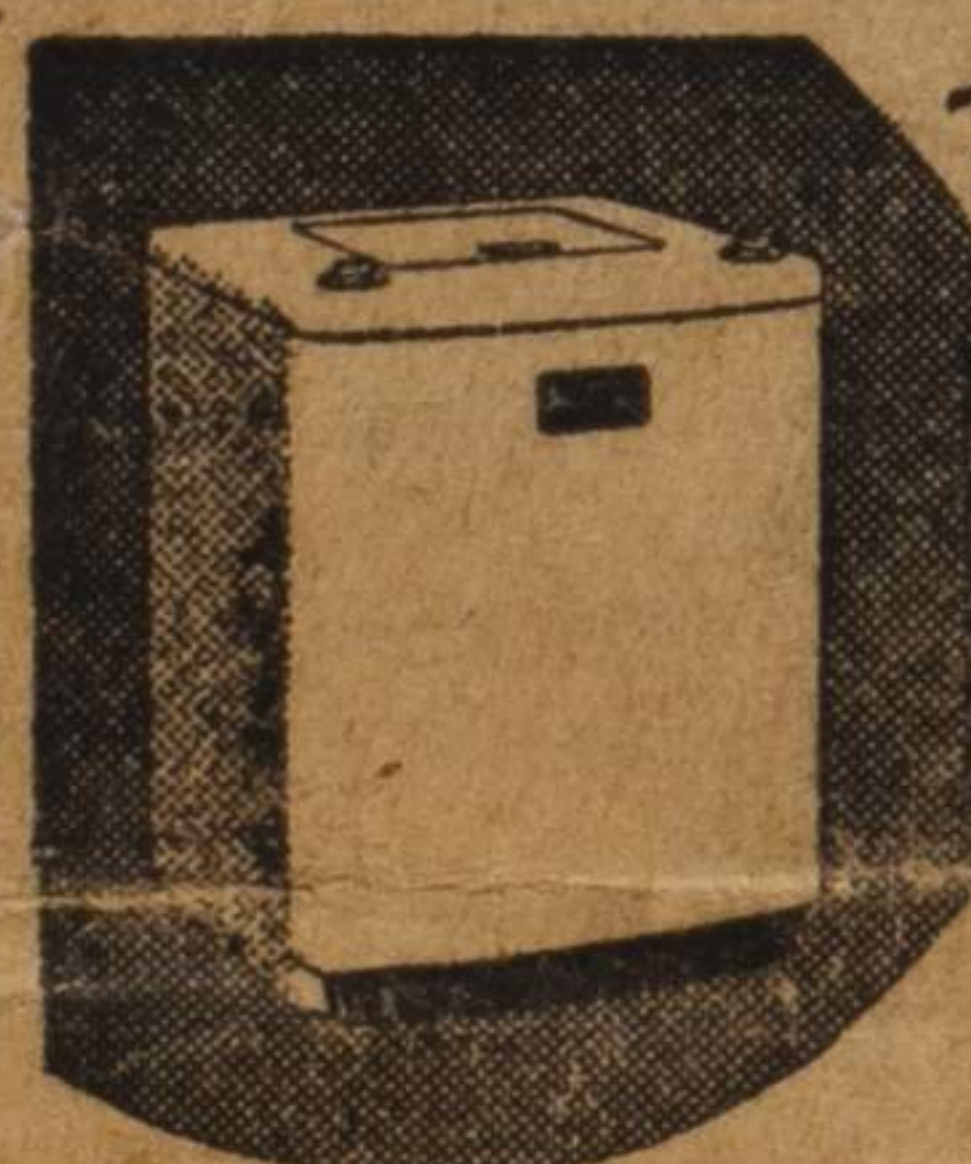
linen closet.

In place of the basement, a large utility room is provided for the heating plant and laundry. A storage wall provides for storage space.

An insulated floor slab is poured on a bed of cinder or gravel fill & covered with asphalt tile, linoleum or carpeting. The double glazed picture window in the L-shaped combination living-dining room provides light from both sides and a two way view. The kitchen has ample space for dining. The living room fireplace may be omitted.

Exterior walls are frame with wide siding. The hip roof has asphalt shingles and wide overhanging eaves.

Dimensions are 36 feet by 32 feet. Floor area is 1261 square feet with cubage of 16,284. For further information about **THE ALBRIGHT** see us.



For cleaner clothes!

THE MAYTAG AUTOMATIC WASHER

Set it. Forget it. Maytag does all the work. See it today.

Low Down Payment Easy Terms \$279.95

Pratt Implement Co.
Hill City, Kansas

Hardman Lumber