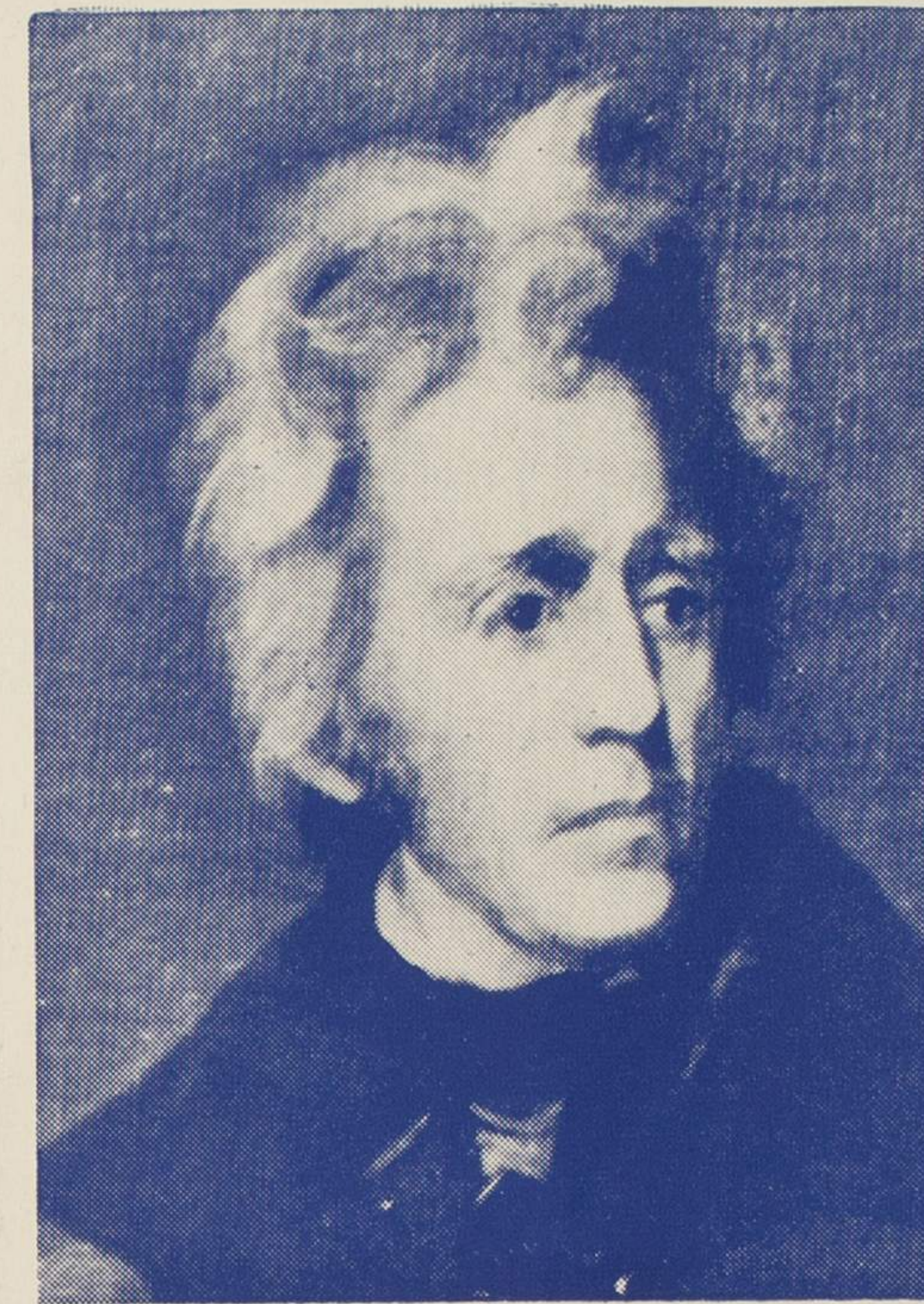




THE HONORABLE HARRY S. TRUMAN



## PROGRAM

THE HONORABLE EDITH S. GREEN, M.C., PRESIDING

Invocation.....RABBI JULIUS J. NODEL  
*Spiritual Leader, Temple Beth Israel*

The National Anthem.....THE MELODEERS

## REMARKS

THE HONORABLE EDITH S. GREEN, M.C.

MRS. KATIE LOUCHHEIM

*Director of Women's Activities, Democratic National Committee*

THE HONORABLE PAUL M. BUTLER

*Chairman, Democratic National Committee*

THE HONORABLE WAYNE L. MORSE, U.S.S.

## ADDRESS

THE HONORABLE HARRY S. TRUMAN

John Emmel's Music

Network Radio Broadcast: C. B. S.

Film Coverage: C. B. S. News  
Fox Movietone News  
Telenews