

# NICODEMUS

## NEWS REVIEW

SPRING ISSUE

1992

### OFFICERS

President  
Angela Bates

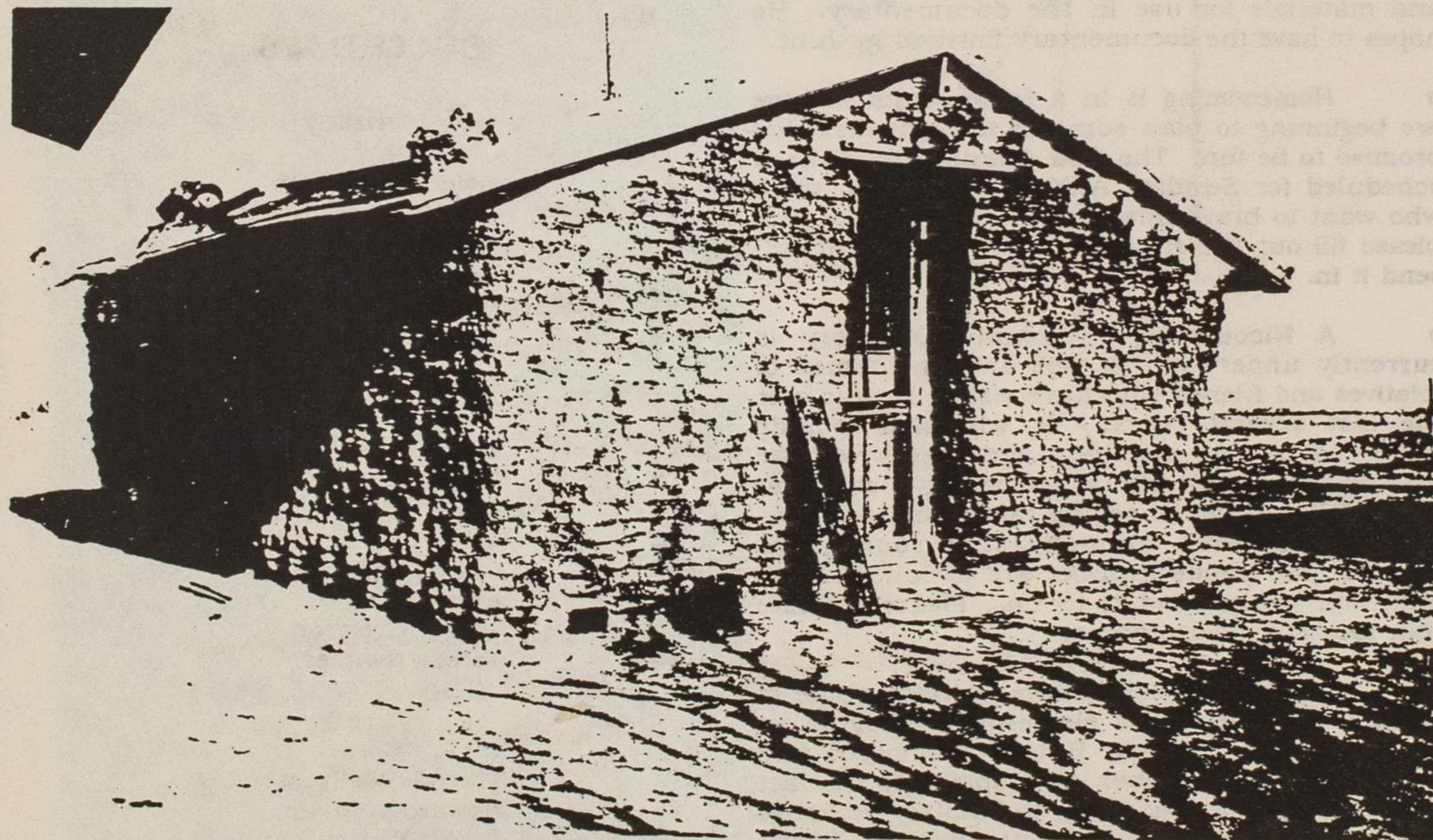
Treasurer  
Gil Alexander

Secretary  
Vickie Jones

*Angela Bates/Editor*  
*Earlice Rupp/Co-Editor*

### HISTORICAL TRIVIA

Dug outs were the first houses that the settlers of Nicodemus lived in. These structures were usually 14 x 16 x 4 or 6 deep in the earth, with weeds for roofs. Fleas, rodents, and flooding were constant problems. To eliminate the flea problem, many would wash the floors down with hot water. This only provided temporary relief. The floors were hard and were swept clean like we sweep floors today. After the dug outs people lived in 'soddie or sod houses'. These were similiar in size to dug outs, however they were erected above ground and made from Kansas prairie/sod. Since wood was scarce, people continued to live in these until wood could be obtained and houses built. More permanent structures such as large community buildings, churches, stores, etc. were made of native limestone.



SOD HOUSE

(Courtesy Kansas State Historical Society)