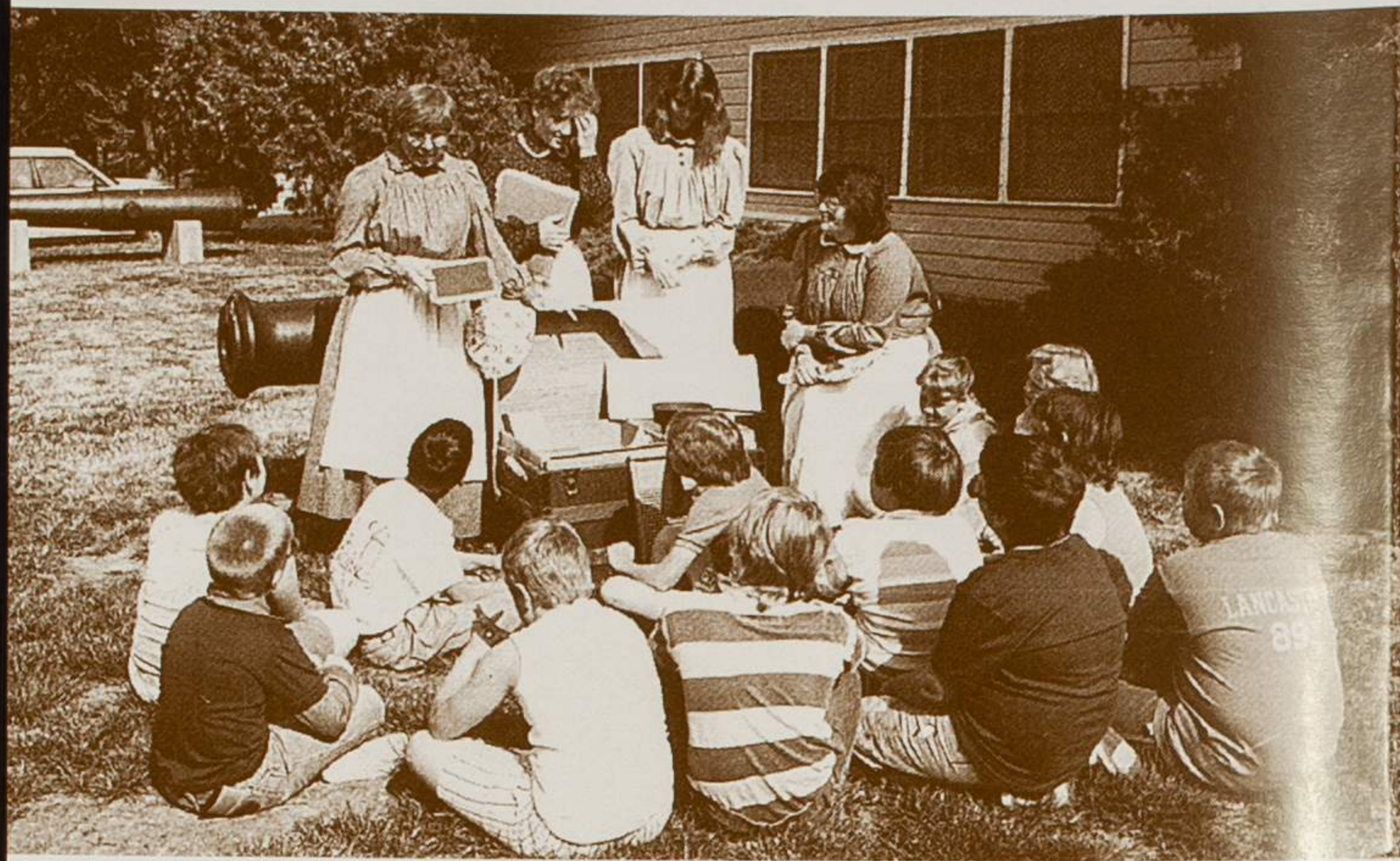


1. Bingham-Waggoner Estate

313 W. Pacific St., Independence, MO 64050
(816) 461-3491

Take pleasure from touring this beautiful estate, which sat astride the great commercial and military road known as the Santa Fe Trail. Travel back to the early 1800s and imagine the long line of traders, missionaries and settlers passing by on their way west. View paintings, chandeliers, oriental carpeting and other Victorian and Edwardian furnishings collected by the Waggoner family, who called this house their home for 98 years.

Apr-Oct: Mon-Sat, 10-4; Sun, 1-4.
Escorted tours available.
Admission: Adults-\$3, seniors-\$2.50;
children (6-16)-\$1; children under 6, no charge.



2. National Frontier Trails Center

318 W. Pacific St.
Independence, MO 64050
(816) 325-7575

The three great trail routes—the Oregon, California and Santa Fe Trails—all began in or near Independence. Retrace the steps of the pioneers through their own words. Read and listen to diary entries of the pioneer families, and inspect period artifacts. Located near the Public Spring Site where the settlers filled their water barrels. Experience what life was like on the trails at the only interpretive center, museum and archives dedicated to the three major trails.

Weekdays, 9-4:30;
Weekends, 12:30-4:30. Closed major holidays.
Admission: Adults-\$2.50, children (10 to 17)-\$1;
no charge for children under 10.

3. Rice-Tremonti Home

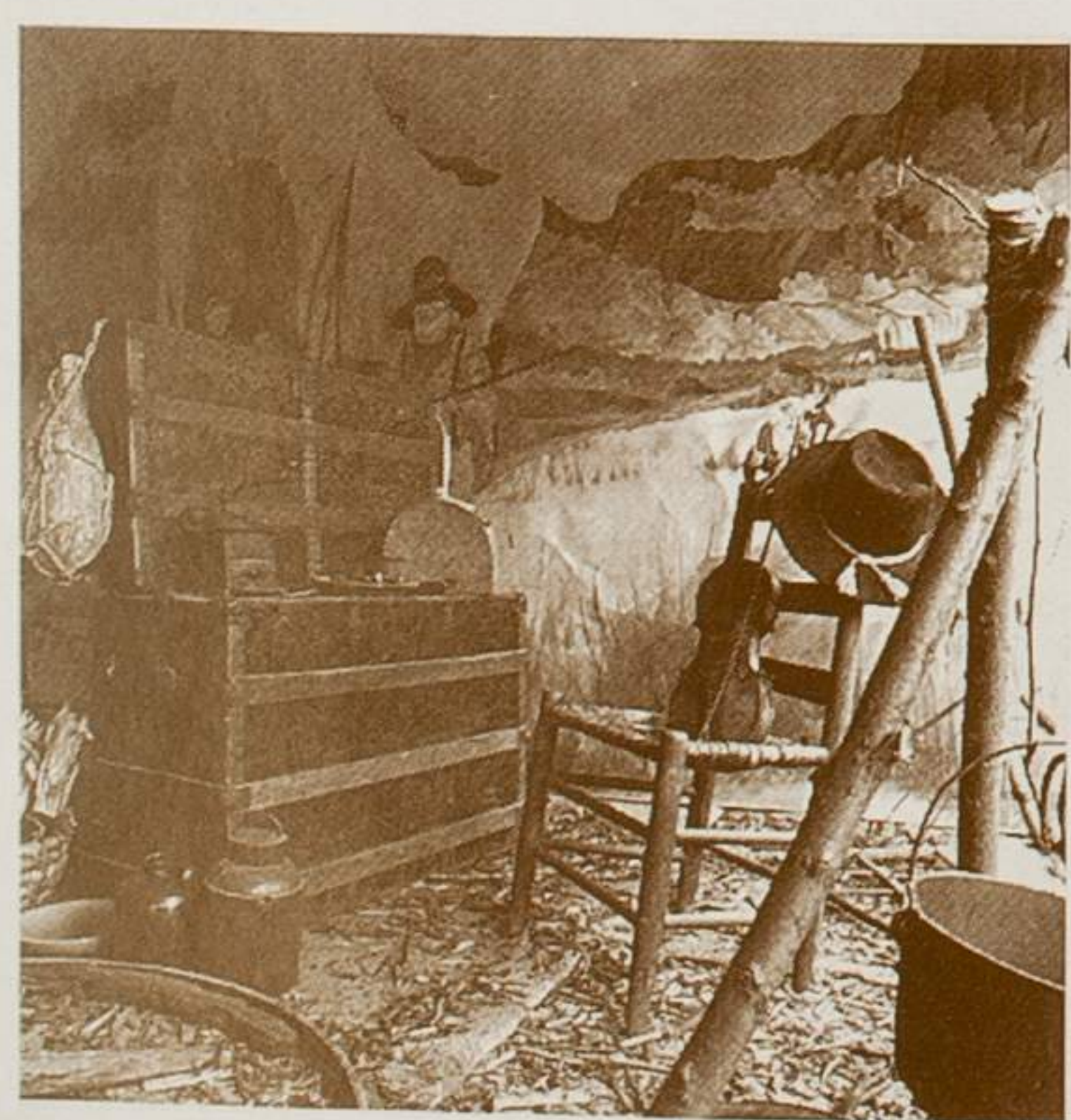
8801 E. 66th St.
Raytown, MO 64133
(816) 353-4023

Visit this popular camping site along the Santa Fe Trail, less than a day's journey by wagon from Independence. Listed on the National Register of Historic Places, this farmhouse had space for wagons, springs for watering, and corn and prairie grass for feeding animals.

Open by appointment. Escorted tours available.
Admission: \$2.

4. Cave Springs Interpretive Center

8701 E. Gregory Blvd.
Kansas City, MO 64138
(816) 358-2283



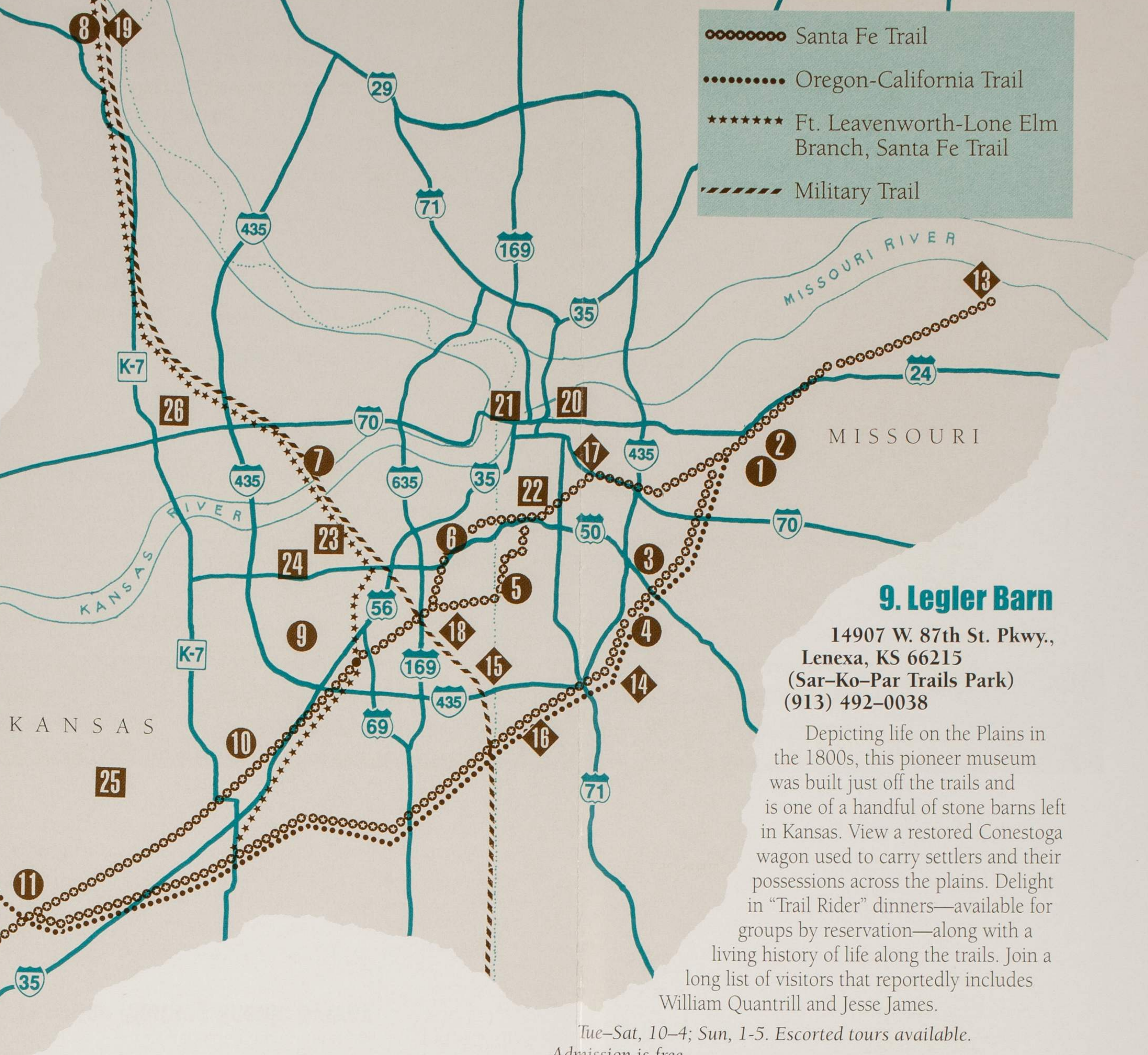
Tue-Sat, 10-5.
Admission: \$1. Escorted tours available.
Program fees are based on the length of the program and the age of the group.

5. Alexander Majors House and Park

8201 State Line Rd.
Kansas City, MO 64114
(816) 333-5556

Many believe the future of the American West began with Russell, Majors & Waddell—operators of the largest freighting operation on the trails and founders of the famous Pony Express. Step back into history as you walk through Majors' 1856 antebellum home. Experience a working blacksmith shop. Stop at the wagon museum, and the barn and gift shop.

Apr-Dec: Thu-Sun, 1-4. Escorted tours available.
Admission: Adults-\$2.50, children-\$1.



9. Legler Barn

14907 W. 87th St. Pkwy.,
Lenexa, KS 66215
(Sar-Ko-Par Trails Park)
(913) 492-0038

Depicting life on the Plains in the 1800s, this pioneer museum was built just off the trails and is one of a handful of stone barns left in Kansas. View a restored Conestoga wagon used to carry settlers and their possessions across the plains. Delight in "Trail Rider" dinners—available for groups by reservation—along with a living history of life along the trails. Join a long list of visitors that reportedly includes William Quantrill and Jesse James.

Tue-Sat, 10-4; Sun, 1-5. Escorted tours available.
Admission is free.

6. Shawnee Indian Methodist Mission

3403 W. 53rd St., Fairway, KS 66205
(913) 262-0867

This manual labor school for Indian children—dating from the 1830s—was one of the first water stops along the Oregon and Santa Fe Trails. The Westport branch of the trails crossed right through the grounds, where Indian children from many tribes learned basic academics, manual arts and agriculture. The first territorial



legislature met here in 1855. The main building contains original furnishings depicting life in the Indian territories. Visit the exhibit gallery and view artifacts made by the nearly 200 American Indian students.

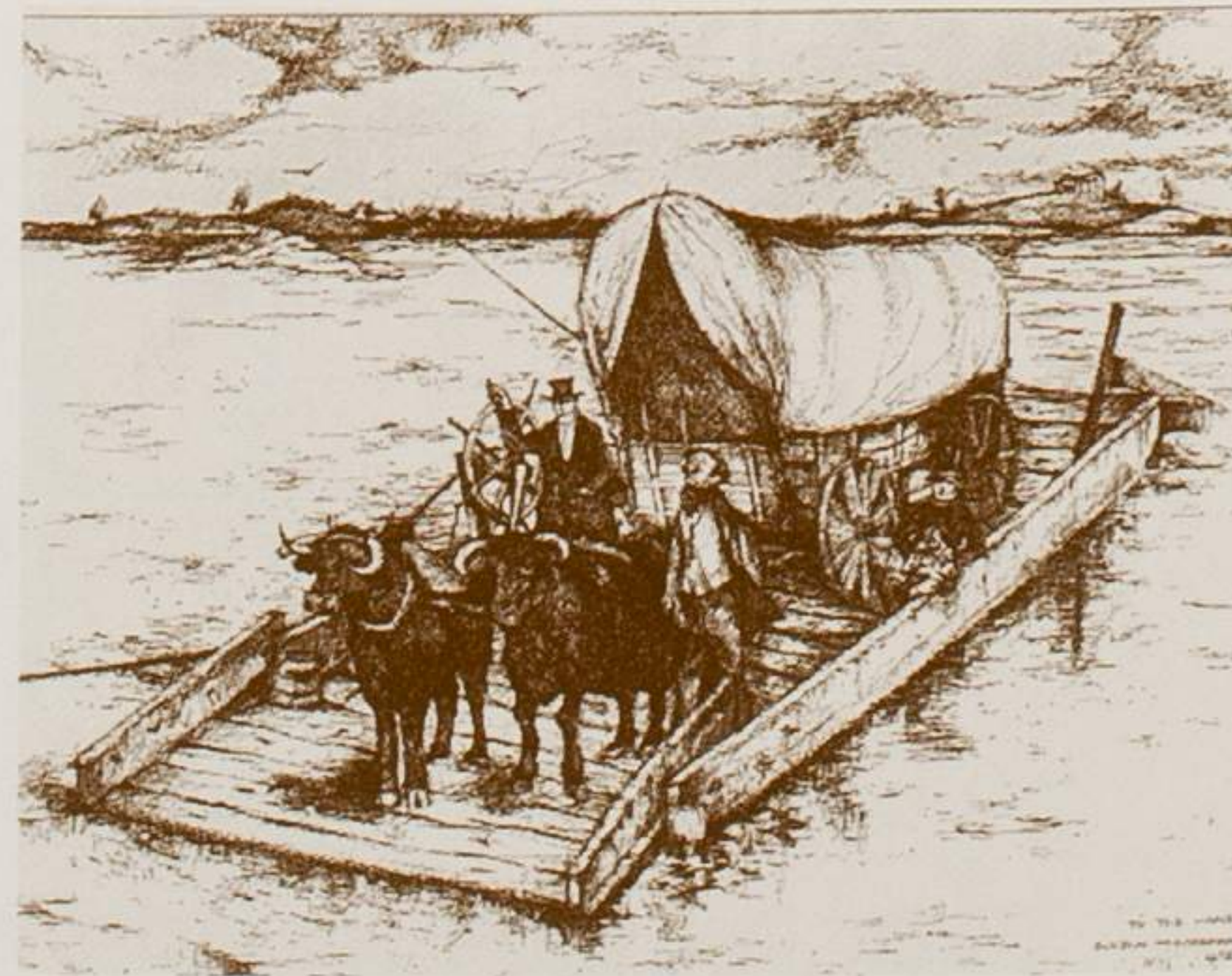
Tue-Sat, 10-5; Sun, 1-5. Escorted tours available.
Admission is free.

7. Grinter House

1420 S. 78th St., Kansas City, KS 66112
(913) 299-0373

Moses Grinter ran the first ferry across the Kansas River in 1831, used by trail travelers heading for California and Oregon in the 1840s and early 1850s. Tour Grinter's 1857 two-story southern colonial home overlooking the Kansas River. Interesting slide presentation features trail travel and Indian immigration.

Tue-Sat, 10-5;
Sun, 1-5. Escorted tours and slide programs available by request.
Admission:
Donations are requested.



8. Frontier Army Museum

Bldg. 80, Reynolds Ave., Fort Leavenworth, KS 66027
(913) 684-1719

Upon entering Fort Leavenworth, stop and see the magnificent Buffalo Soldier Monument, dedicated to the black troopers of the 9th and 10th Cavalry who helped protect the trails heading west. Starting at the museum, walk parts of the Santa Fe and Oregon Trails on a 2½ mile walking tour of the Main Post. View the largest collection of horse drawn vehicles in the country, including a carriage that Abraham Lincoln rode in while campaigning for the Presidency in 1859.

Mon-Fri, 9-4; Sat, 10-4; Sun, noon-4. Closed major holidays.
Escorted tours available by appointment.
Admission is free.

10. Mahaffie Farmstead and Stagecoach Stop

1100 Kansas City Rd., Olathe, KS 66061
(913) 782-6972

Relive the adventures of early stagecoach passengers at the first station for westbound travelers and today's only existing stagecoach stop on the Santa Fe Trail. Tour the Mahaffie House with its two-foot thick native limestone walls, and an icehouse and wood peg barn. Travelers ate their first meal on the trail here. Imagine the activity in the basement where food was prepared and served to a never-ending stream of weary stage passengers.

Sep-May: Mon-Fri;
Jun-Aug: Wed-Sun.
Call for hours. Closed January and all major holidays.
Guided tours available.

Admission: Adults-\$2.50 plus tax;
children age 3-11-\$1.50 plus tax;
children under 3, no charge.

11. Historical Marker

(denoting where the trails split)
Highway 56 and 183rd St.,
Gardner, KS

More than 200,000 travelers passed this point where the common route of the Santa Fe, Oregon and California Trails ended. Here the settlers headed northwest toward a new life in the rich, fertile Western United States. The traders and trappers headed southward toward the commercial center of Santa Fe.

12. Lanesfield School Historic Site

18745 S. Dillie Rd., Edgerton, KS 66021
(913) 893-6645

This restored one-room schoolhouse is the sole remaining structure in the ghost town of Lanesfield—once a mail stop along the Santa Fe Trail. Today it is a living history classroom. Join a school teacher dressed in period clothing. Take a guided tour into the past, and participate in hands-on activities. Stop at the Visitor's Center and see an exhibit on one-room school education. Relish the adjacent prairie restoration project, featuring walking trails with markers describing native grasses, and the Santa Fe Trail ford at Bull Creek.

Tue-Sun, 1-5.
Escorted tours available by appointment.
Admission is free.

