

I'm interested in 7/9/98
— Hist. of Nicodemus
(the bk.)

— a brochure on
the Traveling Exhibit

— info on the
Emancipation Celebration
— a brochure of other
programs, activities, etc.

Hilda Enoch

1500 El Dorado Dr.

Lawrence, KS 66047

785-842-6513

I'm a retired public
School teacher of History &
Eoc. Studies.

You are TERRIFIC!

her a question
you an answer in five
read what she's

Beware: Priscilla's a storyteller, so the answers may not be what you expect. If you want to write along with Priscilla, bring a pen. Paper will be available.

Java Dive • 10 E. 9th St • Lawrence • 843-3007



COMMUNICATIONS PROGRAMS SPECIALIST
CORPORATE RELATIONS CENTER



REC'D MAY 7 1998

TO	INIT	DATE
SUPT		
ADMN		
MAINT		
VEH/SM		
SEC		
BB/REL		
FILE/LIB		
ACTION TAKEN/DATE		

May 5, 1998

Steve Linderer
Fort Larned National Historical Site
Route 3
Larned KS 67750

Dear Mr. Linderer:

This letter is in response to our conversation regarding your upcoming dedication of the Nicodemus, Kansas National Historic Site on August 1, 1998. Because of the historic significance of your ceremony, employees of the United States Postal Service will be more than happy to assist by offering a special pictorial postmark commemorating the day.

I've include a copy of our pictorial cancellation guidelines so you will better understand how the postmark should be designed. My suggestion is to name the postmark - National Historical Site Station. The City, State and Zip Code line should read Nicodemus, KS 67625. Please keep in mind a simple line art design works best for a pictorial cancellation.

Because Nicodemus is now served by the Bogue, KS Post Office, your written letter of request for the postmark, along with camera ready artwork, should be submitted to the Postmaster of Bogue no later than May 29. This will allow enough time for the rubber stamps to be made and for us to properly announce the pictorial cancellation in postal publications. Please include as much detail as you can about the event, its specific location, hours of operation, etc.

As for a postal booth and it's hours of operation, you can coordinate our participation with the postmaster of Bogue, KS. Her name is Karen Walters and she can be reached by calling 785-674-2579. 421-2579

If you have any other questions or need further assistance, please feel free to give me a call.

Sincerely,

David Failor

cc: Karen Walters - Postmaster
Dan Taylor - Manager Post Office Operations

P O Box 66608
ST. LOUIS, MO 63166-6608
314-692-5504
FAX: 314-692-5500

PICTORIAL CANCELLATIONS AT TEMPORARY PHILATELIC STATIONS

The official regulations for establishing temporary postal stations and pictorial cancellations can be found in the DMM Transition Book or former DMM 160. The following guidelines will supply enough information to help lead you through the cancellation and related activities.

How do I get started? The sponsor of a significant event (stamp show, state fair, convention, etc.) requests in writing to the local postmaster that he/she authorize a pictorial cancellation. A temporary post office must be established in order to offer a pictorial cancellation. If additional work hours are required, approval must be obtained from your Manager, Post Office Operations. Although an event may run all day or for several days, the postmaster decides how long to have the temporary postal station open each day. For example, if the event is open to the public from 10:00 a.m. to 7:00 p.m., Friday through Sunday, the postmaster may decide to have the temporary station open only on Saturday from 10:00 a.m. to 4:00 p.m.

How far in advance should I request the cancellation? Ten weeks. The hand stamp itself does not take long to make, but in order to notify Headquarters of the intended cancellation, and allow them time to place it in the *Postal Bulletin*, a ten-week notice is required.

The sponsor wants to charge us to participate. The Postal Service will not pay any sponsoring organization to participate in the event. Postmasters may participate at events where admission fees are charged by the sponsor; however, in these cases the same cancellation used at the event must be available on request to those not paying to attend the event. Another solution would be to set up the temporary post office in an area at the event which may be visited by the public at no charge.

What's the first step after the sponsor's request? The postmaster requests approval for the event from the Manager, Post Office Operations in his/her area. Then, the sponsor's request, the postmaster's approval, and the camera-ready art work for the pictorial cancellation are submitted to your retail specialist.

What is "camera-ready" art work? "Camera-ready" artwork is black ink on white bond paper. Lettering must be typewritten, mechanically-produced or professionally hand-lettered. Avoid pencil drawings, too many "detail" lines, tiny figures, or too much black area to be inked. Look at a copy of the *Postal Bulletin* for some good ideas for cancellation art work and set-up.

Are there any prohibitions on what cancellations may be approved? Yes. Pictorial cancellations that endorse the ideals, policies, programs, products, campaigns, or candidates of to religious, anti-religious, commercial, political, fraternal, trade, labor, public-interest, or special-interest organizations may not be approved. However, cancellations may be approved that recognize events such as meetings or conventions sponsored by or involving such organizations, providing their designs do not include words, symbols, or illustrations referring to ideals, policies, programs, products, campaigns, or candidates. If there is a doubt, please contact your retail specialist.

What are the size requirements for the art work? Overall dimensions must not exceed four inches horizontally and two inches vertically.

Any other requirements? All cancellations must carry the name of the exhibition or event, followed by the word "Station" or "Sta.," the city, state, and ZIP Code (NOT the ZIP+4 Code). They must also include the month, day, and year of the cancellation.

Okay, I've received the request in writing, as well as the proper camera-ready artwork, where do I send it?

In Kansas:	Retail Specialist US Postal Service 7117 W. Harry St. Wichita KS 67276-9603	In Nebraska/Iowa:	Retail Specialist US Postal Service 5303 N. 91st Ave. Omaha NE 68134-9603
------------	--	-------------------	--

In a few weeks, you should expect to receive your hand stamp. Store it in a secure location, such as a safe or locked drawer.

The local newspaper wants to print the cancellation--is that okay? Yes. You should stamp a good, clear impression of the cancellation on a blank piece of paper, make a copy of it, and give the copy to the newspaper. When you receive your hand stamp, you will also get a poster depicting the cancellation that can be posted in your lobby or other appropriate areas.

What's the best way to make a good, clear cancellation? First, use a cloth or felt stamp pad. It should be well inked, but not over-inked. Place the hand stamp on the pad to ink it. Then, carefully position the device on the envelope or postcard, making certain that the stamp will be cancelled. It is not necessary--not even preferred, that a lot of the inked impression is on the postage stamp. Collectors like to be able to read the cancellation as well as still see the postage stamp. As you press the hand stamp on the item you are cancelling, you can gently but firmly roll the device, top to bottom, taking care not to touch the wooden edges of the device to the paper. The hand stamp should be re-inked after every cancellation. The more cancellations you do, the easier they will get. When you receive your hand stamp--PRACTICE!!

The announcement was in the Postal Bulletin and I'm starting to receive mail order requests from customers. You may apply the cancellation to the items you have received, but you cannot release them to any customers. Keep the cancelled items in a secure location. If you cancel the envelopes or cards each day you receive them, you will avoid the "rush" on the day of the event. Set aside a few minutes a day to apply the cancellations. If you do not have to hurry, you will do a better job and will have fewer requests for replacements after the cancellation is over. Remember, **DO NOT** release any cancellations to customers until the day of the cancellation.

Is there anything I should watch for while I'm honoring the cancellation requests? You should always ensure that whatever you are cancelling has the appropriate **First-Class postage** on it--either 32 cents or 20 cents, depending on if it is a one-ounce envelope or postcard. If a stamp for less than the appropriate amount has been affixed, you will need to ask the customer to apply additional postage, or in the case of a mail order request, return the envelope uncanceled and enclose a short note explaining why the requested service cannot be performed. If the customer remails the item with the additional postage, you should then honor their request.

Also check the postage stamp you are cancelling. If it was issued after the date on the hand stamp, do not cancel it!

Where do I offer the cancellation? It must not be offered as a regular service at your window. Set up a booth in the lobby, or on site at the event. If you set up at the event, be certain that security for the stamp stock and cash is adequate.

Is there any limit to the number of cancellations a customer can request? Yes. Except for the sponsor of the event, free hand stamping is limited to a maximum of 50 cancellations for any single individual or group. A special fee must be paid by anyone other than the sponsor for more than 50 cancellations. Written application for this service must be made in advance by the customer and authorized by:

GENERAL MANAGER
 PHILATELIC FULFILLMENT SERVICE CENTER
 8300 NE UNDERGROUND DR PILLAR 210
 KANSAS CITY MO 64144-9998

What do I do with the hand stamp after the cancellation is over? Keep the device for 30 days to fill any requests you receive through the mail. You should keep the stamp for another 30 days after that to honor any replacement requests. Then, return the stamp to:

In Kansas:	Retail Specialist	In Nebraska/Iowa:	Retail Specialist
	US Postal Service		US Postal Service
	7117 W. Harry St.		5303 N. 91st Ave.
	Wichita KS 67276-9603		Omaha NE 68134-9603

A replacement request is approved based on poor quality of the impression, damage to the envelope, or other similar defects. Envelopes marked on the back by letter-sorting machine code numbers as they moved through the mail system do not qualify for replacement. Customers who want their serviced item returned under protected cover should include a larger, stamped, self-addressed envelope.

The museum that sponsored the event wants to keep the hand stamp. Can that be allowed? To keep the hand stamp, the museum must submit a written request, advising that the hand stamp will be secured in a locked area. The written request from the sponsor as well as your approval should be sent to the retail specialist at the address above. The Inspection Service will be notified by copy of a letter to Headquarters requesting the museum be allowed to keep the cancellation device. The local postmaster is responsible for defacing the cancellation device in some manner, so it will never be able to appear as it was originally. Before turning the device over to the museum, an approval from Headquarters is required.

Have a great time! Events like this can boost your image in the community and can be a lot of fun, too!

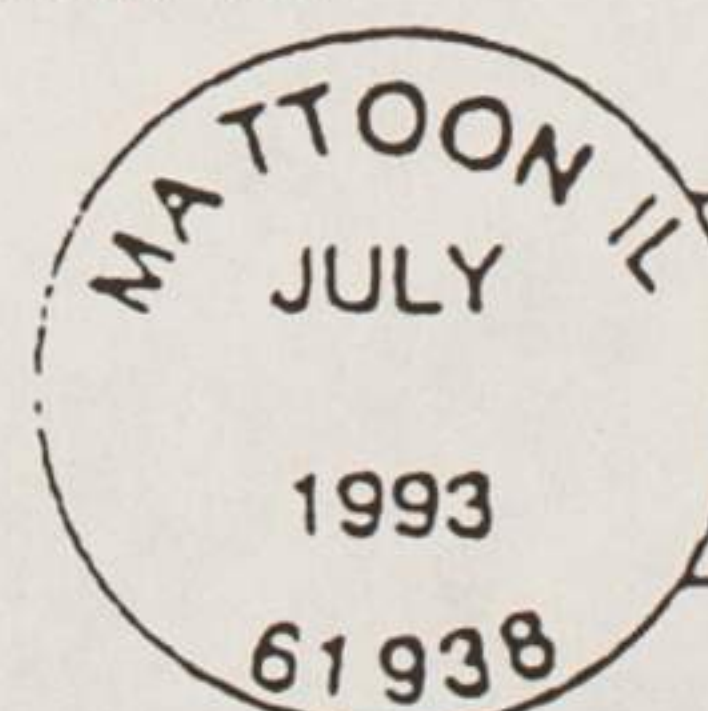
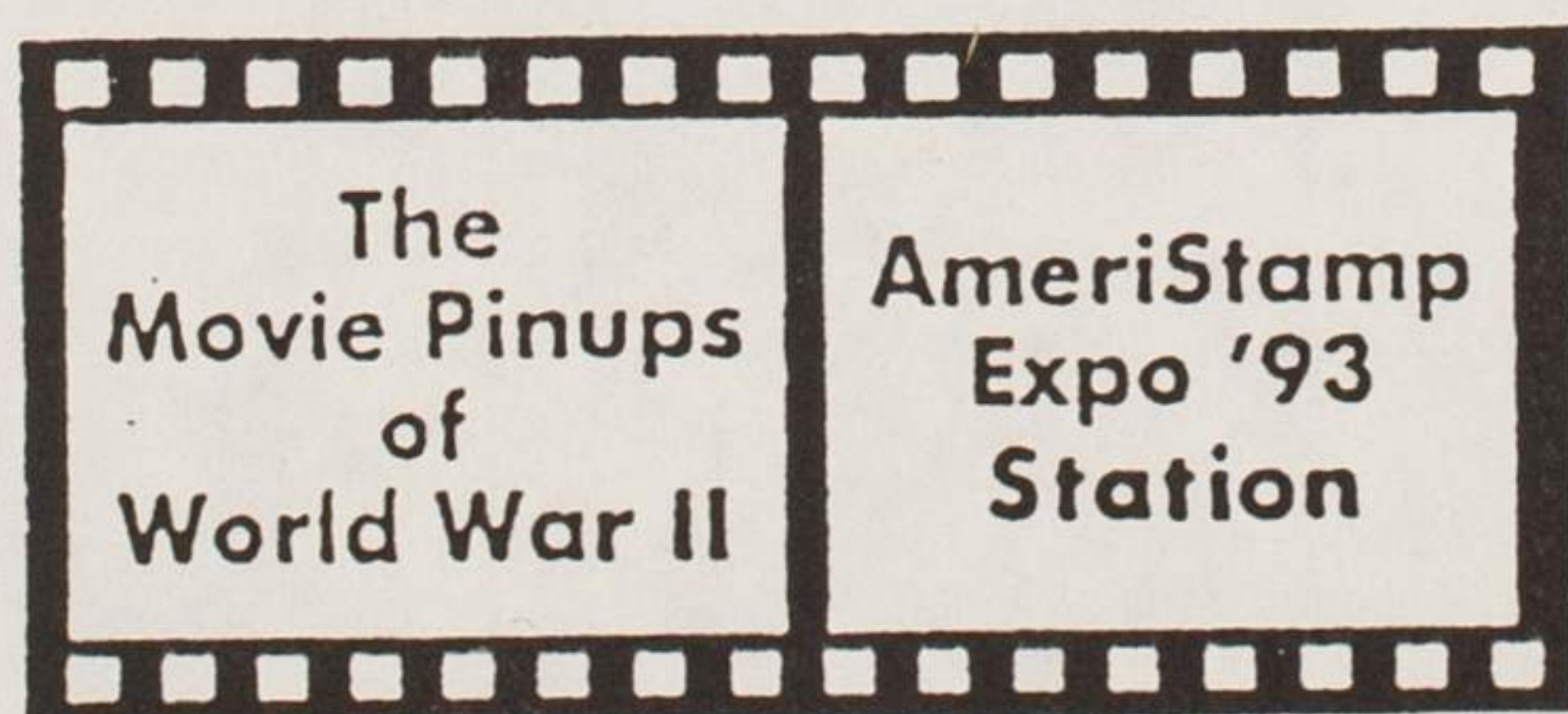
REQUIREMENTS FOR ARTWORK

All cancellations must carry the name of the exhibition or event (the name cannot be the name of the parent post office or any other post office within the state), followed by the word **Station** or **Sta.**, the city, state, and **five-digit ZIP Code** (do not include the **ZIP+4 add-on**), and the **month, day, and year**. Pictorial cancellations that endorse the ideals, policies, programs, products, campaigns, or candidates of religious, anti-religious, commercial, political, fraternal, trade, labor, public interest, or special interest organizations will not be approved. However, cancellations may be approved that recognize events such as meetings or conventions sponsored by or involving such organizations, providing their designs do not include words, symbols, or illustrations referring to ideals, policies, programs, products, campaigns, or candidates. For example, if a church was celebrating its 100th anniversary, a picture of the church building could be incorporated into the artwork for the handstamp. However, a crucifix, Bible, Star of David, etc. could not be approved as part of the artwork. If there is doubt as to whether a proposed cancellation meets these requirements, contact your Retail Specialist.

The size of the artwork should be no larger than 4 inches horizontally and 2 inches vertically. However, it is recommended from previous events that it is best to have handstamps produced in a size of **3-1/2 inches** horizontally and **1-1/2 inches** vertically. This prevents the cancellation mark from covering too much area on the article to be cancelled. This size also does not interfere with the address block.

The artwork must be camera-ready (black ink, slick paper) or on plain white bond paper with black ink. Lettering must be typewritten, mechanically produced or professionally hand lettered. This is very important because it allows the rubber stamp manufacturer to produce a quality handstamp.

SAMPLE CANCELLATIONS

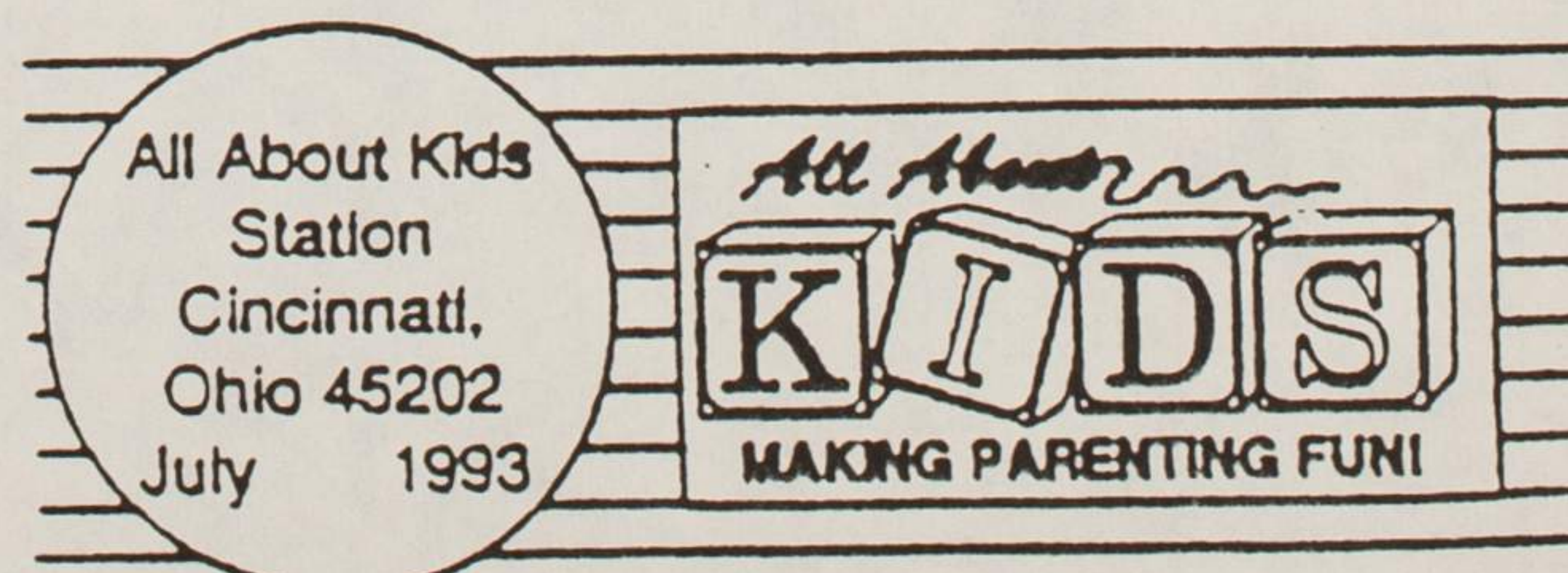


Bagelfest Station

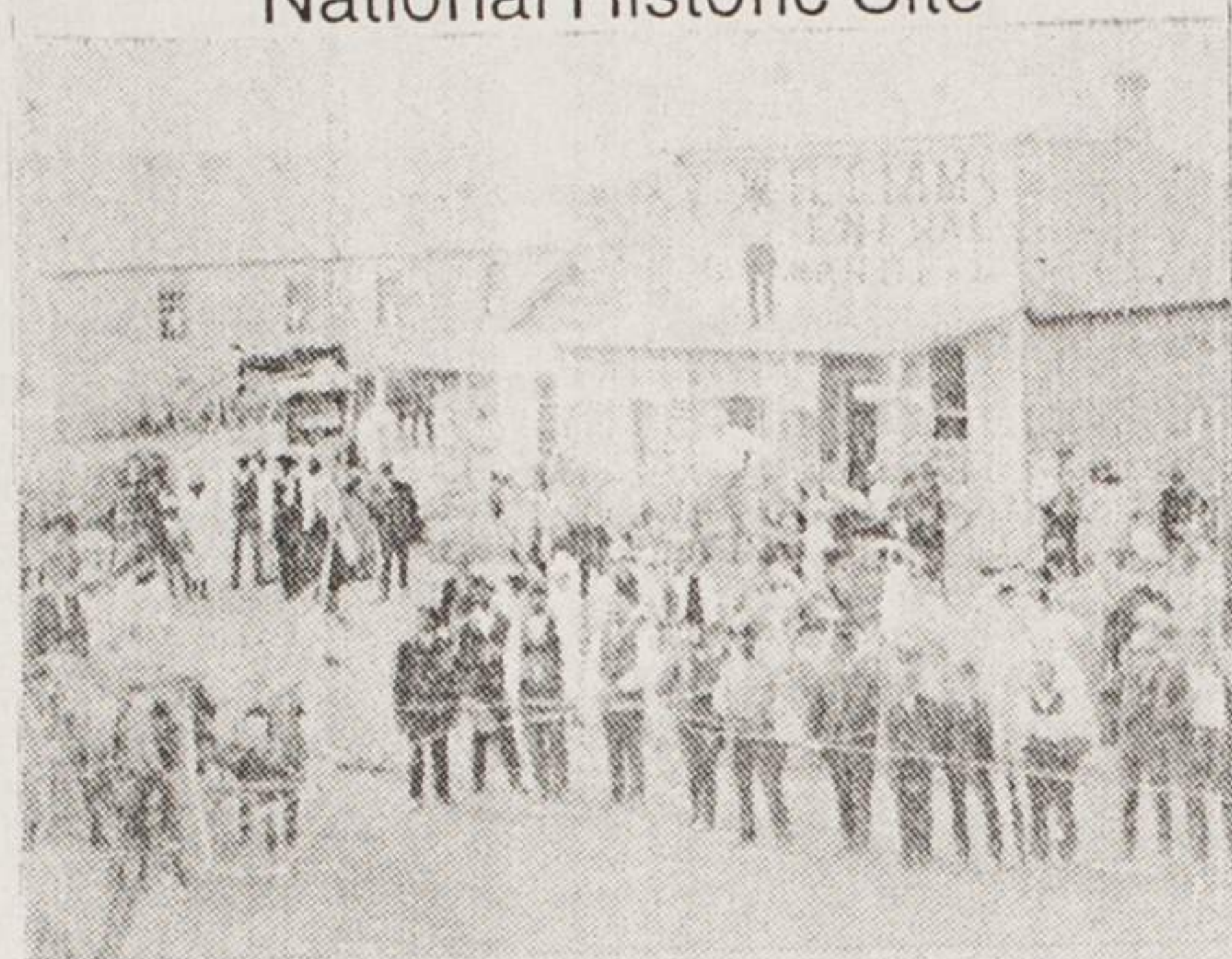


TOLEDO OH 43615
August 15, 1993

DRAVOSBURG, PA. 15034



NICODEMUS
National Historic Site



Emancipation Celebration ca. 1885

NICODEMUS
National Historic Site

All Colored People

THAT WANT TO

GO TO KANSAS,

On September 5th, 1877,

Can do so for \$5.00

IMMIGRATION.

Resolved, We the undersigned, do hereby certify that there is an

emancipation celebration to be held at Nicodemus, Kansas, on the 5th day of September, 1877, for the purpose of celebrating the anniversary of the signing of the Emancipation Proclamation.

Resolved, That we will do our utmost to bring about a gathering of all colored people of the United States, and to give the same the most favorable publicity, and to have the same held on the 5th day of September, 1877, at Nicodemus, Kansas, for the purpose of celebrating the anniversary of the signing of the Emancipation Proclamation.

Resolved, That we will do our utmost to bring about a gathering of all colored people of the United States, and to give the same the most favorable publicity, and to have the same held on the 5th day of September, 1877, at Nicodemus, Kansas, for the purpose of celebrating the anniversary of the signing of the Emancipation Proclamation.

Resolved, That we will do our utmost to bring about a gathering of all colored people of the United States, and to give the same the most favorable publicity, and to have the same held on the 5th day of September, 1877, at Nicodemus, Kansas, for the purpose of celebrating the anniversary of the signing of the Emancipation Proclamation.

Resolved, That we will do our utmost to bring about a gathering of all colored people of the United States, and to give the same the most favorable publicity, and to have the same held on the 5th day of September, 1877, at Nicodemus, Kansas, for the purpose of celebrating the anniversary of the signing of the Emancipation Proclamation.

**PLEASE READ PROOF CAREFULLY
AS WE CANNOT BE RESPONSIBLE
FOR ERRORS IN COMPOSITION
ONCE PROOF IS APPROVED.**

Approved By: _____ Date: _____

Dead line 29

* art work cost estimate
*

400 stamps Buff. Sdd.
"one of the first all AA. P.O."
\$1.00 - sell envelopes for.

Letter of Request

Art work estimate

Logo - NHS

Jim @ Print Shop
(785) - 625-4083

STAMP	•	3,330	
	•	20	(cancellation)
1,000 # small sheets	•	3,330	(4,330. →)
	•	3,330	
		<hr/>	
		10,000 cancellations	

post cards ^{3 1/2 x 5 1/2}	-	\$166.40
small envelopes	-	\$139.16
Large envelopes	-	\$142.88

1,000 stationary 5 1/2 x 8 1/2 \$55.65

casual forms - 888 - 302 - 6567
\$22

STAMP DISPLAY

• PHOTO OF POST MASTERS

- W. SAYER (GEORGE?) (19 - 19)
- E. BETH WILLIAMS (19 - 19)
- REV. JOE WILSON (19 - 1952)
- Emma Williams 19
- Zach Fletcher (1878 -

• PHOTOS OF POSTAL BUILDINGS

- FLETCHER HOUSE
- SAYER'S STORE
- WILLIAMS HOUSE
- JOE WILSON PLACE

- POST OFFICE NEWS PAPER
Featuring
Emma Williams

• POSTAL STAMP ENVELOPE

- LAST DAY
- POST CARDS

Ideas
for
items to
sell

Framed
Photo
w/ envelope
with pen

- Envelopes
- Post Card
- Packet #1
- Packet #2
- Framed

CASA  ELENA

ELENA S. METZGER
RURAL ROUTE 1, BOX 276, COUNCIL GROVE, KS 66846
(316) 767-5628
LANGUAGE SERVICES

28 May 1998

Ms. Angela Bates
The Nicodemus Historical Society
P.O.Box 139
Bogue, Kansas 67625

Dear Ms. Bates,

Please find enclosed twelve copies of a draft translation to your pamphlet on The Nicodemus Historical Society which you graciously sent, me.

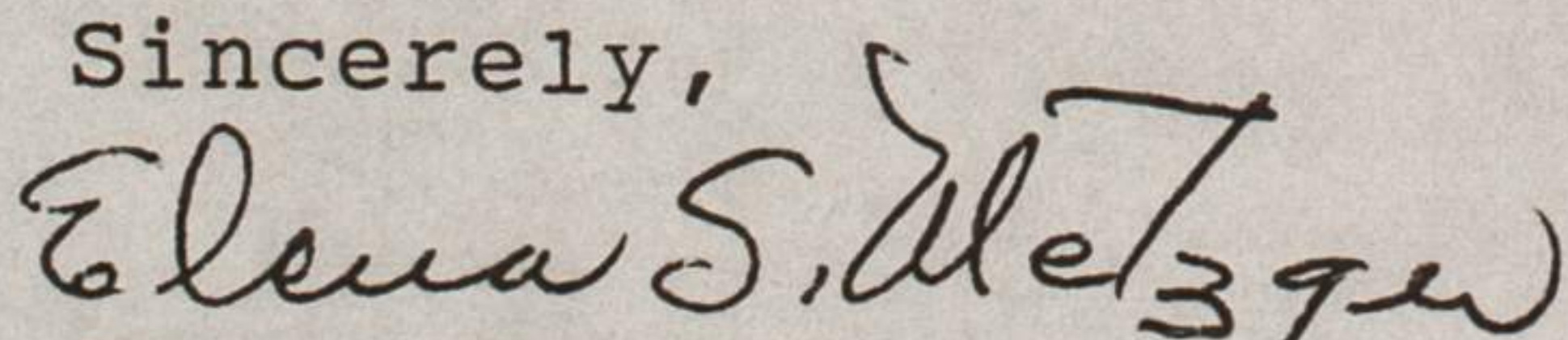
I am also enclosing the translation to your piece THE KANSAS AFRICAN AMERICAN HISTORY TRAIL which was included in one of the Kansas magazines some time back.

As you can see by the list of translations I am preparing #15 NATIVE AMERICANS, AFRO-AMERICANS AND HISPANICS IN THE STATE OF KANSAS which will include Nicodemus, Dunlap and Brown vs Kansas on segregation of schools.

Since I am waiting on my new computer I am preparing all this material in draft until I can publish part of my list.

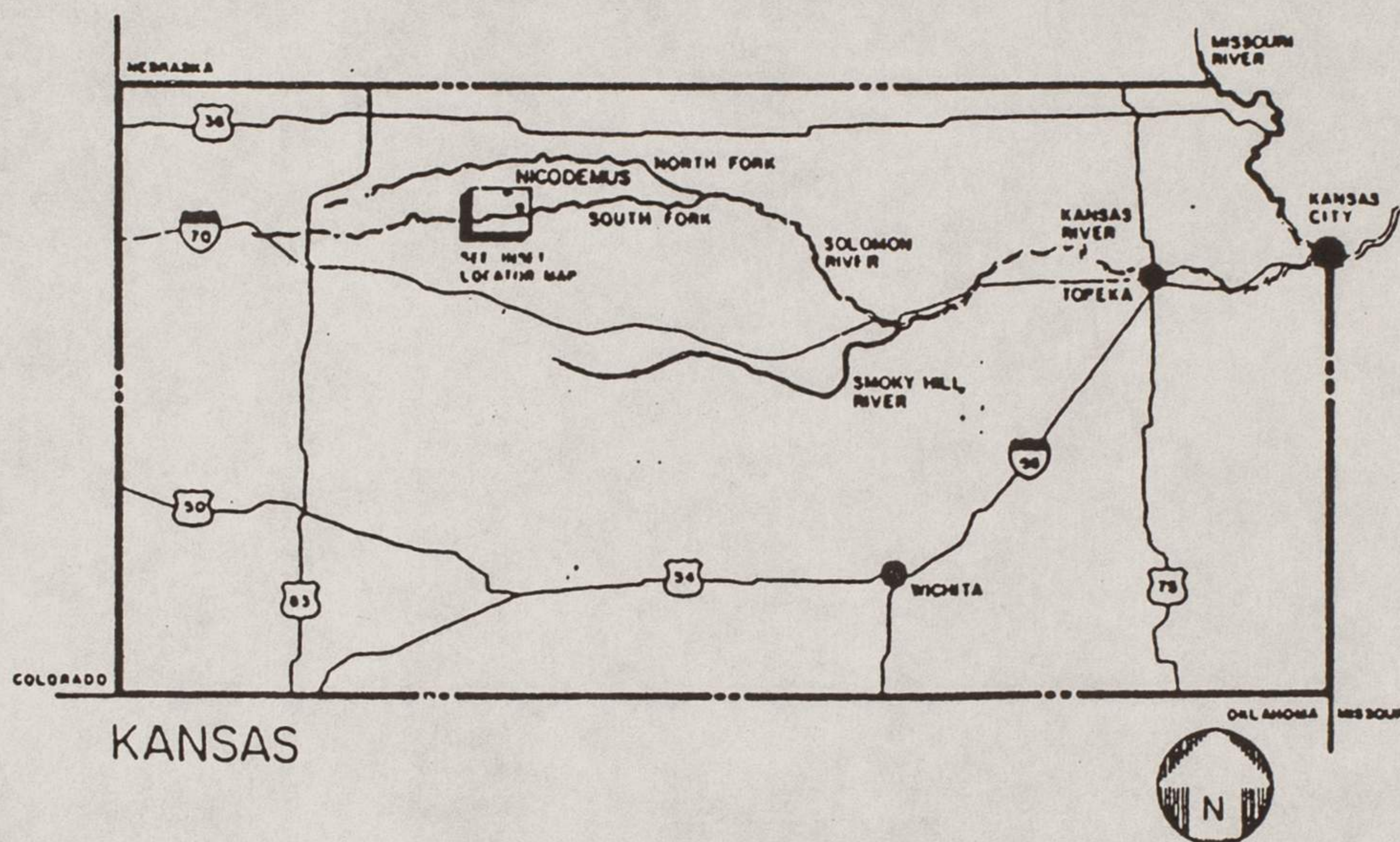
I am looking forward to visiting Nicodemus during your festivities.

Sincerely,


Elena S. Metzger

ENCL.

LA SOCIEDAD HISTORICA DE NICODEMUS



NICODEMUS, KANSAS

ALDEA TOTAL DE PIONEROS AFROAMERICANOS, MEXICANOS

Declarada en 1976 como Monumento Histórico Nacional

Para Preservar la Historia Fotográfica, Escrita,
Geneológica, y Arquitectónica de Nicodemus

EL MAS ANTIGUO EN EXISTENCIA PUEBLO PIONERO AFRO-AMERICANO

NOCODEMUS fue establecido en 1877. W.R.Hill un hombre blanco de Indiana y W.H. Smith un pionero negro, establecieron una sociedad que resultó en la organización de dos pueblos, Nicodemus y Hill City. En la primavera de 1877 Hill y Smith se aventuraron a ir a Topeka., Kansas en donde con otros cuatro hombres negros, organizaron la Compañía de la Ciudad de Nicodemus. Hill y el Reverendo Roundtree, uno de los miembros organizadores, viajaron a Lexington y Georgetown. Kentucky para convencer a negros a escapar la opresión del Sur emigrando a las "Tierras Prometidas" de Kansas en busca de verdadera libertad.

En setiembre de 1877 un grupo de alrededor de 300 negros de Kentucky fueron conducidos por tren luego a pie sobre terrenos hasta el asentamiento de Nicodemus, ubicado justo al norte del Rio Salomon. Este pueblo completamente de negros fue promocionado como la colonia negra mas grande en los Estados Unidos y fue ubicada en las altas planicies de Kansas en una zona no poblada en la parte noroeste del estado.

Estas personas de Kentucky al llegar encontraron un pueblo diferente a lo que habian conocido antes. Los pocos pobladores de Topeka que emigraron . antes en la primavera

vivian en casas de barro cavadas a una profundidad de 4 a 6 pies y eran de 14 x 15 de ancho. Muchos al ver esto regresaron a Kentucky. Muchos no tuvieron otra alternativa que quedarse y cavar para el invierno.

Durante ese primer año los pobladores casi se murieron de hambre. Sin embargo, los indios Osage y Pottowottami que cruzaban la zona despues de su cazería de invierno, compartieron su botin de cazeria con los pobladores hambrientos de Nicodemus. Durante la proxima primavera y otoño otros pobladores llegaron a Nicodemus.

A medida que el pueblo empezó a crecer se estableció un distrito de negocios con un banco, establos caballeriza de alquiler, varios hoteles, farmacia y tiendas, oficina de bienes raices y de abogados e incluso un consultorio médico. La población llegó a 700. Se establecieron tres escuelas para ofrecer instruccion educacional a tantos niños en el pueblo. El entrenamiento religioso era tan importante como el educacional. Los cuatro padres fundadores de Nicodemus eran ministros de varias iglesias establecidas para acomodar a tantas almas fatigadas de Nicodemus

En 1887 cuando las compañías ferroviarias Union Pacific y Missouri Pacific pararon de extender sus rieles por Nicodemus los negocios y la población empezó a irse. En 1888 La Union Pacific colocó rieles justo al sur del Río Salomón por entre las abiertas praderas. Un campamento ferroviaria empezó. Este campamento ferroviario se convirtió en el pueblo de Bogue y muchos de los negocios en Nicodemus se mudaron a ese lugar.

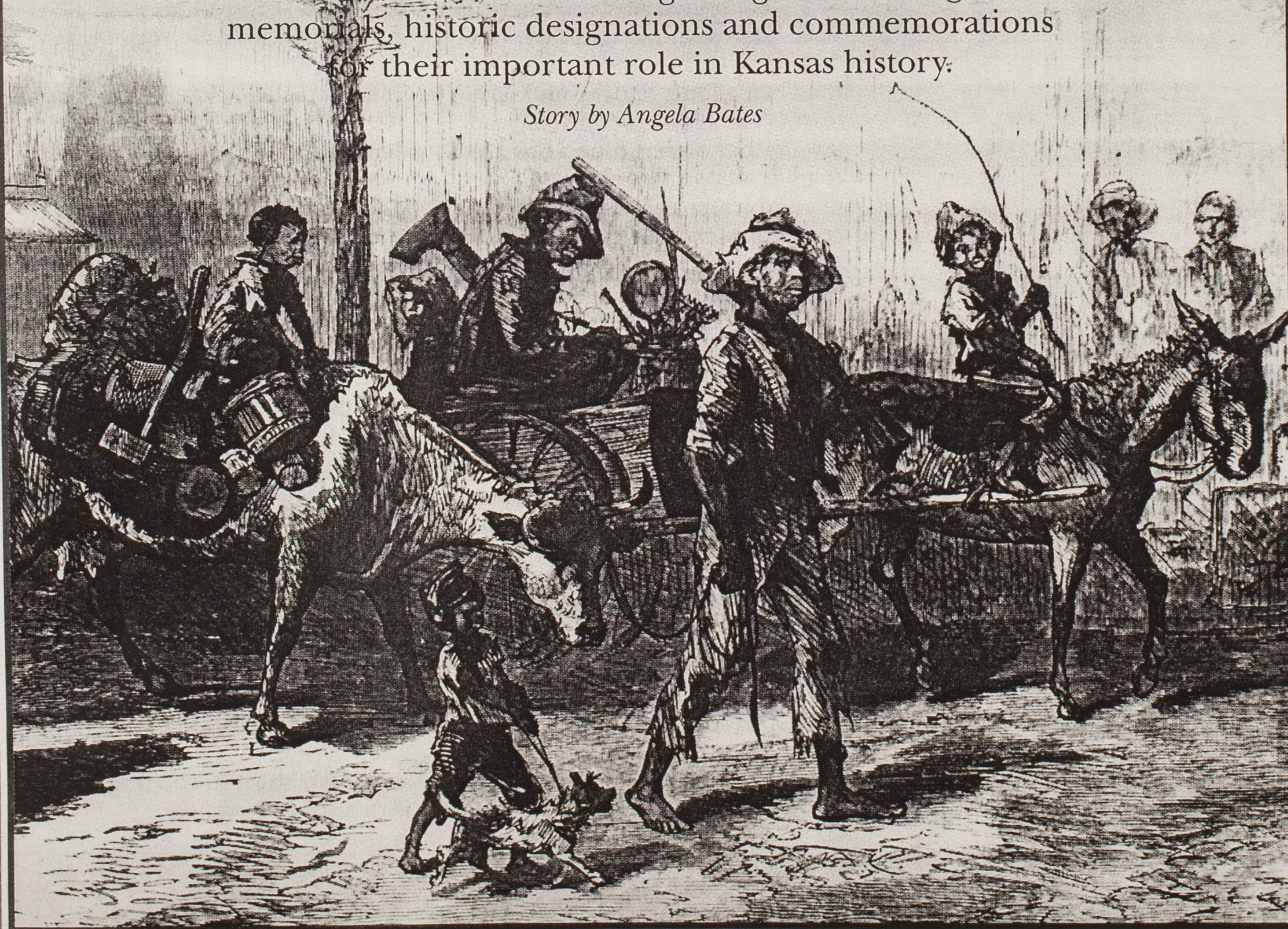
En años siguientes debido a la sequía, a las tormentas de polvo, la Gran Depresión y falta general de trabajo, Nicodemus continuo' perdiendo su población y negocios. Actualmente existen menos de 50 residentes en el pueblo.

En 1976 Nicodemus fue elevado a reconocimiento general cuando fue designado como Monumento Histórico Nacional. Actualmente se esta tratando de conseguir el status de Lugar Historico Nacional para Nicodemus. Si este status nacional se obtiene, Nicodemus se convertira en Parque Nacional. No solo las estructuras históricas que quedan serán restauradas y mantenidas, sino tambien toda la historia sera' interpretada por medio de programas accesibles al público en general.

THE KANSAS AFRICAN AMERICAN HISTORY TRAIL

African Americans began coming to the promised land of Kansas as early as the 1850's. They came — both freestaters and former slaves — to break virgin prairie sod and to build new homes. In doing so, they changed the color of the face of the Kansas frontier forever, joining white settlers and Native Americans in integrating the prairie. Their legacy of courage carried into the 20th century as Kansans spearheaded the effort to end segregation in America's public schools. African Americans are now being recognized through memorials, historic designations and commemorations for their important role in Kansas history:

Story by Angela Bates



This 1879 *Harpers Weekly* illustration, provided by the Kansas State Historical Society, depicts African Americans leaving the South for the free lands of Kansas.

EL SENDERO HISTORICO AFROAMERICANO EN KANSAS

Los Americanos Africanos empezaron a llegar a la prometida de Kansas como en los años de 1850. Vinieron - como liberados y antiguos esclavos - para cavar barro virgen de la pradera y para construir nuevos hogares. Al hacer ésto, cambiaron, para siempre, el color de la faz de la pradera de Kansas uniendose a los pobladores blancos y a los indios en la integración de la pradera. Su legado de coraje llevado hasta el siglo veinte como vanguardia de Kansas en el esfuerzo por terminar la segregación en los colegios públicos de los Estados Unidos. A los afroamericanos hoy se les está reconociendo por medio de monumentos, designaciones históricas y conmemoraciones por su papel importante en la historia de Kansas.

Autora Angela Bates

CASA  ELENA

ELENA S. METZGER
RURAL ROUTE 1, BOX 276, COUNCIL GROVE, KS 66846
(316) 767-5628

Ms. Metzger arrived in this country in 1949 to work for the United Nations in New York City. After the General Assembly she moved to Washington, D.C. where she joined the Food and Agriculture Organization of the United Nations until the organization moved to Rome, Italy. Ms. Metzger worked for the Spanish Embassy until 1954 when she joined the Organizatin of American States until 1956 when the U.S. Army transferred Mr. Metzger to the Fitzsimmons Army Hospital in Aurora, Colorado and then to Fort Sill, Oklahoma. She briefly worked in the General Hospital in Denver in a research study on the care of Hispanic senior citizens. In 1962, Ms. Metzger was asked to join a housing project under the Alliance for Progress at the OAS where she remained until 1965. During that year Ms. Metzger joined the Inter-American Defense College at Fort Lesley J. McNair in Washington, D.C. She remained in that position for ten years. For some years Ms. Metzger produced and directed the annual "Fiesta" commemorating Columbus Day. For this work and for her teaching of English to the wives of the Military Attaches, Ms. Metzger was awarded the "Bowl of Excellence." In 1975 Ms. Metzger left the IADC to do research for the book entitled "Women in the Armed Forces of Latin America." She studied at Georgetown University obtaining the Certificate of Proficiency in Translatin from the School of Languages and Linguistics. During the following years Ms. Metzger worked as a free lance translator/interpreter at the various international organizations in the Washington, D.C. area. In 1985 Mr. Metzger retired from his position at the Pentagon and the family moved to Florida and then to Kansas where Ms. Metzger engaged herself in importing products and crafts from her native Peru and from the rest of the Latin American countries. During the summer of 1987 she did research at the Library of Congress gathering material for a future work entitled "Rediscovering My Roots." She also worked as a translator in the Leadership Project for the Kissinger Commission on Central America at Georgetown University. Back in Kansas Ms. Metzger pursues her career as a Hispanic painter/artisan and she belongs to the following organizations:

National Hispanic Council on Aging, Washington, D.C.
Santa Fe Trail Association, Kansas
American Gourd Society, Inc., Ohio

Ms. Metzger is engaged in translating material on the Santa Fe Trail to be incorporated in a children's book to be published in English and Spanish. Ms. Metzger has finished translating "The Story of Father Padilla," "The Story of Matteo Boccacalini" and a collection of poems for children relating to Kansas. All her work is prepared in English and Spanish.

During 1992 Ms. Metzger spent six months in the state of Idaho translating, teaching Spanish and doing research. Back in Kansas Ms. Metzger has been very busy with the preparation of her book THE FOUR ELENAS - REDISCOVERING MY ROOTS which will be published in English and Spanish. Research for this book has been done in the Library of Congress, Washington, D.C. in the states of Kansas, Colorado, Oklahoma and Virginia and in Peru.

FAMILY - Husband - Michael F. Metzger - Retired Officer-USARMY
Retired Employee-US
GOVERNMENT

Daughters - Maria Elena - Virginia
Valerie Karen - Idaho

Sons - Vincent Eric - Virginia
Maurice Anthony - California
Julian Paul - USNAVY - Connecticut
Daniel Otis - Maryland
Gregory Albert - Kansas

CASA  ELENA

ELENA S. METZGER
RURAL ROUTE 1, BOX 276, COUNCIL GROVE, KS 66846
(316) 767-5628

Los logros de la carrera de la Sra. Metzger son variados como secretaria bilingüe/traductora. Al arribar a los Estados Unidos procedente del Peru en 1949, ella trabajó en las Naciones Unidas en Nueva York. Luego se trasladó a Washington, D.C. en donde trabajo para la Embajada de España, para la FAO (Food and Agriculture Organization of the United Nations) y luego se unió por un largo período a la Organización de Estados Americanos. Brevemente trabajo en el Hospital General en Denver, Colorado, realizando una investigación sobre el cuidado de pacientes hispanos en esa institución. De regreso a Washington, D.C, la Sra. Metzger se incorporo nuevamente a la OEA en donde trabajo en un proyecto de vivienda en Latinoamerica bajo la Alianza para el Progreso. En 1965 la Sra. Metzger pasó a la Junta Interamericana de Defensa en el Fuerte Lesley J. McNair en Washington, D.C. Por varios años la Sra. Metzger produjo y dirigió la "Fiesta" anual del "Dia de la Raza" y enseñó ingles a las esposas de los Agregados Militares asignados a sus respectivas embajadas por lo que se hizo merecedora al "Tasón de Plata al Merito" por su excelente servicio a la institucion. La Sra. Metzger curso estudios en la Universidad de Georgetown obteniendo el Certificado de Traductora del College of Languages and Linguistics. El resto de su tiempo lo ha dedicado a su familia y a servicios comunitarios como voluntaria en el Condado de Arlington, Virginia. Durante varios años visitó diferentes paises latinoamericanos para recopilar material para su trabajo de investigación intitulado "La Mujer Latinoamericana en las Fuerzas Armadas de Latinoamerica". La Sra. Metzger en sus ultimos años de residencia en Washington, D.C. trabajo en varias de las organizaciones internacionales del area. Al trasladarse al estado de Florida se dedicó a la importación de artesanías peruana y latinoamericana. Durante el verano de 1987 la Sra. Metzger trabajó como traductora en el Proyecto de Liderazgo de la Comision Kissinger sobre Latinoamerica en la Universidad de Georgetown y en sus momentos libres realizó investigaciones en la Biblioteca del Congreso reuniendo datos para su futuro trabajo intitulado "Redescubriendo Mis Raices". La Sra. Metzger ha traducido material sobre el Sendero a Santa Fe que será publicado en inglés y en español. Asimismo ha traducido La Historia del Padre Padilla, La Historia de Matteo Boccalini y una colección de poemas para niños. La Sra. Metzger pertenece a las siguientes organizaciones:

National Hispanic Council on Aging, Washington, D.C.
National Association for Hispanic Elderly, Los Angeles, CA
Association of Hispanic Arts, Inc., New York City
Santa Fe Trail Association, Kansas

Durante 1992 la Sra. Metzger pasó seis meses en el estado de Idaho traduciendo, enseñando español y realizando investigaciones. De vuelta en Kansas la Sra. Metzger ha estado bien ocupada con la preparacion de su libro LAS CUATRO ELENAS - REDESCUBRIENDO MIS RAICES que será publicado en ingles y en español. Las investigaciones para este libro se han efectuado en la Biblioteca del Congreso, Washington, D.C., en los estados de Kansas, Colorado, Oklahoma y Virginia y en el Peru, Chile y Bolivia.

FAMILIA - Esposo - Michael F. Metzger - Oficial Retirado de las FF.AA. de los EE.UU. y empleado retirado del Gobierno de los EE.UU

Hijas - Maria Elena - Caracas, Venezuela

Valerie Karen - Boise, Idaho

Hijos - Vincent Eric - Virginia

Maurice Anthony - San Francisco, CA

Julian Paul - Armada de los EE.UU.

Daniel Otis - Virginia

Gregory Albert - Kansas



ELENA S. METZGER
RURAL ROUTE 1, BOX 276, COUNCIL GROVE, KS 66846
(316) 767-5628

LANGUAGE SERVICES

1 May 1998

PUBLICATIONS READY OR BEING PREPARED FOR PUBLICATION

ALL PUBLICATIONS PRODUCED BY CASA ELENA ARE PUBLISHED
IN ENGLISH AND SPANISH

1. A Mother's thoughts - Poems
2. Children's Poems
3. Gourds - Translation
4. Women in the Armed Forces of Latin America*
5. The Story of Father Padilla - Translation
6. The Story of Matteo Boccalini - Translation
7. HISTORY OF PERU*
8. The Buffalo Hunters - Translation
9. The Santa Fe Trail - Translation
10. Pawnee Hero Stories * Folk Tales*- Translation
11. The War of the Pacific*
12. Sioux Stories - Translation
13. Adventures in Idaho History - Translation
14. Exodusters - Translation
15. Native Americans, African Americans and
Hispanics in Kansas*
16. Preparation, Materials Sources and Sale of Crafts*

*Being Prepared

Los afroamericanos empezaron a llegar a la tierra



ELENA S. METZGER
RURAL ROUTE 1, BOX 276, COUNCIL GROVE, KS 66846
(316) 767-5628
LANGUAGE SERVICES

Rates for Casa Elena work:

SPANISH :

Book proposal consultation : \$75 per hour or flatrate 100-2-
- depending on number of pages in book.

Editing : \$50 per hour.

Proofreading : \$3 per page.

Rewriting : \$50 per hour.

Translating : \$25 per hour or \$125 per 1,000 English words.

Translating - technical : \$50 per hour or \$150 per 1,000 English
words.

Research : \$50 per hour.



September 18, 1998

Ms. Angela Bates-Tompkins
907 Hummingbird
Bogue, KS

Dear Ms Tompkins :

On Sunday, September 6 Rosetta Robinson was featured with the Steve Miller K.C. Band at the Logan, Ks Labor Day Celebration. Some people who heard her perform recommended she apply to you to be considered for your "Emancipation Celebration".

She has a magnificent voice for various styles including gospel and jazz.

Please let us know if you would be interested in her performing for you.

Thank you.

Sincerely,

Steve Miller

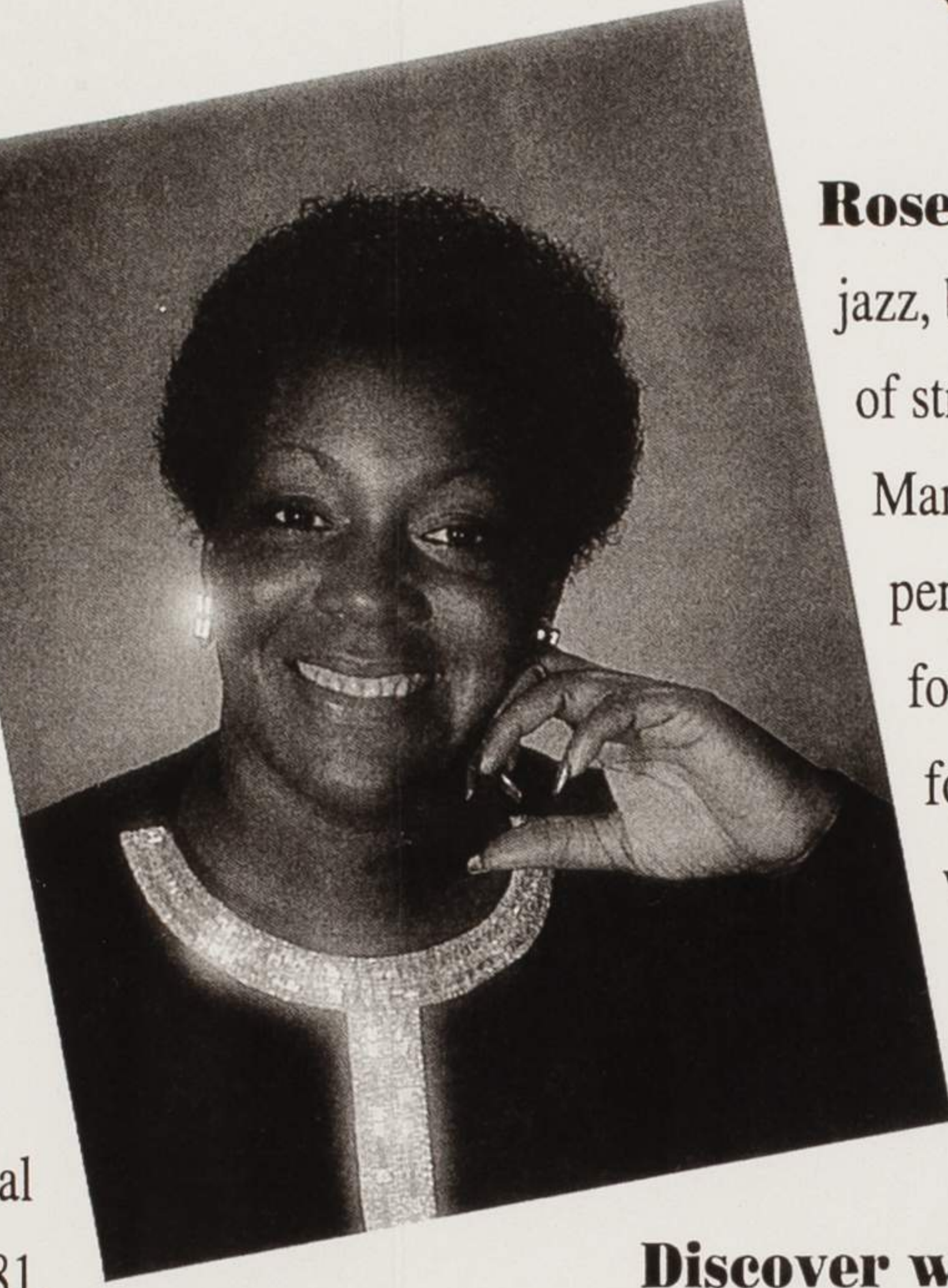


Rosetta!

A Jewel of Jazz

Nobody can sing it like *Rosetta!* can

Rosetta Robinson, who has been compared to Ella Fitzgerald, Etta James, and Aretha Franklin by professional musicians who have worked with her, is one of the brightest singing talents in the Midwest. She's been a featured vocalist in "Jazz Times" with the Steve Miller K.C. Band, and can often be heard at the Starlight Roof of the Kansas City Club and at the Hyatt Regency Crown Center. She regularly appears on the Variety Club Telethon, singing with Ben Vereen. Her voice has been described as "big, warm, and moving."



Rosetta's unique voice can handle virtually any type of music — popular, jazz, blues, gospel — with amazing results. Following in the tradition of strong Kansas City female vocalists, such as Oleta Adams and Marilyn Maye, Rosetta pours everything she has into her performances, yet she always leaves her audiences begging for more whether doing a floor show or singing with the band for dancing, Rosetta captivates an audience with the warmth of her voice and personality. Such words as *beautiful*, *amazing* and *powerful* are often used to describe her voice, but words alone do not do her justice — you must hear Rosetta for yourself!

Rosetta grew up singing in a church choir in Poplar Bluff, Missouri, with her father and sisters. By the age of 12, her talents were so special that she became the featured singer in her family. In 1981, Rosetta came to Kansas City, where she quickly made a name for herself in the highly competitive and demanding music industry. According to one music expert, Rosetta is "gospel, blues, and jazz all wrapped into one."

Discover why Rosetta Robinson is not only a crowd pleaser but a crowd dazzler! Call 913-722-0887 today for a cassette or video tape of Rosetta's performance, or for more information on booking her for your club or event.

**"One of Kansas City's
best kept secrets"**

Bill Grigsby
K.C. Radio Personality

"A marvelous singer"

Dick Wright
Noted Jazz Historian

"A Jewel of Jazz"

Laura Rollins Hockaday *The Kansas City Star*

Rosetta!

**"One of the most powerful,
moving voices discovered
in the last 20 years
in the Midwest"**

Dr. Ned Smull
Jazz Aficionado

**"I'm looking forward to
performing with Rosetta again
in our next year's tour"**

Doc Severinson
with the "Tonight Show Band"



Rosetta!

RECENT BOOKINGS

Doc Severinsen and "The Tonight Show Band"
Maryville, Missouri

Bartle Hall Grand Opening Gala, featured with Lou Rawls

Missouri River Festival of the Arts, Boonville, Missouri

EXPO, Seville, Spain with The Steve Miller KC Band

Variety Club Telethon with Ben Vereen

Glenn Miller Festival, Clarinda, Iowa

"The Broadway Beat" Show, Ritz-Carlton, Kansas City

Shakespeare Festival, Westin Crown Center, Kansas City

"Jazz Times" Show, Johnson Co. Community College,
Overland Park, Kansas

Botar Ball, Westin Crown Center, Kansas City

National Hotel-Motel Owners Convention,
Marriott Downtown Hotel, Kansas City

Rozelle Court, Nelson-Atkins Museum of Art, Kansas City

Kansas City Club / River Club / Carriage Club

Kansas City Country Club / Oakwood Country Club

*For more information about
Rosetta Robinson contact:*

Steve Miller

Steve Miller Entertainment Agency

9907 W. 70th Terrace

Shawnee Mission, Kansas 66203

(913) 722-0887



Steve Miller Orchestras
&
Entertainment Agency
(913) 722-0887
9907 W. 70th Terr. • Shawnee Mission, KS 66203

Ms. Angela Bates-Tompkins
907 Hummingbird
Bogue, Ks. *67625*

Tilden Manufacturing, Inc.
229 Lowland Rd.
Hamburg, PA 19526



Nicodemus Historical Society
Attn: Angela Thompkins
P.O. Box 139
Bogue, Ks 67625

TILDEN

MANUFACTURING, INC.

CUSTOM BRONZE AND ALUMINUM

PLAQUES AND MARKERS

Unsurpassed quality...

Old style method combined

with modern technology

for an individual touch

from start to finish.



NAME PLATES

GERALD CLEMENS

JAMES VASTINE

YOUR NAME HERE

These bronze name plates fit perfectly with any office decor. They can include company logos or custom art for a personal touch. The artists will design a plate that fits your personal image. The standard size is 2" x 10" and with the additional logo or art, the size is 2" x 12".

ADDRESS AND DOOR MARKERS



Address markers can be made of bronze or aluminum. The marker is created to fit the mail box post or porch column. They are available in any amount of numbers and can be horizontal or vertical.



CUSTOM PLAQUES

BERLIN RAILROAD STATION
• HAS BEEN PLACED ON THE •
NATIONAL REGISTER
OF HISTORIC PLACES
BY THE UNITED STATES
DEPARTMENT OF THE INTERIOR
• BUILT 1856 •

Custom plaques are available in any size which can be produced in bronze or aluminum. These plaques are made to withstand the seasonal changes in weather and are long lasting. These plaques commemorate past events which took place at the sites.

Tilden Manufacturing, Inc. is proud to be owned and operated by a family with five generations of metalcasting experience. Tilden Manufacturing provides services nationwide to historical societies, large and small businesses and also individuals. This family owned and operated business puts their individual touch on the products from start to finish.

The modern technology that is used is complimented by their old style techniques. For custom bronze and aluminum plaques, Tilden Manufacturing provides a high quality product, excellent service and delivery nationwide for their customers.

**229 Lowland Rd.
Hamburg, PA 19526
Phone/Fax 610-562-4682
or 1-888-267-9550**

Tilden Manufacturing, Inc.
229 Lowland Rd.
Hamburg, PA 19526

TILDEN

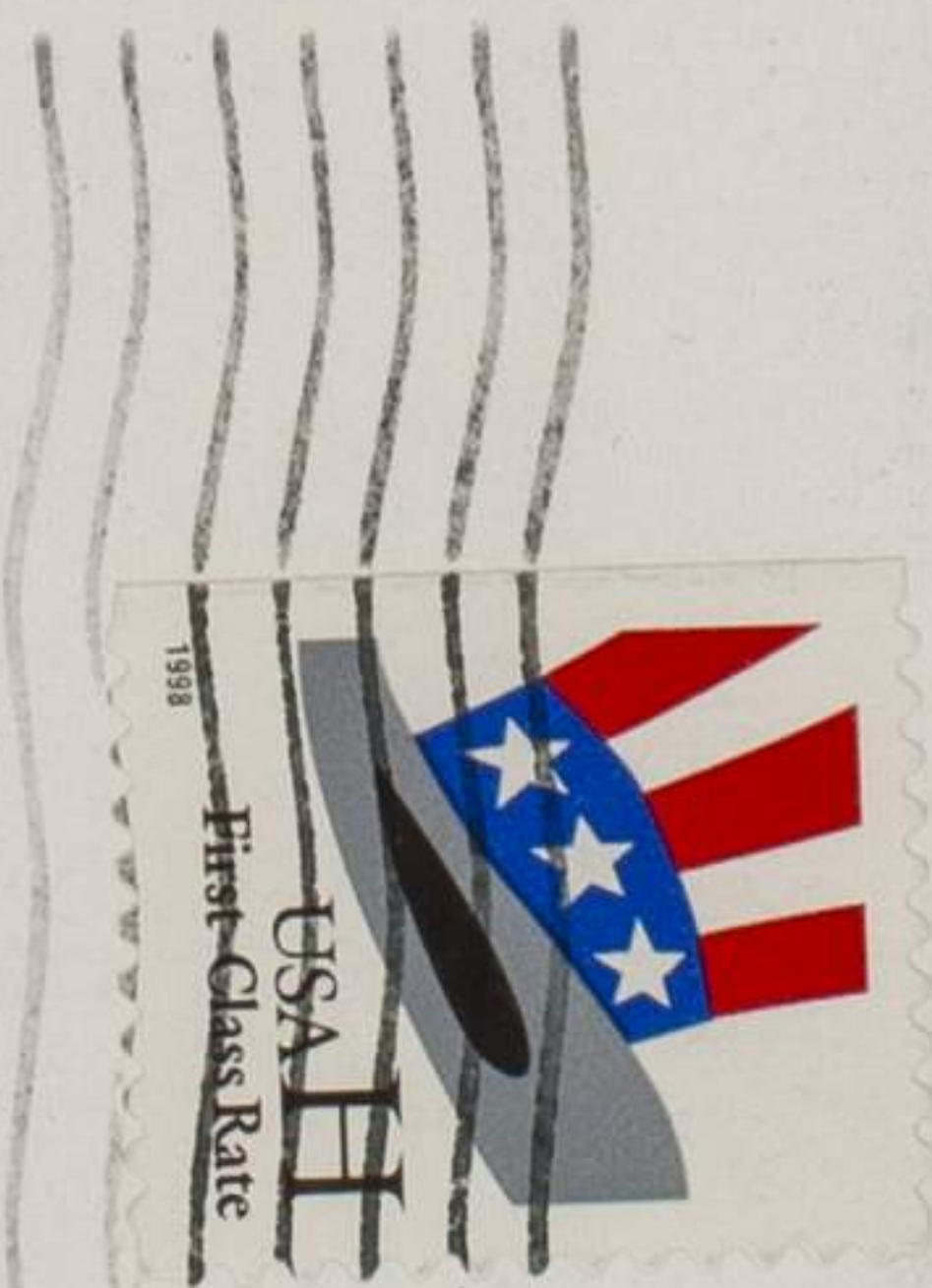
MANUFACTURING, INC.

CUSTOM BRONZE AND ALUMINUM
PLAQUES AND MARKERS

*Unsurpassed quality...
Old style method combined
with modern technology
for an individual touch
from start to finish.*



*Nicolomina Historical Society
Attn: Angela Thompson
P.O. Box 139
Burgess, Ks 67625*



Tilden Manufacturing Inc.
 229 Lowland Road
 Hamburg, PA 19526
 Phone/Fax 1-888-267-9550

NAMEPLATES- for desk (with solid cast feet) or for walls or doors without feet(2 holes for mounting)

DP-1- approx. 2" x 10" (up to 18 characters)\$40.00 @ Cast Bronze

DP-2: approx. 2" x 12" (up to 23 characters)\$45.00 @ Cast Bronze

DP-2L: DP-2 with logo (up to 18 characters)\$50.00 @ MINIMUM ORDER OF
 10 PLATES W/LOGOS

Many company logos can be reproduced, along with
 stock logos such as sports etc.

ADDRESS MARKERS -vertical rectangles with 4" high numbers

	BRONZE	ALUMINUM
AM-2: 2 digit marker approx. 3 1/2" x 10"	\$55.00	\$45.00
AM-3: 3 digit marker approx. 3 1/2" x 15"	\$75.00	\$60.00
AM-4: 4 digit marker approx. 3 1/2" x 20"	\$95.00	\$80.00
AM-5: 5 digit marker approx. 3 1/2" x 24"	\$120.00	\$100.00

other shapes and sizes available by request

DOOR MARKERS- excellent for house doors, office doors, hotel room doors etc. (Cast Bronze)

3" x 5" oval - \$25.00	3" circle- \$21.00	3" x 5" rectangle- \$25.00
5" x 7" oval - \$37.50	4" circle- \$28.00	5" x 7" rectangle- \$37.50
	6" circle- \$42.00	

Custom shapes and sizes available by quotation

CUSTOM PLAQUES- all types of bronze plaques available including National Register plaques. Our customers include Historical Societies, cities and towns, schools, libraries, architects, churches and individual home owners. Prices are based on size of plaque, complexity of design, and number of letters in the text.

Tilden Manufacturing Inc.
229 Lowland Road
Hamburg, PA. 19526
Phone/ Fax 1-888-267-9550

Pricelist- prices effective July 1, 1997

#100 NATIONAL REGISTER - standard with DATE (approx. 10 1/2" x 7")	Cast alum. \$70.00 Cast bronze \$80.00
#121 NATIONAL REGISTER- standard with DATE (approx. 14" x 9 1/2")	Cast alum. \$120.00 Cast bronze \$140.00
#101 NATIONAL REGISTER- standard w/out date (approx. 10 1/2" x 7")	Cast alum. \$65.00 Cast bronze \$75.00
#123 NATIONAL REGISTER- standard w/out date (approx. 14" x 9 1/2")	Cast alum. \$110.00 Cast bronze \$130.00
#106 NATIONAL REGISTER- standard with NAME and DATE (approx. 10 1/2" x 8")	Cast alum. \$90.00 Cast bronze \$100.00
#122 NATIONAL REGISTER- standard with NAME and DATE (approx. 14" x 10")	Cast alum. \$140.00 Cast bronze \$160.00
#125 NATIONAL REGISTER- standard with NAME and DATE (approx. 15" x 12")	Cast alum. \$180.00 Cast bronze \$210.00
#124 NATIONAL REGISTER- CUSTOM wording and size	Priced by quotation

CUSTOM PLAQUES-we can make any size, shape, or style plaque containing most standard text styles, logos, or designs by using the photo engraving process. Custom plaque prices start at \$1.40 per square inch for bronze and rise according to complexity and uniqueness of design. (price starts at \$1.25/ sq. inch for aluminum). All custom plaques will be priced by quotation.

Terms- Check with order, or Visa/Mastercard number and exp. date.

Prices include hardware for normal mounting, and standard delivery charges (UPS ground). Street address must be included.

Please allow **4 to 6 weeks** for delivery.

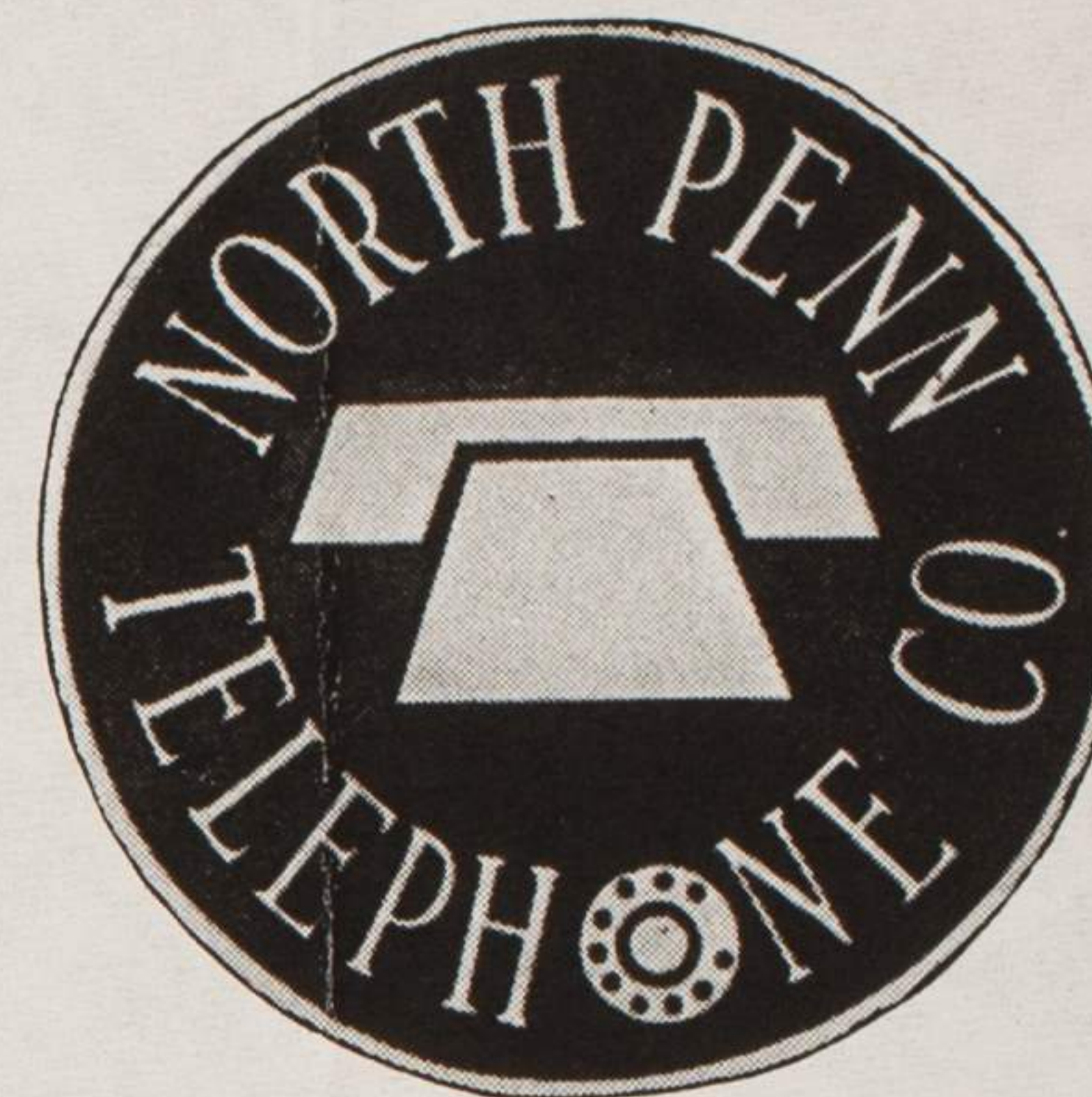
Large quantity orders can be invoiced -Net 30.



#121 - 14" X 9 1/2", 1" and 5/8" letters
#100 - 10 1/2" x 7", 3/4" and 3/8" letters



#101 - 10 1/2" x 6 1/4"
#123 - 14" x 8 1/2", same as #100 less date



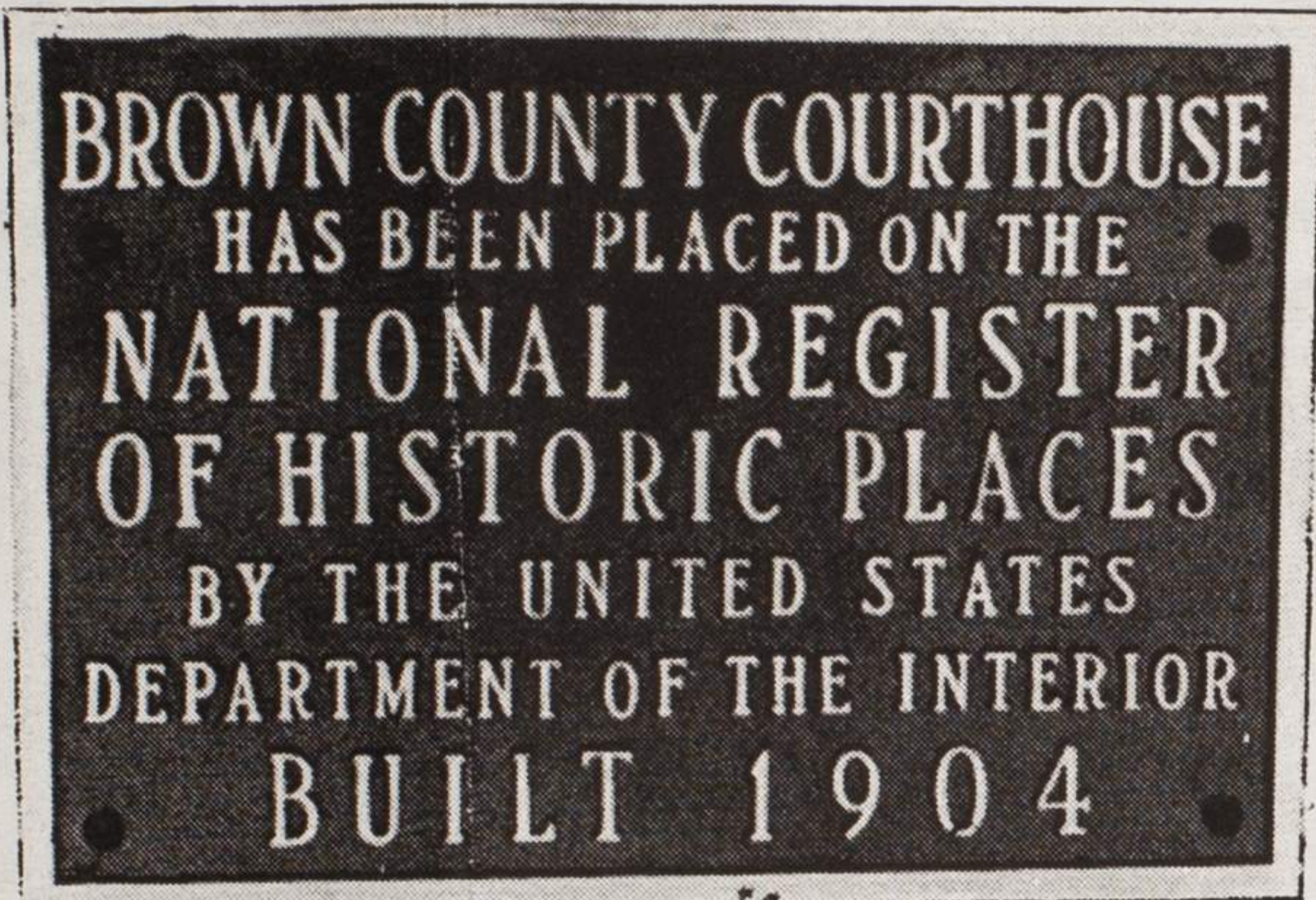
#174c - 12" diameter, 2" letters and logo



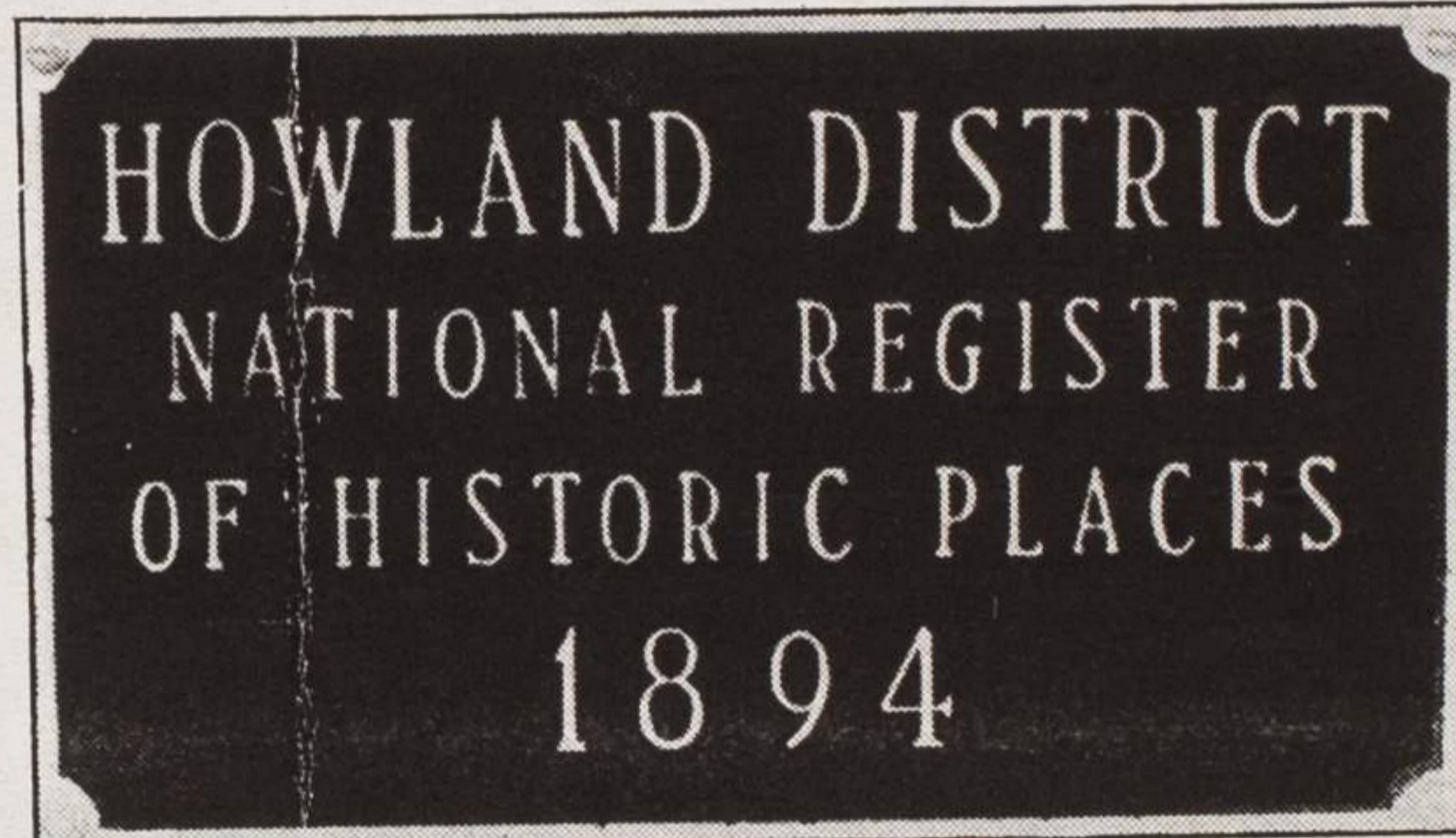
#168c - 14" x 6", 3/4" and 5/8" letters



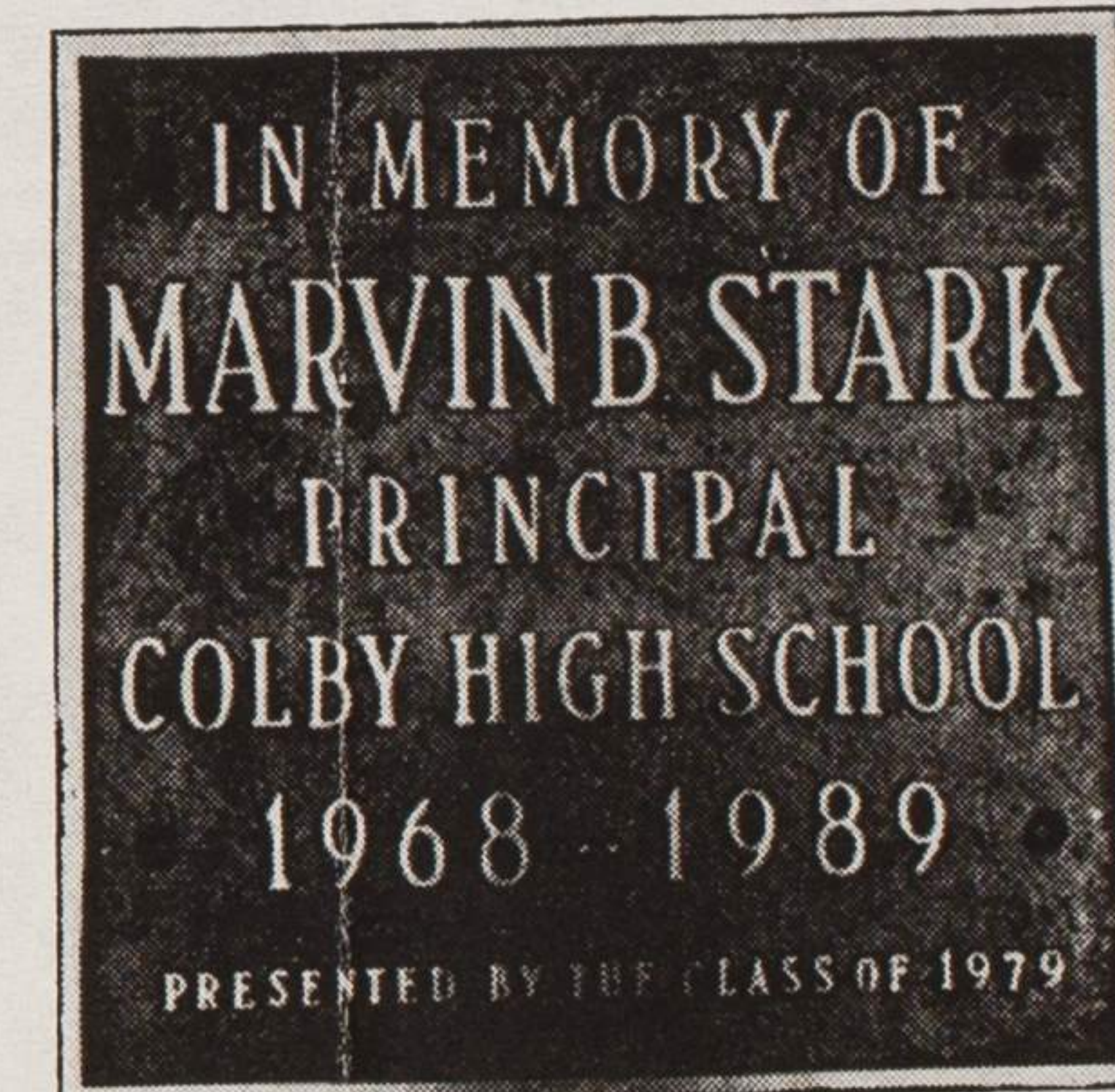
#130c - 10 1/2" x 7" 1", 5/8", 3/8" and 1 1/2" letters



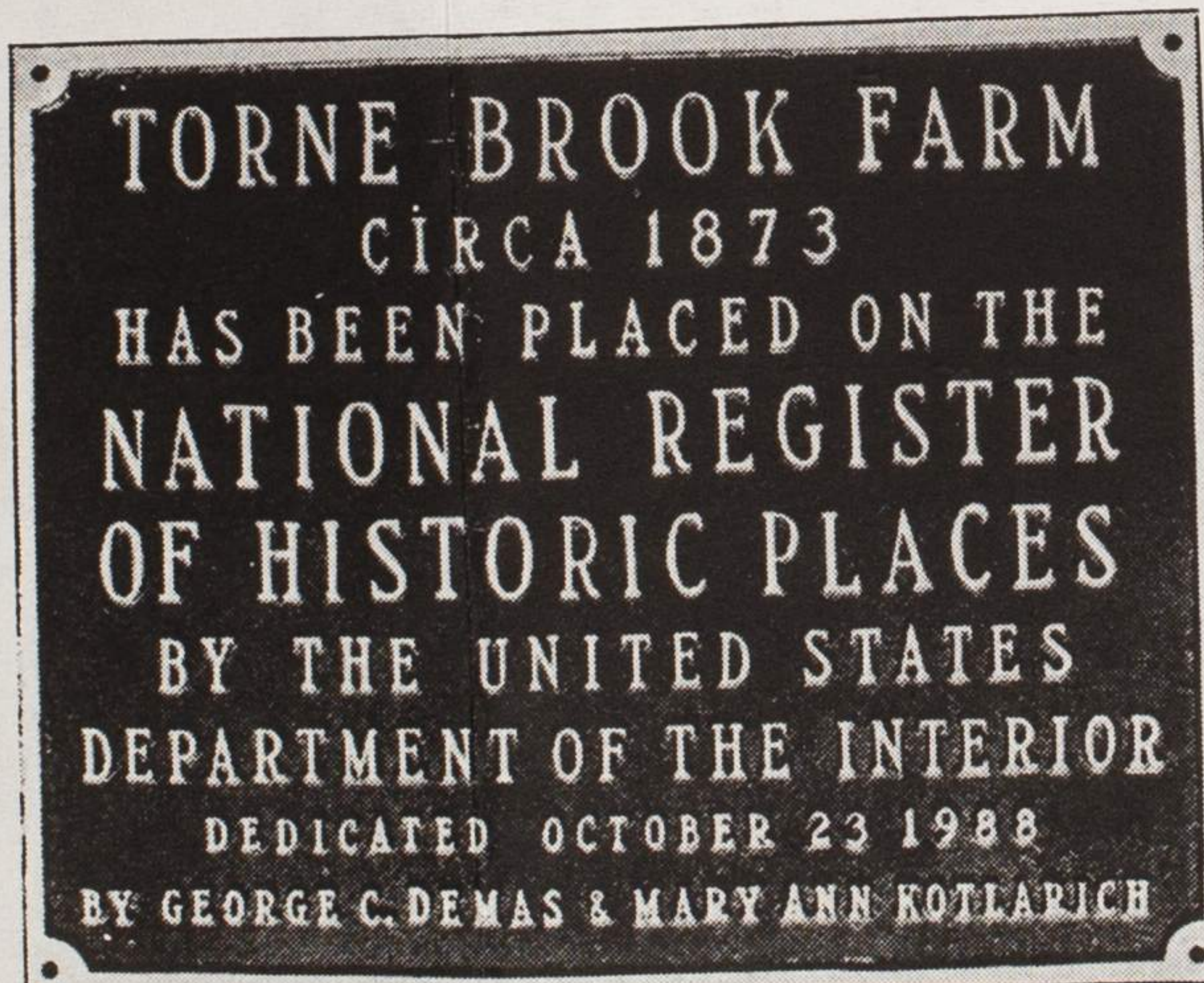
#122 - 14" x 10", 1" and 5/8" letters
#106 - 10 1/2" x 8", 3/4" and 3/8" letters



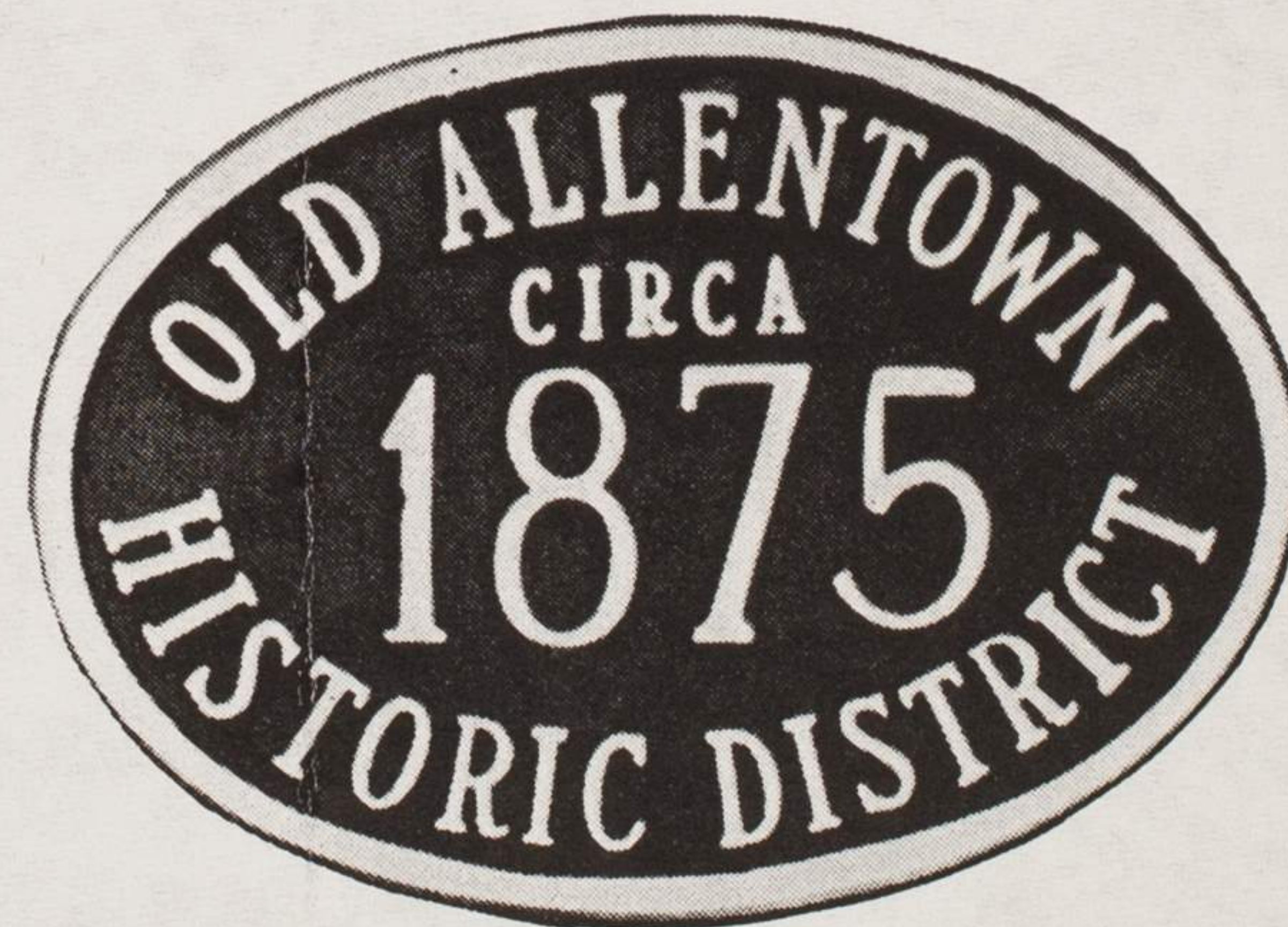
#140c - 12" x 7", 1" and 3/4" letters



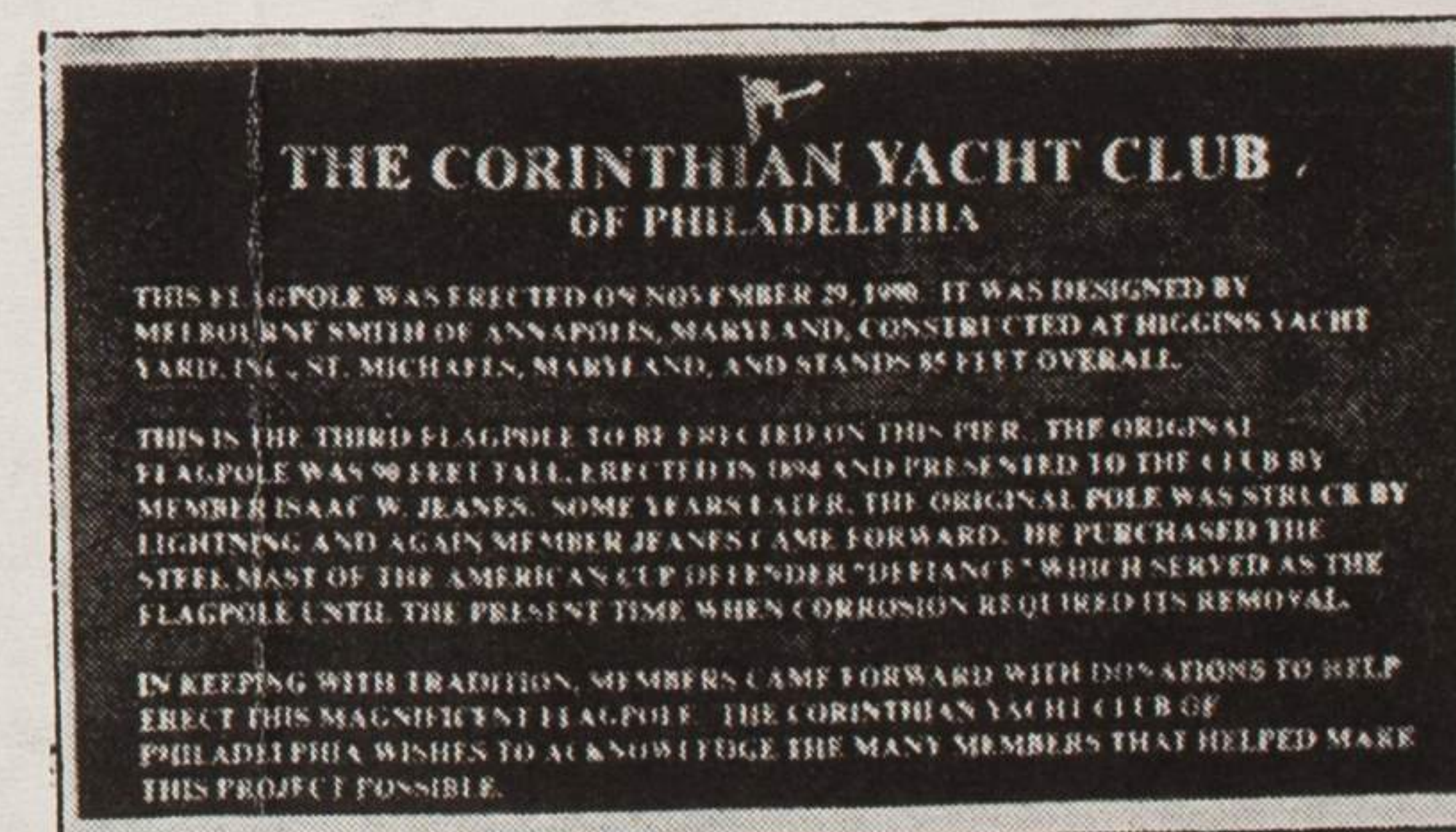
#155 - 12" x 15" 1 1/2", 1" and 3/8" letters



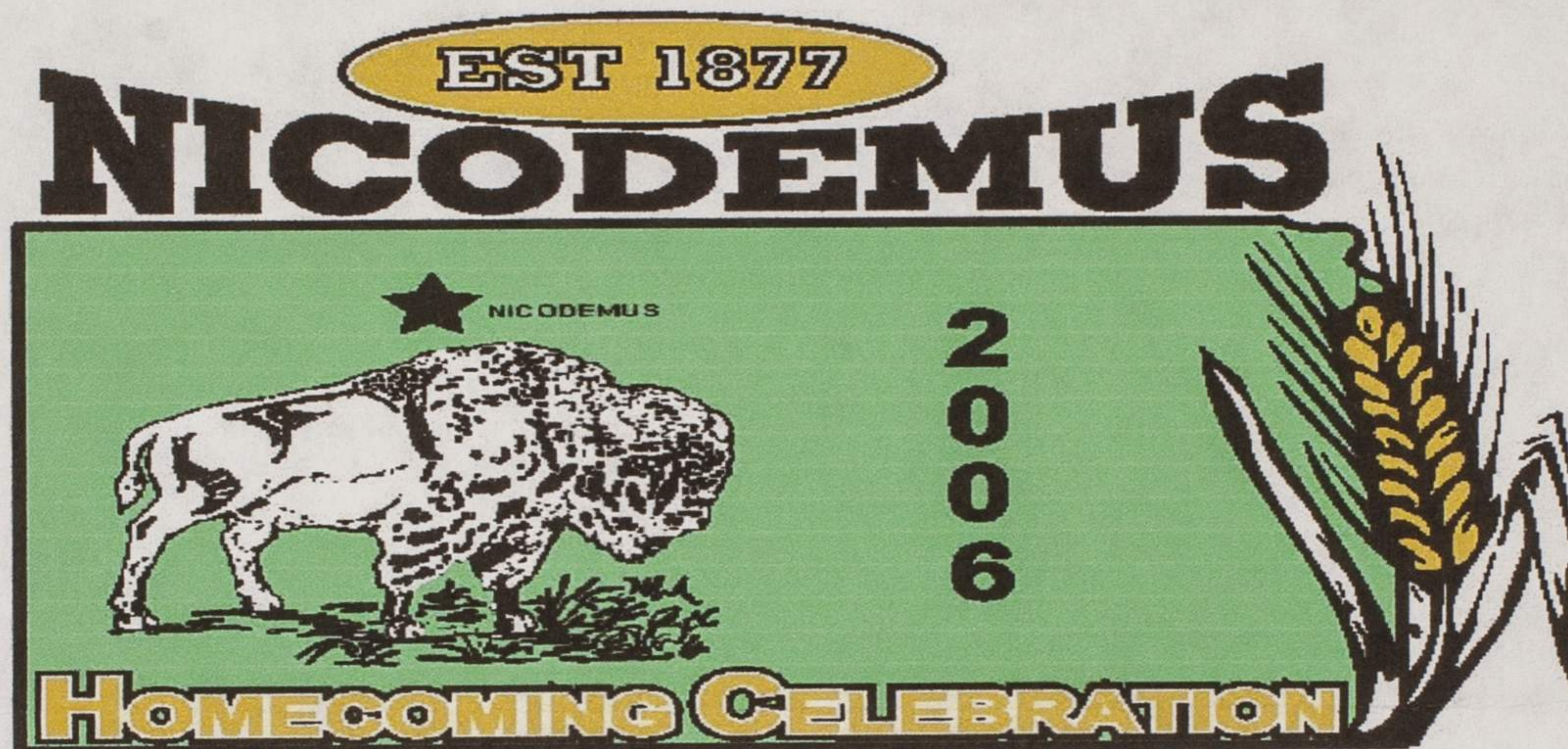
#124 - 14" x 11", 1", 5/8" and 3/8" letters



#132c - 7" x 5" oval, 1 1/2", 5/8" and 3/8" letters



#167c - 10" x 19" - Photo Engraved Pattern



August 12, 2006

Angela Bates
PO Box
Bogue KS 67625

Dear Angela:

There was major confusion about the 'KU pole' and the fact that it had been changed to accommodate one of the vendors at your recent jazz festival. Perhaps you would help clear up this confusion with an explanation of why the power was changed -- especially without obtaining permission from anyone.

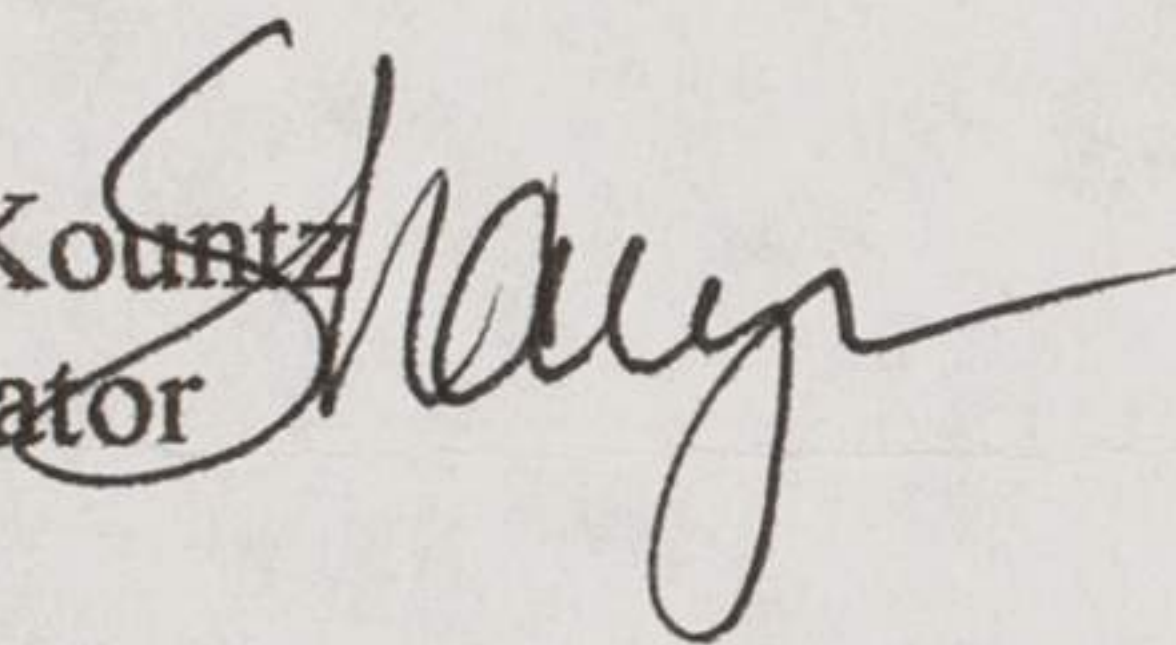
It seems that pole has been used by KU since they started coming out to homecoming. It was wired especially for their particular needs and was labeled 'KU' on the electrical box. Therefore, when they arrived this year, they just pulled whatever wires weren't right and hooked up. Agreed, this was not the proper way to handle the situation; but that is what was done. Then when the gentleman from Stockton (who we are told paid to have the power changed to his own specs for the jazz festival) arrived, he was livid!

An emergency call was put into Sherm who at first was NOT willing to come out and do the necessary work. Only the persistent begging by Robert Alexander got him to come 'fix' the problems. Had he not come on such short notice, we were looking at a lawsuit by the Stockton gentleman for loss of his frozen items because of the lack of electricity. And those who were dealing with the problem were confident that he was not just bluffing!!

So, there you have it. The homecoming group has not received a bill from Sherm yet; but he has estimated that it will be in the neighborhood of at least \$250. Those in attendance at the 'final report' meeting felt that you should at least share this cost since you authorized the Stockton gentleman to make the change on the KU pole and the homecoming group, the township, nor NPS was aware of the change and would not have authorized such a change.

Thanks and please respond at your earliest convenience.

Sharyn Kountz
Coordinator

A handwritten signature in cursive script, appearing to read "Sharyn", written over the typed name and title.

August 18, 2006

Dear Homecoming Committee:

I am in receipt of your letter regarding problems with providing electricity to a vendor during homecoming. First I want to state *I* was not involved with vendors for homecoming. It was the responsibility of those who coordinated with vendors, not mine, to provide vendors with their specific electrical needs, location, etc. And, I am not responsible for any bill incurred to provide electricity to a vendor!

I talked with Gary, the vendor you are referring to in your letter. He informed me that he did not get his vendors form back to the committee until July 25 or 26 because his initial form and check that he sent back in June could not be found by Alvena. He put a stop payment on the June check and sent a new one with the form when he received it on Tuesday, July 25th. He immediately put it back in the mail and it should have gotten to the committee the next day July 26th. *Was this time enough for his electrical needs to be assessed and coordinated?*

Again, I was NOT in charge! I did not determine where he or any vendor was to set up, or what their electrical needs were. I cannot be responsible for the lack of coordination by those in charge. I think communication between the vendor and the homecoming vendor coordinators, the time frame for meeting his electrical needs, and where he was going to be located was the problem. Had he been located in a different spot, and arrangements made prior to him arriving, this problem would have never occurred.

What I arranged in June for the Jazz Festival has nothing to do with homecoming, however, what I did arrange for *WAS approved and coordinated with the Township Board*. I talked with Sharyn two weeks before the jazz festival and discussed the electrical needs for this same vendor. His electrical need for the jazz fest was a 220 electrical outlet. I called Sharyn and discussed that there were no 220 outlets on the poles. We discussed that it would make sense to put in at least two permanent ones, on two different poles. Prairie Land Electric had suggested after discussing the many electrical outlets on the other poles, that the center pole in the park and the pole where KU has their electrical box would work for adding an 220 outlet. I told Sharyn that I would like it put on the KU pole because I didn't want the vendor located in the center of the park where people would be sitting, and she agreed that I could have it installed on the KU pole by the road. I told her that I had talked with Brian Newell of Damar and he said he was available to come out and install it. She gave me permission to coordinate with him to do it. I told her I was only going to coordinate with him putting in just that one, and she would have to make arrangements for the second one to be installed on the center pole, and she said she would see about getting the other one installed. I specifically asked who should the bill be sent to, and she said the *Township Board*. That is what I instructed Brian Newell to do.

Regarding the KU pole – Prairie Land Electric as well as Brian Newell said that to install an the electrical outlet on the pole where KU hooks up would not interfere with their hook up at all, because it would be used separately and with its own meter. I'm not an electrician and this is what they told me and Brian did. When the festival was over I had the meter removed. When I called KU the other day to inquire about this issue, I was informed that they didn't have a problem, except they had to installed another type of outlet for the new vehicle they brought because they did not bring the big van that they usually bring.

Regarding Sherman – I cannot blame him for wanting to charge an extra fee to come and do work on the day of the event – rather than making arrangements prior to the event, however, if he charges \$250 *to move* an electrical outlet from one pole to another (I heard that is what he did) then this truly seems extreme. I was told by Brian Newell if he had been in the area that day he would have *moved* it for \$60 at the most! Anything wrong with this picture?

Lastly, I am appalled that Sharyn can make the statement in the first paragraph of her letter stating that....”- especially without obtaining permission from anyone.” If Sharyn’s memory fails her regarding all of this, then, I don’t know what to say, other than ask - Do we need to resort to getting all conversations and verbal agreements in writing!

Respectfully,

Angela Bates



-KIDS -

Bring Your Parents and

COME AND HELP PICK OUT

Our  for the Nicodemus Community

**SUNDAY
DECEMBER 3rd**
(leaving right after church)

**SUNDAY
DECEMBER 3rd**
(leaving right after church)



AN EXPERIENCE TO REMEMBER

*Angela, Sherda, Tommy & Gil with our
2005 Xmas Tree*

WE NEED YOUR HELP THIS YEAR!!!!

Hot Cider & Hot Chocolate Provided



Lynn & Karla Davignon, Owners

Route 2, Box 86, Ellis, KS 67637

(785)726-3480

pdellpin@gbta.net

November 18 to
December 17, 2006

CLOSED THANKSGIVING DAY

Monday-Friday 3:00-5:30

Saturday & Sunday 10:00-5:30

FRIDAY, NOV. 24 10:00-5:30

**PRAIRIE DELL PINES, LLC, invites your family to
.....CONTINUE THE TRADITION!**

We would like to invite you to Prairie Dell Pines for another fun filled excursion to find your 'special' Christmas tree! Lots are mowed; trees sheared, hot chocolate and cider are waiting!!!

2006 will be our 6th Christmas Season here at Prairie Dell Pines! Our first trees planted in 2001, have made noticeable progress over the past year. Shearing and shaping of these young trees was done for the first time this summer, and they look great! We hope to open this new lot in 2008!

This season trees will be available for choose and cut selection in the existing north tree lot. Should you not find your perfect tree, pre-cut 6-8' Kansas grown Christmas trees will be available in the barn.

Fresh Scotch Pine wreaths of various sizes, door swags, candy cane and cross wreaths will be made daily. If you would like to pre-order, please call or e-mail and we will have your order ready. Garland will also be available on a pre-order basis.

We wish you a Happy Holiday Season!!!

Directions:

From I-70, Ogallah Exit South 9.4 Miles, 1 ½ Miles East

Or

From Ellis, 4 Miles South on Ellis Avenue, 7 Miles West on Victoria (Crossover) Road, 1 Mile South, ½ Mile West

Or

3 Miles North of Cedar Bluff on Hiway 147, 1 ½ Miles East

PRAIRIE DELL PINES, LLC.
RR 2, BOX 86
ELLIS, KS 67637



Nicodemus Historical Society
RR2, Box 139
Bogue, KS 67625

DECLARES THE LORD, "LIKE CLAY IN THE HAND OF THE
POTTER, SO ARE YOU IN MY HAND."
(JEREMIAH 18:6 *NIV)

*get Clean
inside*

Dear Ava,

With Halloween approaching I thought you might enjoy the following message. I received it from one of our fellow subscribers last year. It is simply titled.....

"PUMPKINS"

A woman was asked by a coworker, "What is it like to be a Christian?" The coworker replied, "It is like being a pumpkin. God pick you from the patch, brings you in, and washes all the dirt off of you. Then he cuts off the top and scoops out all the yucky stuff.

It is written: O LORD, YOU ARE OUR FATHER, WE ARE THE CLAY, AND YOU OUR POTTER; AND WE ARE THE WORK OF YOUR HAND. (ISAIAH 64:8)

Then He removes the seeds of doubt, hate, greed, and then He carves you a new smiling face and puts His light inside of you to shine for all the world to see."

It is written; YOU WILL LIGHT MY LAMP; THE LORD MY GOD WILL ENLIGHTEN MY DARKNESS. (PSALM 18:28)
So; LET YOUR LIGHT SO SHINE BEFORE MEN, THAT THEY MAY SEE YOUR GOOD WORKS AND GLORIFY YOUR FATHER IN HEAVEN! (MATTHEW 5:16)

Now this was passed on to me from another "pumpkin," and I have added a few Verses. It is now your turn to pass it on to another "pumpkin." I liked this enough to send it to all of the "pumpkins" in the patch, how about you?

NOTE: Next Saturday Ava, we will look at the darker side of Halloween, and study the History of that day! Until then have a wonderful week, and Be Blessed!

With All My "Pumpkin" Love,
your 'Jack-O-Lantern,' Allen

With My Love & Prayers,
your servant Allen

West Coast Family Reunion



March 2007

Dear Family Members and Friends,

Its spring and its time for family to come together and enjoy some fun in the sun. First of all, I thank all of you for being so patient and waiting to get this information. You all know that planning an event takes time and cooperation from everyone. We have made a couple of changes. Please read all information thoroughly to see the changes that have been made. We want to make this affordable so that all families can participate.

It is time for us to start thinking about this year's *West Coast Family Reunion*. August/September is fast approaching and we must start planning for this wonderful event. Yes, it is time to start saving your dollars and making plans to visit Sacramento, the capitol city of the state of California. We are planning to make this a memorable event. For those of you who have not been here before, Sacramento is a wonderful place to visit and there are lots of things to do and see. This will be a wonderful opportunity for our respective families to get together and socialize as one collective unit to vacation and experience the great state capitol of California. Since Labor Day falls on Monday, September 3rd, family members will not have to rush to get home for work the next day. This will allow family members an opportunity to see and experience the River City and surrounding areas such as Lake Tahoe, Reno, the Wine Country, numerous Indian gambling facilities in the area and the San Francisco Bay Area.

We are planning on having a wonderful time and we are hoping to see all of you here. Don't push this off and say I'll go next time. We have lost Family members since our last reunion. Tomorrow is not promised to any of us and we should not pass on this opportunity to get together for something positive and set a positive example for our younger family members to strive for. The family is the most important asset we have and we should use this unique opportunity to do positive things such as making social and business connections that are very positive and rewarding. Why not do business with a family member when possible, someone you know, love and trust, instead of a complete stranger that you know nothing about.

On a lighter and more positive note family reunions are fun. It gives us a chance to get together for something good and positive. I look forward to seeing all of you on Friday, August 31st. Come and Experience Sacramento!

Please forward this information to anyone that we have missed.

Sincerely,

Raylene Switzer

Robbie Seamster

Cynthia Napue

Things to do for Saturday:



1. Chartered San Francisco bus tour (limited seating), \$18.00 per person.
(We need to have a final count for the tour by June, and we must have the money to reserve your seat)
2. Old Sacramento, Crocker Art Museum and State Capitol tour
3. William Land Park and Zoo tour
4. California State Fair
5. Thunder Valley and Cache Creek Casino

6:00 pm, Saturday Night BBQ Dinner & Dance



Note: ALL MONIES ARE DUE BY THE JUNE 30TH DEADLINE

*****There will be an additional charge of \$10.00 per person if the money is received after June 30th , 2007 deadline. *****

Please send Checks, Money Orders, or Cashier Checks payable to Raylene Switzer or Robbie Seamster mailed to the following address:

Robbie Seamster
1150 Aldertree Way #163
Sacramento, CA 95831
(916) 428-4653
(916) 270-5201
rseamster@edd.ca.gov

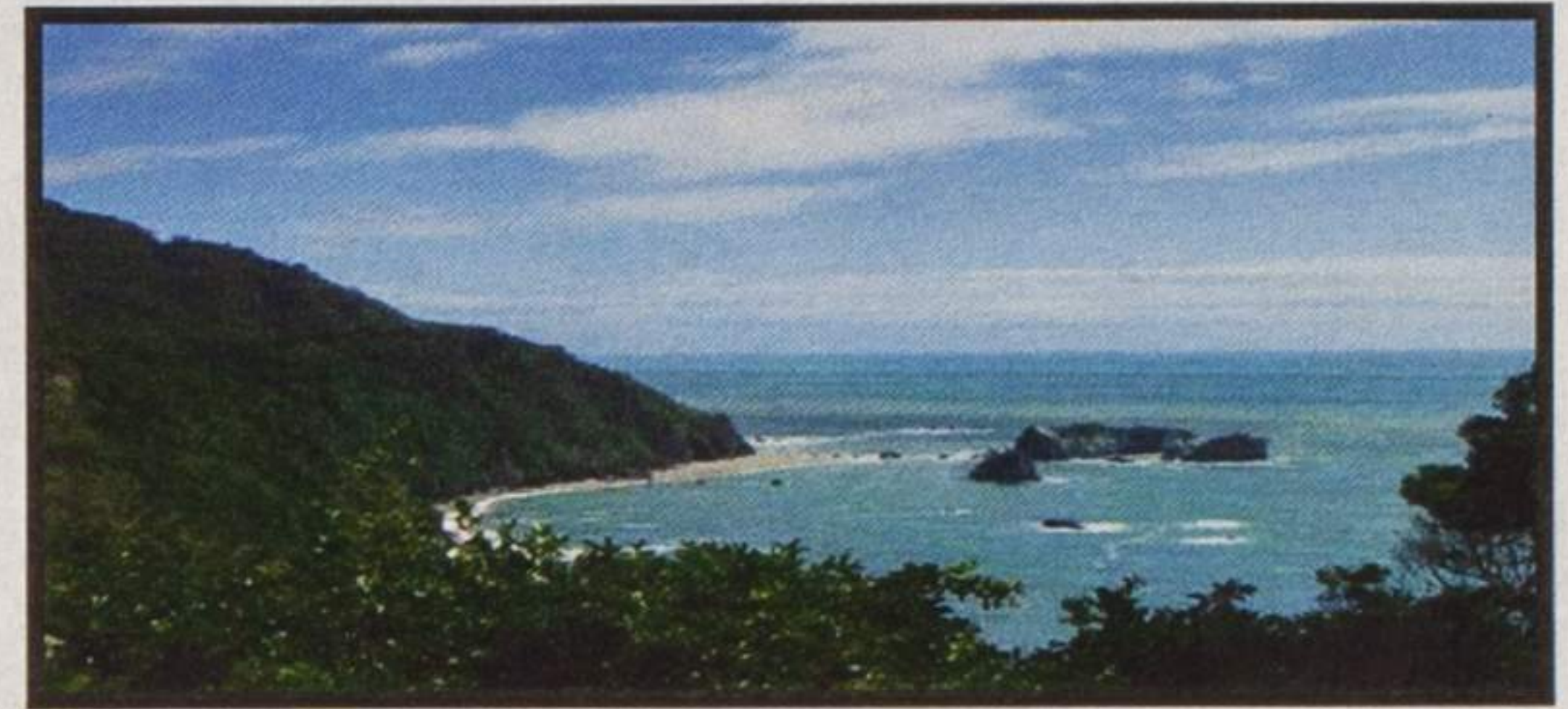
Raylene Switzer-Byrd
8377 Yermo Way
Sacramento, CA 95828
(916) 688-1630
(916) 227-0371
rswitzer@edd.ca.gov

**If you have any questions or comments, please contact us*

West Coast Family Reunion

Date: Friday, August 31st & Saturday, September 1st 2007

Location: Harold Switzer's Home
6861 Demaret Drive
Sacramento, CA 95822
(916) 421-4753



Hosts: Raylene Switzer, Robbie Seamster, & Cynthia Napue

Fees:

Age 0-4	\$5.00
Age 5-17	\$25.00
Age 18 & Up	\$40.00

Price includes T-Shirt, Friday Night Fish Fry & Saturday BBQ with all of the trimmings, deserts and drinks. There will be plenty of food and fun!

Events & Activities:

08/31/07, 6:00 pm, Friday Night Fish Fry
09/1/07/, 6:00 pm, Saturday Night BBQ



- Karaoke
- Children's games
- Whistology Tournament (rotating partners)
- Slamming dominos/Spinning big six
- Spades for the light-of-heart
- Dancing

*****Smacking lips to feed the stomach and come enjoy rapping at your game.

West Coast Family Reunion Reservation

Name:	Amount Enclosed:	
	Amount to be Paid:	
Address:	City:	State:
Phone:	Email:	
Who are your parents?	Who are your grandparents?	
Names and Ages of Children Attending:		
Names of Adults Attending (including yourself):		
T-Shirt Size (Price Included, 2X and up is an additional \$5.00)		
Small _____ Medium _____ Large _____ X Large _____		
San Francisco Tour? _____ Yes _____ No		Total:
If yes add an additional \$18.00/per person		

- **Don't forget to include the \$18.00 per person for the San Francisco Tour**
- **Bus trip is contingent on the amount of people who are interested; if there are not enough participants then your money will be refunded.**



Our Contact Information:

George
(916) 689-4425



1 Person	\$59.99+Tax= \$68.19
2 People	\$65.99+Tax=\$74.91
<i>*Children Under 17 are free</i>	

Sacramento South

#10437407 Elsie Avenue
SR 99 at Mack Road/Stockton Boulevard
Sacramento, California, United States, 95828
Ravinesh Siingh, General Manager
Phone: (916) 689-655
Fax: (916) 689-6495

Governors Inn Hotel



The Governors Inn Hotel is a proud member of The Sacramento Convention and Visitors Bureau and the California lodging Industry Association.

For general information please contact us at:
In Sacramento: 916-448-7224
Toll Free: 800-999-6689
Fax: 916-448-7382

<http://www.governorsinnhotel.com/index.html>

Rate for room per contact :

\$95.20 per room if group rate if multiple rooms are reserved

West Coast Family Reunion Accommodations

Comfort Inn Suites

**Address: 21 Howe Avenue
Sacramento, California 95826**



Our Contact Information:

**Ron is our contact, he is offering rooms at:
\$99.00 + tax= \$112.38**

This price is for a room with 2 queen beds.

**There is also a Comfort Inn in Elk Grove:
(916) 478-4000
Call for details**

Ramada Limited



Ramada Limited Sacramento CA

350 Bercut Drive

I-5 & Richards Blvd

Sacramento, CA 95814 US

Phone: 916-442-6971

Fax: 916-444-2809

E-Mail: hotel@sacramentoramada.com

Hotel Website

Room Rate: \$86.23 plus tax