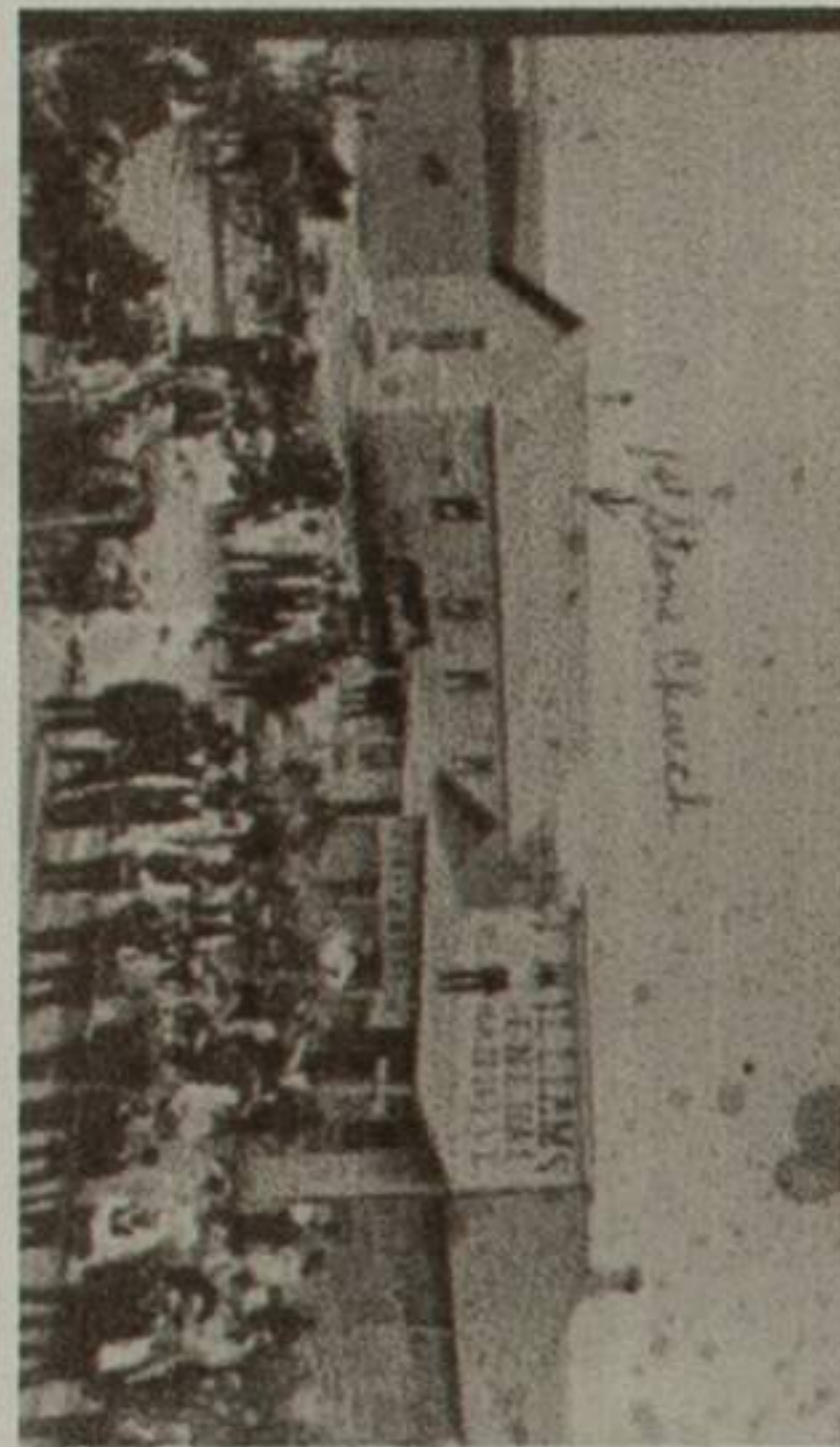
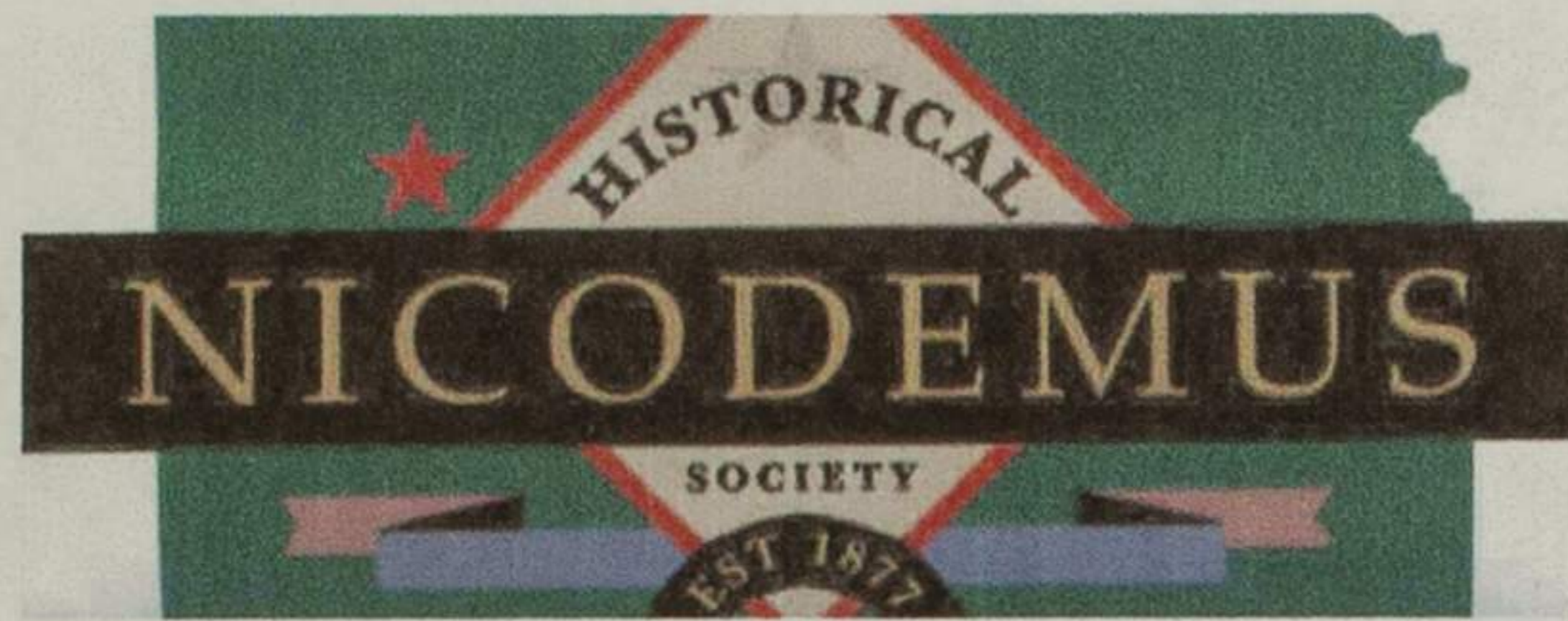


The Nicodemus Historical Society
R.R. 2, Box 131
Nicodemus, Kansas 67625

The Nicodemus Historical Society
R.R. 2, Box 131
Nicodemus, Kansas 67625



**NICODEMUS HISTORICAL SOCIETY
AND MUSEUM**
"The Master Has Already Written The Script"
611 South 5th Street
Historic Nicodemus, KS. 67625



**NICODEMUS HISTORICAL SOCIETY
AND MUSEUM**

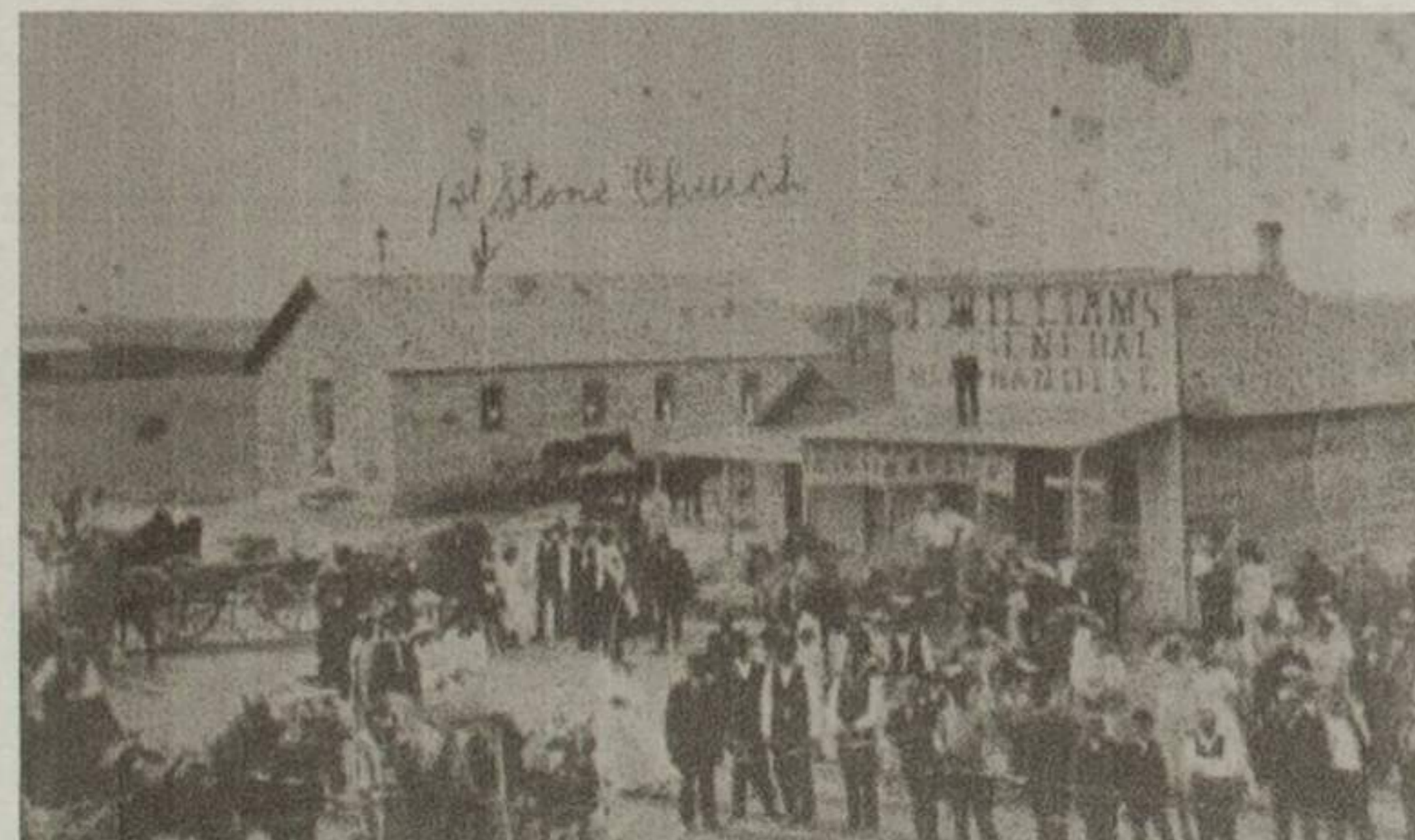
"The Master Has Already Written the Script"

611 South 5th Street
Nicodemus, Kansas 67625
nichis@ruraltel.net
785-839-4280

Hours of Operation;
Saturday 10:00 – 4:00
Sunday 1:00 – 4:00

All other times by appointment only.

*National Historic Site (1996)
National Historic Landmark (1976)
An All African-American Town*



ABOUT THE SOCIETY

OUR MISSION

To *collect, preserve, and interpret* the history of Nicodemus and its founders, residents, and descendants. To assist in the preservation of the remaining historic buildings of Nicodemus.

OUR MUSEUM

Our museum is located on the south end of the historic town of Nicodemus, and was the former home of historian and town resident, Ola Wilson. The house was donated to the Nicodemus Historical Society in 1992 and was reopened October 2005, with the assistance from a grant provided by the Hansen Foundation. It houses our archival collections, exhibits, and offices. We are currently working to upgrade the exterior and interior with heating and air conditioning, running water, new and secure windows, doors, siding, and resurfacing the porch. *We welcome any donations to assist us in our endeavors.*

OUR KU COLLECTION

Kansas University—Spencer Research Library

In 1990 the Nicodemus Historical Society established a photographic and materials collection at the Spencer Research Library. This collection houses one of the nation's most comprehensive and prominent African American photographic collections. It is used and sought out by professionals, media, and students nationwide. Photos included, but are not limited to farming, hunting, women, families, portraits, buildings, etc. The manuscripts include organizational and personal records, diaries, correspondences, receipts, record books, obituaries, etc.

OUR EXHIBITS

We currently have two exhibits: (1) **The Kansas-Kentucky Connection.** That covers the history of the migration from Kentucky to Kansas and the general history of the town up to present day. It includes 10 text and photo panels, and 10 historic farmed photos. (2) **The Women of Nicodemus** is a 10 historic photographic exhibit. (Available for traveling)

Ways You Can Help

**Genealogy—Photo Collections—Fund Raising
Memberships—Volunteering**

OUR ANNUAL EVENTS

Pioneer Day

This annual event is usually held the second week in October. The highlight of the event is to feature crafts, foods, bake sale, living history programs, period games, hay/wagon rides, etc. The history of Nicodemus is highlighted.

Christmas Tree Trimming Party

This annual event is held the first or second Saturday in December. A large tree is donated by Prairie Dell Pines, tree farm near Ogalla. In the spirit of giving Lynn and his wife Karla Davignon, started the tradition in 2001, of donating one of their trees to the Historical Society for the community. Children and adults participate in the selection of the tree at the tree farm. The tree is put up in the Township Hall and decorated, with refreshments and Christmas music provided. Everyone is encouraged to bring an ornament.

OUR PROGRAMS

Angela Bates, Executive Director, and former founder and president, is available for a slide and history presentations covering the history of Nicodemus. This 1 hour program has been presented to schools and organizations throughout the state of Kansas and around the nation. Call to arrange for this dynamic presentation!

OUR GIFT SHOP

A small section in our museum is dedicated to selling selected items. Our logo t-shirts and hats are among the most popular items sold. Other items include, stationary, greeting cards, posters, books, coloring books, documentary film, commemorative stamped items, crafts, Nicodemus Flour COOP items and Ernestine's BBQ Sauce.

OTHER COMMUNITY EVENTS

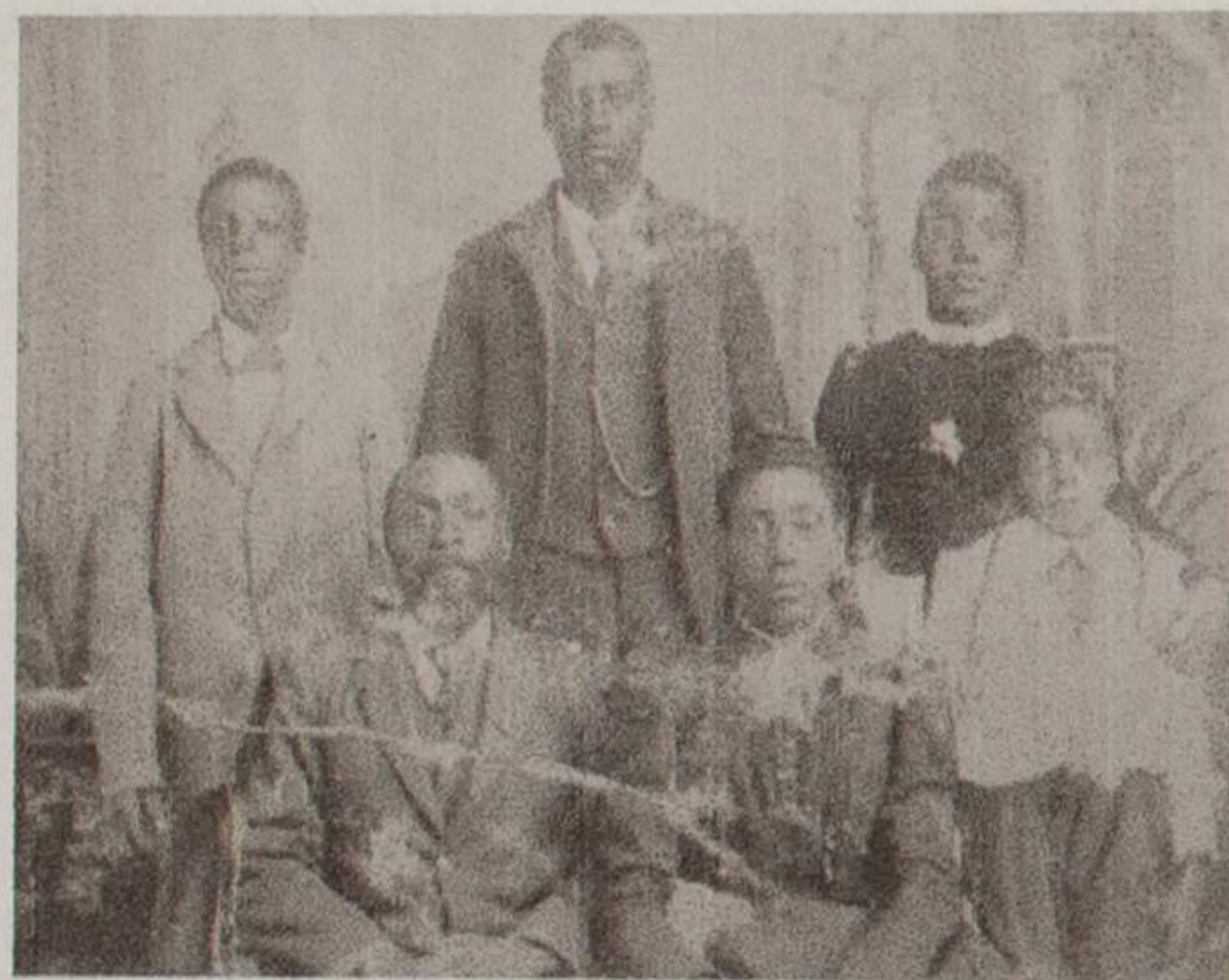
Emancipation/Homecoming Celebration
Last Week End in July

Nicodemus Jazz Festival
September (call 785-421-3311 for date)

"THE MASTER HAS ALREADY WRITTEN THE SCRIPT"

You Are the Future of Your Past

Nicodemus was established in 1877, by former slaves from Kentucky. W. R. Hill a white man from Indiana and W. H. Smith a black pioneer established a partnership that resulted in the organization of two towns, Nicodemus and Hill City. In the spring of 1877 Hill and Smith ventured to Topeka, Kansas where with four other black ministers, they organized the Nicodemus Town Company. Hill and Rev. Roundtree, one of the organizing members, traveled to Lexington and Georgetown, Kentucky to convince Blacks to escape the oppression of the south by migrating to the 'Promise Lands' of Kansas, and settle at Nicodemus. In September a convinced group of about 350 reached their new home at Nicodemus. From these few souls a vision of hope sprung and the town of Nicodemus began its journey that has resulted in it becoming the only remaining all Black town west of the Mississippi, still in existence today.



The Charles and Emma Williams Family

Today, with a population of less than 30, it stands as a beacon on the High Plains of Kansas, symbolizing the true spirit of the African Americans, after Emancipation. This tiny town has survived in spite of all the odds and is a national icon to the African American spirit. In 1996 it became a unit of the National Park Service, as Nicodemus National Historic Site. The journey to this designation was envisioned, initiated and pursued by the Nicodemus Historical Society and its founder and President, Angela Bates. In the spirit of their ancestors, and through hard work and pure determination, the members of the Historical Society coordinated with the community and secured this honorable and most distinguished congressional designation. Working with Congress and the National Park Service, the Nicodemus Historical Society has achieved one of our most challenging objectives—assisting in the preservation of our historic architectural remains. The preservation of Nicodemus and its history is not only the responsibility of the community and the Historical Society, but the federal government, through the National Park Service. We continue to collect, preserve and interpret our rich history here at Nicodemus and continue to let our light shine bright as a beacon of African American town survival.



COMMUNITY HISTORY



HISTORIC PHOTO COLLECTION



GENEALOGY FILES



Reasons For Your Membership and Donations

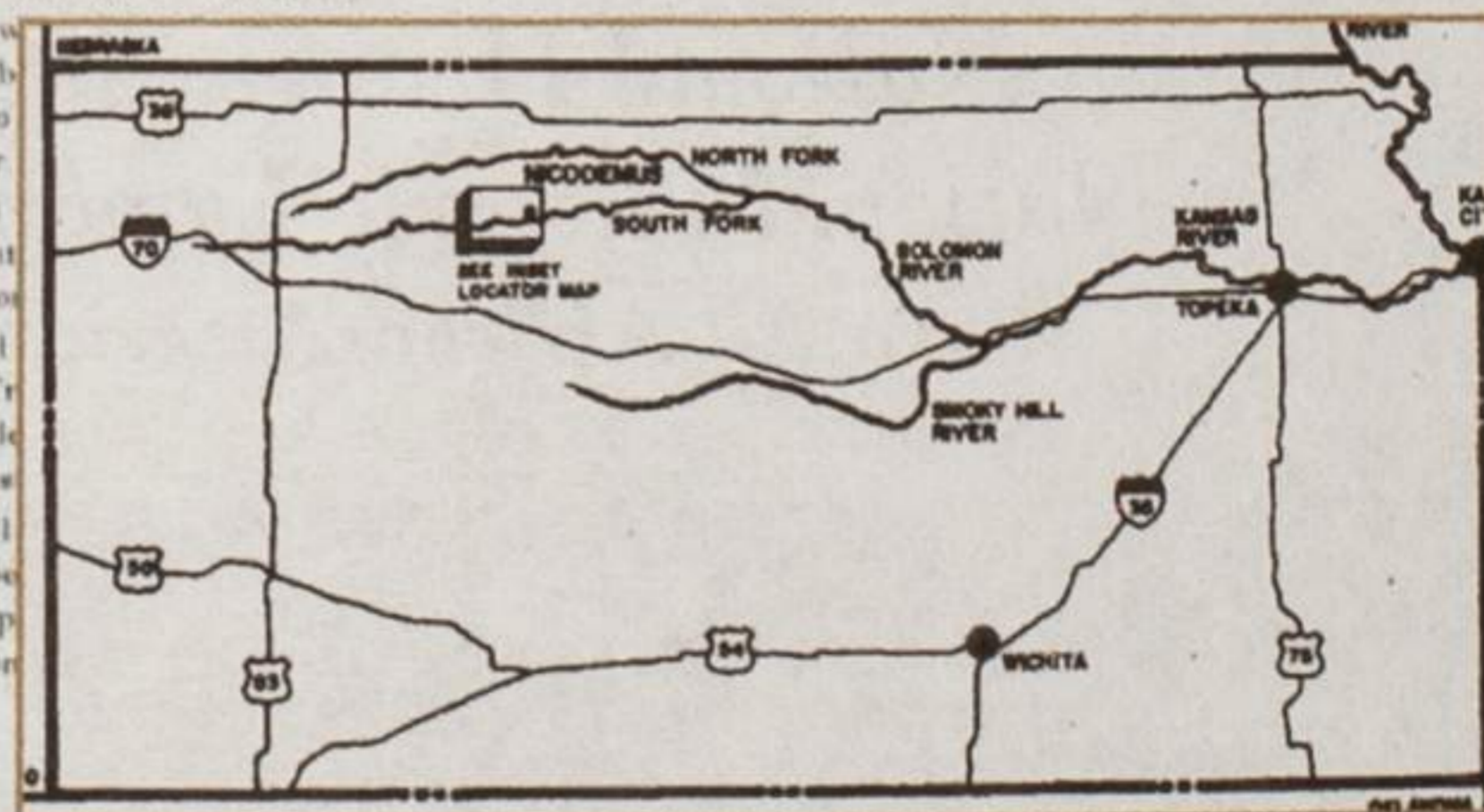
- o To keep your connection with your history alive and current.
- o To assist us in preserving the irreplaceable.
- o To assist us in protecting and preserving our historic town site.
- o To develop a preservation standard that will insure our continued future.
- o To encourage you to become an advocate for the preservation of our history.

You'll receive a quarterly newsletter, discounts on gift items, and special offers and invitations.

Your donations and contributions are tax-deductible and will assist us when we need leveraging funds for potential grant. Donations and contributions will assist in the development of exhibits and programs that will tell our unique story.

All Colored People
THAT WANT TO
GO TO KANSAS,
 On September 5th, 1877,
Can do so for \$5.00

IMMIGRATION.
WHEREAS, We, the colored people of Lexington, Ky. knowing that there is an abundance of choice lands now belonging to the Government, have assembled ourselves together for the purpose of locating on said lands. Therefore,
BE IT RESOLVED, That we do move
Any person wishing to become a member
one dollar (\$1.00), and this money is to
ments of twenty-five cents at a time, or
RESOLVED, That this Colony has
Town, Solomon Valley, Graham Count
cant lands now in their midst, which co
RESOLVE, That this Colony shall
dent, Secretary, Treasurer, and three Tr
—Isaac Talbot; Secretary—W. J. Nile
Lee, William Jones, and Abner Webe
RESOLVE, That this Colony shall
less, as the case may require, to keep pe
his dues, as aforesaid, or failing to comp
be recognized or protected by the Color



MEMBERSHIP PROGRAM

Membership renewal is due January 1. Dues received after September will be credited to the next full year. Help us up-date our mailing list by providing names and addresses of your family members. **GIVE A GIFT OF MEMBERSHIP!**

Name _____ Descendant Y / N _____
 Please Print
 Street: _____
 City: _____
 State: _____ Zip _____
 Phone: _____
 E-Mail: _____
 Father's Name _____ Mother's Name _____
 Family Members (descendants only) _____
 Birthdays _____
 Membership/Annual Dues: \$20
 Gifts of \$250 or more qualify you for the Friends of Nicodemus Donor Recognition Club. Your support is welcomed!
 Remember us in your Will or Estate Planning.
 Enclosed is my check of \$ _____
 Make checks payable to Nicodemus Historical Society
 I Want to Help With: Genealogy/Collections/Membership/Fund Raising/Volunteering

NICODEMUS HISTORICAL SOCIETY
611 S. 5TH
NICODEMUS, KS 67625

Carol Alexander
8024 Holmes Rd.
Kansas City, MO 64131

FILE

The Nicodemus Historical Society

R.R.#2 Box 139 Bogue, Kansas 67625

(913) 839-4280

Nonprofit Tax ID #: 93-1012167

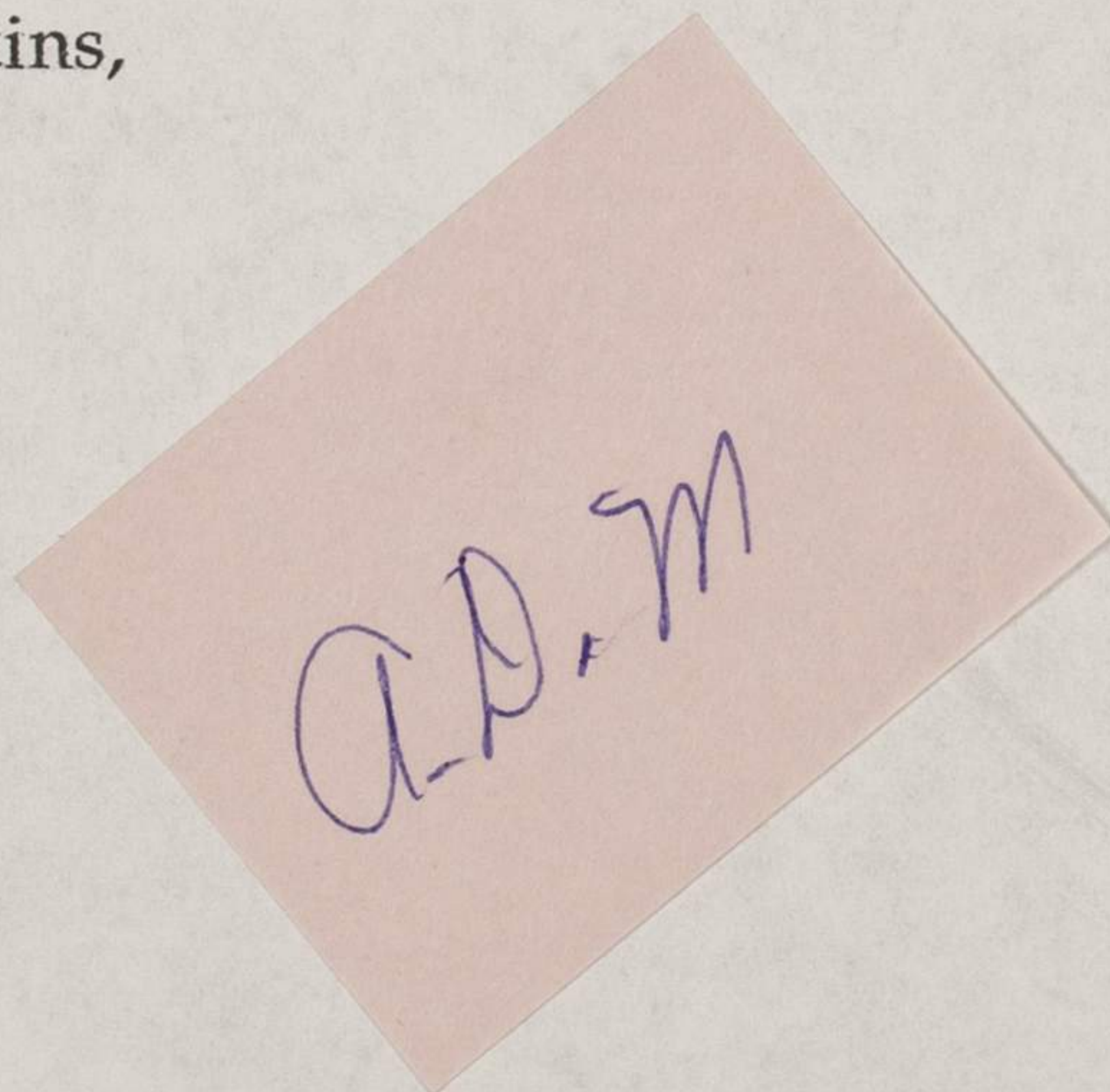
NOTICE

After discussion with Board Member Earlice Switzer, it would be greatly appreciated if we all would hold our official Board Offices/Positions until the end of 1997. We are quickly approaching our 10th anniversary and we need to make changes to improved efficiency in operating, therefore we will need to seriously take a year to look at where we go from here. In doing so, it will be necessary that we hold our present positions until we can have an official election in 1998. During this time we can meet to discuss By-Law and organizational changes, that will benefit us as we move into the coming years and as Nicodemus becomes more of a viable operating National Historic Site/Park. We can take this time to also work on the official election.

I hope that you will accept and continue to operate in your positions.

Thank you,

Angela Bates-Tompkins,
President



A.B.T.M.

October 21, 1991

Stephen Lenzen
GPN
1800 North 33rd Street (68583)
P.o.Box 80669
Lincoln, Nebraska 68501-0669

Dear Mr. Lenzen:

I wrote you about a year ago requesting information about the cost and availability of the film "The Black Frontier" and received it. I am now requesting that your organization and or the University of Nebraska make a donation of a copy of this film to the Nicodemus Historical Society. We are on an operational budget that is funded through membership only and have no real funds to make a purchase.

We hope that because we are the Historical Society for Nicodemus and that the one of the films in the series ("Exodusters") is about Nicodemus, that you will see to it that we get a donated copy. We are trying to get copies of all media pieces that have been written or produced on Nicodemus, for our archives.

We also understand that a video of "Exodusters" is currently made available through some stores. We also are requesting that a donation be made to us from copies sold. We know that there was no formal agreement with the individuals who participated in making the film, however with regards to our overall efforts to become a national historic site and preservation efforts, we need donations in any amount, to assist us in our efforts.

Resale \$50.00

I hope that this is not asking too much, but Nicodemus has not been compensated for profits made from films and other productions such as this.

Please advise me as to what you think about such a request. We hope that you can assist us.

Thank you.

Sincerely,

Angela Bates,
President

THE
NICODEMUS
HISTORICAL SOCIETY

July 21, 1998

R.R. 2, Box 139, Bogue, Kansas 67625
(913) 674-3311

Brendajean -

Enclosed is your care package, if you need anything else let me know.

Here is our wish list:

- o Sending me to Washington to work with Dole's Office on legislation
 - o General Budget for next 3 months is \$8,000 includes travel, etc.
- o To develop a traveling exhibit
- o To develop educational materials
- o To open our offices in house that was donated tous
 - o exterior repairs - new windows & screens
 - o porch repairs
 - o exterior lights
 - o another Mac Classic II computer
 - o desk & chair
 - o fax machine
 - o copier
 - o filing cabinets
 - o book shelves
 - o general office supplies (envelopes, pads, pens, etc)
- o Newly printed stationary
- o Brochure
- o Matting and framing of several ertificates, letters, etc.
- o General operating cash
- o postage
- o printing services
- o monies for research
- o monies for traveling expenses (mostly to Wash. D.C. & Kentucky)

Angela

Brenda Jean -

- use the historical society, in reference to you assisting w/ fundraising.
- our non-profit tax # is:
- You can put a packet together, just let me know what you include in it. my suggest is: • brochure, gift list, newsletter.
- Our letter of agreement, enclosed is sufficient for a contract. All checks made ~~available~~ ^{to NHS.} It is our understanding that you agree voluntarily.
- Send everything to R.R #2 Box 139 or to my home address - P.O. Box 907 Hummingbird, Boise, KS 67625
- Mating / Feeding can be done locally, but we'd like to have them done.
- The traveling exhibit hopefully will be ready by October.
- Postage - average about \$50-75/month.

Read

• Bud Norman article in Wichita Newspaper

Working w/ Black towns, to revitalize

Brendayan Base

P.O. Box 49512

Wichita, 67201

(316) 263-5447

- WISH LIST -

• Needs for offices

• FUNDRAISERS

• Newsletters

• Hays is closest place

• Tourist info.

Send

sent
7/2/93

August 12, 1993

Brendajean Bose
P.O. Box 49512
Wichita, KS 67201

Dear Brendajean:

It pleases us that you are interested in assisting The Nicodemus Historical Society in our overall efforts for collecting and preserving our most important history. We would like for you to provide your voluntary assistance to help us secure office equipment and supplies, printing services, exterior materials (i.e. paint, etc.) for our new offices, postage, and activities related to funding raising for our various projects.

In exchange for items or services secured we would like to provide ad space in our newsletter. We would also like to have bio and business synopses from you so that we might write an article or note about you and your efforts to assist us.

We appreciate any assistance that you can provide us, we only ask that you ok any correspondences with us before you send them out, and then provide us with a copy for our files.

Sincerely,

Angela Bates,
President

August 28, 1993

Karan Godbout
Phillips County Genealogical Society
449 Berglund Dr.
Philipsburg, KS 67625

Dear Karan:

This is a special THANK YOU for your \$100.00 donation to the Nicodemus Historical Society. We appreciate every little bit of support and financial assistance we can get.

We will be adding your organization to our mailing list so that you can keep abreast of our efforts.

Thank you again!

Sincerely,

Angela Bates,
President

*Send letter of
Thank you!*

August 18, 1993
449 Berglund Dr.
Phillipsburg, KS 67661

The Nicodemus Historical Society
RR 2 Box 139
Bogue, Kansas 67625

Dear Angela:

At our monthly meeting last night, a motion was made to donate \$100.00 to the Nicodemus Historical Society for the restoration project. We all enjoyed your presentation at our last meeting. Also, we support your efforts to restore the town.

Again I want to thank you for making the trip over to Phillipsburg and for giving such a interesting presentation.

Sincerely,

Karan Godbout

Karan Godbout
Secretary
Phillips County Genealogical Society

Check is enclosed

Haran Godbout
449 Berglund Dr
Phillipsburg KS 67661



Angela Bates
The Nicodemus Historical Soc
RR 2 Box 139
Bozue Ks 67625

October 7, 1993

Spencer Research Library
Kansas University
Lawrence, Kansas 66045-2800

Dear Sherri:

I write to give permission for Dan Chu, writer for Dan Chu & Associates, Editorial Services of New York, to review photos in our Nicodemus collection. He should be in Kansas the week of October 18 - 22 and will be visiting the Library to review the photos. If he is interested in any, please inform me.

Sincerely,

Angela Bates,
President

cc: Dan Chu

December 3, 1993

Sheryl Williams, Curator
Spencer Research Library
Kansas University
Lawrence, Kansas 66045

Dear Sheryl:

Enclosed is a list of photos that we are giving permission for reproduction and use. Photo #232 of 3 ladies and a car is not to be used. This is a photo that is a part of the Women of Nicodemus photo exhibit and we do not want it used. All others listed are ok for release. Please bill Dan Chu for the photo reprints. As indicated to him there is a use fee that we will be charging him when he selects the ones he wants to use in his book.

Thank you.

Sincerely,

Angela Bates,
President

Enclosure

February 21, 1994

Paul Oberg
Museum Programs
855 S. Martinson
Wichita, KS 67213

Dear Paul:

I write to follow up on our conversation with regards to the book on Nicodemus. Although we do not have the book available we will be adding you to the list to contact after it is published. I have enclosed some additional information for your review. Please feel free to contact me if you have additional questions.

Sincerely,

Angela Bates

Cyn
Paul Oberly -
Museum Programs - DPS Wichita
855 S. Martinson
Wichita, KS 67213

~~☞~~ Interested in book

Send info pkg for Hist. Socy.

May 31, 1994

Please send us 1 copy of the "Black Pioneers - The Exodusters". The cost that was quoted was \$23.95 and a check in that amount is enclosed.

Thank you,

Sincerely,

Angela Bates,
President

July 13, 1994

Dan Chu
601 West End Avenue
New York, NY 10024

Dear Dan:

I received your letter the other day. The photos turned out nice. The lady in the center/seated is my great, great, great grandmother LeeAnna Samuels.

If I can be of further assistance, please let me know.

Sincerely,

Angela Bates

Dan Chu & Associates

Editorial Services

June 26, 1994

Dear Angela:

The latest issue of the *Nicodemus News Review* arrived here some days ago, and I was surprised—most pleasantly—to see my birthday listed in the calendar. That gave me a real sense of belonging. It also reminded me that nearly a full year has passed since I joined the Historical Society and that it is time to renew my membership. Accordingly, I am enclosing a check to cover my 1994 dues, plus a little extra to help defray some of the Society's expenses during the upcoming Emancipation Celebration that, alas, I will miss this year.

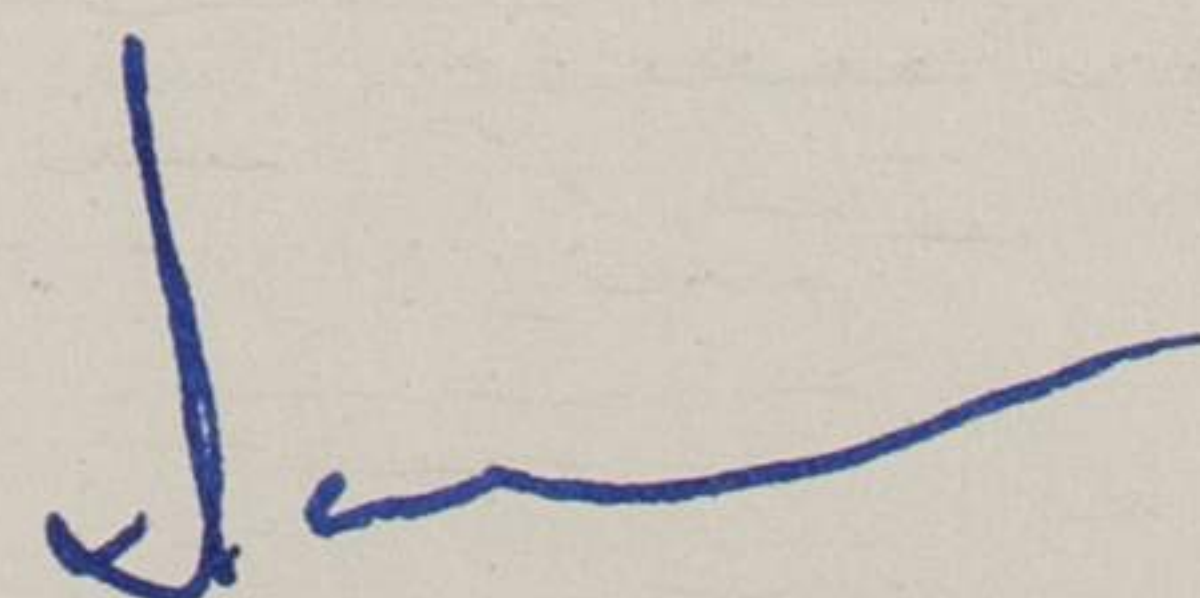
It also was a delight to read the full title and examine the music and lyrics to the original Nicodemus song. What a historical find! Congratulations to you.

My own project is progressing, though my publisher works at a snail's pace. The manuscript, completed back in February, was accepted with some enthusiasm. Even so, four months later, we've still not gotten around to selecting photos and illustrations, which explains why I haven't gotten back to you for help with credits and identification.

I'm enclosing photocopied samplings of a few shots that I'm sure—well, pretty sure—will make the final cut. With regard to the photo from the Kansas Collection, my impression is that one of the four distinguished-looking women (possibly the seated one) is your great-great grandmother. Is that correct? Anyway, if that photo is indeed selected for inclusion in the book, I will check with you before making any rash statements.

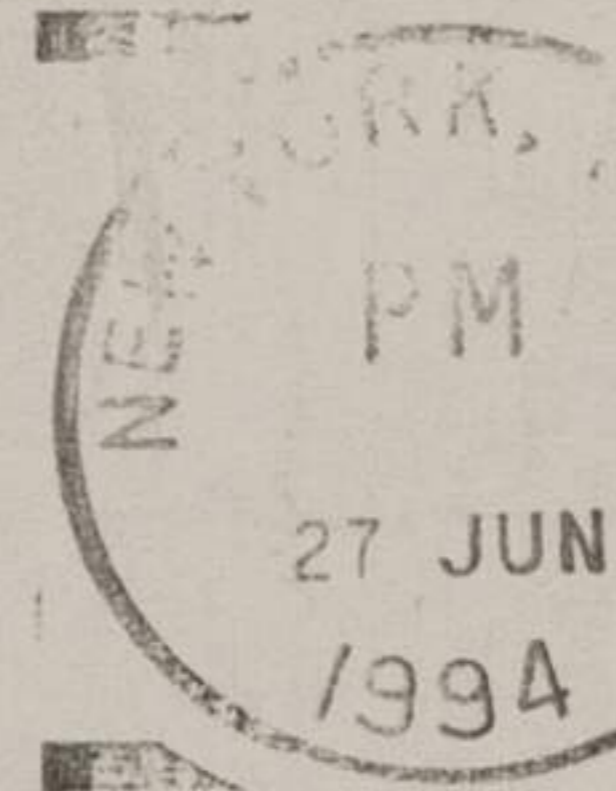
All best for a most successful 116th Emancipation Celebration.

Sincerely,

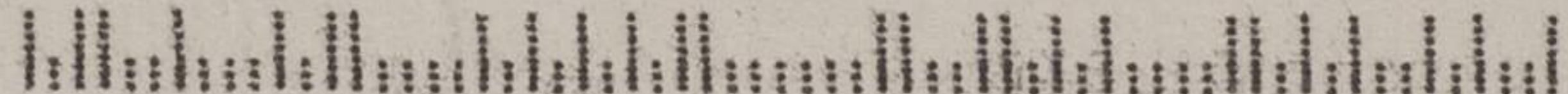
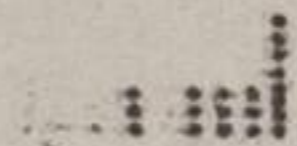


Dan Chu & Associates

601 West End Avenue
New York, NY 10024



Angela Bates, President
The Nicodemus Historical Society
R.R. #2 Box 139
Bogue, KS 67625



The Nicodemus Historical Society

R.R.#2 Box 139 Bogue, Kansas 67625
(913) 674-3311

September 16, 1994

Graham County Community Foundation, Inc.
P.O. Box 51
Hill City, Kansas 67642

Dear Charter Members:

I apologize for not getting back with you sooner, however, as you all know I stay too busy for my own good.

I would like to respond to your request for my membership to your newly formed member. I have not received any information as of yet or a phone call, however, I know how busy we all are. I am interested, as I am with issues that related to historic preservation and development in the County and across the state. As it stands right now I serve as a board member to a number of organizations across the state and feel that I have spread myself too thin. However, I think that any organization within Graham County of this particular nature, appeals more to my expenditure of energies on a local level.

I would like to know however, more specifically about the mission statement and objectives before I say yes.

Looking forward to hearing from you soon.

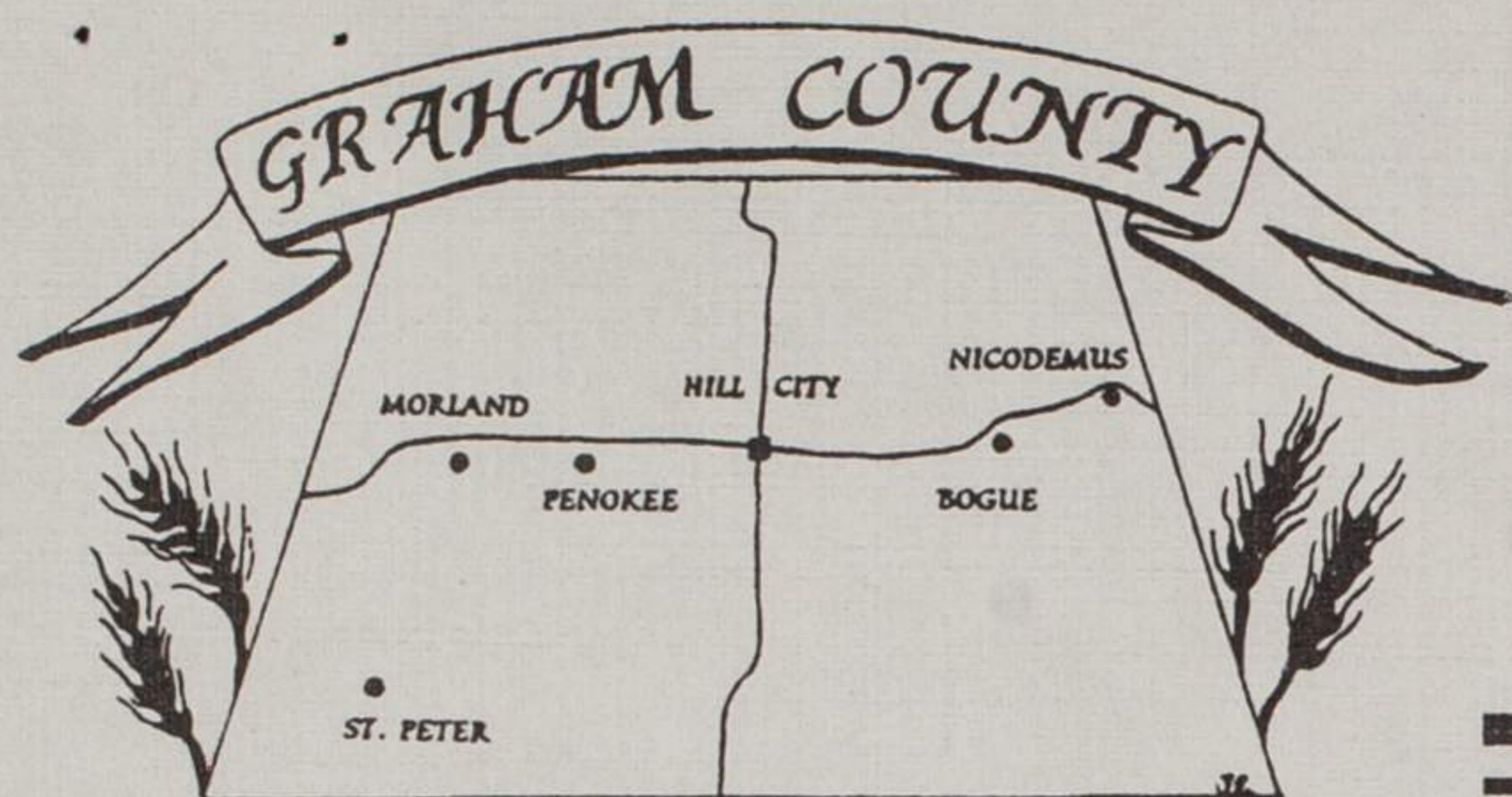
Sincerely,

Angela Bates,
President

*Graham County Community
Foundation, Incorporated*

P.O. Box 51

Hill City, Kansas 67642



COMMUNITY FOUNDATION

August 23, 1994

Charter Members

Allan Shelton

Jerry Aldridge

Loren Johnson

R.W. Culloy

Faye Minium

William B. Elliott

Theodore L. Bahr

Jean L. Wasinger

Liz VanLoenen

Ralph John Keller

Connie Mae Keller

Michelle Schumberger

Angela Bates
Box 29
Bogue Ks 67625

Dear Angela,

For the past many months, there has been a small group of concerned people from across the county that have felt the need to establish a Community Foundation. Such a Foundation is granted a tax exempt status and is concerned with benevolent causes.

The Foundation has been approved by the IRS as a 501(C)(3) tax exempt corporation. Now, we need a few people to join together and become involved with this effort.

We need civic minded people to give us direction. You have been nominated by the remaining incorporators as a prospective member. You have demonstrated a concern for our cities and county; therefore we need your thoughts and energy to make this Community Foundation take roots and carry out it's mission.

You will be called upon by one of those listed below. They will give you a brochure which explains our mission and you will be asked to become a voting member. There is a small membership fee.

It is our sincere hope that you will join with us in this endeavor to promote and enhance the quality of life in our cities and the county.

Very Truly Yours,

Lorene Johnson
Jerry Aldridge
Bill Elliott
Liz VanLoenen
Ralph Keller
Connie Keller
R.W. Culley

Graham County Community Foundation, Inc.
P.O. Box 51
Hill City, KS 67642



ANGELA BATES
BOX 29
BOGUE KS 67625

[Handwritten blue ink scribbles and signatures]

The Nicodemus Historical Society

R.R.#2 Box 139 Bogue, Kansas 67625

(913) 674-3311

October 6, 1994

Dan Chu
601 West End Avenue
New York, NY 10024

Dear Dan:

I received your letter and to respond to your questions regarding the photo of LeeAnna Samuels, she is my great, great, great grandmother. and the three ladies from left to right are her daughters, Harriet, Margaret, and Mary. I believe this was taken at their home in Downs, Kansas and am not sure when it was taken, but probably between 1885-1910.

With regards to Perry Bates, he is my great, great grandfather, and yes that was his grave marker at Mt. Olive where you took the photo.

With regards to the People magazine photo, yes that is taken of Freddie in front of his home in Nicodemus. Yes it is true he is called "Boo", by everyone. Is he aware that you are using this photo of him. You may want to write and let him know. He can be reached by simply writing him at R.R. #2, Bogue, Kansas.

Any more questions, just write. Looks like things are finally progressing.

Sincerely,

Angela Bates,
President

Dan Chu & Associates

Editorial Services

September 30, 1994

Angela Bates, President
The Nicodemus Historical Society
R.R.2, Box 131
Nicodemus KS 67625

Dear Angela:

The publishing people are finally getting their act together on my book, and we've shipped a selection of photos off to the book designer. I think I have enough information for caption purposes on nearly all of the selected pictures, but I need your help to be absolutely sure on the three that I've enclosed here.

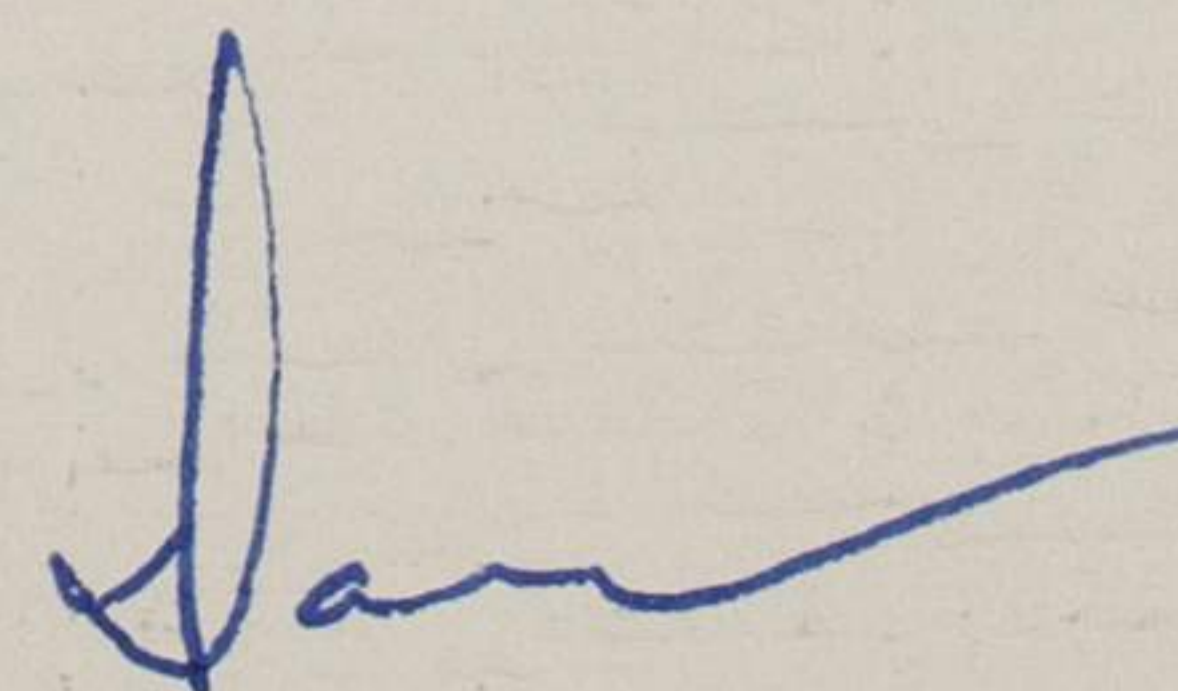
#1— I had sent you a copy of this photo previously, and you were kind enough to inform me that the seated lady was your great, great, great grandmother LeeAnna Samuels (Have I got the right number of "greats"?). Now I need the IDs of the three standing ladies, from left to right, their names if possible, and whether they are Mrs. Samuels' daughters, nieces, neighbors, friends or who? Is that Mrs. Samuels' home in the background? When was this photo taken--actually or approximately?

#2—This photo of original settler Perry Bates came from the Kansas State Historical Society. Since I also have a photo of you at the grave of your great, great grandfather Perry Bates (again, have I got the right number of "greats"?), I've assumed that these two Perry Bates are one and the same person. Am I right?

#3—This photo came from the *People* magazine take of a couple of years back that did not ID the home. But from the sign at the left, I deduced that the Switzer here is Fred T. and that this is his home. Another Fred T. photo in that packet said that he is sometimes affectionately called "Uncle Boo." Does that sound right to you?

I would greatly appreciate it if you could answer these for me in a quick note. Many thanks, and good luck on the upcoming Pioneer Days program.

All best,



The Nicodemus Historical Society

R.R.#2 Box 139 Bogue, Kansas 67625
(913) 674-3311

October 18, 1994

Donna Wygle
P.O. Box 351
Tribune, Kansas 67879

Dear Donna:

I received your letter a week ago and am just now getting around to writing you back. I would consider writing an article for the PC newsletter. What about specifically, and for what issue. Give me some particulars and general information about what you want and I'll see what I can come up with.

Thank you for all your support with regards to Nicodemus. Its people like yourself who really make my work seem effortless at times, and its your encouragement that keeps me going.

Talk with you soon.

Sincerely,

Angela Bates
President

IMPORTANT MESSAGE

FOR _____

DATE _____ TIME _____ A.M.
P.M.

M Ethel Satten

OF Thyphue

PHONE KC MO.

AREA CODE NUMBER EXTENSION

FAX Nov. 5th / 816/924-18

MOBILE _____ AREA CODE NUMBER TIME TO CALL

TELEPHONED	PLEASE CALL
CAME TO SEE YOU	WILL CALL AGAIN
WANTS TO SEE YOU	RUSH
RETURNED YOUR CALL	SPECIAL ATTENTION

MESSAGE 3901 E. 47th

KC, MO 64130

40 people

Leave Co: 00 AM - here at
15 & up kids A.M.,

SIGNED kids & adults

The Nicodemus Historical Society

R.R. #2 Box 139 Bogue, Kansas 67625

(913) 674-3311

October 27, 1994

Ethel Sutton
3901 E. 47th
Kansas City, MO 64130

Dear Ethel:

Per our conversation last night enclosed is the information about our tours. Please fill it out and return it. You can write one check for the entire group when you arrive rather than a 50% deposit as indicated on the tour form. Since your group will be returning after the tour, I suggest that you eat at a restaurant in Hays on I70.

I usually meet groups at the road side park where the historical marker is, however, since you will be coming in by bus from the east, I will meet you in Stockton on Highway 24 at 12:00-12:30 at the Coastal Mart. Stockton is about 35 miles straight north of Hays on highway 183. The Coastal Mart is on the right hand side of the street as you enter town. It is real simple.

Enclosed also is a packet of information that each person will receive when they arrive. If anyone is interested in buying T-shirts, lapel pens, videos, or other materials, please call and let me know before you arrive. I will have things available, but we have to order the T-shirts if they are XL, XXL, or XXXL.

I look forward to hosting your group and will assure you it will be an educational experience. See you next Saturday.

Sincerely,

Angela Bates
President

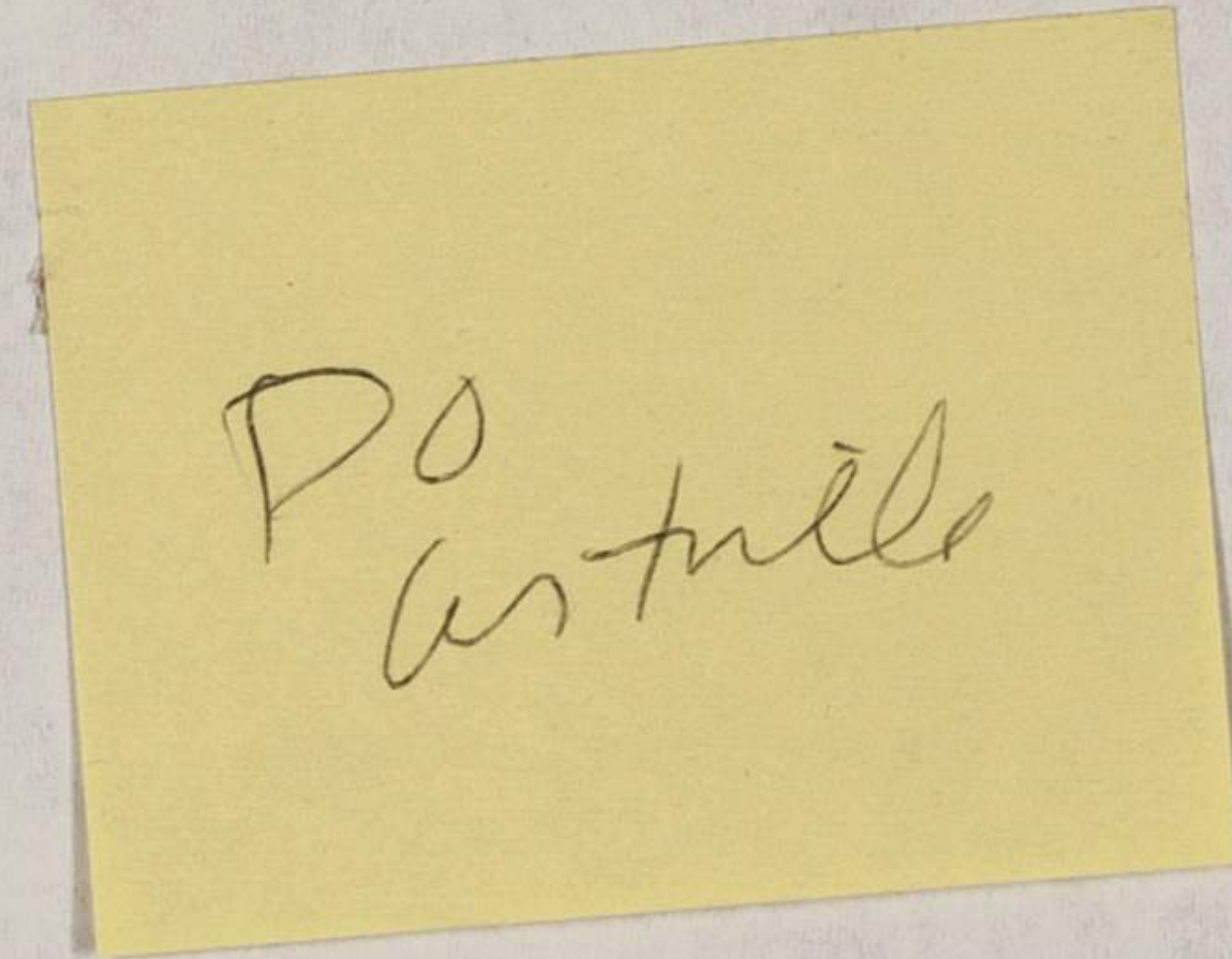
The Nicodemus Historical Society

R.R.#2 Box 139 Bogue, Kansas 67625

(913) 674-3311

November 7, 1994

Donna Wygle
P.O. Box 351
Tribune, KS 67879



Dear Donna:

I got your letter and will try to write an article and get it to you by the end of this month. I hope that this time from is suitable. I should not have a problem writing something interesting wit regards to our homecoming.

I don't know if they pay a small fee or not, but I will do it regardless.

Hope you have a happy Thanksgiving.

Talk with you soon.

Sincerely,

Angela Bates
President

P.O. Box 351
Tribune, KS 67879
October 31, 1994
Halloween

Dear Angela:

Thanks for your response to our request to write an article for People's Culture Newsletter. You requested a focus for your article that would made a good fit to the aim of the magazine. As I see it, the readership of PC is a group of people who have grown weary of complaining about the social ills of our day, i.e. depopulation of the countryside, urban decay, child neglect, etc.etc. and wish to band together with other groups to effect positive change.

Telling once again the story of Nicodemus Homecoming, the last weekend in July and Pioneer Days in October is a good place to begin. The confident "Can Do" spirit that emerges from those gatherings is just the kind of starter to get divergent groups working together in new enterprises. Have you considered having round table forums?

The initial article need not be lengthy. A short history of life and times of Nicodemus, the amazing story of cars lined up for miles returning to Homecoming from all across the county, the dates for Homecoming and Pioneer Days and other events you wish to advertise; that plus the fact that your community has thrown their door open to people of all races and persuasions.

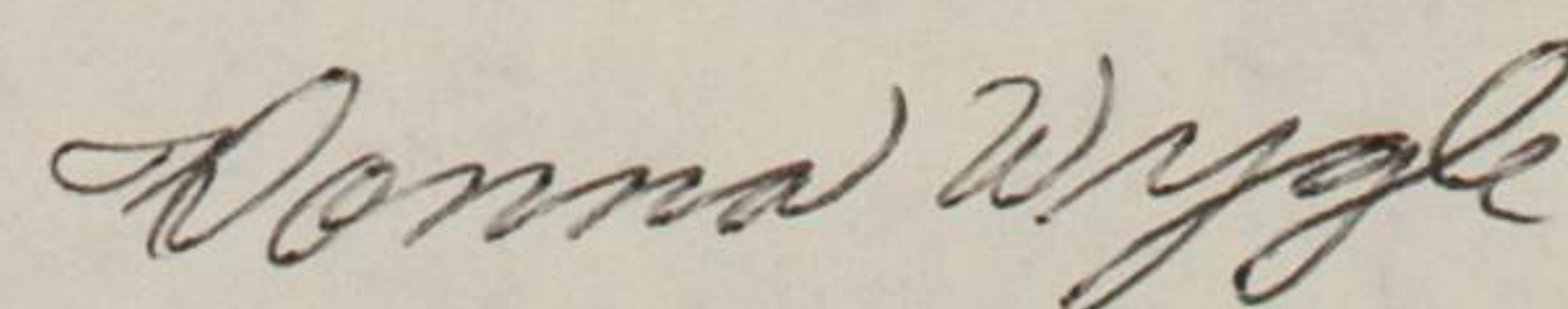
For challenges to tackle there seems to be no end, to name a few of interest: What is more segregated than rural Kansas? Not only is the countryside segregated, it is losing population to the urban area whose centers social fabric is in need of care and attention. These seem to be two faces of the same problem, and we need to be working on solutions.

Some of the best jobs today are technical ones, but not everyone is prepared to assume these. On the other hand pursuit of this competitive technology has frayed the social fabric. We need to once again lavish care on children and to create jobs for their fathers.

There is so much wide open space along the I 70 corridor. Couldn't some entrepreneur start a theme park along there? "Grazing Animals of Africa". You've no doubt seen the pictures of the Camel next to a Kansas farm silo at Nickerson. People slam on their brakes when they see that driving by. Again the open prairies of Kansas have similarities to the savannahs of Africa. It's your heritage. Share it.

Once again, I humbly thank you for considering writing for PC.

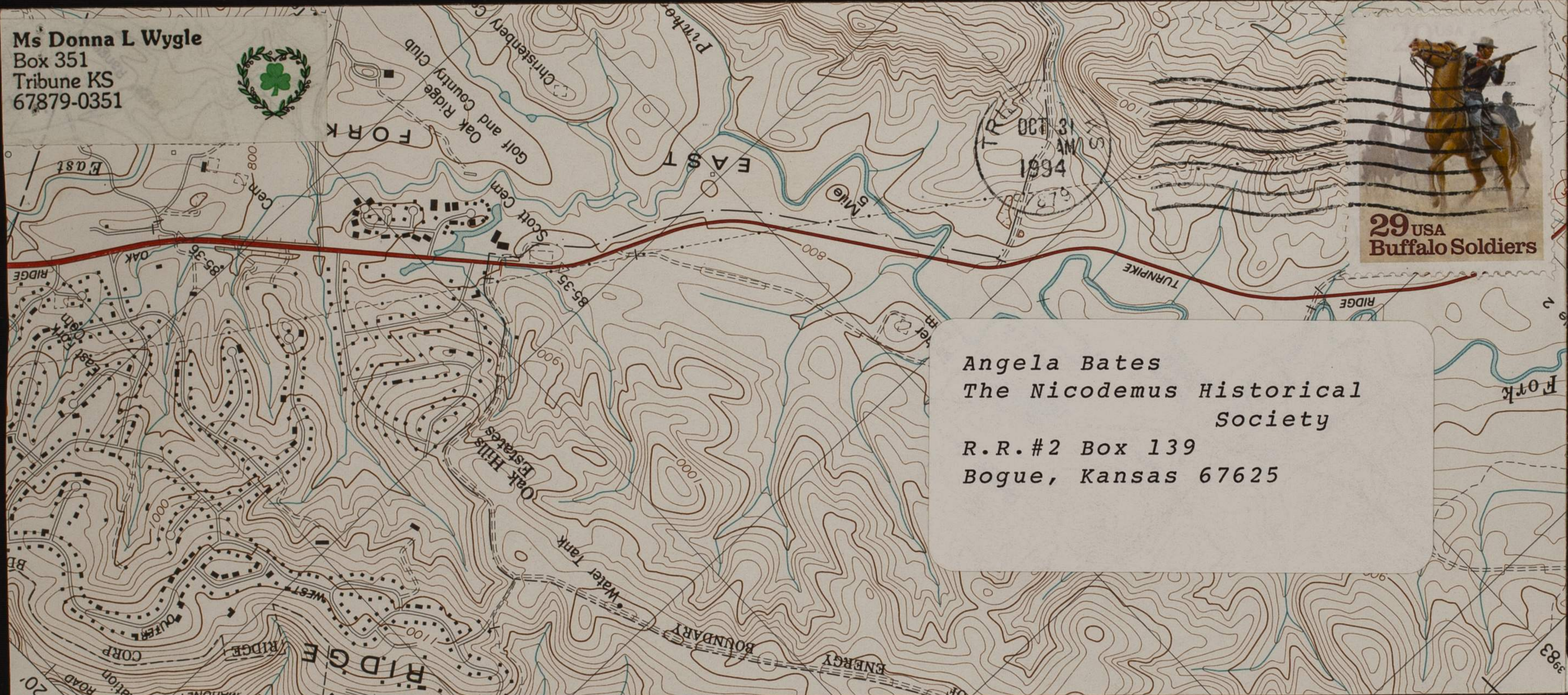
Sincerely,



Donna Wygle



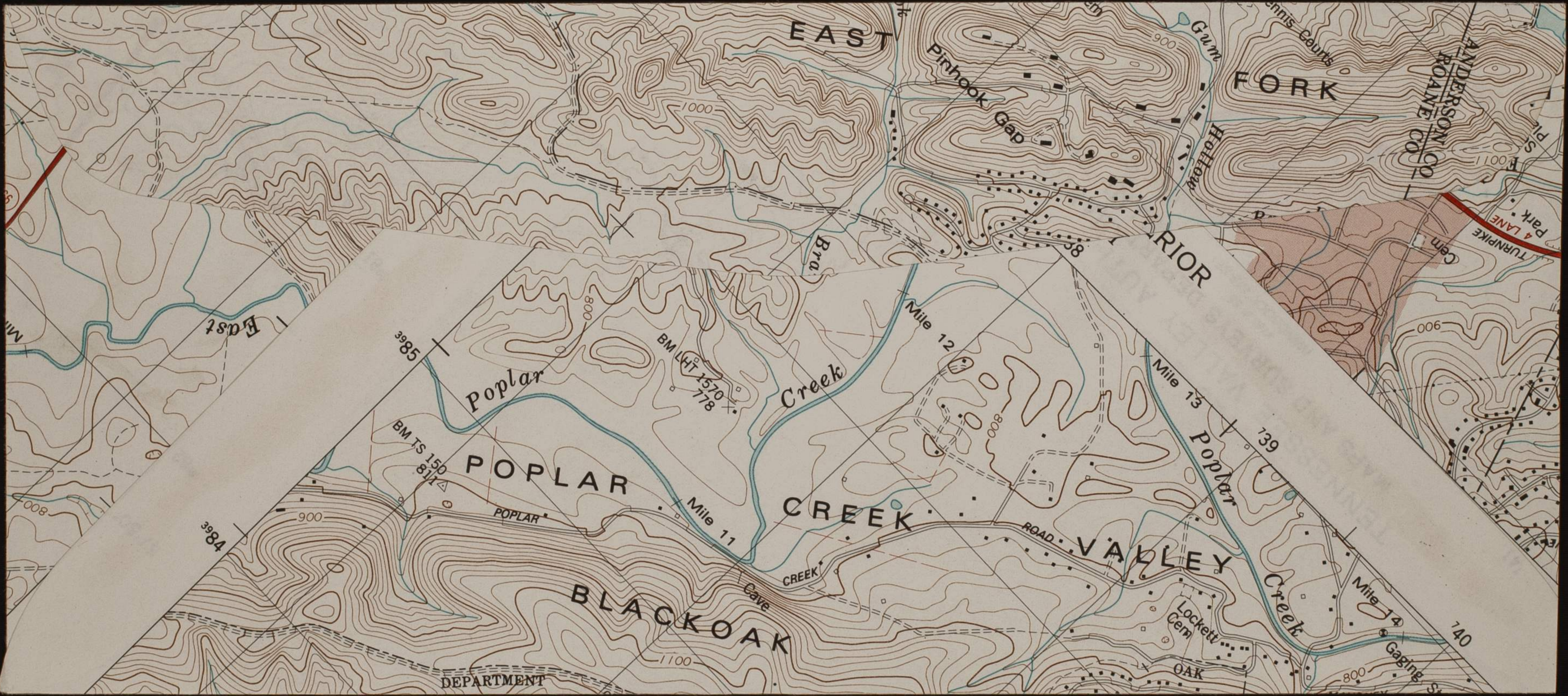
Ms Donna L Wygle
Box 351
Tribune KS
67879-0351



29 USA
Buffalo Soldiers

Angela Bates
The Nicodemus Historical
Society
R.R.#2 Box 139
Bogue, Kansas 67625

383



EAST

FORK

ANDERSON CO
ROANE CO

Pinhook Gap

PRIOR

East

Poplar

Creek

Mile 12

Mile 13

POPLAR

CREEK

VALLEY

BLACKOAK

Creek

Mile 14

Lockett Cem

Gaging St

DEPARTMENT

The Nicodemus Historical Society

R.R.#2 Box 139 Bogue, Kansas 67625
(913) 674-3311

November 22, 1994

Harriet Snook
GFWC Literate
Ford, Kansas 67842

Dear Harriet:

Happy Holidays!!!!

I write to see if you are interested once again in putting your tour group together for a trip here in the Spring? I have enclosed some information again. If you all want, we can arrange for you to eat at Ernestine's. She is my aunt and is still hosting folks for good old Bar-b-que. The cost for her meal is a total of \$10.00/person and she provides Bar-b-que ribs, potato salad, bake beans, rolls, peach cobbler, ice tea/lemonade. There is a new Bed and Breakfast - Pheasant Inn in Hill City (12 miles west) and it is beautiful!

I loved to host a tour for you all and hope that you can arrange it once again.

Hope that you have been feeling and doing well.

Talk with you soon.

Sincerely,

Angela Bates
President

Ford, Kansas

Jan. 12, 1994

5/26 Cancelled
Use money as needed

Dear Angela Bates,

Send
to person

May 27th

Our tour group, CFWC Literatae of Ford, have twelve of twenty members who are planning to go to Niodemus on February 18th. But four of our twenty members are younger than senior citizens. I marked that by myself.

We do need for you to procure us a restaurant where we can not only eat lunch in a private room, but have our short, regular club business meeting there, also. We want you to eat lunch with us - our treat.

We also need to know where to meet you. We will be arriving in 2 cars. (May be crowded!)

Call me collect at 316-369-2472 after 6 o'clock in the evening before our next club meeting on January 21st, if possible. Thank you,
Harriet Snook

Nicodemus Historical Society Tours

R. R. #2, Box 139
Bogue, Kansas 67625

DATE OF TOUR: 2/18/94

Tour Rates:

Tour Groups	\$3.50 per person
Student Tours (K-12)	\$2.50 per person
Senior Citizen (AARP)	\$2.50 per person
Personal Guided Tours	\$15.00

Tours include: 20 minute lecture/slide presentation, townsite tour and visit of Historic ruins. Picnic area is available (please reserve) and old fashion games are provided for recreational time during and after picnic lunches. Lunches are not included in tour packages.

Name of Group: CFWC Literatae Contact Person: Harriet Snook
Address: Ford, Kansas Group Size: 12 women
City/State/Zip: 67842
Phone: 369-2472 (316) Student Grade Level _____
Check One: Tour Group Student Senior Citizens Personal Tour
We would like to reserve the park and old fashion games: Yes No
We would like information about resturants in your area: Yes No
Amount enclosed: \$ 41.00 Check # 1922

Make checks payable to:

The Nicodemus Historical Society

For scheduling Tours call
(913) 674-2874
3311

Harriet J. Brock
CFWC Literatae
Ford, Ks. 67842



Nicodemus Historical Society Tours
P.O. # 2, Box 129
Bogue, Kansas 67625

The Nicodemus Historical Society

R.R.#2 Box 139 Bogue, Kansas 67625

(913) 674-3311

November 22, 1994

Kenneth Hordge
Golden Heritage Tours
P.O. box 26037
Indianapolis, IN 46226

Dear Kenneth:

I got your letter and check the other day, thank you. I hope that you can make a trip to the area before you bring your group, it would be good to have you hear to see first hand our historic town and township.

I encourage you to disperse information about Nicodemus and some of our materials before you bring the group so that they have a basic understanding of our history and where they are going. If you need any information in addition to what I have already sent, just let me know.

Our celebration is the last week end of July 28, 29, 30th. Although this is one of our biggest week ends, you may want to come when Nicodemus is not busy with all the folks - just because it will give them an opportunity to see it the way it really is all year, except that week end. You might also consider September when we have our pioneer days. This is more of an historical informative event. The emancipation celebration is more of a social event with little history. What ever you think.

I am enclosing an article I wrote for the Kansas Tourism Magazine on African American places to visit here in Kansas. This may also be useful to you. In addition order forms for our materials for those that might be interested.

Keep in touch. Talk with you soon.

Sincerely,

Angela Bates
President

IMPORTANT MESSAGE

FOR _____

DATE _____ TIME _____ A.M.
P.M.

M Keith Williams

OF Kenneth Hordidge

PHONE Veritix Tours

AREA CODE NUMBER EXTENSION

FAX

MOBILE 317 / 543-3934

AREA CODE NUMBER TIME TO CALL

TELEPHONED		PLEASE CALL	
CAME TO SEE YOU		WILL CALL AGAIN	
WANTS TO SEE YOU		RUSH	
RETURNED YOUR CALL		SPECIAL ATTENTION	

MESSAGE _____

I left message
10/7

SIGNED _____

IMPORTANT MESSAGE

FOR _____

DATE 10/27 TIME _____ A.M.
P.M.

M _____

OF _____

PHONE OCT. 21
AREA CODE _____ NUMBER _____ EXTENSION _____

FAX

MOBILE _____
AREA CODE _____ NUMBER _____ TIME TO CALL _____

TELEPHONED		PLEASE CALL	
CAME TO SEE YOU		WILL CALL AGAIN	
WANTS TO SEE YOU		RUSH	
RETURNED YOUR CALL		SPECIAL ATTENTION	

MESSAGE Kenneth Hordze

Oct. 21

Golden Heritage Tours

P.O. Box 26037

Indianapolis, IN

SIGNED 46226

Golden Heritage Tours

P.O. Box 26037
Indianapolis, IN 46226

Kenneth Hordge
President

(317) 543-3934

November, 12 1994

Angela Bates
P.O. Box 70
Bogue, Kansas 67625

Dear Angela:

I would like to take this opportunity to thank you for all of your help. The teachers guide is really nice. Enclosed you will find a check for the balance of the guide, student work book, and coloring book. I'm sorry I didn't get to take the tour back in October. I will let you know as soon as I get another opportunity. Please keep me updated on times and dates for the 1995 celebrations. You are doing a wonderful thing! Keep up the good work.

Sincerely,


Kenneth Hordge

The Nicodemus Historical Society

R.R.#2 Box 139 Bogue, Kansas 67625
(913) 839-4280

June 15, 1995

Judith Rombodl
Parkwood Press
P.O. Box 20550
Wichita, Kansas 67208-1550

Dear Judith:

I Received your letter of inquiry and would like to let you know that Nicodemus has two events that are worth noting in your director:

1. The annual Emancipation Celebration - always the last weekend in July. See the flyer enclosed for this year's celebration.
2. Nicodemus Pioneer Days - Closest weekend to Sept. 17. Sometimes maybe held in early October. Celebrating our pioneer experience and history. Highlights include canning and craft items by residents, historical character dramatizations, horse shoeing demonstrations, history exhibits, documentary film showing, horse shoe pitching tournament, children crafts and games, food sampler.

Also you might want to contact Marci Penner in Inman, Kansas, representing the Sampler Foundation. They publish a guide that reflects events held throughout the state of Kansas. Also the State Tourism office also publishes an events guide.

If I can be of further assistance, please feel free to call me or write.

Sincerely,

Angela Bates
President

Parkwood Press

June 9, 1996

Director of Tourism
Nicodemus Historical Society
Nicodemus KS 67625

Dear Sir/Madam,

Bed and breakfast inns continue to explode in popularity as they spread throughout the country. Yet even as more and more people discover the delights of staying in friendly, unique homes all too few travelers know where and how to find them. Too often guidebooks list only selected B&Bs but none are complete and none focus on Kansas.

To fill that void, I am compiling a first: the first complete guide to *all* the B&Bs in Kansas, the first to feature a photograph of each, the first to give each a full page in which to describe services, facilities, local attractions and major annual events in the area. It's absolutely free to the B&Bs. All they have to do is give us the information and we'll take it from there.

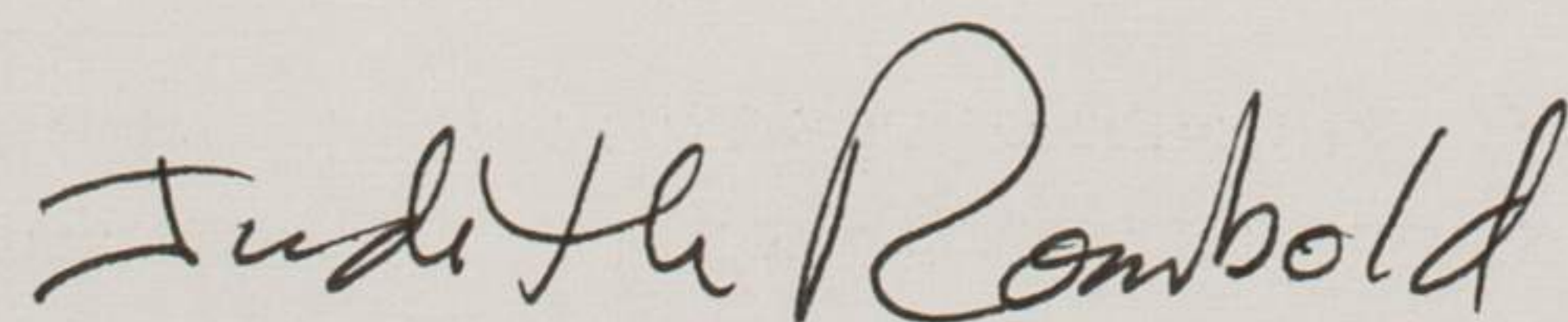
What's the catch? There is only one: finding them all. To that end, we need your help. Please use the enclosed self-addressed envelope to send us the place names, hosts' names and addresses of all the B&Bs that you know of in your area. But please do it as quickly as possible as we'd like to give them plenty of time to get their information to us before the deadline.

We would also appreciate any information you have about attractions and events in your area. Are you home of the world's largest....., or longest....., or shortest something? What about museums, zoos, parks, historical sites, major recreation areas or anything else of interest to the traveler? Tell us also about the Christmas parades, chili cook-offs, sports events, rodeos, county fairs, historical re-enactments and other annual activities that add so much to your community.

This guide will be an excellent resource for all. We will market it through bookstores, visitor information centers, boat and travel shows, antique stores and other places where people look for travel information. As more people discover the B&Bs of Kansas, local economies will benefit — and, best of all, the gracious hosts who open their distinctive homes to visitors from far and near will benefit. B&Bs offer excellent possibilities for relaxed overnight stays and for becoming better acquainted with local communities. You know that, I know that, now we just need to let everybody else know where to find these wonderful places.

Thank you for your kind assistance. I look forward to hearing from you soon.

Sincerely,



Judith Rombold

Encl.

117th Emancipation Celebration

"HomeComing Celebration"

July 28 - July 30, 1995

Monday - Friday	Back-To-History Camp Kids 6 - 17 Years old	
Thursday	Kids Karnival Film Nite w/Free Popcorn Sock-Hop	5-8 p.m. 8 p.m. 9 - 12
Friday	KICK-OFF CELEBRATION "Lemule Sheppard" Blues Artist B I N G O (Township Hall) Historical Society Photo Display Dance BAND - "INFINITY"	NOON 4:00 p.m. 1p.m.-Until 8:00-1:00 a.m.
Saturday	TOWN MEETING Parade	10:00 a.m. 11:00 a.m.
SHEMAR MOORE		
"MALCOLM" YOUNG AND RESTLESS SHOW		
WILL CROWN: MISS NICODEMUS 1995		
Guest Speaker - Noon		
PARK SUPERINTENDENT - RAYFORD HARPER		
COLORADO NATIONAL BANK - BILL BRIDGES		
Awards Presentations -		
ENTREPRENEUR: ERNESTINE VANDUVALL		
Sports Hall of Fame: DALE ALEXANDER		
Business Man of the Year: AARON SAYERS		
	Horse Race	1:00 p.m.
	Fashion/Talent Show	1:30 p.m.
Reception with Shemar Moore - Township Hall		
"Buffalo Soldier" Period Wedding		
	Church Services Talent Night	7:00 p.m.
Featured Guest Musical Director - Thomas Wellington		
	Dance	8 - 1 a.m.
Sunday	Church Services Community Picnic At the Church Hall or Township Hall Ice Cream Social/Jazz in the Park Clean-up Party	10:00 a.m. After Church Service 3:00 p.m. 7:30 p.m.



VENDORS: FOOD, CRAFTS, ART, EDUCATIONAL MATERIALS

Information call JohnElla Holmes (913) 839-4484 or Wanda Adams (913) 839-4289 • Fax line(913) 839-4485

Buttons for Celebration Events \$10 adults/\$6 youth

The Nicodemus Historical Society

R.R.#2 Box 139 Bogue, Kansas 67625
(913) 839-3311

Dear

We received your 1996 dues and want to thank you for your prompt support to this striving organization.

We hope to achieve in 1996 several major goals:

- o Open offices/museum by June
- o Get Nicodemus Passed
- o Increase our membership by 100
- o Keep Nicodemus ALIVE (we're down to 26 residents)
- o Increase tourism to Nicodemus

We obviously are working continuously on genealogy and general research into the history of Nicodemus.

We want to solicit your help during 1996. How can YOU help? Here's how.

- o Assist and participate as much as you are able.
- o Support the opening of our offices/museum on the townsite by purchasing one of the categories in the fund raiser enclosed. Your name on our wall will be impressive to all who see. We need your dollars for renovations.
- o Write Senator Dole and Kassebaum and tell them to support the Nicodemus Bill for site designation.
- o Give the enclosed application to a friend, relative or associate and help us with our membership.
- o Send any additional donations to assist us with our monthly operational expenses. We need a xerox machine, office supplies, stationary, financial support for the newsletter (\$250-\$300 each time we print), and postage (we will even accept stamps if you want to donate them).

Sincerely,

Angela Bates-Tompkins,
President

The Nicodemus Historical Society

R.R.#2 Box 139 Bogue, Kansas 67625

(913) 674-3311

April 24, 1996

Tommy -

The concept of a life time membership is great. I will run this past the board and maybe next year we will include it in our new dues and membership letter. Thanks.

The banner is on its way!

Please encourage family members attending the re-union to join the Historical Society! Its a must. Also encourage them to attend the Emancipation Celebration this year! May be next year all of the folks that usually attend the west coast re-union could think about coming to Nicodemus for the Emancipation Celebration.

Take care - thanks for your support.

Sincerely,

Angela Bates-Tompkins
President

Hi Cous,
Tracy Wiley

Sorry To TAKE So long

getting you THE DUES

I OWE! Enclosed is

\$~~50~~⁵⁰. Could you mail

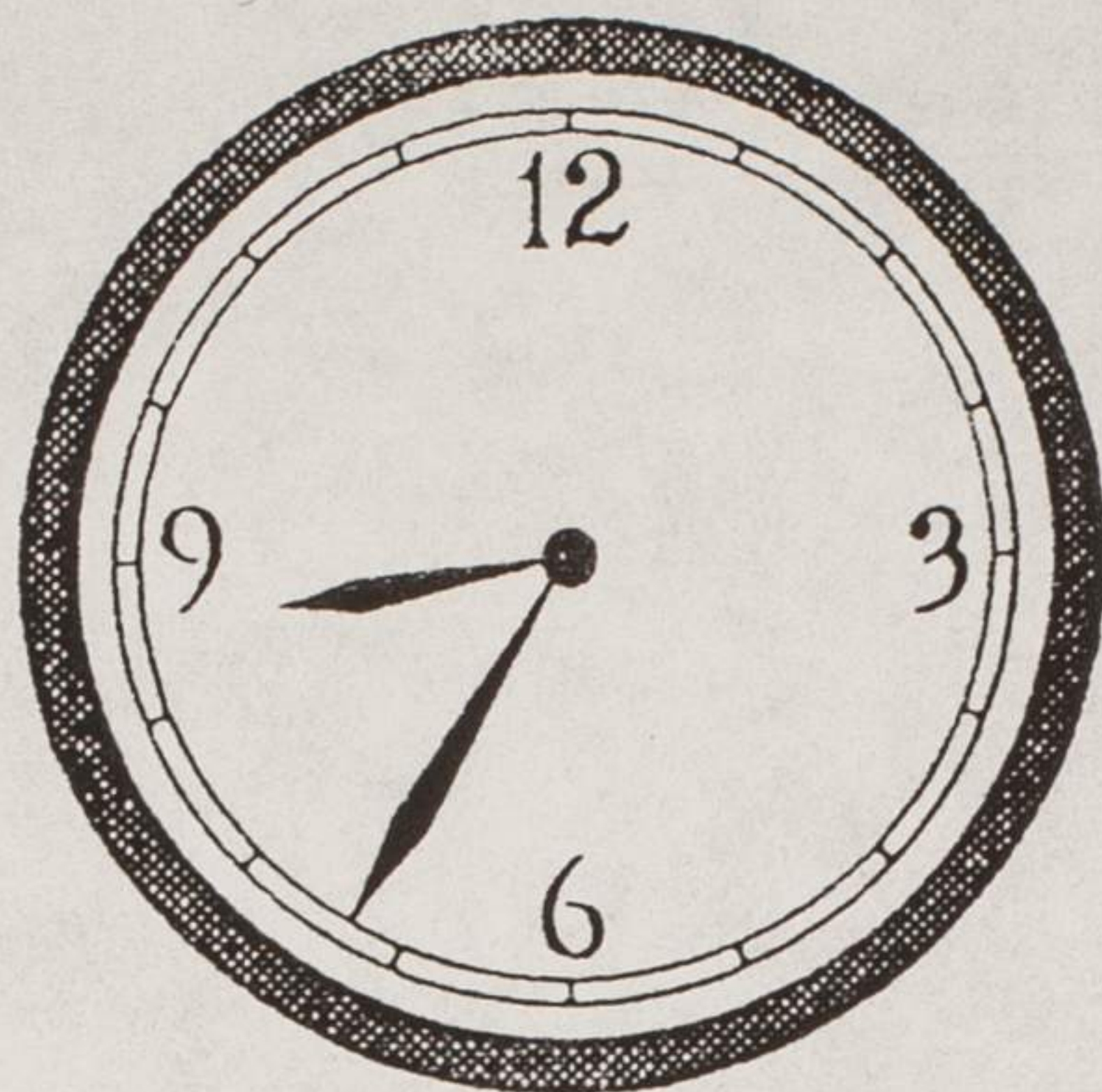
THE Historical Society's Dinner

TO FOR USE AT WEST COAST REGION.

THANKS

P.S. \$300 or \$400 Life membership

Sounds Good, what you think!



**ALASKA BLACK CAUCUS
MEMBERSHIP RENEWAL and APPLICATION**

Please mail with your check to P.O.Box 103342, Anchorage, AK 99510
Phone 1-907-272-5951

Yearly fees for the period January 1 - December 31, 1995

Please check one

Regular (individual):	\$ 24.00	<input type="checkbox"/>
Life (individual):	\$300.00	<input checked="" type="checkbox"/>
Associate (under 18) non-voting:	\$ 10.00	<input type="checkbox"/>
Business:	\$100.00	<input type="checkbox"/>
Business (life):	\$500.00	<input type="checkbox"/>

Name: _____

Address: _____

Phone No.: _____ Is this a change? yes no

Amount Enclosed: \$ _____

Signature: _____ Date: _____

The Nicodemus Historical Society

R.R.#2 Box 139 Bogue, Kansas 67625

(913) 674-3311

June 17, 1996

Brenda Bose
529 S. Main Suite 2
Wichita, Kansas 67202

Dear Brenda:

Enclosed is the information you requested about touring Nicodemus. If you want to come any time other than during the Emancipation Celebration (see enclosed) or during Pioneer Days (2nd week end in October), than we can arrange for a special lunch, and program that will generally run about \$15.00 per person. We do an hour tour of the entire Township, visiting cemeteries and all the areas where people settled and had a school and church. You can view documentaries and videos we have as well as see the exhibits. I will do a special presentation of the history and lunch can be serve (Bar-b-que, potato salad, baked beans).

Let me know what date you would like to look at coming so that we can arrange this historic tour for your group.

Sincerely,

Angela Bates-Tompkins
President

RESOURCE MATERIAL

THE WESTERN MIGRATION OF THE AFRICAN AMERICAN AND THE FRONTIER EXPERIENCE

Revised 1994

Contents

African American Military Regiments/**Buffalo Soldiers**
African American Towns/**Nicodemus, KS**
African American Town Builder & Politician/**Edward P. McCabe**
African American Migrants/**Exodusters**

Written by Angela Bates, President of the Nicodemus Historical Society, historic Nicodemus, Kansas (soon to be a National Park).

ORDER FORM

Teachers Book _____ x \$30.00 \$ _____
Shipping/Handling: _____ \$1.25 ea \$ _____

Ship To:

Phone: _____

Make checks Payable to:

The Nicodemus Group P.O. Box 70 Bogue, Kansas 67625
(913) 674-3311

Life Style Consultant

316-264-6211 Brenda Bose 519 S. Main Suite 2 Wichita, Ks. 67202

8 June 1996

Ms. Angela Bates
Nicodemus Historical Society
Post office Box 131
Bogue, Kansas 67625

Blessings Ms. Bates:

I am interested in conducting a Bus Tour to Nicodemus to inform Black Kansans about apart of their History here in Kansas.

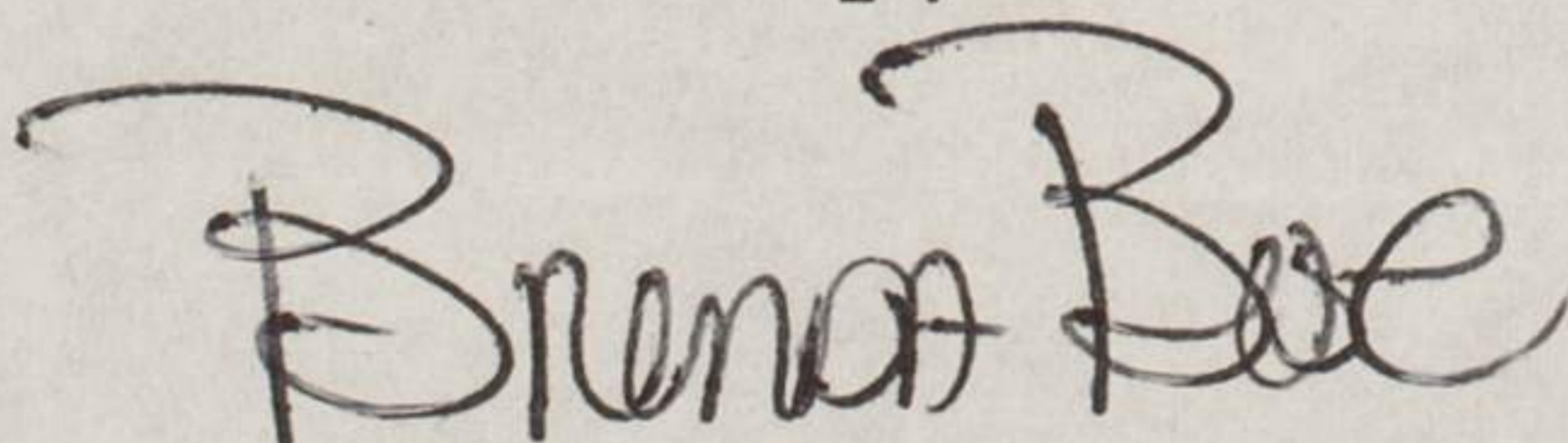
It amazed me just how many people in Wichita do not know about Nicodemus. When I went to school in Wichita that was apart of my History Lesson however that was many years ago.

Please send any information that you can. It will help me prepare a Tour to Nicodemus. Also, close Hotels or really if there are any places to stay in Nicodemus.

I would like to plan this around your HomeComing if possible.

Ms. Bates, I look forward in hearing from you and receiving as much information and literature as soon as possible.

Sincerely,



Brenda Bose
LifeStyle Consultant

/bn
encl.