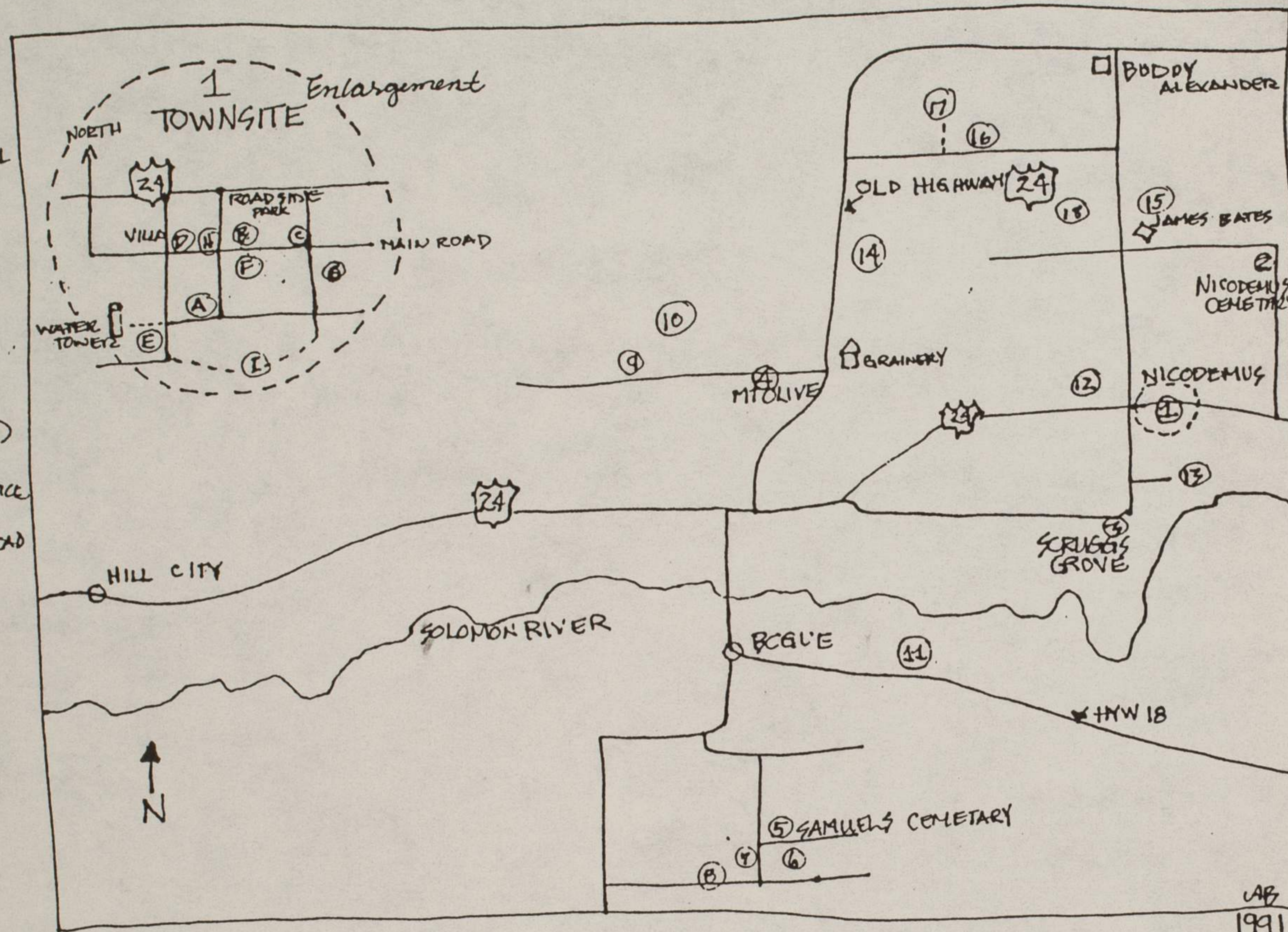


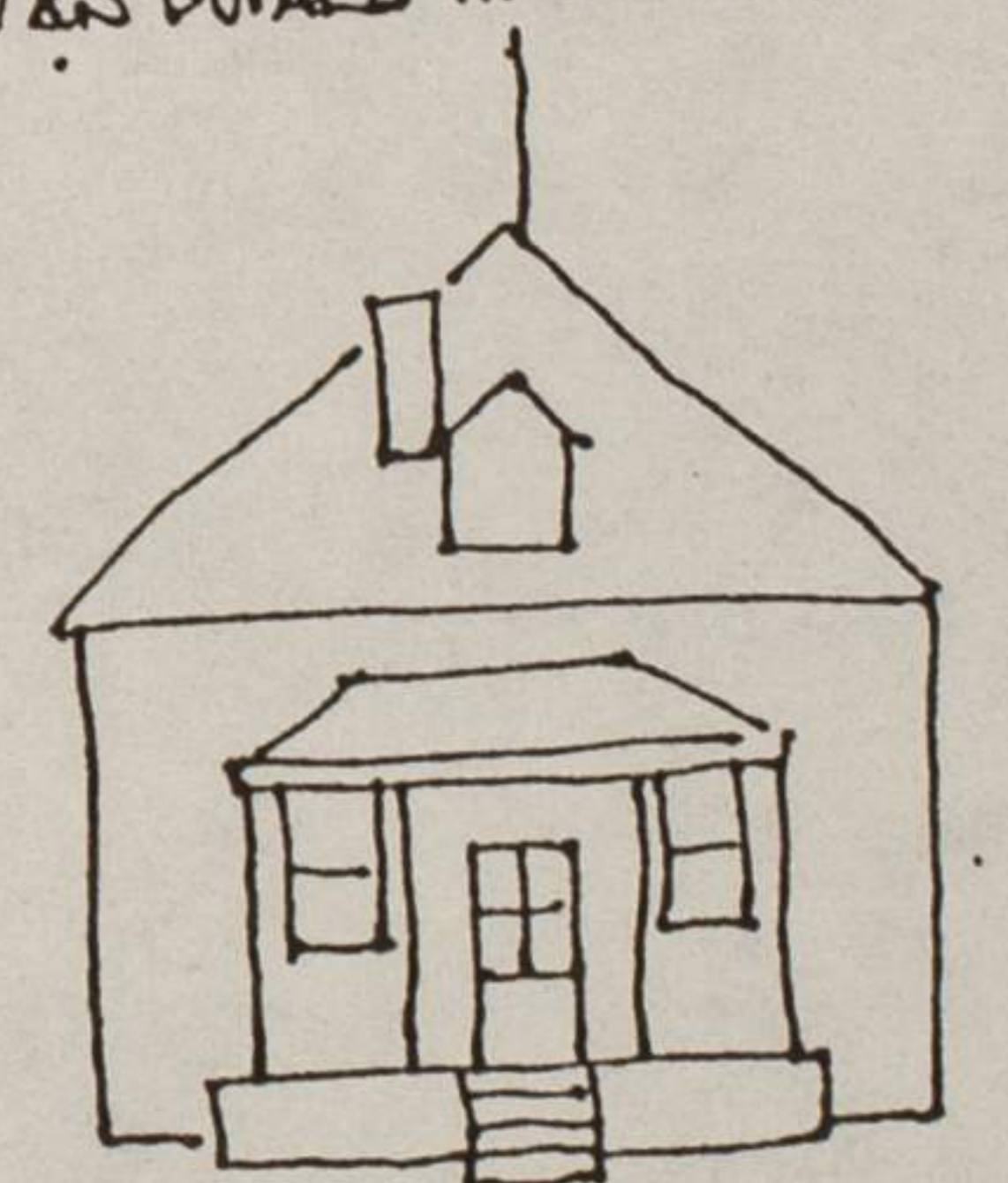
# NICODEMUS, KS.

## TOWN SITE

- A. AME CHURCH
- B. SITE OF OLD MASONIC HALL
- C. TOWNSHIP HALL
- D. 1<sup>ST</sup> BAPTIST CHURCH
- E. NICODEMUS SCHOOL
- F. Z.T. FLETCHER HOTEL (WEST END OF BLDG ONLY)
- G. STONE RESIDENCE OF JERRY SCRUGGS (RUINS)
- H. SITE WHERE SAYER'S GENERAL STORE & POST OFFICE STOOD.
- I. CLEMENTINE VAUGHN HOMESTEAD



- 1. TOWN SITE
- 2. NICODEMUS CEMETARY
- 3. SCRUGGS GROVE/SITE OF OLD EMANCIPATION CELEBRATIONS
- 4. MT. OLIVE CEMETARY
- 5. SAMUELS CEMETARY
- 6. NAPUS HOMESTEAD FARM
- 7. CAUSEY NAPUE OLD FARM (RUINS)
- 8. DABNEY HOMESTEAD FARM (RUINS)
- 9. MT. OLIVE SCHOOL (RUINS)
- 10. PERRY BATES' HOMESTEAD FARM (RUINS)
- 11. ALEXANDER HOMESTEAD FARM
- 12. MOORE HOMESTEAD FARM (RUINS)
- 13. OLA WILSON HOMESTEAD (RUINS)
- 14. MARI & WARREN WHITE OLD FARM
- 15. MATTIE & CASS BIBBS OLD FARM
- 16. BERNICE & HARRY BATES OLD HOME (RUINS)
- 17. HENRY WILLIAMS' HOME (RUINS)
- 18. VANDUVAL HOMESTEAD (RUINS)



## TOUR MAP

