

WHEN YOU JOIN FARM BUREAU, you're joining an organization of people like you—productive, conscientious citizens dedicated to improving the quality of their lives and the lives of those who depend on them. Like you, they care about feeding their families, educating their children and speaking out on issues of concern. They also care about value.

Whether on the farm or in the city if you're a Farm Bureau member, you already benefit from a full range of programs and services. If you're not a member, we invite you to join an organization that stands ready to serve your needs and interests.

Saving you money

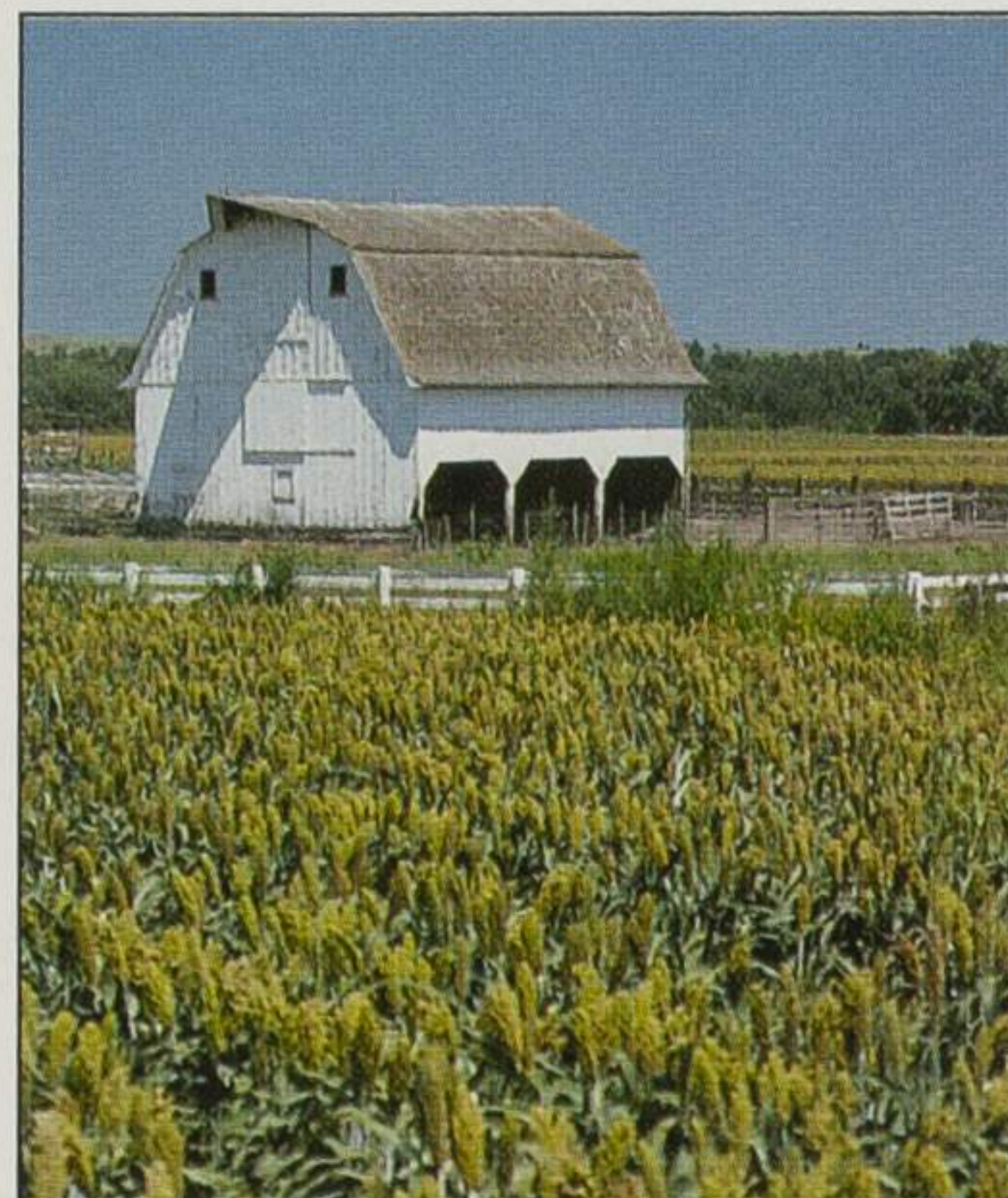
Farm Bureau members in Kansas save on a variety of products and services.

■ **Valu-Line.** Saving money is a phone call away when you choose Valu-Line as your long distance carrier. Daytime calls within the state may be as low as 14.2 cents per minute with the 16 percent discount for prompt payment.

■ **Coastal Mart.** On the go? Whether you're on the road or at home, you'll save when you take advantage of Coastal Mart's 2 percent discount for Farm Bureau members. The discount applies to all monthly purchases on Coastal accounts designated as a member as long as your monthly balance is current.

■ **Dodge Truck \$500 Rebate.** Your Farm Bureau membership earns you \$500 cash back on the purchase of selected models of Ram or Dakota pickups, Ram van conversions, Ram van cargoes and Ram wagons.

■ **Mail Order Prescription Drugs.** Save up to 50 percent on your family's prescriptions, vitamins and over-the-counter medicines with this unique discount service. Heartland/Feld Drug, a mail order pharmaceutical service, delivers prescriptions directly to your home. For a free catalog, call



FARM BUREAU MEMBERS ARE DEDICATED TO IMPROVING THE QUALITY OF THEIR LIVES.

1-800-228-3353. For additional savings, discount coupons are available from your county Farm Bureau office.

■ **Eye Health Network.** You'll see savings for your family's eye care needs with Eye Health Network. More than 53 participating ophthalmologists and 300 optometrists across the state offer members an extra 15 percent discount on eye care and eyewear. A small enrollment fee of \$5 for single individuals and \$10 per family is required.

■ **Bass Pro Shops.** Outdoor World Incentives, exclusive premium distributor for Bass Pro Shops, offers a 5 percent discount to Farm Bureau members in Kansas on all mail order catalog sales. Call 1-800-951-1000 for your free catalog and ask for your special Farm Bureau mail order form. Offer not valid in retail stores.

■ **Six Flags—St. Louis.** Beginning in 1996, Six Flags-St. Louis will be offering a special discount to Farm Bureau members. Tickets are available through participating county Farm Bureau offices or state headquarters. For park information and operating schedule call (314) 938-4800.

■ **Mastercard /VISA Bankcard.** Beat the high cost of other credit cards with a Farm Bureau VISA or Mastercard through Intrust Bank. As a member you pay a low interest rate and no annual fee. To apply by

phone, call Intrust Card Center in Wichita at 1-800-222-7458 and provide your Farm Bureau membership number.

■ **Insurance Services.** It's no cliché. . . Farm Bureau Insurance has Kansas covered with auto, home, life, health, farm and business coverage. Members can be assured of competitive rates, fast, fair claims service, personal attention and total account service. Contact your Farm Bureau insurance agent for details.

■ **Member Protector Plan.** Kansas Farm Bureau members automatically receive \$1,000 accidental death and dismemberment benefit for themselves, their spouse and children under the age of 21 living at home.

Improving your quality of life

Besides saving money, when you join Farm Bureau you are improving the quality of life in Kansas by supporting these programs and services.

■ **Legislative Voice.** Each day, decisions are made in Topeka and Washington, D.C. that affect your business and the well-being of your family. As policy is discussed and legislation developed, Farm Bureau is there to monitor, inform and represent you, the member. What's more, because our policies aren't set by a president or board, members have the opportunity to participate in the policy development process.



WHETHER YOU'RE ON THE FARM OR IN THE CITY, FARM BUREAU'S COMMON-SENSE APPROACH TO PUBLIC POLICY BENEFITS ALL KANSANS.