

# INHERIT THE WEST

The Autry Museum pays homage to the American West, from its prehistoric roots to its Gold Rush days and the romantic notions created by Hollywood. Here, visitors encounter treasures of an unexpected range – from cowboy chaps, spurs, and saddles to the paintings of Albert Bierstadt and from the armor of Spanish *conquistadors* to a chenille kiddie bedspread bearing the hallowed Hopalong Cassidy name.

Whether it's the art of Frederic Remington or the tools and clothing of the many cultures who shaped the region's rich history, The Autry's nine galleries are designed to be enjoyed by people of all ages. As a result, it is the most requested field trip destination by teachers and students throughout the Los Angeles Unified School District.

Built with a \$54-million gift from the Autry Foundation, the museum is a distinctive, world-class center. It is the only museum to so broadly span the West's temporal, geographic, and artistic scope. Its collection of significant, artistic, and historical Western firearms is the finest in the country. In material related to the mythical West—film, radio, television, and advertisement—it is the best in the world. The Autry Museum, a non-profit, 501(c)3 public charity institution, opened in 1988.



KWAKIUTL MASK DEPICTING FOUR RAVEN HEADS, 1981.



GOLD DEPUTY U.S. MARSHAL BADGE, ABOUT 1893.



DETAIL OF OSAGE WEDDING DRESS, LATE 19TH CENTURY.

COVER: DETAIL OF AMERICAN PROGRESS, BY JOHN GAST, OIL ON CANVAS, 1872.

## ESPECIALLY FOR CHILDREN

The Los Angeles Times Children's Discovery Gallery is a hands-on exhibit that explores the ranch life of a Mexican American family in Arizona.

## SPECIAL PROGRAMS

A wide variety of workshops, demonstrations, lectures, live music programs, and films for adults and children are offered each week.

## TOURS

Guided and unguided tours are available for school groups. Guided tours are also offered for adult groups of five or more by prior arrangement and at specified weekend hours.

## GUEST SERVICES

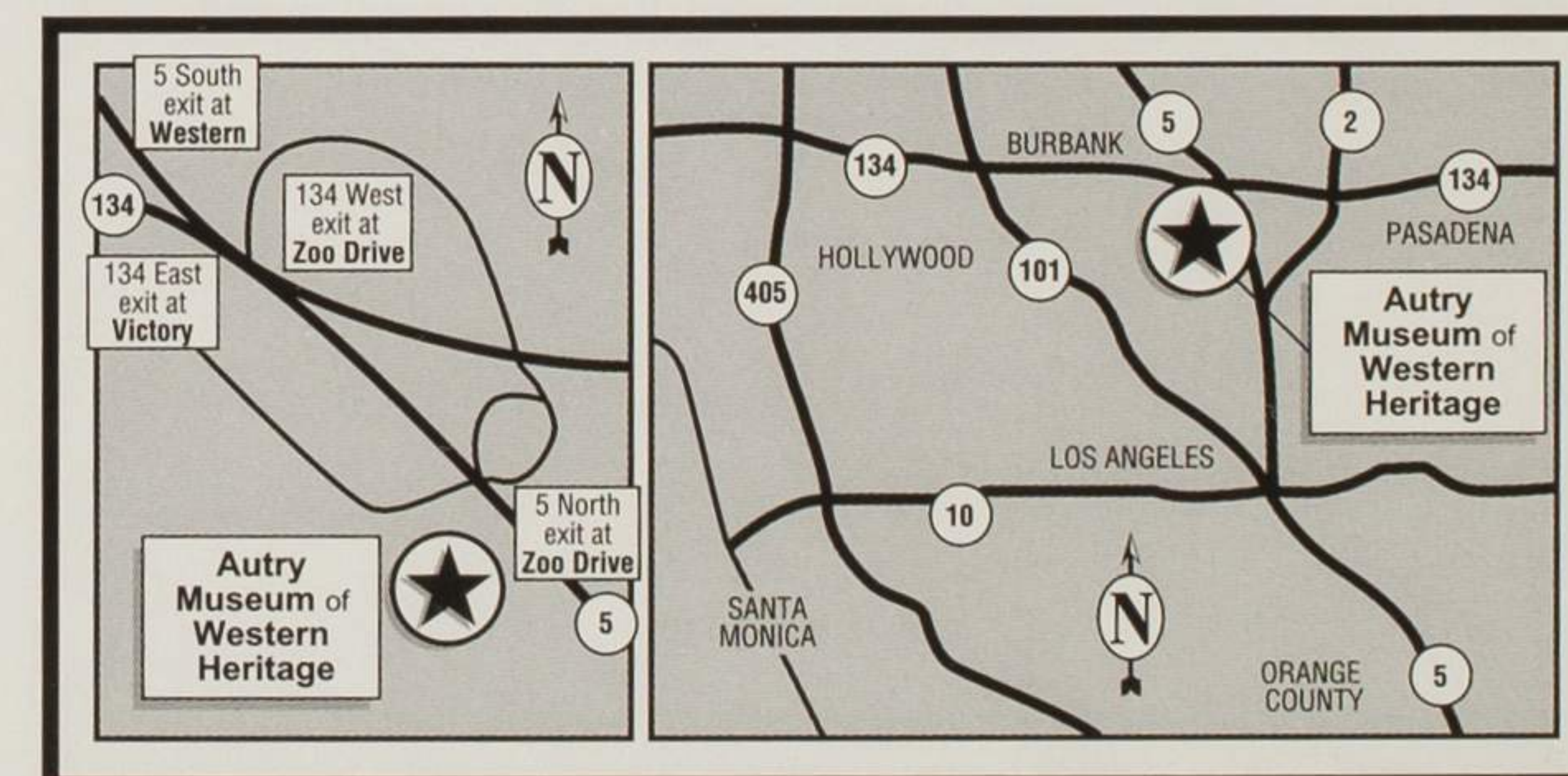
The Golden Spur Cafe is open from 8 a.m. to 4:30 p.m. The Museum Store, open 10 a.m. to 5 p.m., offers a wide variety of Western-inspired merchandise. All museum areas are wheelchair and handicap accessible. Strollers and wheelchairs are available at no charge on a first-come, first-serve basis.

## GENERAL INFORMATION

The Autry's galleries are open from 10:00 a.m. to 5:00 p.m. Tuesday through Sunday and on selected Monday holidays. The museum is closed Thanksgiving and Christmas. Museum members receive free admission for one year. Call to inquire about admission prices, group rates, and membership.

## LOCATION

Located in Los Angeles' Griffith Park at the junction of the Golden State (5) and Ventura (134) freeways, The Autry is adjacent to the Los Angeles Zoo. On surface streets, it can be reached from Forest Lawn Dr., Victory Blvd., or Los Feliz Blvd. The Autry is 15 minutes from the L.A. Civic Center and is accessible using MTA bus route 96. Parking is free.



## AUTRY MUSEUM of WESTERN HERITAGE

4700 Western Heritage Way, Los Angeles, Calif. 90027-1462  
(213) 667-2000 Fax (213) 660-5721

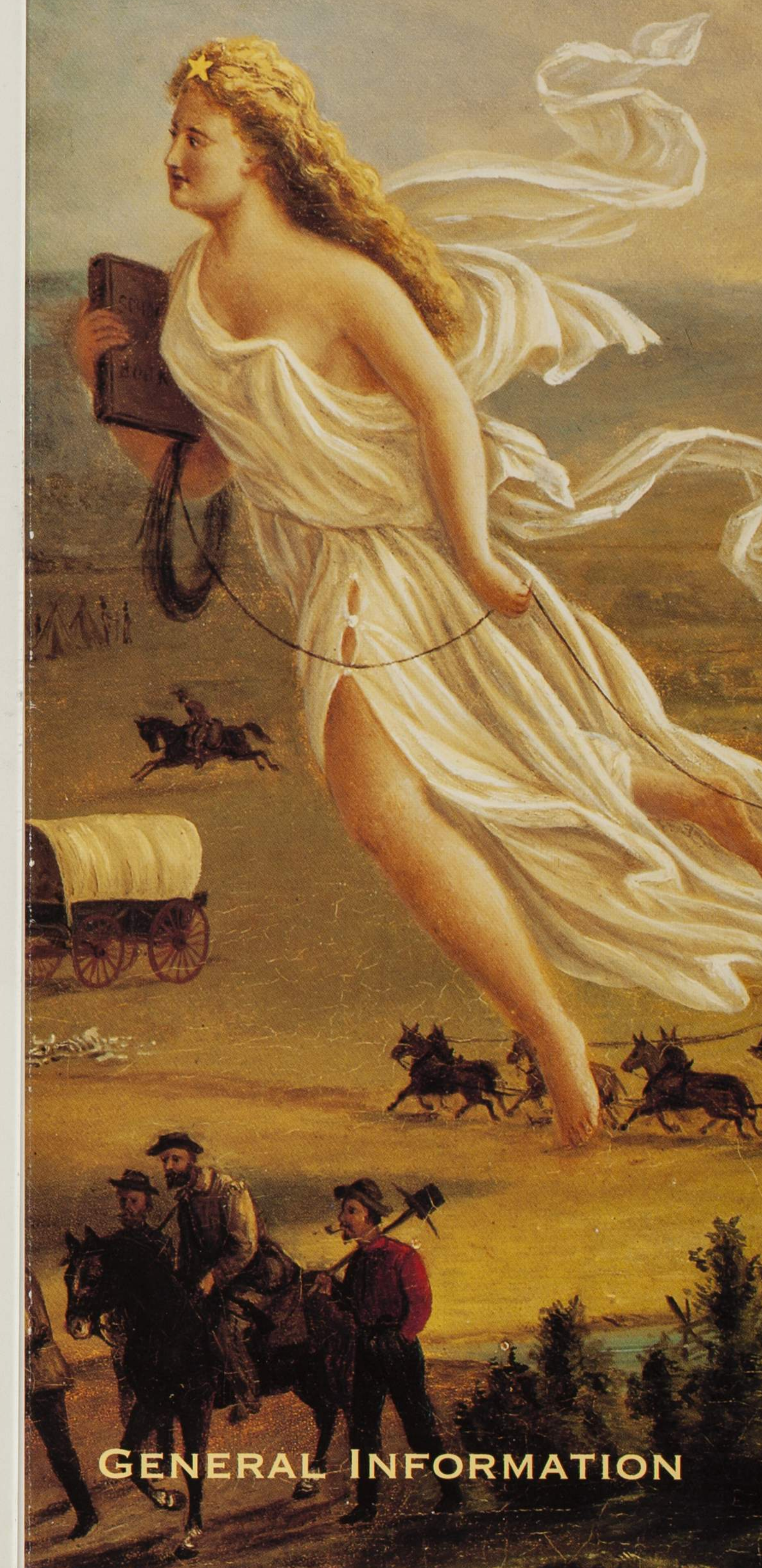
Made possible, in part, through the generous support of

**WELLS FARGO BANK**



ARMOR OF THE TYPE WORN BY SPANISH EXPLORERS, LATE 1500S.

# AUTRY MUSEUM of WESTERN HERITAGE



## GENERAL INFORMATION