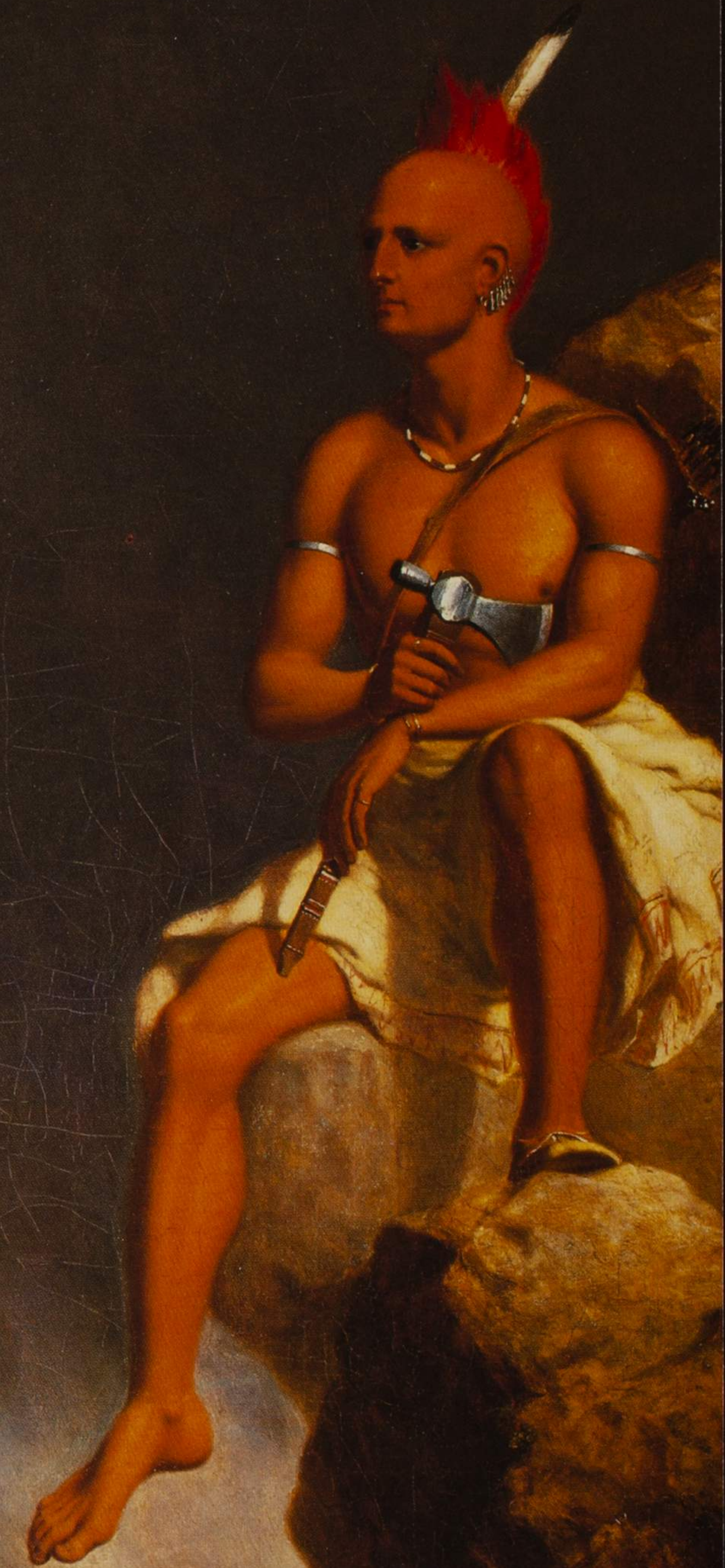


# AUTRY MUSEUM of WESTERN HERITAGE



**MEMBERSHIP INFORMATION**

## TOURS

Guided and unguided tours are available for school groups. Guided tours are also offered for adult groups of five or more. Phone registration and advance notice are required. Please call the museum for more information.

## THEATER

The Wells Fargo Theater is located in the main plaza. It is a 215-seat theater that presents movies, lectures, and performances. Program information is sent to members on a quarterly basis in the museum newsletter, *Spur*.

## CAFE

The museum's Golden Spur Cafe is located in the main plaza and offers both indoor and patio seating. It is open from 8 a.m. to 4:30 p.m. Members receive a 10% discount on all purchases.

## MUSEUM STORE

The Museum Store offers a wide variety of Western-inspired merchandise. Native American blankets and jewelry, apparel, books on Western history, stationery, art reproductions, Western music, and much more are available. Members receive a 10% discount on all purchases in the store. Hours: 10 a.m. to 5 p.m. Tuesdays through Sundays.

## LOCATION

The Autry is located in the city of Los Angeles at 4700 Western Heritage Way in Griffith Park at the junction of the Golden State (5) and Ventura (134) freeways. It is adjacent to the Los Angeles Zoo. On surface streets, it can be reached from Forest Lawn Drive, Victory Blvd., or Los Feliz Blvd. The museum is 15 minutes from the Los Angeles Civic Center and is accessible using MTA bus route 96.

## HOURS

The Museum is open from 10 a.m. to 5 p.m., Tuesdays through Sundays (and on selected Monday holidays; closed Christmas and Thanksgiving).

## TAX INFORMATION

Under federal law, the federal income-tax deduction for charitable gifts is limited to the amount by which the gift exceeds the value of the goods and services provided in exchange for the contribution. Information regarding the tax-deductibility of membership levels is listed in the "Membership Benefits" section of this brochure.

## AUTRY MUSEUM of WESTERN HERITAGE

4700 Western Heritage Way, Los Angeles, California 90027

Phone (213) 667-2000 • Fax (213) 660-5721

e-mail: [autry@autry-museum.org](mailto:autry@autry-museum.org)

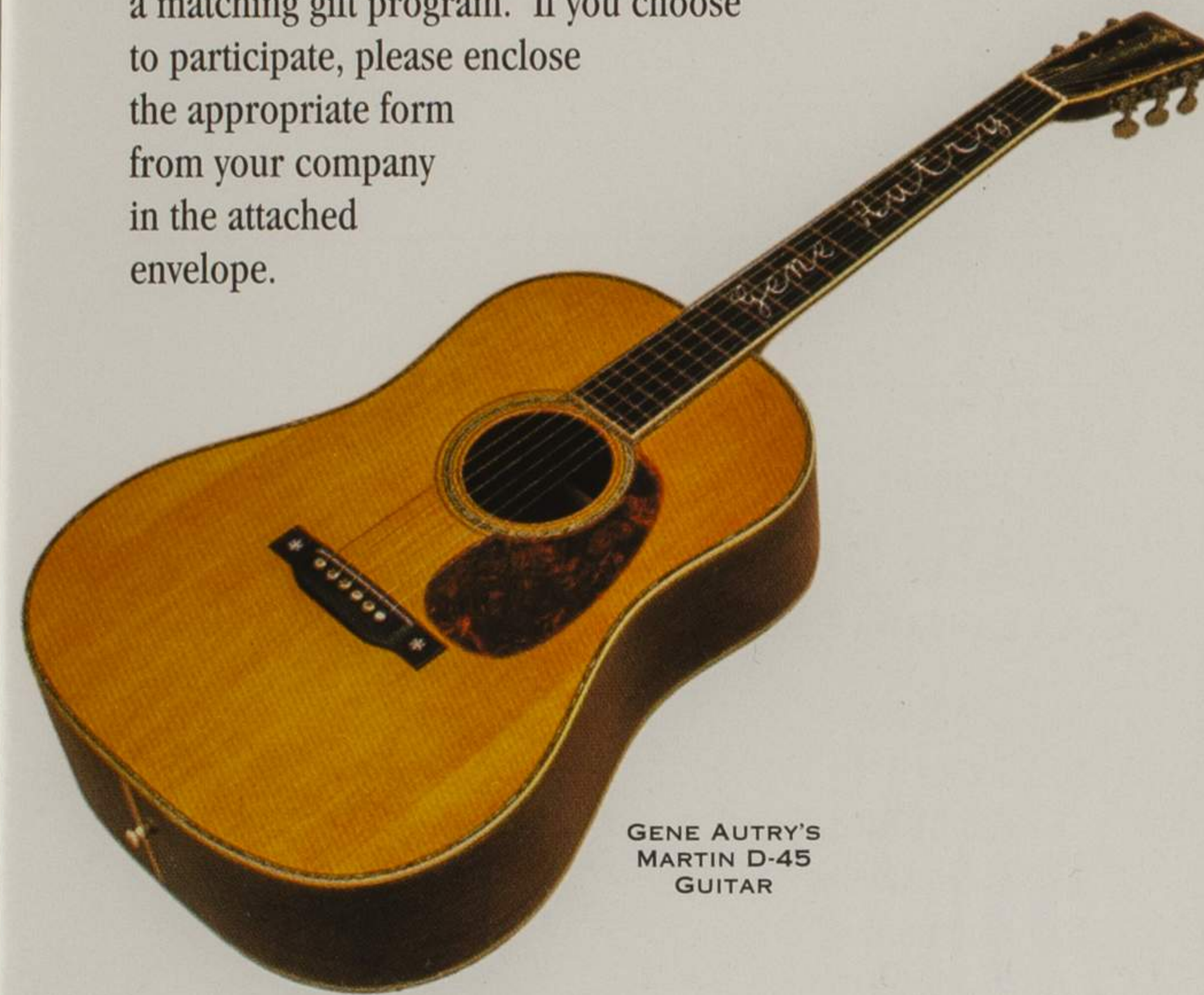


Made possible, in part, through the generous support of

**WELLS FARGO BANK**

## CORPORATE MATCHING GIFTS

Your support of The Autry may be multiplied if your employer has a matching gift program. Many companies match employee contributions to non-profit organizations. Check with your personnel office to see if your employer offers a matching gift program. If you choose to participate, please enclose the appropriate form from your company in the attached envelope.



GENE AUTRY'S  
MARTIN D-45  
GUITAR

## OTHER WAYS TO GIVE SUPPORT

As a non-profit, 501(c)3 cultural institution, The Autry relies on the generosity of individuals, corporations, and foundations to allow it to continue to present new and challenging exhibits and programs to the public. Contributions made in addition to membership are appreciated greatly, and the museum offers special recognition in honor of major gifts of \$5,000 (Director's Circle level) and more.

Support may be made through donations of cash, property or in-kind services and may be pledged over a period of years. Our Development Department is available to discuss these and other ways of contributing to the museum. Please call (213) 667-2000, ext. 315.



MAIN AND WINCHESTER,  
SAN FRANCISCO-MADE  
VAQUERO SADDLE,  
ABOUT 1860

Your stamp here saves us  
much needed funds



**BUSINESS REPLY MAIL**

FIRST CLASS MAIL

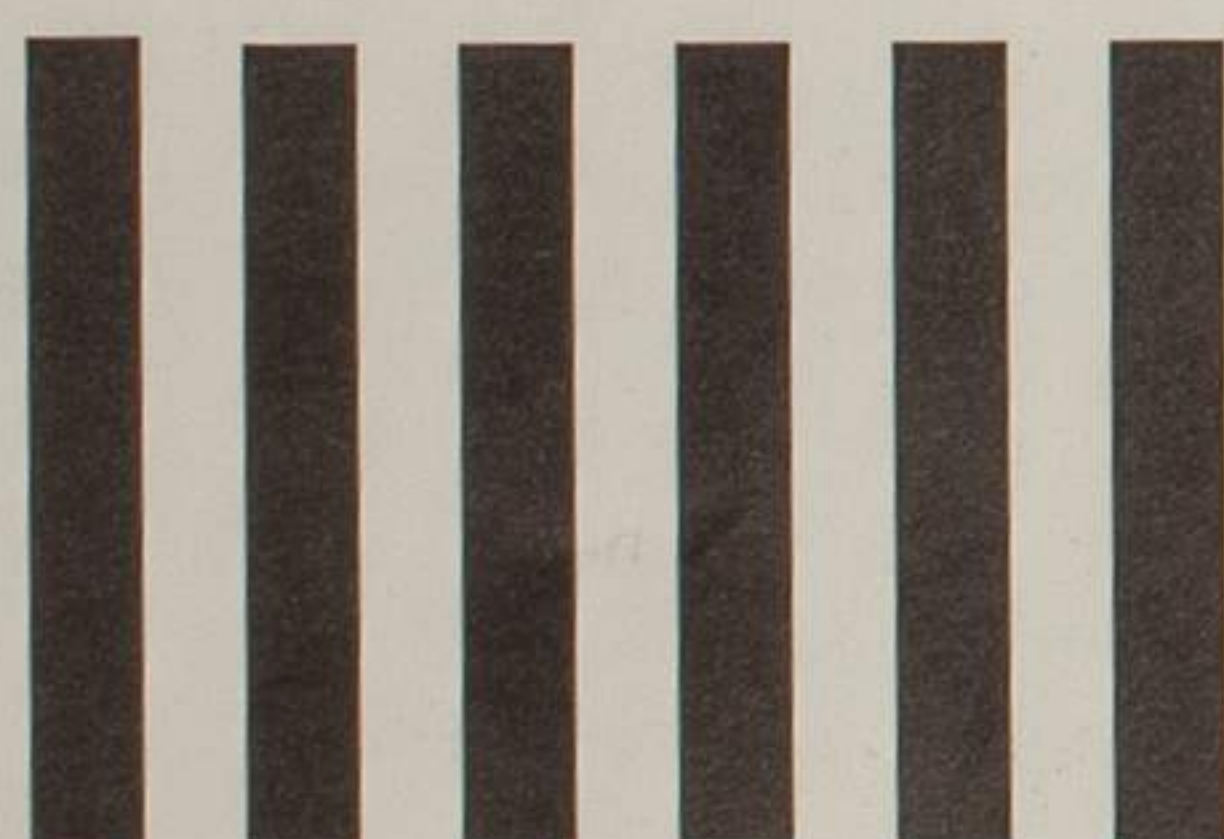
PERMIT NO 68654

LOS ANGELES, CA

POSTAGE WILL BE PAID BY ADDRESSEE



NO POSTAGE  
NECESSARY IF  
MAILED IN THE  
UNITED STATES



Autry Museum of Western Heritage  
4700 Western Heritage Way  
Los Angeles, CA 90099-4575

