

Provide your members and or auxiliaries with a fine opportunity to see and hear how the African American Church played a central role in the western migration of the African American. Angela Bates-Tompkins completed research and an exhibit on the Kansas-Kentucky Connection and the role of the church in the migration to Kansas. This concludes her research started in 1993 that took her to Kentucky to research the former churches and plantations of former settlers of Nicodemus.

This 1 hour slide presentation of historic photos including early churches, the founders, members and settlers are presented are woven with the history and personal accounts of the African Americans that migrated west in search of true freedom, and their unbending faith in God that pervaded every aspect of their life.



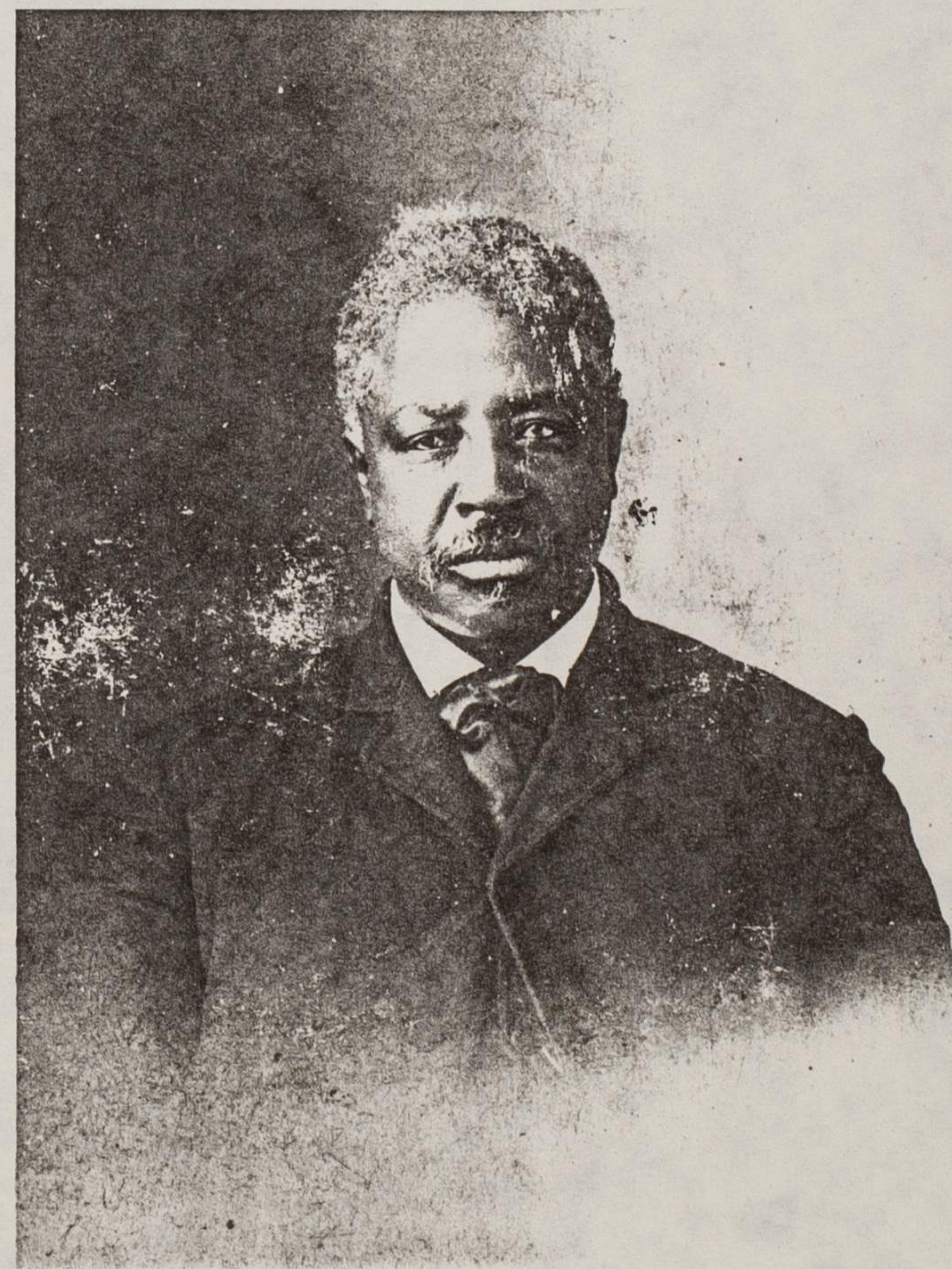
Reverend John and LeeAnna Samuels  
Great, Great, Great Grandparent of  
Angela Bates-Tompkins

## SCHEDULE TODAY

*Time Available from*  
April 8 through June 1

\$150 + Mileage (. 29 cents) and/or  
Good Will Donation

Schedule for the 20 piece photo  
and plexiglass panel exhibit  
\$100.00 Donation to Nicodemus Historical Society



Reverend Daniel Hickman  
Founder of Mt. Olive Baptist Church  
Nicodemus, 1878